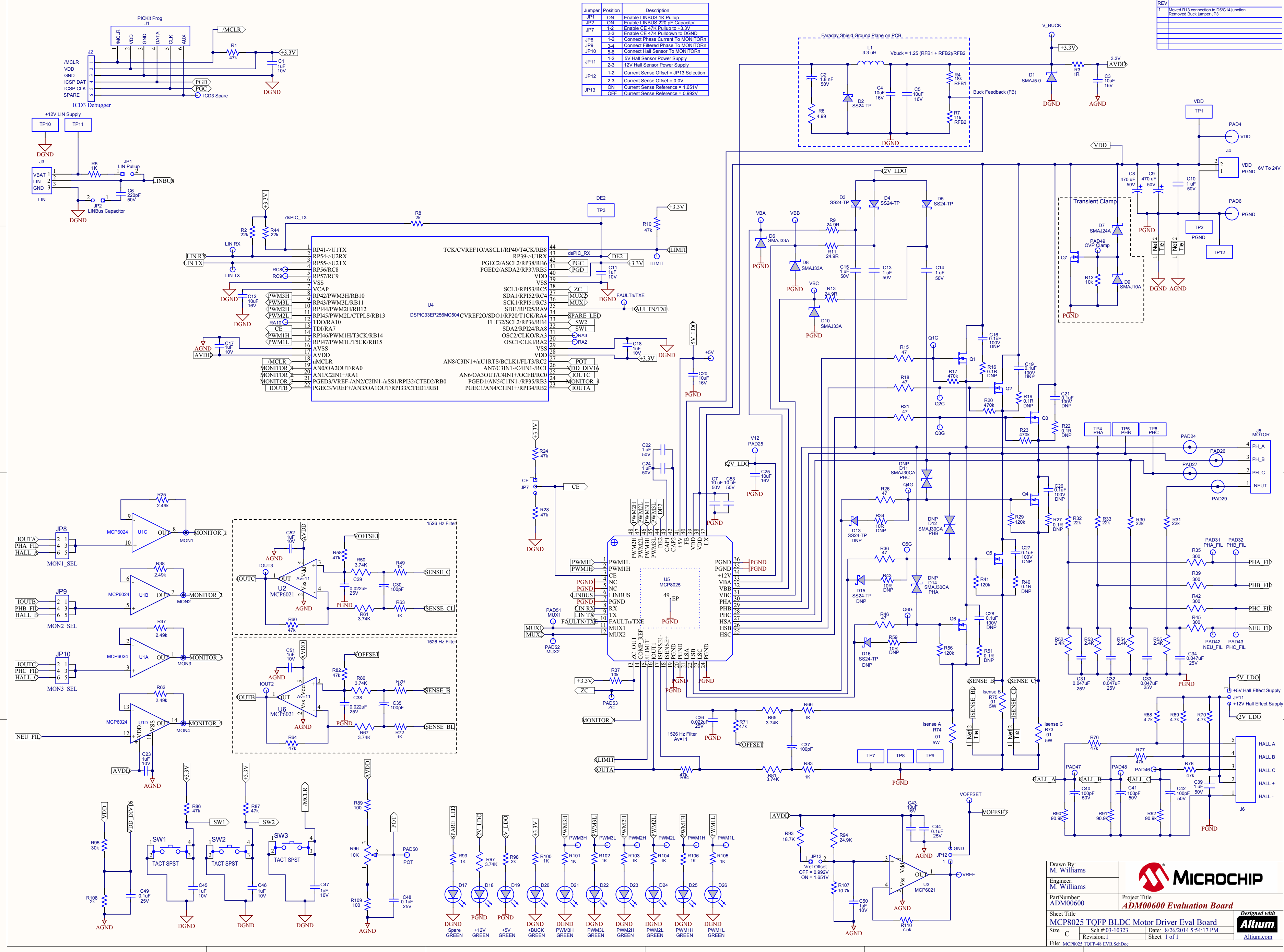


Jumper	Position	Description
JP1	ON	Enable LINBUS 1K Pullup
JP2	ON	Enable LINBUS 220pF Capacitor
JP7	1-2	Enable CE 47K Pullup to +3.3V
JP8	2-3	Enable CE 47K Pullup to DGND
JP9	1-2	Connect Phase Current To MONITORn
JP10	3-4	Connect Filtered Phase To MONITORn
JP11	1-2	5V Hall Sensor Power Supply
JP12	2-3	12V Hall Sensor Power Supply
JP13	1-2	Current Sense Offset = JP13 Selection
JP13	2-3	Current Sense Offset = 0.0V
JP13	ON	Current Sense Reference = 1.651V
JP13	OFF	Current Sense Reference = 0.992V

REV	Description
1	Moved R13 connection to D5/C14 junction Removed Buck Jumper JP3



Drawn By: M. Williams Engineer: M. Williams Part Number: ADM00600	
Project Title ADM00600 Evaluation Board	
Sheet Title MCP8025 TOFP BLDC Motor Driver Eval Board	
Size C	Date: 8/26/2014 5:54:17 PM Sheet 1 of 1
File: MCP8025 TOFP-48 EVB SchDoc	

