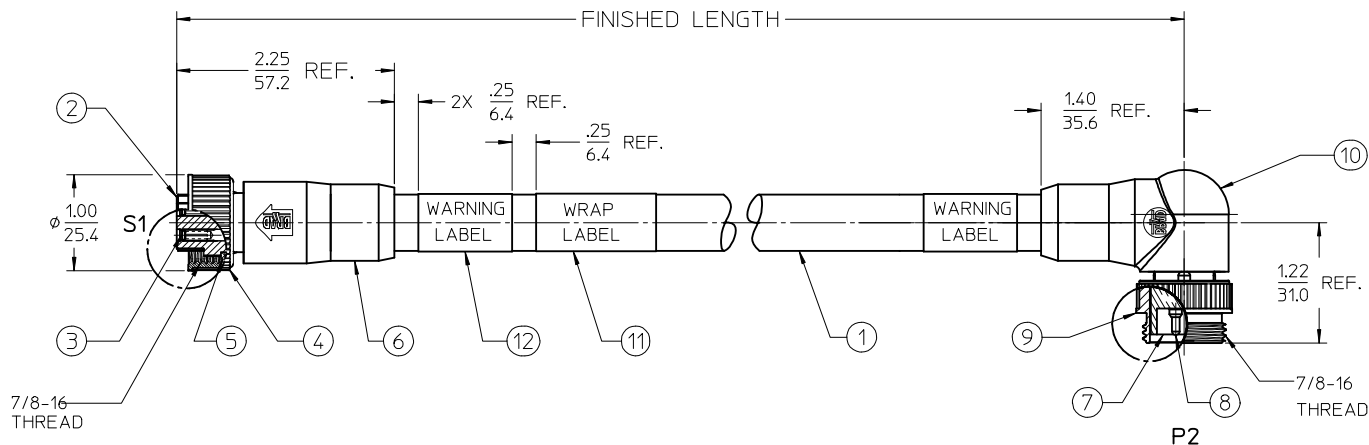


FEMALE FACE VIEW
SCALE: 2X

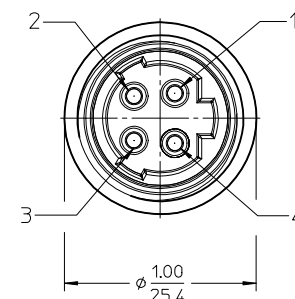


NOTES:

- 1) MATERIAL: SEE TABLE
- 2) FINISHES: SEE TABLE
- 3) WRAP LABEL IS MARKED WITH P/N, DATE CODE VOLTAGE & AMPERAGE
- 4) MATES WITH: MINI CHANGE 4 POLE RECEPTACLE (ALT KEY)
- 5) ELECTRICAL DATA:
 14AWG UL TYPE: TC-ER STRANDED CABLE
 MAX VOLTAGE: 600V
 MAX CURRENT: 15A
 PROTECTION IP67 (WHEN MATED)
 TEMPERATURE RANGE: -20°C TO 90°C
- 6) PACKAGING:
 CABLE ASSEMBLIES ARE BAGGED SEPERATLY IN POLY BAGS WITH BAR CODE LABEL ATTACHED TO OUTSIDE OF BAG.

S1		P2	
1	BLACK #1	1	
2	BLACK #2	2	
3	BLACK #3	3	
4	GREEN/YELLOW	4	

WIRING DIAGRAM



MALE FACE VIEW
SCALE: 2X

PART NUMBER LEGEND

114132K21MXXX

MC 4P FEMALE STRAIGHT TO 90 DEG MALE (EXT THD) ALT KEY

CABLE TYPE: 14 AWG TC ER, BLACK

FINISHED LENGTH:
 M001= .1M
 M010= 1.0M
 M100= 10.0M

12	2	WARNING LABEL	VINYL	ORANGE/BLACK
11	1	WRAP LABEL	VINYL	BLACK/YELLOW
10	1	90 DEG OVERMOLD	PVC	BLACK
9	1	MALE COUPLING NUT	ZINC ALLOY	BLACK
8	4	CONTACT PIN	Cu ALLOY	GOLD PLATE
7	1	MALE INSERT	PVC	BLACK
6	1	STRAIGHT OVERMOLD	PVC	BLACK
5	1	FRICTION RING	NYLON	WHITE
4	1	FEMALE COUPLING NUT	ZINC ALLOY	BLACK
3	4	CONTACT SOCKET	Cu ALLOY	GOLD PLATE
2	1	FEMALE INSERT	PVC	BLACK
1	SEE NOTE 5	CABLE	TPE	BLACK
ITEM	QTY	DESCRIPTION	MATERIAL	FINISH

RELEASED	EC NO: IPG2016-0734	2015/11/13	DRWRNSTONE
		2015/12/09	CHKDK JOZWIK
		2016/02/29	APPR: BWOODMAN
REV	DESCRIPTION	QUALITY SYMBOLS	
A		▽=0	
		▽=0	

GENERAL TOLERANCES (UNLESS SPECIFIED)	
mm	INCH
4 PLACES ± ---	± ---
3 PLACES ± ---	± ---
2 PLACES ± ---	± .01
1 PLACE ± 0.3	± ---
0 PLACE ± ---	± ---
ANGULAR ± 1°	
DRAFT WHERE APPLICABLE MUST REMAIN WITHIN DIMENSIONS	

DIMENSION STYLE		SCALE		DESIGN UNITS	
IN/MM		1:1		INCH	
DRAWN BY	DATE	TITLE			
RSTONE	2015/11/13	MINI CHANGE CABLE ASSY			
CHECKED BY	DATE	FEM STR. TO 90 DEG MALE			
KJOZWIK	2015/12/09	EXTERNAL THD, ALT KEY			
APPROVED BY	DATE	molex			
BWOODMAN	2016/02/29				
MATERIAL NO.	-	DOCUMENT NO.	SD-130062-028		SHEET NO.
					1 OF 1

THIS DRAWING CONTAINS INFORMATION THAT IS PROPRIETARY TO MOLEX INCORPORATED AND SHOULD NOT BE USED WITHOUT WRITTEN PERMISSION					
---	--	--	--	--	--