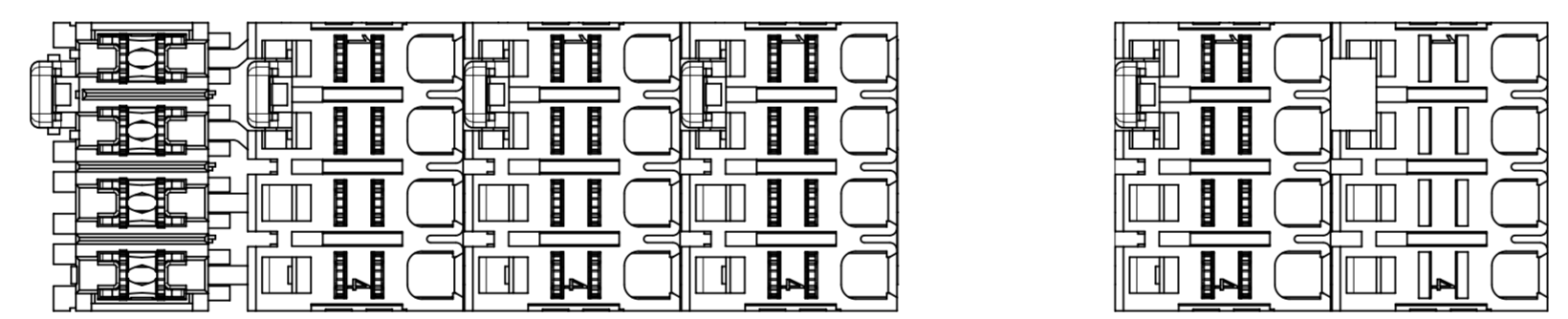
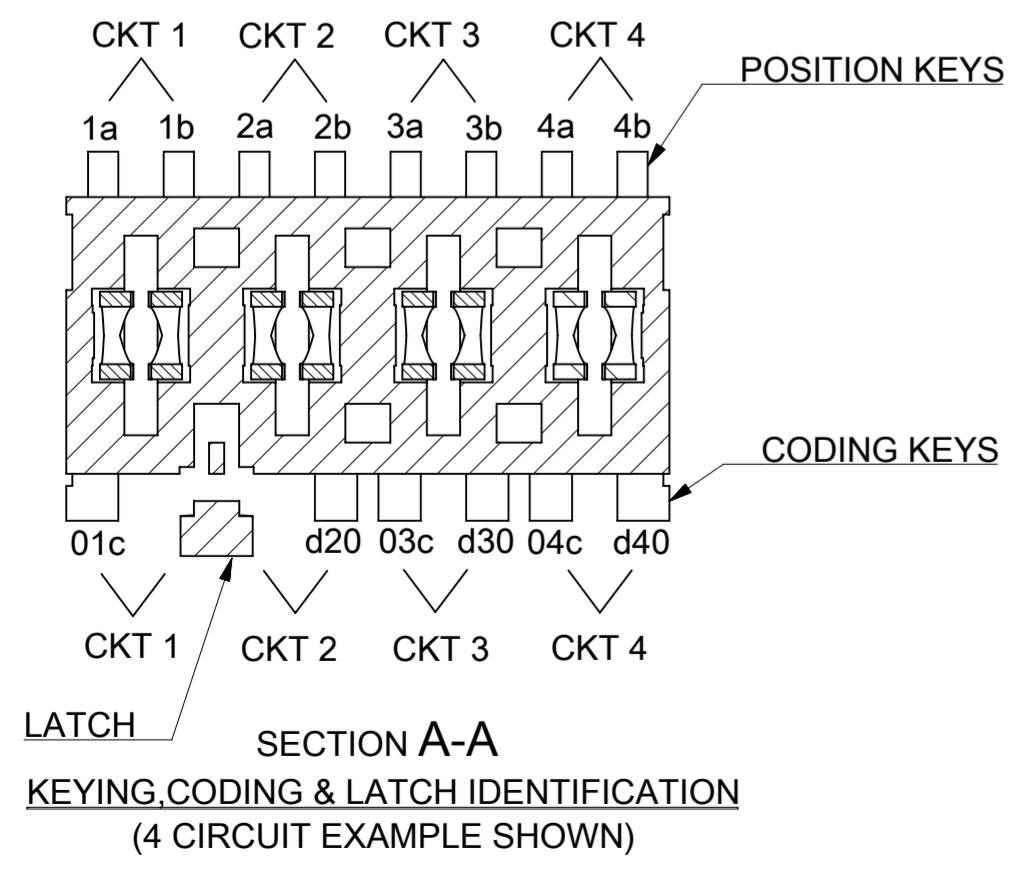


CKT SIZE	DIM A	DIM B
2	5.00	9.94 +/-0.04
3	10.00	14.93 +/-0.05
4	15.00	19.93 +/-0.05



- NOTES:
- MATERIALS:
 HOUSING: PA 6,UL94 V-2
 COLOUR : SEE SHEET 2
 TERMINAL: PHOSPHOR BRONZE, (0.50)/0.020 THICK REF
 PLATING: (2µm)/79µin MIN SILVER IN CONTACT AREA
 (0.10µm)/0.004µin MIN SILVER FLASH ALLOWER
 - PRODUCT CONFORMS TO SPECIFICATION: PS-99020-0037
 - SEE SUBSEQUENT SHEETS FOR PART NUMBERS SHOWING THE VARIOUS CODING, KEYING AND LATCHING OPTIONS.
 - PACKAGING SPECIFICATION PK-90833-001
 - APPLICATION SPECIFICATION AS-99033-0004



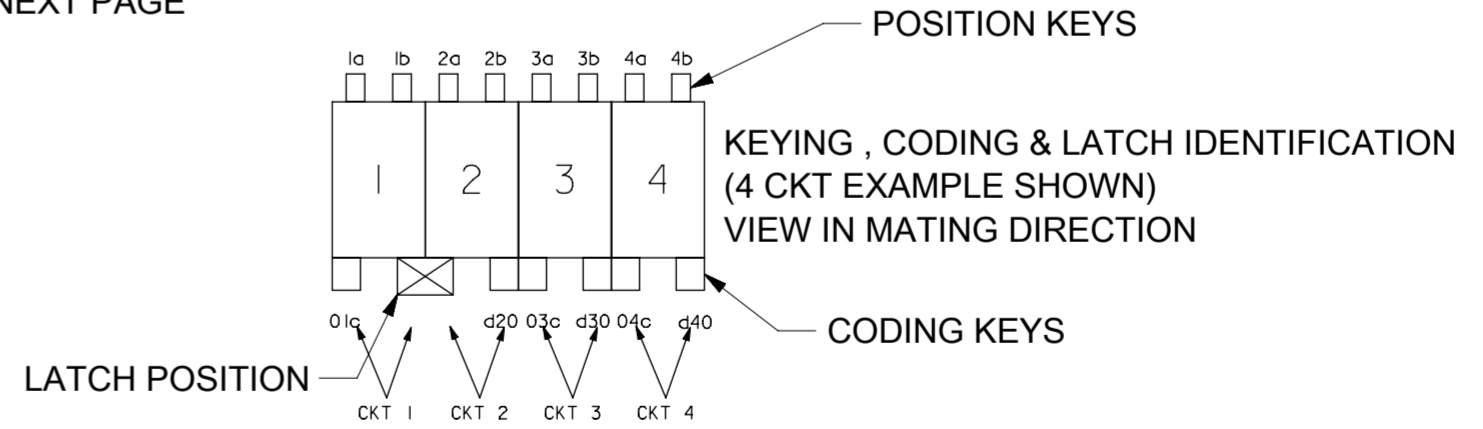
THIS DRAWING CONTAINS INFORMATION THAT IS PROPRIETARY TO MOLEX ELECTRONIC TECHNOLOGIES, LLC AND SHOULD NOT BE USED WITHOUT WRITTEN PERMISSION

DIMENSION UNITS mm	SCALE 2:1	CURRENT REV DESC: Obsoleted part number as per PCN#511465	molex		
GENERAL TOLERANCES (UNLESS SPECIFIED)		EC NO: 691224			
ANGULAR TOL ± °	4 PLACES ±	DRWN: SUGEEB	2022/01/06		
	3 PLACES ±	CHK'D: GGA	2022/01/19		
	2 PLACES ± 0.05	APPR: GGA	2022/01/19		
	1 PLACE ± 0.1	INITIAL REVISION:	DOCUMENT NUMBER		
	0 PLACES ±	DRWN: AKABADI	917790001		
		APPR: BRUTTLE	DOC TYPE	DOC PART	REVISION
DRAFT WHERE APPLICABLE MUST REMAIN WITHIN DIMENSIONS	THIRD ANGLE PROJECTION	DRAWING	SERIES	MATERIAL NUMBER	CUSTOMER
		A2-SIZE	91779	SEE TABLE	GENERAL MARKET
					SHEET NUMBER
					1 OF 6

2 CIRCUIT									
MOLEX PART NO.	HOUSING NO.	CIRCUIT SIZE	COLOUR	RAL NUMBER	POSITION KEYS	CODING KEYS	LATCH POSITION	CONFIGURATION	COLOUR STRIP
91779-0001	91779-9001	2	NATURAL	9001	1a 1b 2a 2b	01c d20	1/2		NONE
91779-0002	91779-9001	2	NATURAL	9001	1b 2a	01c d20	1/2		NONE
91779-0003	91779-9001	2	NATURAL	9001	1a 2b	d20	1/2		NONE
91779-0004	91779-9001	2	NATURAL	9001	1a	01c d20	1/2		NONE
91779-0005	91779-9001	2	NATURAL	9001	1a 2b	01c d20	1/2		BLUE
91779-0006	91779-9004	2	RED(PINK)	3014	1a 1b 2a 2b	NONE	1/2		NONE
91779-0007	91779-9001	2	NATURAL	9001	2a	01c	1/2		NONE
91779-0011	91779-9001	2	NATURAL	9001	1a	d20	1/2		NONE
91779-0012	91779-9001	2	NATURAL	9001	1b	01c d20	1/2		NONE
91779-0013	91779-9001	2	NATURAL	9001	1a	NONE	1/2		NONE
91779-0014	91779-9001	2	NATURAL	9001	1b 2a 2b	d20	1/2		NONE
91779-0015	91779-9001	2	NATURAL	9001	1a 1b 2a 2b	d20	1/2		NONE
91779-0016	91779-9001	2	NATURAL	9001	1a 1b 2a 2b	01c	1/2		NONE
91779-0017	91779-9004	2	RED(PINK)	3014	1a 1b 2b	NONE	1/2		NONE
91779-0018	91779-9001	2	NATURAL	9001	1b 2b	01c	1/2		NONE
91779-0019	91779-9001	2	NATURAL	9001	1b 2b	01c	1/2		GREEN
91779-0020	91779-9001	2	NATURAL	9001	1a 2b	d20	1/2		GREEN
91779-0021	91779-9001	2	NATURAL	9001	2a	01c d20	1/2		BLACK
91779-0022	91779-9001	2	NATURAL	9001	1b	d20	1/2		RED
91779-0023	91779-9001	2	NATURAL	9001	1b 2b	01c	1/2		BLUE

2 CIRCUIT									
MOLEX PART NO.	HOUSING NO.	CIRCUIT SIZE	COLOUR	RAL NUMBER	POSITION KEYS	CODING KEYS	LATCH POSITION	CONFIGURATION	COLOUR STRIP
91779-0024	91779-9001	2	NATURAL	9001	1b 2b	01c	1/2		ORANGE
91779-0025	91779-9001	2	NATURAL	9001	1a 1b	d20	1/2		NONE
91779-0026	91779-9001	2	NATURAL	9001	1a 2b	01c	1/2		NONE
91779-0028	91779-9004	2	RED(PINK)	3014	2a 2b	NONE	1/2		NONE
91779-0029	91779-9001	2	NATURAL	9001	NONE	01c d20	1/2		NONE
91779-0030	91779-9001	2	NATURAL	9001	1a 2a 2b	01c d20	1/2		NONE
91779-0031	91779-9001	2	NATURAL	9001	1a 2a	01c d20	1/2		NONE
91779-0032	91779-9001	2	NATURAL	9001	1b 2b	01c d20	1/2		NONE
91779-0033	91779-9001	2	NATURAL	9001	1a 1b 2a 2b	01c d20	1/2		RED
91779-0034	91779-9001	2	NATURAL	9001	1a 1b 2a 2b	01c d20	1/2		GREEN
91779-0035	91779-9001	2	NATURAL	9001	2b	NONE	1/2		NONE
91779-0036	91779-9001	2	NATURAL	9001	1a 1b 2a 2b	NONE	1/2		NONE
91779-0038	91779-9001	2	NATURAL	9001	1b	NONE	1/2		NONE

TABLE CONTINUES NEXT PAGE



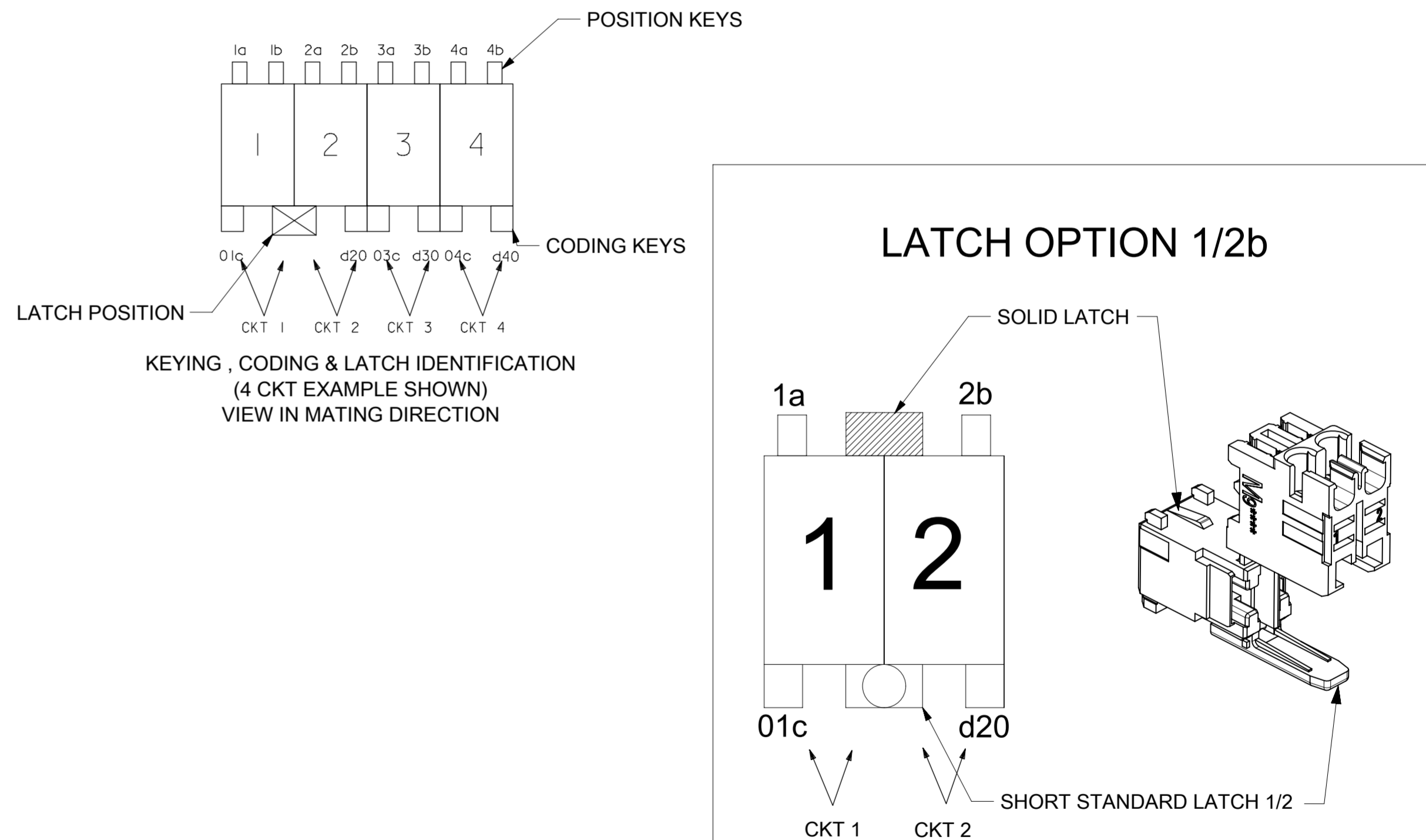
THIS DRAWING CONTAINS INFORMATION THAT IS PROPRIETARY TO MOLEX ELECTRONIC TECHNOLOGIES, LLC AND SHOULD NOT BE USED WITHOUT WRITTEN PERMISSION									
DIMENSION UNITS mm	SCALE 1:1	CURRENT REV DESC: Obsolete part number as per PCN#511465							
GENERAL TOLERANCES (UNLESS SPECIFIED)		<p>FAST 5 INDIRECT FEMALE ASSEMBLY 16 AMPS</p> <p>PRODUCT CUSTOMER DRAWING</p>							
ANGULAR TOL	± °								
4 PLACES	±								
3 PLACES	±								
2 PLACES	± 0.05								
1 PLACE	± 0.1	EC NO: 691224	2022/01/06						
0 PLACES	±	DRWN: SUGEEB	2022/01/19						
DRAFT WHERE APPLICABLE MUST REMAIN WITHIN DIMENSIONS		THIRD ANGLE PROJECTION		DRAWING		SERIES		MATERIAL NUMBER	
				A2-SIZE		91779		SEE TABLE	
DOCUMENT STATUS		RELEASE DATE		DOC TYPE		DOC PART		REVISION	
P1		2022/01/19 08:50:13		PSD		000		L1	
DOCUMENT NUMBER		CUSTOMER		SHEET NUMBER					
917790001		GENERAL MARKET		2 OF 6					

CIRCUIT 2 CONTIN'D

MOLEX PART NO.	HOUSING NO.	CIRCUIT SIZE	COLOUR	RAL NUMBER	POSITION KEYS	CODING KEYS	LATCH POSITION	CONFIGURATION	COLOUR STRIP
91779-0039	91779-9001	2	NATURAL	9001	1a 2b	NONE	1/2		NONE
91779-0040	91779-9004	2	RED(PINK)	3014	1a 2a	01c	1/2		NONE
91779-0041	91779-9001	2	NATURAL	9001	1b 2a 2b	01c d20	1/2		NONE
91779-0042	91779-9001	2	NATURAL	9001	NONE	01c	1/2		NONE
91779-0043	91779-9005	2	NATURAL	9001	NONE	NONE	1/2b & SHORT STD LATCH 1/2		NONE
91779-0044	91779-9001	2	NATURAL	9001	1a 1b 2a 2b	01c	1/2		NONE
91779-0045	91779-9001	2	NATURAL	9001	NONE	d20	1/2		NONE
91779-0046	91779-9001	2	NATURAL	9001	NONE	NONE	1/2		NONE
91779-0047	91779-9005	2	NATURAL	9001	NONE	01c	1/2b & SHORT STD LATCH 1/2		NONE
91779-0048	91779-9005	2	NATURAL	9001	2b	01c d20	1/2b & SHORT STD LATCH 1/2		NONE
91779-0049	91779-9005	2	NATURAL	9001	1a 2b	01c d20	1/2b & SHORT STD LATCH 1/2		NONE
91779-0050	91779-9001	2	NATURAL	9001	2a 2b	NONE	1/2		NONE
91779-0051	91779-9005	2	NATURAL	9001	1a 2b	d20	1/2b & SHORT STD LATCH 1/2		NONE
91779-0052	91779-9001	2	NATURAL	9001	NONE	01c d20	1/2		NONE
91779-0053	91779-9005	2	NATURAL	9001	1a 2b	NONE	1/2b & SHORT STD LATCH 1/2		NONE
91779-0054	91779-9004	2	RED(PINK)	3014	1a 1b 2a 2b	01c d20	1/2		NONE
91779-0055	91779-9004	2	RED(PINK)	3014	1a 1b 2a 2b	01c	1/2		NONE
91779-0056	91779-9004	2	RED(PINK)	3014	1a 1b 2a 2b	d20	1/2		NONE
91779-0057	91779-9004	2	RED(PINK)	3014	1a 2b	d20	1/2		NONE
91779-0058	91779-9001	2	NATURAL	9001	1a 2b	d20	1/2		NONE
91779-0059	91779-9001	2	NATURAL	9001	1a 2a	01c	1/2		NONE

CIRCUIT 2 CONTIN'D

MOLEX PART NO.	HOUSING NO.	CIRCUIT SIZE	COLOUR	RAL NUMBER	POSITION KEYS	CODING KEYS	LATCH POSITION	CONFIGURATION	COLOUR STRIP
91779-0061	91779-9004	2	RED(PINK)	3014	2a	01c d20	1/2		NONE
91779-0062	91779-9004	2	RED(PINK)	3014	1a 2b	NONE	1/2		NONE
91779-0063	91779-9001	2	NATURAL	9001	1a 2b	01c	1/2		NONE
91779-0064	91779-9001	2	NATURAL	9001	1b	d20	1/2		NONE
91779-0065	91779-9001	2	NATURAL	9001	2b	01c d20	1/2		NONE
91779-0066	91779-9004	2	RED(PINK)	3014	1b 2a	01c d20	1/2		NONE



THIS DRAWING CONTAINS INFORMATION THAT IS PROPRIETARY TO MOLEX ELECTRONIC TECHNOLOGIES, LLC AND SHOULD NOT BE USED WITHOUT WRITTEN PERMISSION

DIMENSION UNITS mm	SCALE 1:1	CURRENT REV DESC: Obsoleted part number as per PCN#511465	molex		
GENERAL TOLERANCES (UNLESS SPECIFIED)		EC NO: 691224			
ANGULAR TOL ± °		DRWN: SUGEEB	2022/01/19		
4 PLACES ±		CHK'D: GGA	2022/01/19		
3 PLACES ±		APPR: GGA	2022/01/19		
2 PLACES ± 0.05		INITIAL REVISION:			
1 PLACE ± 0.1		DRWN: AKABADI	2017/04/17		
0 PLACES ±		APPR: BRUTTLE	2017/07/26		
DRAFT WHERE APPLICABLE MUST REMAIN WITHIN DIMENSIONS	THIRD ANGLE PROJECTION	DRAWING A2-SIZE	SERIES 91779	MATERIAL NUMBER SEE TABLE	CUSTOMER GENERAL MARKET
DOCUMENT NUMBER 917790001		DOC TYPE PSD	DOC PART 000	REVISION L1	
SHEET NUMBER 3 OF 6					

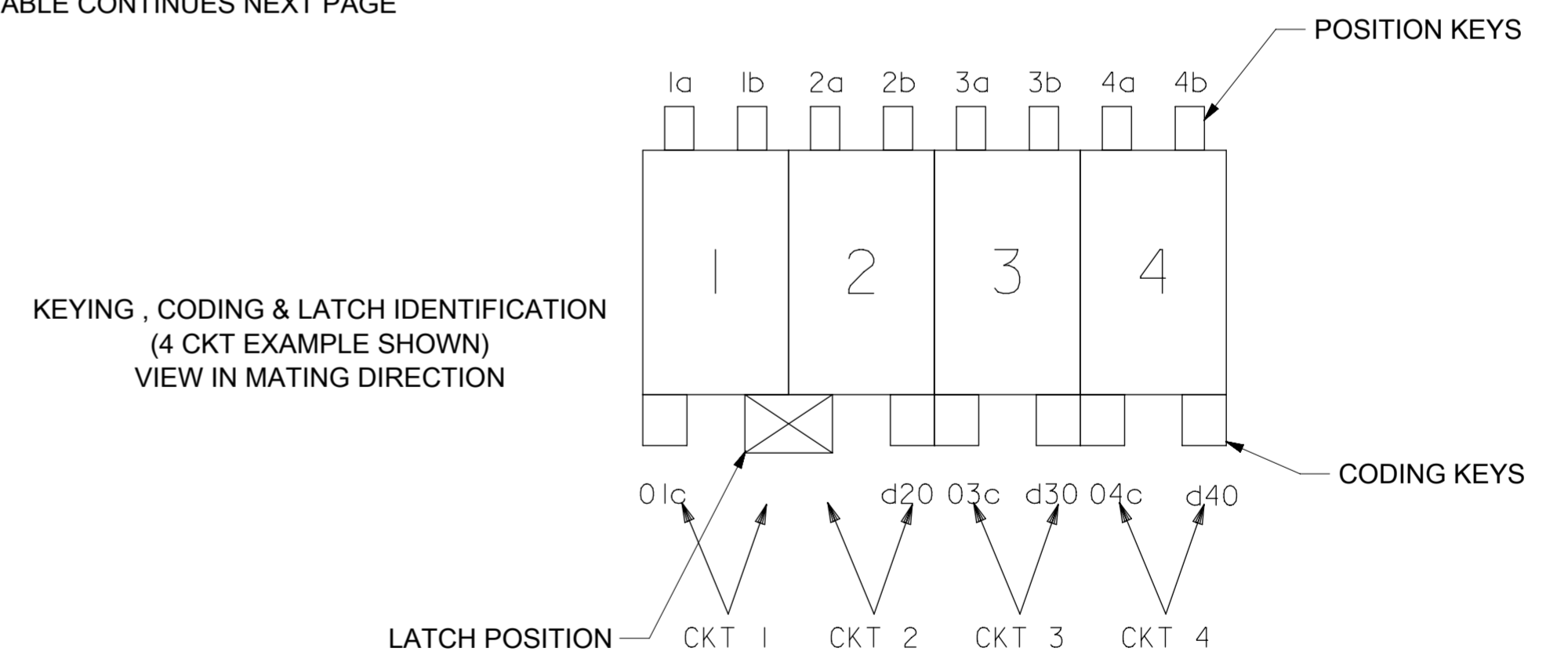
3 CIRCUIT

MOLEX PART NO.	HOUSING NO.	CIRCUIT SIZE	COLOUR	RAL NUMBER	POSITION KEYS	CODING KEYS	LATCH POSITION	CONFIGURATION	COLOUR STRIP
91779-0101	91779-9101	3	NATURAL	9001	1a 1b 2a 2b 3a 3b	01c d20 03c d30	1/2		NONE
91779-0102	91779-9102	3	NATURAL	9001	1a 1b 2a 2b 3a 3b	01c d10 02c d30	2/3		NONE
91779-0103	91779-9101	3	NATURAL	9001	1b	01c d20	1/2		NONE
91779-0104	91779-9102	3	NATURAL	9001	2a	d10 d30	2/3		NONE
91779-0105	91779-9102	3	NATURAL	9001	3b	02c d30	2/3		NONE
91779-0106	91779-9101	3	NATURAL	9001	NONE	NONE	1/2		NONE
91779-0107	91779-9101	3	NATURAL	9001	1b	01c d20	1/2		RED
91779-0108	91779-9101	3	NATURAL	9001	1a	01c d20	1/2		NONE
91779-0109	91779-9103	3	RED(PINK)	3014	1a 1b 2a 2b 3a 3b	NONE	2/3		NONE
91779-0111	91779-9102	3	NATURAL	9001	2b 3a	d10 d30	2/3		NONE
91779-0113	91779-9103	3	RED(PINK)	3014	1a 1b 2a 2b 3a 3b	d10	2/3		NONE
91779-0114	91779-9102	3	NATURAL	9001	1a 1b 2a 2b 3a 3b	d10	2/3		NONE
91779-0115	91779-9101	3	NATURAL	9001	NONE	03c	1/2		NONE
91779-0116	91779-9101	3	NATURAL	9001	1a 1b	d30	1/2		NONE
91779-0117	91779-9102	3	NATURAL	9001	2a	d10 02c d30	2/3		NONE
91779-0118	91779-9102	3	NATURAL	9001	2a	d10	2/3		NONE
91779-0119	91779-9101	3	NATURAL	9001	2a	01c d30	1/2		NONE

3 CIRCUIT

MOLEX PART NO.	HOUSING NO.	CIRCUIT SIZE	COLOUR	RAL NUMBER	VOID CIRCUIT	POSITION KEYS	CODING KEYS	LATCH POSITION	CONFIGURATION	COLOUR STRIP
91779-0120	91779-9102	3	NATURAL	9001	NONE	2b 3b	d30	2/3		NONE
91779-0121	91779-9101	3	NATURAL	9001	NONE	NONE	01c d30	1/2		NONE
91779-0122	91779-9103	3	RED(PINK)	3014	NONE	1b 2a 2b 3b	NONE	2/3		NONE
91779-0123	91779-9103	3	RED(PINK)	3014	2	2b 3b	d10	2/3		NONE
91779-0124	91779-9102	3	NATURAL	9001	NONE	NONE	d10 02c d30	2/3		NONE
91779-0126	91779-9101	3	NATURAL	9001	NONE	3b	01c d30	1/2		NONE
91779-0127	91779-9102	3	NATURAL	9001	NONE	1a 2a 3b	d10 d30	2/3		NONE
91779-0128	91779-9102	3	NATURAL	9001	NONE	1a 2b	NONE	2/3		NONE
91779-0129	91779-9102	3	NATURAL	9001	NONE	1a 1b 2a 2b 3a 3b	01c d30	2/3		NONE
91779-0130	91779-9101	3	NATURAL	9001	NONE	1a 3b	01c	1/2		NONE
91779-0132	91779-9102	3	NATURAL	9001	NONE	2a 3a	d30	2/3		NONE

TABLE CONTINUES NEXT PAGE

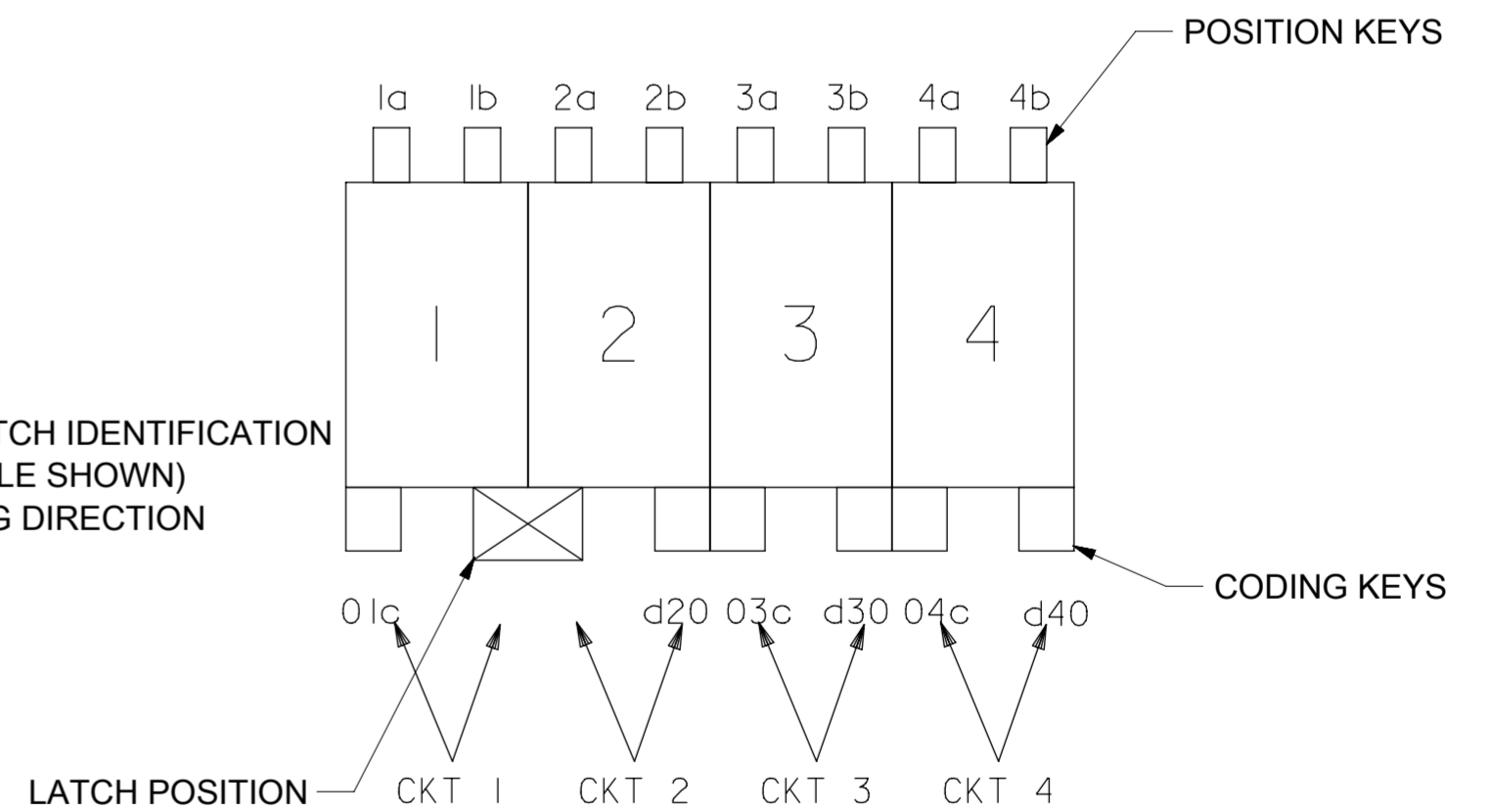


THIS DRAWING CONTAINS INFORMATION THAT IS PROPRIETARY TO MOLEX ELECTRONIC TECHNOLOGIES, LLC AND SHOULD NOT BE USED WITHOUT WRITTEN PERMISSION																
DIMENSION UNITS mm	SCALE 1:1	CURRENT REV DESC: Obsoleted part number as per PCN#511465														
GENERAL TOLERANCES (UNLESS SPECIFIED)		<div style="text-align: center;">molex</div> <p>FAST 5 INDIRECT FEMALE ASSEMBLY 16 AMPS</p> <p>PRODUCT CUSTOMER DRAWING</p>														
ANGULAR TOL	± °															
4 PLACES	±															
3 PLACES	±															
2 PLACES	± 0.05															
1 PLACE	± 0.1	EC NO: 691224	DRWN: SUGEEB	2022/01/06	<table border="1"> <tr> <td>DOCUMENT NUMBER</td> <td>DOC TYPE</td> <td>DOC PART</td> <td>REVISION</td> </tr> <tr> <td>917790001</td> <td>PSD</td> <td>000</td> <td>L1</td> </tr> </table>				DOCUMENT NUMBER	DOC TYPE	DOC PART	REVISION	917790001	PSD	000	L1
DOCUMENT NUMBER	DOC TYPE	DOC PART	REVISION													
917790001	PSD	000	L1													
0 PLACES	±	DRWN: AKABADI	2017/04/17													
DRAFT WHERE APPLICABLE MUST REMAIN WITHIN DIMENSIONS		APPR: BRUTTLE	2017/07/26													
THIRD ANGLE PROJECTION		DRAWING	SERIES	MATERIAL NUMBER	CUSTOMER	SHEET NUMBER										
		A2-SIZE	91779	SEE TABLE	GENERAL MARKET	4 OF 6										

CIRCUIT 3 CONTIN'D

MOLEX PART NO.	HOUSING NO.	CIRCUIT SIZE	COLOUR	RAL NUMBER	VOID CIRCUIT	POSITION KEYS	CODING KEYS	LATCH POSITION	CONFIGURATION	COLOUR STRIP
91779-0133	91779-9107	3	NATURAL	9001	NONE	1a 3b	01c	2/3b & SHORT STD LATCH 2/3		NONE
91779-0134	91779-9102	3	NATURAL	9001	NONE	3b	01c d30	2/3		NONE
91779-0135	91779-9108	3	NATURAL	9001	NONE	1a 2b 3a 3b	NONE	1/2b		NONE
91779-0136	91779-9107	3	NATURAL	9001	NONE	2a 3b	NONE	2/3b & SHORT STD LATCH 2/3		NONE
91779-0137	91779-9107	3	NATURAL	9001	NONE	NONE	NONE	2/3b & SHORT STD LATCH 2/3		NONE
91779-0138	91779-9102	3	NATURAL	9001	NONE	2a	d10 d30	2/3		NONE
91779-0139	91779-9102	3	NATURAL	9001	NONE	1a 3b	d10	2/3		NONE
91779-0140	91779-9102	3	NATURAL	9001	NONE	2a 2b	NONE	2/3		NONE
91779-0141	91779-9102	3	NATURAL	9001	NONE	1a 3b	NONE	2/3		NONE
91779-0142	91779-9101	3	NATURAL	9001	NONE	1a 1b	d20	1/2		NONE
91779-0143	91779-9101	3	NATURAL	9001	NONE	1a 3a	01c	1/2		NONE
91779-0144	91779-9105	3	RED(PINK)	3014	NONE	1a 1b 2a 2b 3a 3b	d20	1/2		NONE
91779-0145	91779-9105	3	RED(PINK)	3014	NONE	1a	d20	1/2		NONE
91779-0146	91779-9102	3	NATURAL	9001	NONE	3b	d10 d30	2/3		NONE
91779-0147	91779-9101	3	NATURAL	9001	NONE	1a 1b 2a 2b 3a 3b	01c d20 03c	1/2		BLUE
91779-0148	91779-9105	3	RED(PINK)	3014	NONE	1a 1b 2a 2b 3a 3b	01c d20 03c d30	1/2		NONE
91779-0149	91779-9105	3	RED(PINK)	3014	NONE	1b	01c d20	1/2		NONE
91779-0150	91779-9102	3	NATURAL	9001	NONE	2b 3b	01c d10 02c d30	2/3		NONE
91779-0151	91779-9101	3	NATURAL	9001	NONE	2b 3a 3b	01c d20 03c d30	1/2		NONE
91779-0152	91779-9101	3	NATURAL	9001	NONE	2a 3a	01c d20 03c	1/2		NONE
91779-0153	91779-9101	3	NATURAL	9001	NONE	1a 3a	03c	1/2		NONE

KEYING, CODING & LATCH IDENTIFICATION
(4 CKT EXAMPLE SHOWN)
VIEW IN MATING DIRECTION



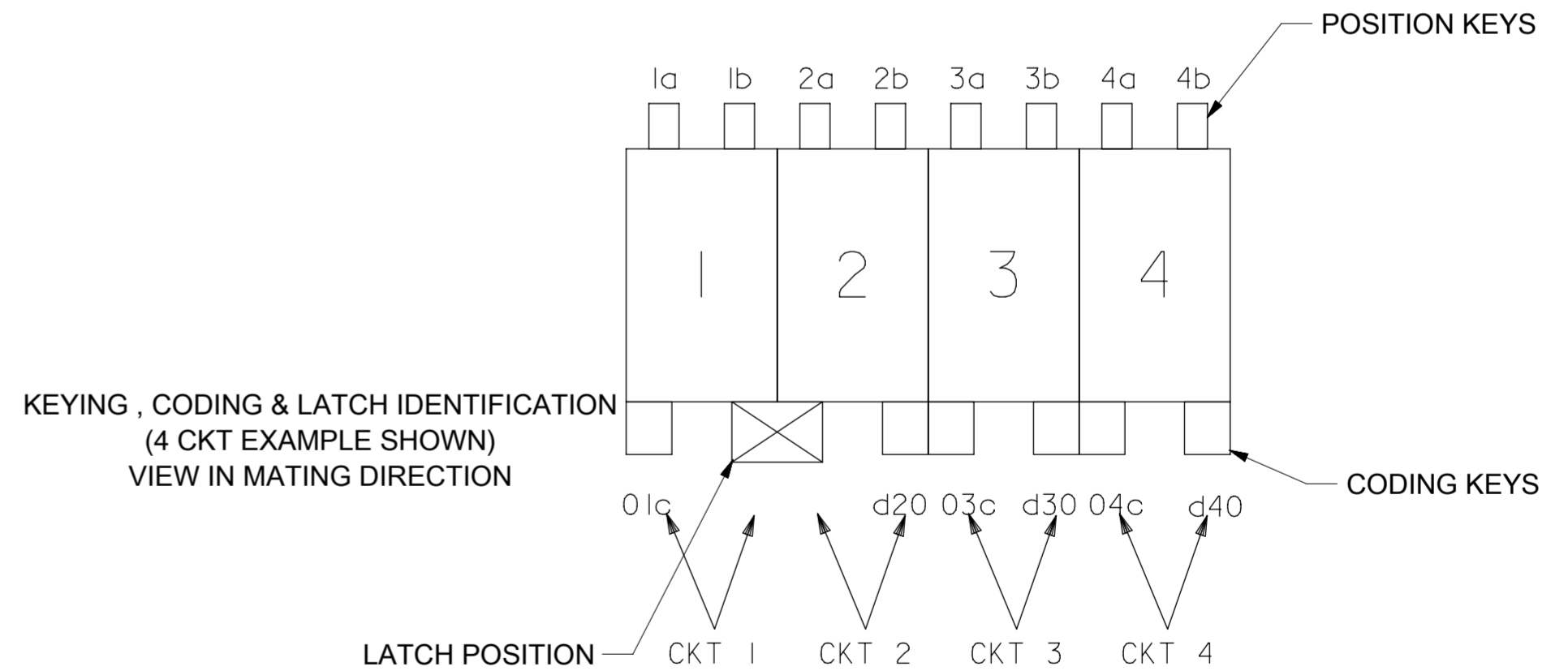
THIS DRAWING CONTAINS INFORMATION THAT IS PROPRIETARY TO MOLEX ELECTRONIC TECHNOLOGIES, LLC AND SHOULD NOT BE USED WITHOUT WRITTEN PERMISSION													
DIMENSION UNITS mm		SCALE 1:1		CURRENT REV DESC: Obsoleted part number as per PCN#511465			molex			DOCUMENT NUMBER 917790001	DOC TYPE PSD	DOC PART 000	REVISION L1
GENERAL TOLERANCES (UNLESS SPECIFIED)				EC NO: 691224									
ANGULAR TOL ± °		4 PLACES ±		DRWN: SUGEEB			2022/01/06			PRODUCT CUSTOMER DRAWING			
3 PLACES ±		2 PLACES ± 0.05		CHK'D: GGA			2022/01/19						
1 PLACE ± 0.1		0 PLACES ±		APPR: GGA			2022/01/19						
INITIAL REVISION:				DRWN: AKABADI			2017/04/17						
DRAFT WHERE APPLICABLE MUST REMAIN WITHIN DIMENSIONS				APPR: BRUTTLE			2017/07/26						
THIRD ANGLE PROJECTION		DRAWING		SERIES		MATERIAL NUMBER		CUSTOMER		SHEET NUMBER			
		A2-SIZE		91779		SEE TABLE		GENERAL MARKET		5 OF 6			

4 CIRCUIT

MOLEX PART NO.	HOUSING NO.	CIRCUIT SIZE	COLOUR	RAL NUMBER	POSITION KEYS	CODING KEYS	LATCH POSITION	CONFIGURATION	COLOUR STRIP
91779-0201	91779-9201	4	NATURAL		1a 1b 2a 2b 3a 3b 4a 4b	01c d20 03c d40	1/2, 3/4		NONE
91779-0202	91779-9201	4	NATURAL	9001	1b	03c d40	1/2, 3/4		NONE
91779-0203	91779-9201	4	NATURAL	9001	1a 3a 3b	01c d20 d40	1/2, 3/4		NONE
91779-0204	91779-9202	4	NATURAL	9001	NONE	d20	1/2		NONE
91779-0205	91779-9201	4	NATURAL	9001	2a, 4b	d20	1/2, 3/4		NONE
91779-0206	91779-9201	4	NATURAL	9001	2b	d20	1/2, 3/4		NONE
91779-0207	91779-9207	4	NATURAL	9001	3a	01c d20 03c d40	3/4		NONE
91779-0208	91779-9201	4	NATURAL	9001	3a	01c d20 03c d40	1/2, 3/4		NONE
91779-0209	91779-9208	4	NATURAL	9001	1a 2b 3b 4b	01c d10 02c d30 04c d40	2/3		NONE
91779-0210	91779-9201	4	NATURAL	9001	1a 1b 2b 3a 3b 4b	d20 d40	1/2, 3/4		NONE
91779-0211	91779-9201	4	NATURAL	9001	2a 2b 3b 4b	01c d20 03c d40	1/2, 3/4		NONE
91779-0212	91779-9201	4	NATURAL	9001	2a 3a 4b	01c	1/2, 3/4		NONE
91779-0213	91779-9202	4	NATURAL	9001	2a 4b	01c d30	1/2		NONE
91779-0214	91779-9202	4	NATURAL	9001	1a 1b 2a 2b 3a 3b 4a 4b	01c d20 03c d30 04c d40	1/2		NONE
91779-0215	91779-9201	4	NATURAL	9001	1a 2b 3b	d40	1/2, 3/4		NONE

4 CIRCUIT

MOLEX PART NO.	HOUSING NO.	CIRCUIT SIZE	COLOUR	RAL NUMBER	POSITION KEYS	CODING KEYS	LATCH POSITION	CONFIGURATION	COLOUR STRIP
91779-0216	91779-9201	4	NATURAL	9001	1b 2a 3a 4b	01c d40	1/2, 3/4		NONE
91779-0218	91779-9201	4	NATURAL	9001	1a 1b 3a 3b	03c d40	1/2, 3/4		NONE
91779-0219	91779-9201	4	NATURAL	9001	1b 2a 3a 4a	01c d20 03c	1/2, 3/4		NONE
91779-0220	91779-9207	4	NATURAL	9001	1a 1b 2a 2b 3a 4b	01c d40	3/4		NONE
91779-0221	91779-9202	4	NATURAL	9001	1a 1b 2a 2b 3a 4b	01c d40	1/2		NONE
91779-0222	91779-9208	4	NATURAL	9001	1a 1b 2a 2b 3a 4b	01c d40	2/3		NONE
91779-0223	91779-9209	4	NATURAL	9001	1a 2b	04c	1/2b 3/4b & SHORT STD LATCH 1/2		NONE
91779-0224	91779-9209	4	NATURAL		2b	04c	1/2b 3/4b & SHORT STD LATCH 1/2		NONE
91779-0225	91779-9210	4	NATURAL	9001	1a 2b	04c	1/2b & SHORT STD LATCH 1/2		NONE



THIS DRAWING CONTAINS INFORMATION THAT IS PROPRIETARY TO MOLEX ELECTRONIC TECHNOLOGIES, LLC AND SHOULD NOT BE USED WITHOUT WRITTEN PERMISSION										
DIMENSION UNITS	SCALE	CURRENT REV DESC: Obsolete part number as per PCN#511465								
mm	1:1									
GENERAL TOLERANCES (UNLESS SPECIFIED)										
ANGULAR TOL	± °	EC NO: 691224 DRWN: SUGEEB 2022/01/06 CHK'D: GGA 2022/01/19 APPR: GGA 2022/01/19								
4 PLACES	±	INITIAL REVISION: DRWN: AKABADI 2017/04/17 APPR: BRUTTLE 2017/07/26								
3 PLACES	±									
2 PLACES	± 0.05	PRODUCT CUSTOMER DRAWING								
1 PLACE	± 0.1	DOCUMENT NUMBER			DOC TYPE	DOC PART	REVISION	A		
0 PLACES	±	917790001			PSD	000	L1			
DRAFT WHERE APPLICABLE MUST REMAIN WITHIN DIMENSIONS		THIRD ANGLE PROJECTION	DRAWING	SERIES	MATERIAL NUMBER	CUSTOMER	SHEET NUMBER			
			A2-SIZE	91779	SEE TABLE	GENERAL MARKET	6 OF 6			