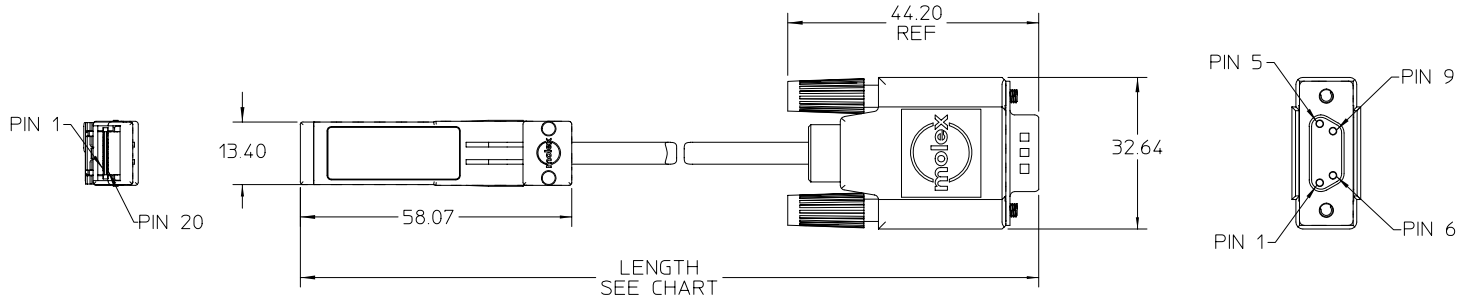
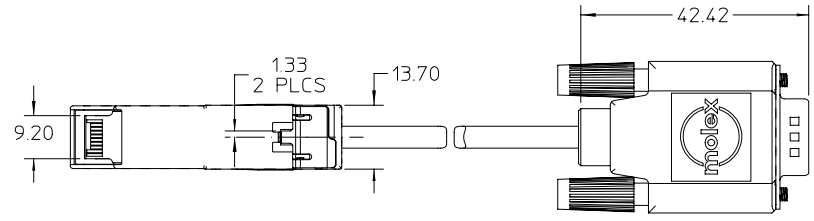
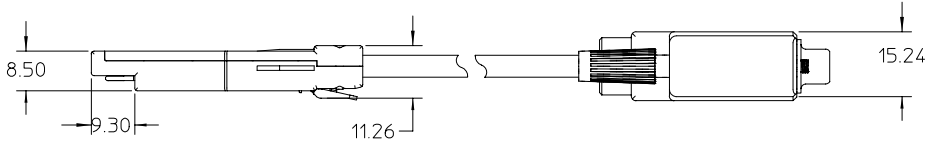


| WIRING DIAGRAM |        |      |        |
|----------------|--------|------|--------|
| SFP            |        | DB-9 |        |
| PIN            | SIGNAL | PIN  | SIGNAL |
| 19             | Tx-    | 9    | Rx-    |
| 18             | Tx+    | 5    | Rx+    |
| 13             | Rx+    | 1    | Tx+    |
| 12             | Rx-    | 6    | Tx-    |



SFP MALE DB-9



| PART NUMBER | LENGTH       |
|-------------|--------------|
| 73929-1001  | 1 M ± 0.05 M |
| 73929-1002  | 3 M ± 0.07 M |
| 73929-1003  | 5 M ± 0.08 M |
| 73929-1005  | 2 M ± 0.06 M |
| 73929-1006  | 4 M ± 0.07 M |

SFP NOTES:

- MATERIALS  
 BACKSHELLS - NICKEL PLATED ZINC  
 LATCH - GLASS FILLED POLYCARBONATE  
 PCB - FR-4  
 RIVETS - TIN PLATED STEEL
- IMPEDANCE MATCHING SFP (100 OHMS) TO DB-9 (150 OHMS)

DB-9 NOTES:

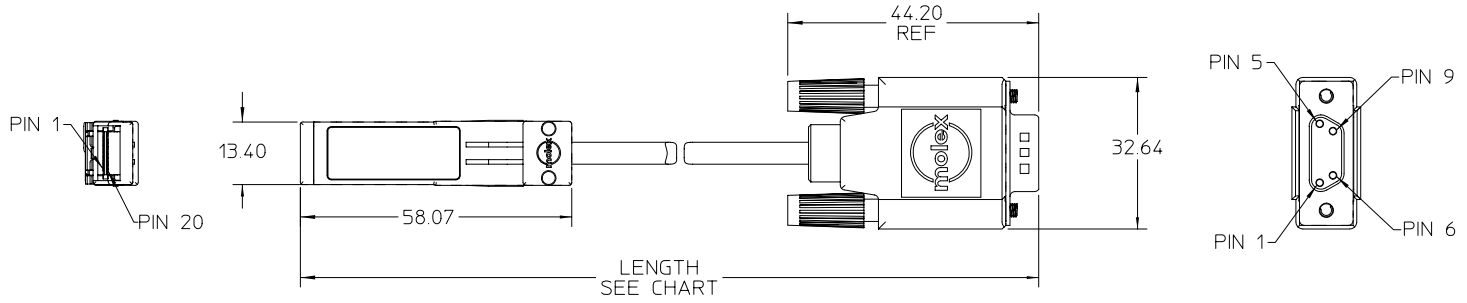
- MATERIALS  
 CONTACTS - GOLD PLATED BRASS  
 SHIELD - TIN PLATED STEEL  
 BOOT - BLACK PVC  
 JACKSCREWS  
 SCREW - STEEL  
 HEAD - PVC
- CHARACTERISTIC IMPEDANCE 150 ± 10 OHMS MEASURED DIFFERENTIAL

CABLE NOTES:

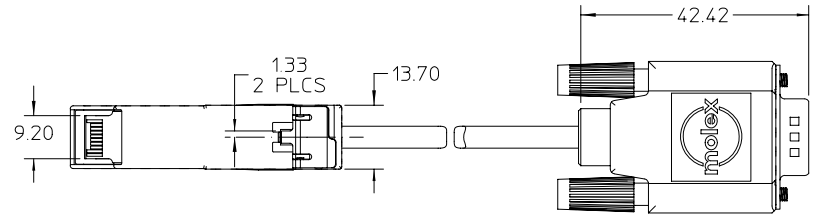
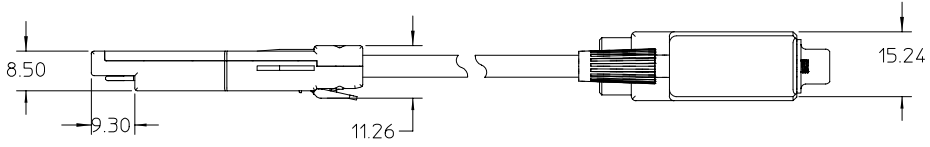
- CHARACTERISTIC IMPEDANCE 150 ± 10 OHMS MEASURED DIFFERENTIAL
- SEE MOLEX DRAWINGS SD-71153-7\*\*\* FOR FURTHER DETAILS

|   |                 |   |                                   |  |                        |                    |
|---|-----------------|---|-----------------------------------|--|------------------------|--------------------|
| EC NO: <b>UOT20026803</b><br>DRAWN: DSLEWIS 2002/03/08<br>CHK: DDOYE 2002/02/12<br>APPR: DDOYE 2002/02/14                     | QUALITY SYMBOLS | GENERAL TOLERANCES (UNLESS SPECIFIED)   | SCALE 1:1                         | DESIGN UNITS METRIC  | THIRD ANGLE PROJECTION | REVISE ON CAD ONLY |
|   | -0<br>C=0       | 4 PLACES ± --- ± ---<br>3 PLACES ± --- ± ---<br>2 PLACES ± 0.25 ± ---<br>1 PLACE ± 0.3 ± ---<br>ANGULAR ± 2 ° | DIMENSION STYLE<br>MM ONLY        | TITLE  |                        |                    |
|   |                 | DRAFT WHERE APPLICABLE  | DRAWN BY DATE<br>DSL 2001/12/13   | SFP PLUG TO MALE DB-9<br>FIBRE CHANNEL (150 OHM)<br>CABLE ASSEMBLY |                        |                    |
|   |                 | MUST REMAIN WITHIN DIMENSIONS   | CHECKED BY DATE<br>DLD 2001/12/17 | MOLEX INCORPORATED   |                        |                    |
| REV   | DESCRIPTION     | APPROVED BY DATE  | MATERIAL NO.                      | DOCUMENT NO.   | SHEET NO.              |                    |
| A   |                 | DLD 1002/12/17  | 739291001                         | SD-73929-100   | 1 OF 1                 | B                  |
| THIS DRAWING CONTAINS INFORMATION THAT IS PROPRIETARY TO MOLEX INCORPORATED AND SHOULD NOT BE USED WITHOUT WRITTEN PERMISSION |                 |   |                                   |  |                        |                    |

| WIRING DIAGRAM |        |      |        |
|----------------|--------|------|--------|
| SFP            |        | DB-9 |        |
| PIN            | SIGNAL | PIN  | SIGNAL |
| 19             | Tx-    | 9    | Rx-    |
| 18             | Tx+    | 5    | Rx+    |
| 13             | Rx+    | 1    | Tx+    |
| 12             | Rx-    | 6    | Tx-    |



SFP MALE DB-9



| PART NUMBER | LENGTH       |
|-------------|--------------|
| 73929-1001  | 1 M ± 0.05 M |
| 73929-1002  | 3 M ± 0.07 M |
| 73929-1003  | 5 M ± 0.08 M |
| 73929-1005  | 2 M ± 0.06 M |
| 73929-1006  | 4 M ± 0.07 M |

SFP NOTES:

- MATERIALS  
BACKSHELLS - NICKEL PLATED ZINC  
LATCH - GLASS FILLED POLYCARBONATE  
PCB - FR-4  
RIVETS - TIN PLATED STEEL
- IMPEDANCE MATCHING SFP (100 OHMS) TO DB-9 (150 OHMS)

DB-9 NOTES:

- MATERIALS  
CONTACTS - GOLD PLATED BRASS  
SHIELD - TIN PLATED STEEL  
BOOT - BLACK PVC  
JACKSCREWS  
SCREW - STEEL  
HEAD - PVC
- CHARACTERISTIC IMPEDANCE 150 ± 10 OHMS MEASURED DIFFERENTIAL

CABLE NOTES:

- CHARACTERISTIC IMPEDANCE 150 ± 10 OHMS MEASURED DIFFERENTIAL
- SEE MOLEX DRAWINGS SD-71153-7\*\*\* FOR FURTHER DETAILS

|   |                               |   |                                   |  |                        |                    |  |
|---|-------------------------------|---|-----------------------------------|--|------------------------|--------------------|--|
| EC NO: <b>UOT20026803</b><br>DRAWN: DSLEWIS 2002/03/08<br>CHK: DDOYE 2002/02/12<br>APPR: DDOYE 2002/02/14                     | QUALITY SYMBOLS               | GENERAL TOLERANCES (UNLESS SPECIFIED)   | SCALE 1:1                         | DESIGN UNITS METRIC  | THIRD ANGLE PROJECTION | REVISE ON CAD ONLY |  |
|   | DESCRIPTION<br>▽ = 0<br>◻ = 0 | 4 PLACES ± --- ± ---<br>3 PLACES ± --- ± ---<br>2 PLACES ± 0.25 ± ---<br>1 PLACE ± 0.3 ± ---<br>ANGULAR ± 2 ° | DIMENSION STYLE<br>MM ONLY        | TITLE  |                        |                    |  |
|   |                               | DRAFT WHERE APPLICABLE  | DRAWN BY DATE<br>DSL 2001/12/13   | SFP PLUG TO MALE DB-9<br>FIBRE CHANNEL (150 OHM)<br>CABLE ASSEMBLY |                        |                    |  |
|   |                               | MUST REMAIN WITHIN DIMENSIONS   | CHECKED BY DATE<br>DLD 2001/12/17 | MOLEX INCORPORATED   |                        |                    |  |
| REV   |                               | APPROVED BY DATE  | MATERIAL NO.                      | DOCUMENT NO.   | SHEET NO.              |                    |  |
| A   |                               | DLD 1002/12/17  | 739291001                         | SD-73929-100   | 1 OF 1                 | B                  |  |
| THIS DRAWING CONTAINS INFORMATION THAT IS PROPRIETARY TO MOLEX INCORPORATED AND SHOULD NOT BE USED WITHOUT WRITTEN PERMISSION |                               |   |                                   |  |                        |                    |  |