



Please note that Cypress is an Infineon Technologies Company.

The document following this cover page is marked as “Cypress” document as this is the company that originally developed the product. Please note that Infineon will continue to offer the product to new and existing customers as part of the Infineon product portfolio.

Continuity of document content

The fact that Infineon offers the following product as part of the Infineon product portfolio does not lead to any changes to this document. Future revisions will occur when appropriate, and any changes will be set out on the document history page.

Continuity of ordering part numbers

Infineon continues to support existing part numbers. Please continue to use the ordering part numbers listed in the datasheet for ordering.



FM4-U120-9B560 Quick Start Guide

Doc. No. 002-05534 Rev. *A

Cypress Semiconductor
198 Champion Court
San Jose, CA 95134-1709
Phone (USA): 800.858.1810
Phone (Intl): +1 408.943.2600
www.cypress.com

© Cypress Semiconductor Corporation, 2015- 2016. This document is the property of Cypress Semiconductor Corporation and its subsidiaries, including Spansion LLC (“Cypress”). This document, including any software or firmware included or referenced in this document (“Software”), is owned by Cypress under the intellectual property laws and treaties of the United States and other countries worldwide. Cypress reserves all rights under such laws and treaties and does not, except as specifically stated in this paragraph, grant any license under its patents, copyrights, trademarks, or other intellectual property rights. If the Software is not accompanied by a license agreement and you do not otherwise have a written agreement with Cypress governing the use of the Software, then Cypress hereby grants you a personal, non-exclusive, nontransferable license (without the right to sublicense) (1) under its copyright rights in the Software (a) for Software provided in source code form, to modify and reproduce the Software solely for use with Cypress hardware products, only internally within your organization, and (b) to distribute the Software in binary code form externally to end users (either directly or indirectly through resellers and distributors), solely for use on Cypress hardware product units, and (2) under those claims of Cypress’s patents that are infringed by the Software (as provided by Cypress, unmodified) to make, use, distribute, and import the Software solely for use with Cypress hardware products. Any other use, reproduction, modification, translation, or compilation of the Software is prohibited.

TO THE EXTENT PERMITTED BY APPLICABLE LAW, CYPRESS MAKES NO WARRANTY OF ANY KIND, EXPRESS OR IMPLIED, WITH REGARD TO THIS DOCUMENT OR ANY SOFTWARE OR ACCOMPANYING HARDWARE, INCLUDING, BUT NOT LIMITED TO, THE IMPLIED WARRANTIES OF MERCHANTABILITY AND FITNESS FOR A PARTICULAR PURPOSE. To the extent permitted by applicable law, Cypress reserves the right to make changes to this document without further notice. Cypress does not assume any liability arising out of the application or use of any product or circuit described in this document. Any information provided in this document, including any sample design information or programming code, is provided only for reference purposes. It is the responsibility of the user of this document to properly design, program, and test the functionality and safety of any application made of this information and any resulting product. Cypress products are not designed, intended, or authorized for use as critical components in systems designed or intended for the operation of weapons, weapons systems, nuclear installations, life-support devices or systems, other medical devices or systems (including resuscitation equipment and surgical implants), pollution control or hazardous substances management, or other uses where the failure of the device or system could cause personal injury, death, or property damage (“Unintended Uses”). A critical component is any component of a device or system whose failure to perform can be reasonably expected to cause the failure of the device or system, or to affect its safety or effectiveness. Cypress is not liable, in whole or in part, and you shall and hereby do release Cypress from any claim, damage, or other liability arising from or related to all Unintended Uses of Cypress products. You shall indemnify and hold Cypress harmless from and against all claims, costs, damages, and other liabilities, including claims for personal injury or death, arising from or related to any Unintended Uses of Cypress products.

Cypress, the Cypress logo, Spansion, the Spansion logo, and combinations thereof, WICED, PSoC, CapSense, EZ-USB, F-RAM, and Traveo are trademarks or registered trademarks of Cypress in the United States and other countries. For a more complete list of Cypress trademarks, visit cypress.com. Other names and brands may be claimed as property of their respective owners.

Contents



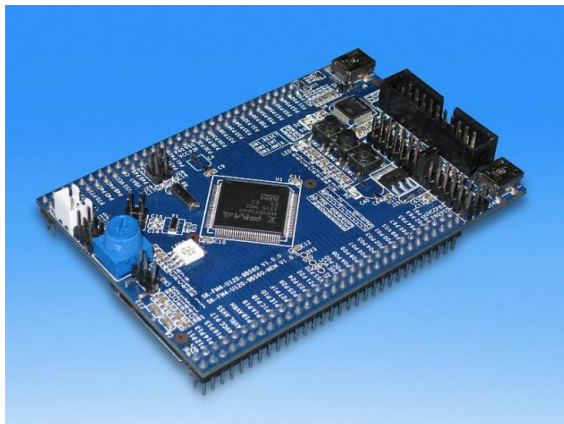
1. Introduction.....	4
1.1 FM4-U120-9B560 Starter Kit	4
1.2 Setup Requirements.....	4
2. Windows USB Driver Installation	5
3. Install the Virtual Communication Port	6
4. Powering FM4-U120-9B560 Starter Kit	7
5. Run PCB Board Test Demonstration	8
6. Additional Resources.....	11
Revision History.....	12
Document Revision History	12

1. Introduction



1.1 FM4-U120-9B560 Starter Kit

FM4-U120-9B560 Starter Kit provides a low-cost solution to quickly start development on an ARM[®] Cortex[®]-M4 microcontroller. The FM4 MB9BF568R microcontroller comes pre-programmed with an interactive application to test all of the on-board features using a virtual communication port to send message prompts, input test parameters and output test results. This document will guide users on how to connect to the board and run the featured demonstration in less than 10 minutes.



- ARM[®] Cortex[®]-M4 core MCU
- CMSIS-DAP JTAG adapter
- User buttons
- RGB LED
- Potentiometer
- Flexible programming options
- SD Card slot
- External Flash and SRAM *
- USB Cable

(*FM4-U120-9B560-MEM)

1.2 Setup Requirements

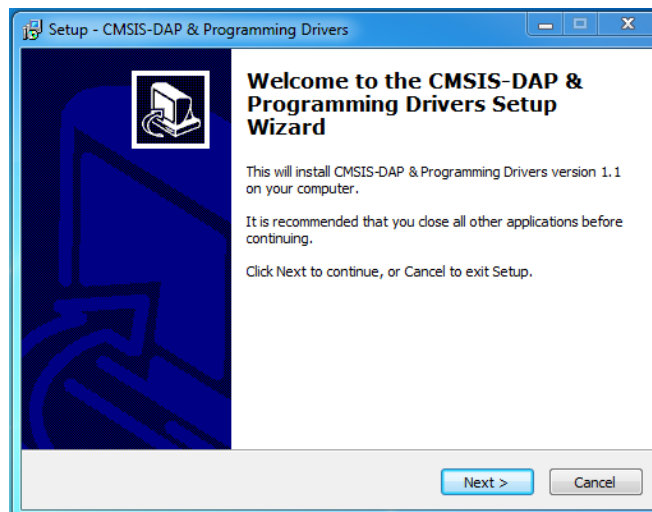
- PC with USB interface, Windows OS XP, or later
- FM4-U120-9B560 starter kit with USB cable (A/mini B)
- Download Complete Driver, Documentation, Software, & Tools Package
<http://www.cypress.com/documentation/development-kitsboards/fm4-u120-9b560-arm-cortex-m4-mcu-starter-kit-usb-and-cmsis-dap>.

2. Windows USB Driver Installation

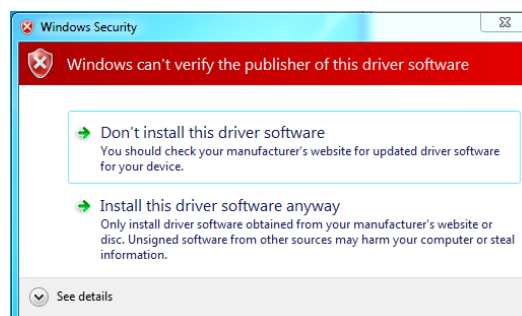


Windows USB drivers that are specific to the FM4-U120-9B560 starter kit need to be installed to run the virtual communication port. Follow the below instructions to install the Windows USB drivers.

1. In the downloaded FM4-U120-9B560_CDvnn* (*version number) folder browse to /drivers/driverinstaller.exe and run the application. Click the next prompt.



2. During the installation a warning may appear that the publisher cannot be verified depending on Windows security settings. Select, 'install this driver software anyway.' Two drivers are being installed, cmsis-dap and usbdirect. The Windows security window will appear twice, and 'Install this driver software anyway' will need to be selected each time.



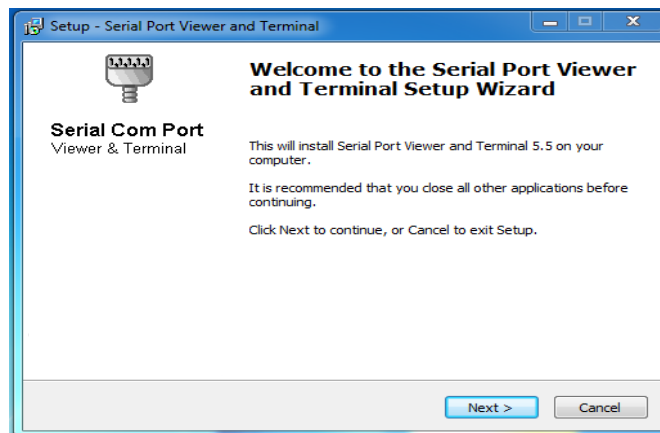
3. When installation is complete, click the finish button when prompted.

3. Install the Virtual Communication Port

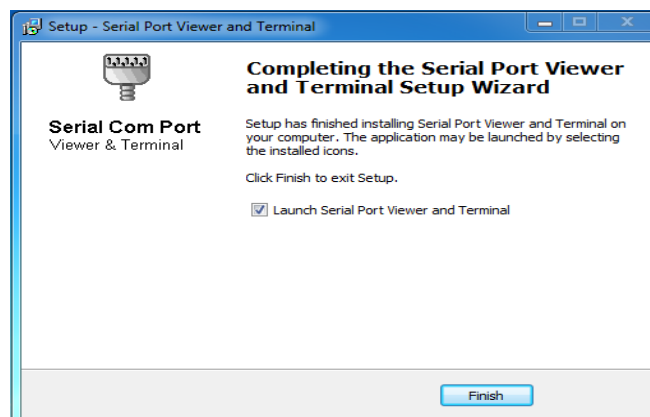


The FM4-U120-9B560_CDvnn* download includes a serial communication terminal, Cypress Serial Port Viewer and Terminal, for the communication interface. Follow the instructions below to install.

1. Open the FM4-U120-9B560_CDvnn folder and browse to /tools/serialportviewer/setup.exe and run the application. Click the next button.



2. Review the license agreement, click I accept the agreement, and the next button.
3. Select a destination for the application or leave the default location, and click next.
4. Select a destination for the application shortcut or leave it in default location, and click next.
5. Select additional icon options and click next.
6. Select install to start the installation.
7. Check the box next to Launch Serial Port Viewer and Terminal and click finished.

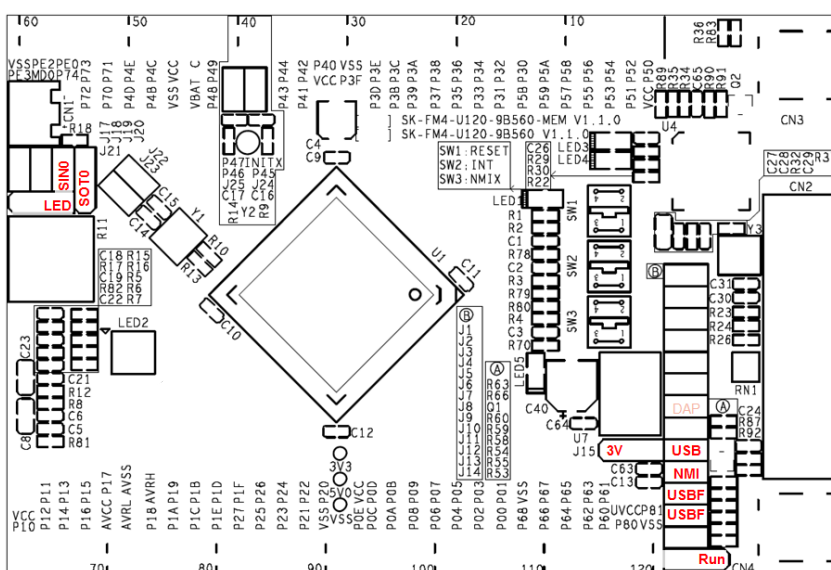


4. Powering FM4-U120-9B560 Starter Kit



There are four options for powering the FM4-U120-9B560 starter kit. This document will only use two of those options, USB connection at either CN3 or CN4. Connect the USB cable to CN4 to power the board. The green power LED5 will illuminate. If it does not, ensure that jumper J9 is in closed position as shown in figure 1.0 for default jumper settings.

Figure 4-1. Default Jumper Settings

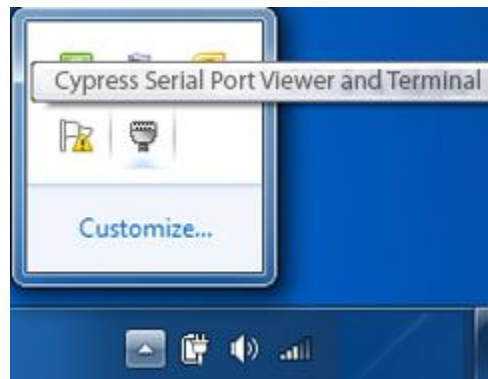


5. Run PCB Board Test Demonstration



The pre-programmed demonstration tests the on-board features for proper functionality. The application will already be running in the MB9BF568R microcontroller when the FM4-U120-9B560 starter kit is powered on. Follow the below instructions to connect the virtual communication port created by test application to the Cypress Serial Port Viewer and Terminal.

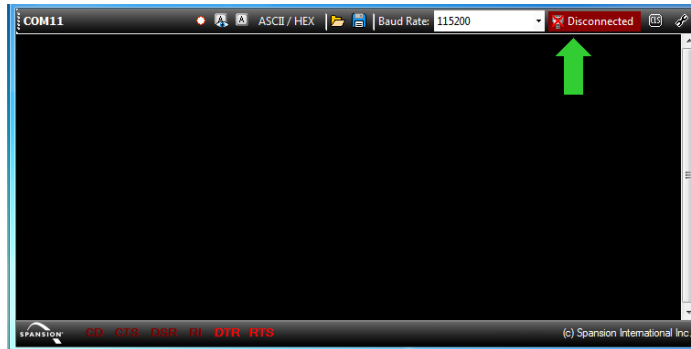
1. Open the Cypress Serial Port Viewer and Terminal by selecting the icon in the task menu or desktop short cut.



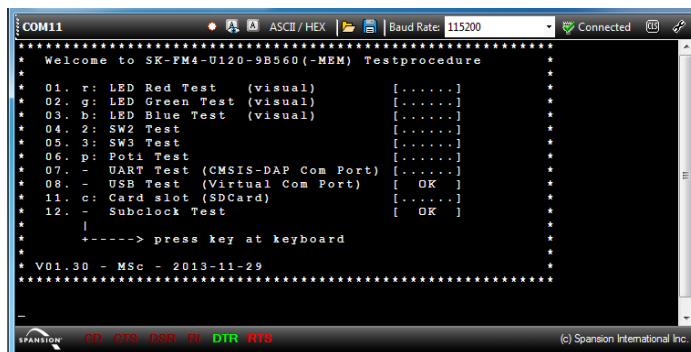
2. Choose the Cypress Virtual Communication Port.



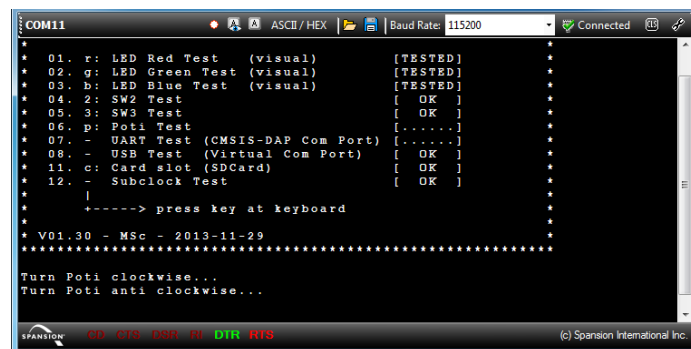
- Set the baud rate to 115200 in the drop down menu and click disconnected above the green arrow to connect.



- Once the terminal is connected, press the space bar on PC keyboard and the welcome message will display. The test application will automatically run the subclock test and report the results. The space bar is used as the input for the USB test.



- To run each of the tests enter the letter next to the test description and follow the prompts. For example: p <enter> will test the potentiometer (R11). The application will prompt the user for a sequence of rotations of the potentiometer, and report the test result.



6. To run the UART test (CMSIS-DAP Com Port) the USB cable needs to be connected at CN3. Open jumper J9 and close jumper J7. Repeat steps 1 through 4 to connect the virtual communication port created by CMSIS-DAP firmware to the Cypress Serial Port Viewer and Terminal.
7. Once the terminal is connected, press the space bar on PC keyboard and the welcome message will display. The space bar is used as the input for the UART test.
8. If any issues or failures are encountered, ensure all jumpers are in default position as listed in [Figure 4-1](#).

6. Additional Resources



The MB9BF568R MCU with ARM® Cortex®-M4 core is part of Cypress's FM4 Family of microcontrollers. The FM4-U120-9B560_CDvnn download folder includes additional resources for users to easily and quickly develop their own applications on Cypress's FM4 Family of microcontrollers:

- User Guide FM4-U120-9B560 with flash programming and IDE details
- Subfolder .\documentation
 - Data Sheet and Peripheral Manuals for the MB9B560R series
- Subfolder .\drivers
 - Windows USB drivers to connect to Cypress starter kit
- Subfolder .\PDFXChange
 - Free PDF viewer that allows opening external links like are embedded in the Quick Start Guide and the User Guide
- Subfolder .\sw-examples
 - Template project and some software project examples with header files
- Subfolder .\tools
 - cmsisdap_fw_update
Latest firmware of the on-board JTAG debugger
 - PCWFM
Flash MCU Programmer – Graphical interface to program flash through UART through on-chip ROM UART boot loader.
 - Serialportviewer
Cypress Serial Port Viewer and Terminal - Serial communication terminal to be used for the UART communication interface
 - USBDIRECT
Flash USB Direct Programmer – Graphical interface to program flash through USB through on-chip ROM USB boot loader.

Revision History



Document Revision History

Document Title: FM4-U120-9B560 Quick Start Guide				
Document Number: 002-05534				
Revision	ECN	Origin of Change	Issue Date	Description of Change
**	—	HOWE	01/01/2015	Initial release.
*A	5543971	HOWE	12/15/2016	Updated to Cypress format