

1565.2

RK 16/35 N/PE BKYE



Feed-through terminal, Screw connection, Mounting type: Mounting rail TS 35/7.5, Rated cross-section: 16 mm<sup>2</sup>, Width: 12 mm, Colour: Black-yellow

## Business data

Packaging unit	50
Quantity unit	PC
Weight per piece (not including packaging)	27 g
Weight per piece (including packaging)	28.44 g
Unit of weight	G
Customs number	85369010
Country of origin	DE
Product description	Feed-through terminal

1565.2

RK 16/35 N/PE BKYE

---

## Technical data

---

### Dimensions

---

Length	54 mm
Width	12 mm
Height TS 35/7.5	47 mm

---

### Ratings

---

Rated voltage	800 V
Rated current	76 A
Rated cross-section	16 mm <sup>2</sup>
Rated impulse voltage	8 kV
Overvoltage category	III
Contamination degree	3
Maximum power dissipation for nominal condition	2.43 W

---

### Technical data

#### Connection data

Connection principle	Screw connection
Connection position	Lateral
Connections	2
Number of terminals per level	2
Number of levels	1
Wire cross-section single-core (rigid) / stranded, min.	2.5 mm <sup>2</sup>
Wire cross-section single core (rigid)/stranded, max.	25 mm <sup>2</sup>
Wire cross-section stranded, min.	2.5 mm <sup>2</sup>
Wire cross-section stranded, max.	16 mm <sup>2</sup>
Wire cross-section stranded with wire-end ferrules, min.	2.5 mm <sup>2</sup>
Wire cross-section stranded with wire-end ferrules, max.	16 mm <sup>2</sup>
Wire cross-section AWG, min.	10
Wire cross-section AWG, max.	6
Stripping length	15 mm
Screw head	Slotted
Screw threading	M 5
Tightening torque, min.	2 Nm
Tightening torque, max.	4 Nm

#### Materials

Insulation housing	Polyamide 6.6
Flammability class UL 94	V-2
Working temperature, min.	-40 °C
Working temperature, max.	105 °C

#### Further technical data

Mounting type	Mounting rail TS 35/7,5
Gauge plug acc. to EN 60 947-1	B7
Number of cross-connection channels	1

#### Print

Colour	Black-yellow
--------	--------------

# Data sheet



1565.2

RK 16/35 N/PE BKYE

---

## Technical data

---

### Environmental Product Compliance

---

REACH Conform	yes
REACH Reference date	2021-07-08
REACH Candidate Substance Note	No
RoHS Conform	yes

---

1565.2

RK 16/35 N/PE BKYE

---

## Approvals

---

### CSA approval

---

CSA File Number	042110_0_000
CSA approval	C22.2 No 158
CSA approval granted	yes
CSA Usegroup C: rated voltage	600 V
CSA Usegroup C: rated current	85 A
CSA wire cross-section AWG, min.	12
CSA wire cross-section AWG, max.	4
CSA stripping length	15 mm

### CSAus approval

---

CSAus File Number	042110_0_000
CSAus approval	UL 1059
CSAus approval granted	yes
CSAus Usegroup C: rated voltage	600 V
CSAus Usegroup C: rated current	85 A
CSAus wire cross-section AWG, min.	12
CSAus wire cross-section AWG, max.	4
CSAus stripping length	15 mm

### Approvals

#### UL Recognized

UL File Number	E95701
UL approval	UL 1059
UL Usegroup C: rated voltage	600 V
UL Usegroup C: rated current	85 A
UL wire cross-section single-core (rigid) AWG, min.	10
UL wire cross-section single-core (rigid) AWG, max.	4
UL wire cross-section stranded AWG, min.	10
UL wire cross-section stranded AWG, max.	4
UL torque	20 Lb In
UL wire material	Cu
UL factory wiring	yes
UL field wiring	yes
UL Recognized	yes

#### cUL Recognized

cUL File Number	E95701
cUL approval	C22.2 No 158
cUL Usegroup C: rated voltage	600 V
cUL Usegroup C: rated current	85 A
cUL wire cross-section single-core (rigid) AWG, min.	10
cUL wire cross-section single-core (rigid) AWG, max.	4
cUL wire cross-section stranded AWG, min.	10
cUL wire cross-section stranded AWG, max.	4
cUL torque	20 Nm
cUL wire material	Cu
cUL Recognized	yes

#### Standards and regulations

EAC approval	TR ZU 004/2011
EAC approval granted	yes

1565.2

RK 16/35 N/PE BKYE

---

## Approvals

---

### German Lloyd approval

---

GL approval	IEC 60947-7-1:2002
GL approval granted	yes
GL rated voltage	800 V
GL rated current	76 A
GL rated cross-section	16 mm <sup>2</sup>
GL environmental category	C

### KEMA KEUR approval

---

KEMA KEUR approval	EN 60947-7-1:2009
KEMA KEUR approval granted	yes
KEMA rated voltage	800 V
KEMA rated current	76 A
KEMA rated impulse voltage	8 kV
KEMA wire cross-section single core (rigid), min.	2.5 mm <sup>2</sup>
KEMA wire cross-section single-core (rigid), max.	25 mm <sup>2</sup>
KEMA wire cross-section stranded, min.	2.5 mm <sup>2</sup>
KEMA wire cross-section stranded, max.	16 mm <sup>2</sup>

---

1565.2

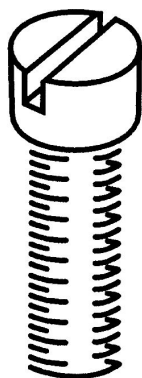
RK 16/35 N/PE BKYE

---

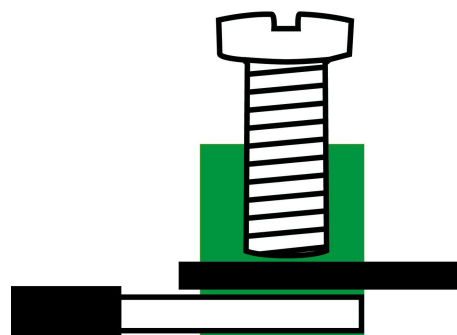
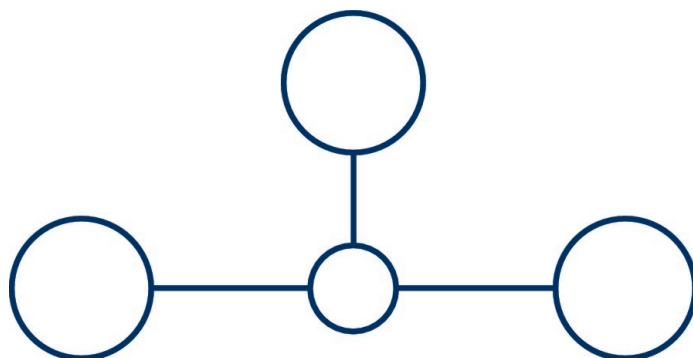
## Media

---

**M5**



**EAC**





1565.2

RK 16/35 N/PE BKYE

---



1565.2

RK 16/35 N/PE BKYE

---

## Accessories

---

### Cover

---



Cover, Length: 26.5 mm, Width: 12 mm,  
Colour: White

---

#### General order data

Product number:	Article name	GTIN (EAN)	Packaging unit
2967.0	AD 1/12/N WH	4044211056964	500 ST

---



Cover, Length: 26.5 mm, Width: 12 mm,  
Colour: Yellow

---

#### General order data

Product number:	Article name	GTIN (EAN)	Packaging unit
2955.0	AD 1/12/N/B YE	4044211056834	500 ST

---

1565.2

RK 16/35 N/PE BKYE

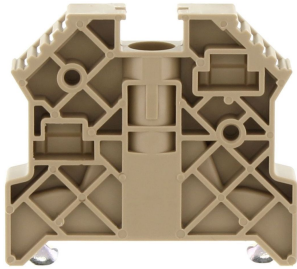
---

## Accessories

---

### End stop

---



End stop, Mounting type: Mounting rail TS  
35/7.5, Width: 9.5 mm, Colour: Beige

---

### General order data

Product number:	Article name	GTIN (EAN)	Packaging unit
2828.0	ES 35/K/ST BG	4044211055547	500 ST

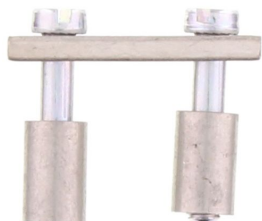
---

1565.2

RK 16/35 N/PE BKYE

## Accessories

### Cross-connector



Cross-connector, No. of poles: 2, Mounting type: Can be screwed on, Width: 20.1 mm, Rated cross-section: 16 mm<sup>2</sup>, Colour: natural

#### General order data

Product number:	Article name	GTIN (EAN)	Packaging unit
2257.0	Q 2	4044211050702	500 ST



Cross-connector, No. of poles: 10, Mounting type: Can be screwed on, Width: 115.3 mm, Rated cross-section: 16 mm<sup>2</sup>, Colour: natural

#### General order data

Product number:	Article name	GTIN (EAN)	Packaging unit
2266.0	Q 10	4044211050757	500 ST



Cross-connector, No. of poles: 3, Mounting type: Can be screwed on, Width: 32 mm, Rated cross-section: 16 mm<sup>2</sup>, Colour: natural

#### General order data

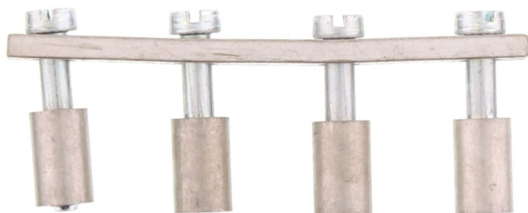
Product number:	Article name	GTIN (EAN)	Packaging unit
2258.0	Q 3	4044211050719	500 ST

1565.2

RK 16/35 N/PE BKYE

## Accessories

### Cross-connector

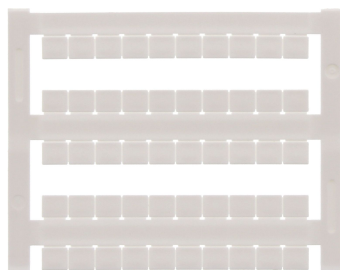


Cross-connector, No. of poles: 4, Mounting type: Can be screwed on, Width: 43.9 mm, Rated cross-section: 16 mm<sup>2</sup>, Colour: natural

#### General order data

Product number:	Article name	GTIN (EAN)	Packaging unit
2265.0	Q 4	4044211050740	500 ST

## Quick marking



Terminal marker / Pocket Maxicard, Length: 5 mm, Width: 6 mm, Colour: White

#### General order data

Product number:	Article name	GTIN (EAN)	Packaging unit
4702.7	PMC SB 6/50 WH	4044211089986	500 ST

1565.2

RK 16/35 N/PE BKYE

---

## Accessories

---

### Screwdriver

---



Screwdriver with bare blade, Colour: Black-grey

---

#### General order data

Product number:	Article name	GTIN (EAN)	Packaging unit
1087.0	SDB 0,8x4,0	4044211014803	500 ST

---