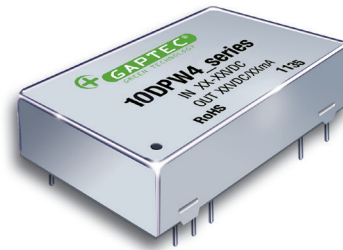


## 10DPW4 Series

10W - Single/Dual Output - Wide Input - Isolated & Regulated DC-DC Converter



### DC-DC Converter

10 Watt

- ⊕ Wide 4:1 input voltage range
- ⊕ Input/Output Isolation Voltage: 1.5KVDC
- ⊕ Operating Temperature Range: -40°C to +100°C
- ⊕ Short circuit protection (SCP)
- ⊕ Remote On/Off
- ⊕ High efficiency
- ⊕ 10W DIL package
- ⊕ Meet EN55022, Class A (Radiation)
- ⊕ Shielded Metal Case with Insulated Baseplate
- ⊕ RoHS Compliant
- ⊕ Customer Design Available



The 10DPW4 Series are isolated 10W DC/DC converters. Designed with high efficiency, they allow the operating temperature range of these units to be -40°C to +85°C with industry-standard footprint. Further features include wide 4:1 input voltage range, remote on/off control, short-circuit protection and over voltage protection.

These converters are well suitable for battery operated equipment, measurement equipment, telecom, wireless network and industry control systems. Everywhere where isolated, tightly regulated voltages and compact size are required.

Common specifications	
Short circuit protection:	Continuous, automatic recovery
Cooling:	Free air convection
Operation temperature range:	-40°C~100°C
Storage temperature range:	-55°C~+125°C
Maximum case temperature:	100°C
Switching frequency:	400kHz TYP
Storage humidity range:	95% MAX
Radiated emissions:	EN55022/Class A
Conducted emissions:	EN55022/Class A
Case material:	Five-Side Shielded Case
Potting material:	Epoxy (UL94V-0)
MTBF (MIL-HDBK-217F @25°C):	900,000 hours
Weight:	17.5g

Output specifications						
Item	Test condition	Min	Typ	Max	Units	
Output power				12	W	
Minimum load	10% of full load					
Output voltage accuracy	Full load and nominal Vin			±2	%	
Overload protection			150		%	
Line regulation	High Line to Low Line		±0.5		%	
Load regulation	Single & Dual (F.L-25%F.L)		±0.5		%	
Ripple and noise	20MHz Bandwidth			100	mVp-p	
Transient response settling time	50% load step change		350		µs	

Input specifications						
Item	Test condition	Min	Typ	Max	Units	
Input filter	Pi Type					
Protection	Fuse recommended					
Input surge voltage (100ms max.)	<ul style="list-style-type: none"> <li>• Nominal input (12V)</li> <li>• Nominal input (24V)</li> <li>• Nominal input (48V)</li> </ul>		25 50 100		VDC	
Input reflected ripple current	Nominal Vin and full load		50		mAp-p	
Start-up time	Nominal Vin and constant resistive load		500		ms	
Remote ON/OFF	<ul style="list-style-type: none"> <li>• Converter: ON</li> <li>• Converter: OFF</li> </ul>		Open or 3.5V<Vr<12V Short or 0V<Vr<1.2V			
Sourcing current of remote control pin	Nominal Vin		<0.2		mA	
Idle input current (at Remote OFF state)	Nominal Vin		<2.5		mA	

Isolation specifications						
Item	Test condition	Min	Typ	Max	Units	
Isolation voltage	Input to output	1500			VDC	
Isolation resistance	Test at 500VDC	1000			MΩ	

#### Example:

10DPW4\_2415S1.5

10= 10Watt; D= DIP; P= series; W4= wide input (4:1) 9-36Vin; 15Vout; S= single output; 1.5= 1500VDC

#### Note:

1. Only typical model listed. Non-standard models will be different from the above, please contact us for more details.
2. All specifications are typical at nominal input, full load and 25°C unless otherwise stated.
3. In this datasheet, all the test methods of indications are based on corporate standards.

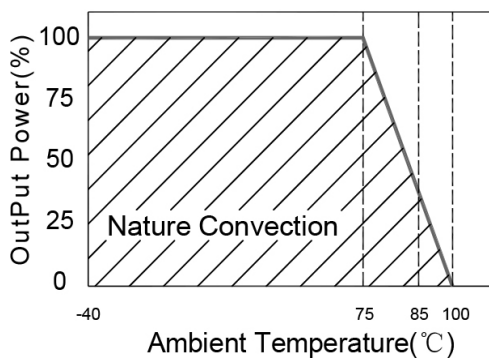
## 10DPW4 Series

10W - Single/Dual Output - Wide Input - Isolated & Regulated DC-DC Converter

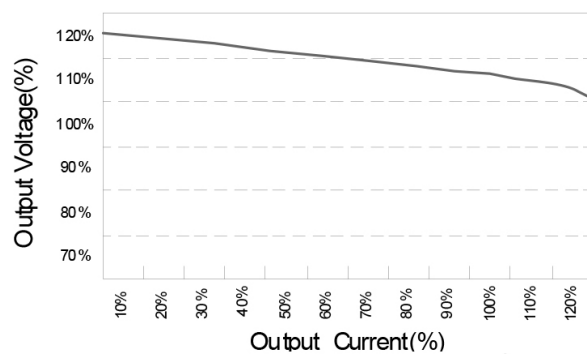
Part Number	Input Voltage [VDC] Range	Input Current [mA]		Output Voltage [VDC]	Output Current [mA]		Efficiency [%, Typ.]
		No load	Full load		Full load	Full load	
10DPW4_2403S1.5	9-36	30	503	3.3	3000	82	
10DPW4_2405S1.5	9-36	30	508	5	2000	82	
10DPW4_2412S1.5	9-36	30	502	12	833	83	
10DPW4_2415S1.5	9-36	30	505	15	670	83	
10DPW4_4803S1.5	18-75	30	252	3.3	3000	82	
10DPW4_4805S1.5	18-75	30	254	5	2000	82	
10DPW4_4812S1.5	18-75	30	251	12	833	83	
10DPW4_4815S1.5	18-75	30	252	15	670	83	
10DPW4_2405D1.5	9-36	30	502	±5	±1000	83	
10DPW4_2412D1.5	9-36	30	506	±12	±420	83	
10DPW4_2415D1.5	9-36	30	512	±15	±340	83	
10DPW4_4805D1.5	18-75	30	251	±5	±1000	83	
10DPW4_4812D1.5	18-75	30	253	±12	±420	83	
10DPW4_4815D1.5	18-75	30	256	±15	±340	83	

## Typical characteristics

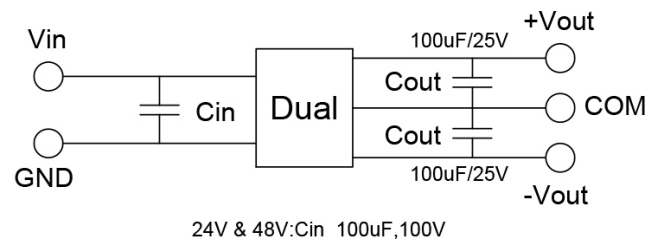
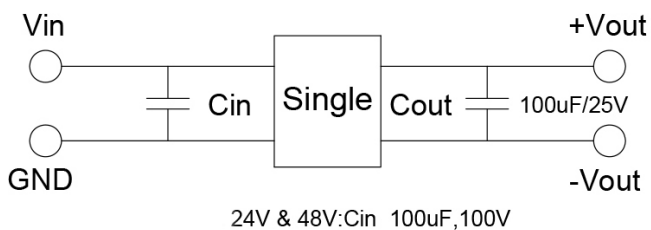
Temperature derating graph



Tolerance envelope graph



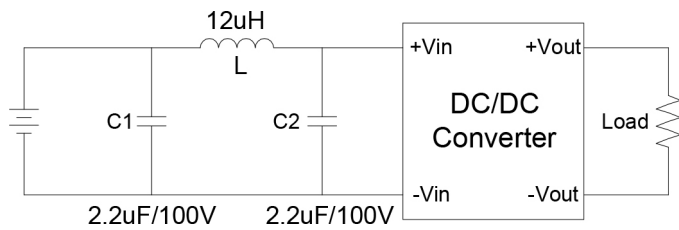
## Recommended test circuit



## 10DPW4 Series

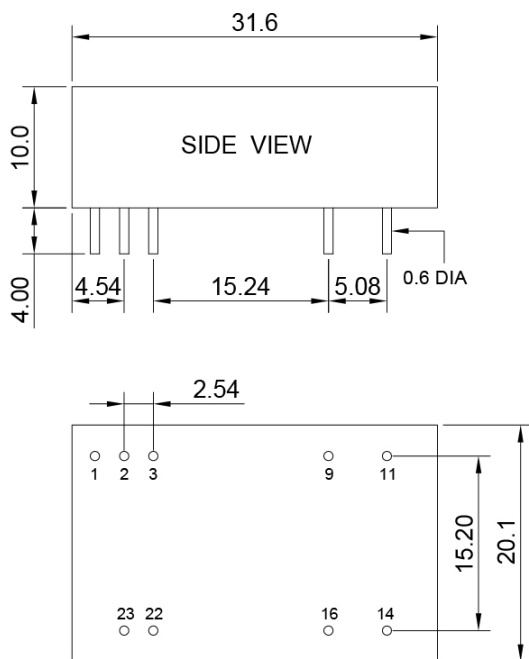
10W - Single/Dual Output - Wide Input - Isolated & Regulated DC-DC Converter

### External filter



Input filter components (C1, C2,L) are used to help meet conducted emissions (EN55022 class A) requirement for the module. These components should be mounted as close as possible to the module; and all leads should be minimized to decrease radiated noise.

### Mechanical dimensions



**Note:**  
 Unit: mm[inch]  
 Tolerances:  $\pm 0.5\text{mm}$  [ $\pm 0.02\text{inch}$ ]  
 Pin size tolerance:  $0.6\phi \pm 0.05\text{mm}$

PIN connection							
PIN	1	2, 3	9	11	14	16	22, 23
Single	Remote on/off	-Vin	NC	NC	+Vout	-Vout	+Vin
Dual	Remote on/off	-Vin	Common	-Vout	+Vout	Common	+Vin