

NOTES: VALID UNLESS OTHERWISE SPECIFIED

1. GENERAL:

- a. APPLICATION SPECIFICATION: AS-31386-200
- b. PRODUCT SPECIFICATION: PS-31387-200
- c. PACKAGING SPECIFICATION: PK-31301-916
- d. PARTS MUST BE IN COMPLIANCE TO MOLEX CHEMICAL SUBSTANCES FOR PRODUCTS AND PACKAGING SPECIFICATION: ES-40000-5016
- e. DATA MUST BE SUBMITTED UNDER THE MOLEX PART NUMBER TO IMDS (COMPANY ID#13255)
- f. DIMENSIONS AND TOLERANCES ARE VALID FOR AS SHIPPED SHROUD ASSEMBLY
- g. REFERENCE GM INTERFACE CONTROL DRAWINGS (ICD)
  - 1. 12582682 (Au)
  - 2. 12642695 (Ag)

2. DESIGN - MATERIALS

- a. PLASTIC: PBT 30% GF - SEE CHART FOR COLOR
- b. SIGNAL PIN PLATING:
  - UNDERPLATE: NICKEL 1.27-2.54  $\mu$ m
  - SELECT GOLD OPTION: 0.76  $\mu$ m MIN.
  - SELECT SILVER OPTION: 1.90-3.30  $\mu$ m MIN
  - SOLDER TAIL SELECT TIN: 5.08-10.16  $\mu$ m BRIGHT FINISH
- c. GROUND PIN PLATING:
  - UNDERPLATE: NICKEL 1.27-2.54  $\mu$ m
  - OVERPLATE: SELECT TIN 2.54-4.06  $\mu$ m, MATTE FINISH

3. DESIGN - GEOMETRY:

- a. THIS IS A 100% CAD GENERATED PART. THE CAD MATHEMATICAL DATA IS THE MASTER FOR ALL NON-DIMENSIONAL FEATURES. DRAWING DIMENSIONS SHALL BE MET WHEN DIFFERENCES EXIST BETWEEN THE DRAWING AND THE CAD MODEL. UNDERLINED DIMENSIONS OR DIMENSIONS INDICATED AS "EDITED" MAY BE DIFFERENT FROM THE 3D MODEL GEOMETRY. FOR DIMENSIONAL OR ANY INFORMATION NOT SHOWN ON THIS DRAWING, ANALYZE THE CAD MODEL.
- b. PRODUCT DESIGN MODEL NUMBER(S): SEE BOM TABLE
- c. GEOMETRIC DIMENSIONS AND TOLERANCES PER ASME Y14.5M-1994
- d. GENERAL TOLERANCES - SEE TABLE

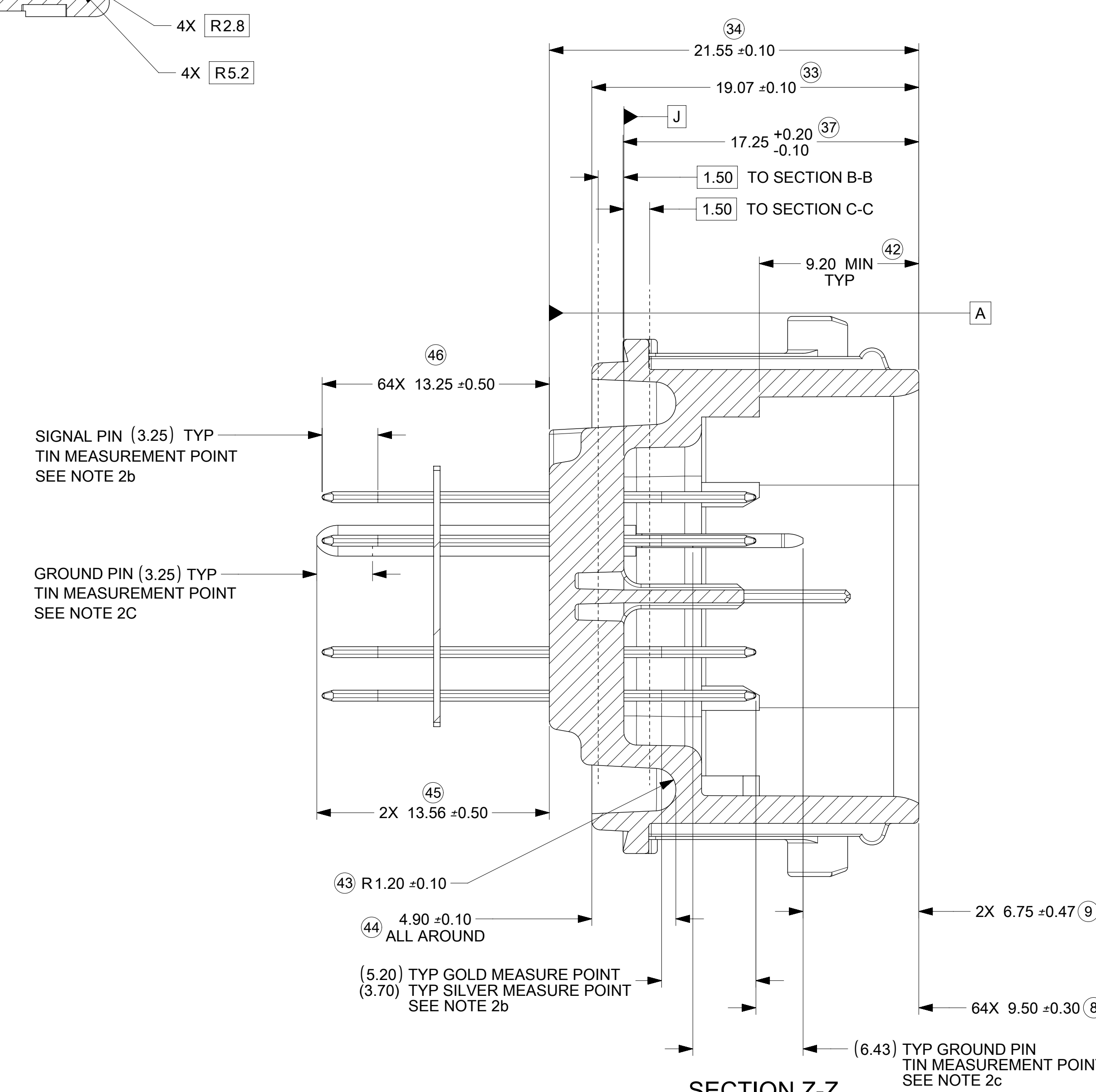
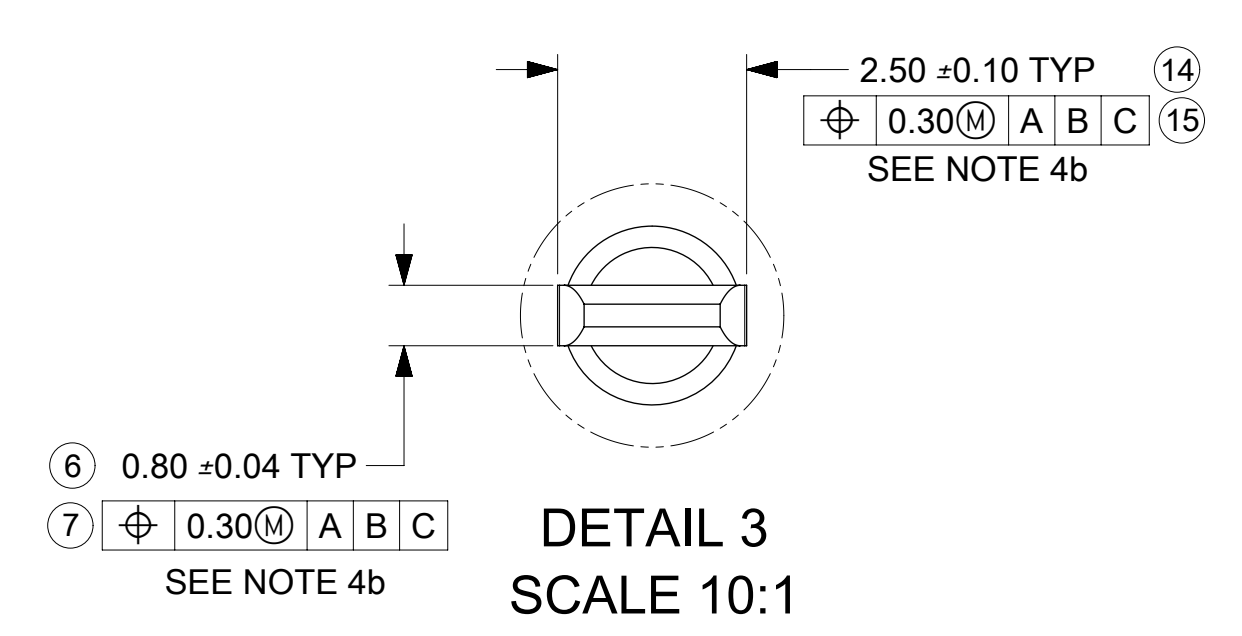
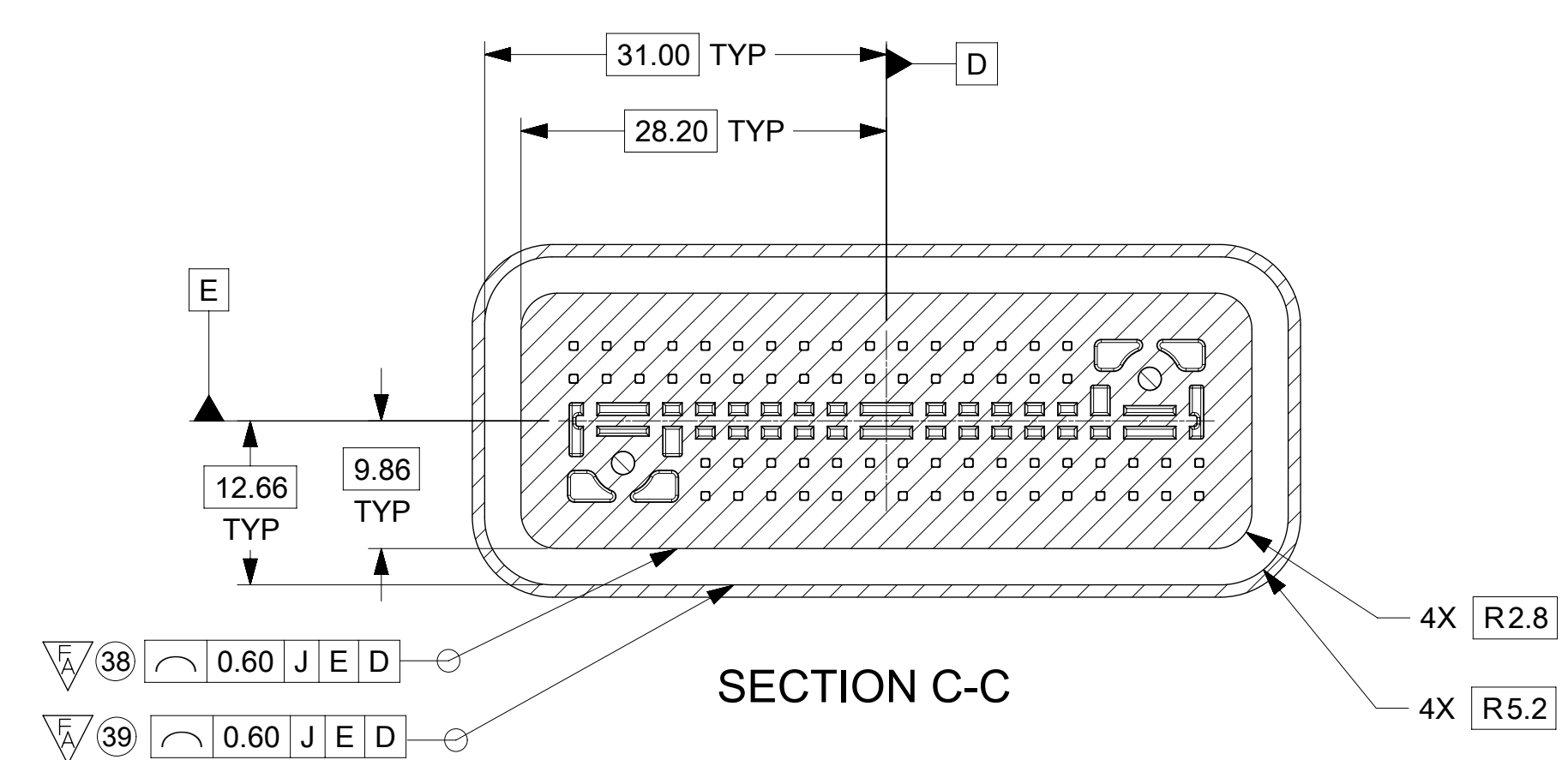
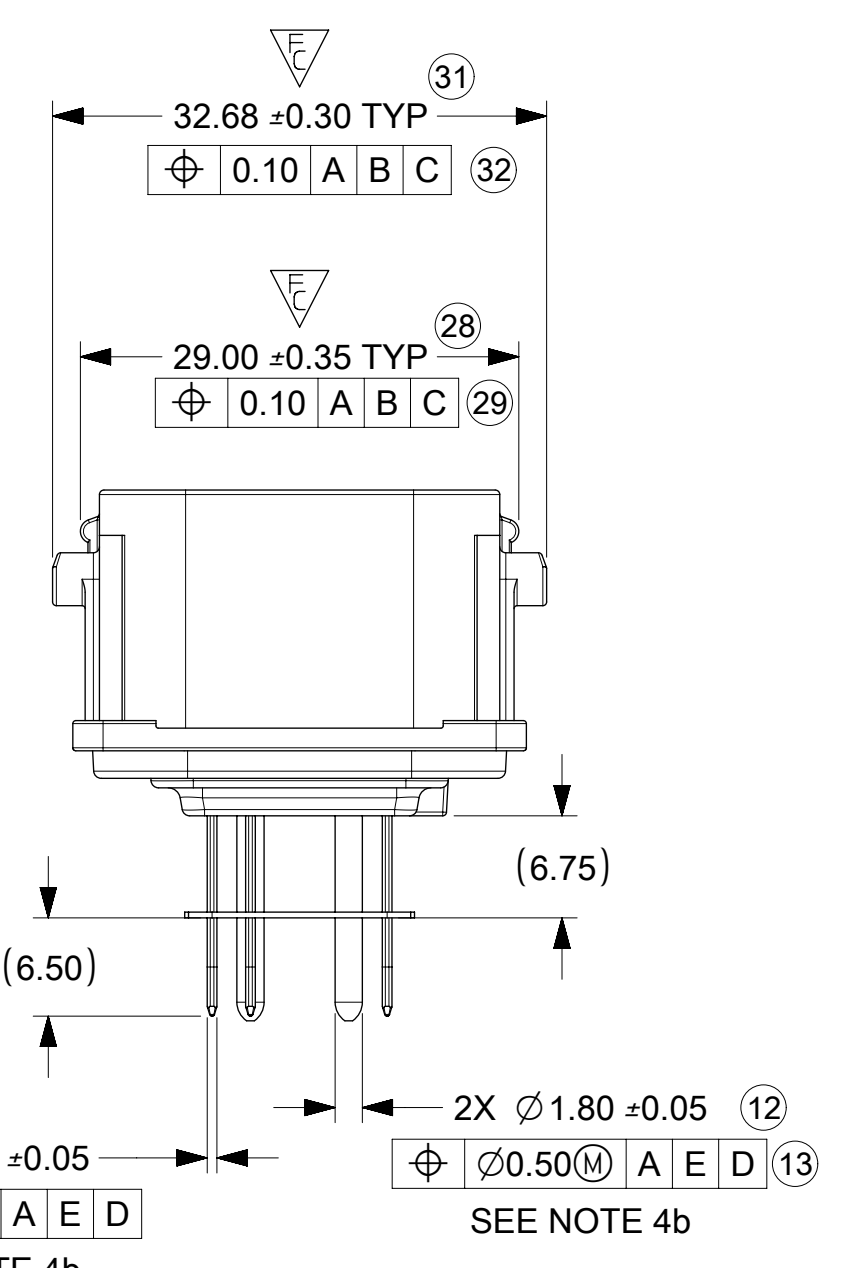
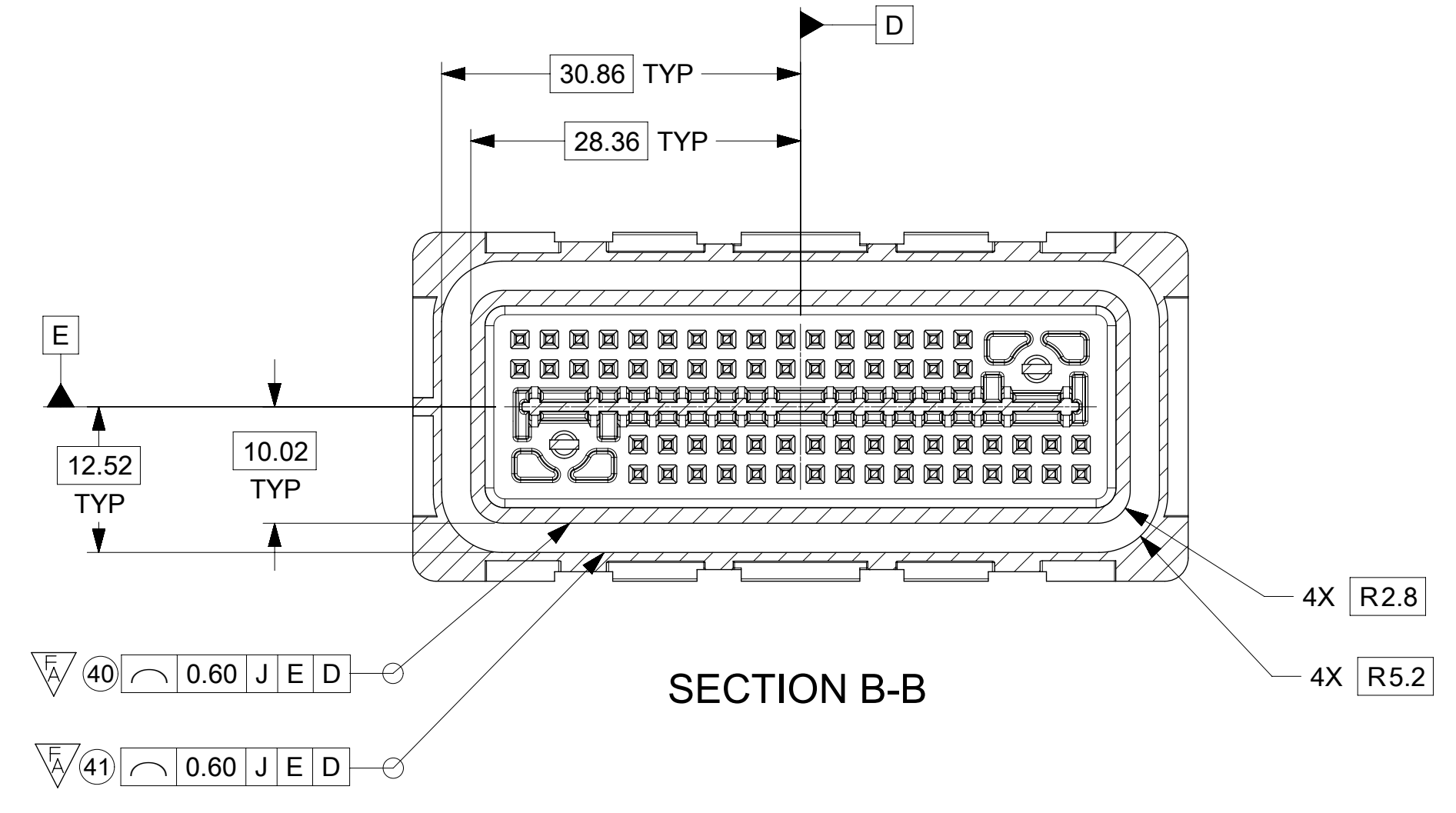
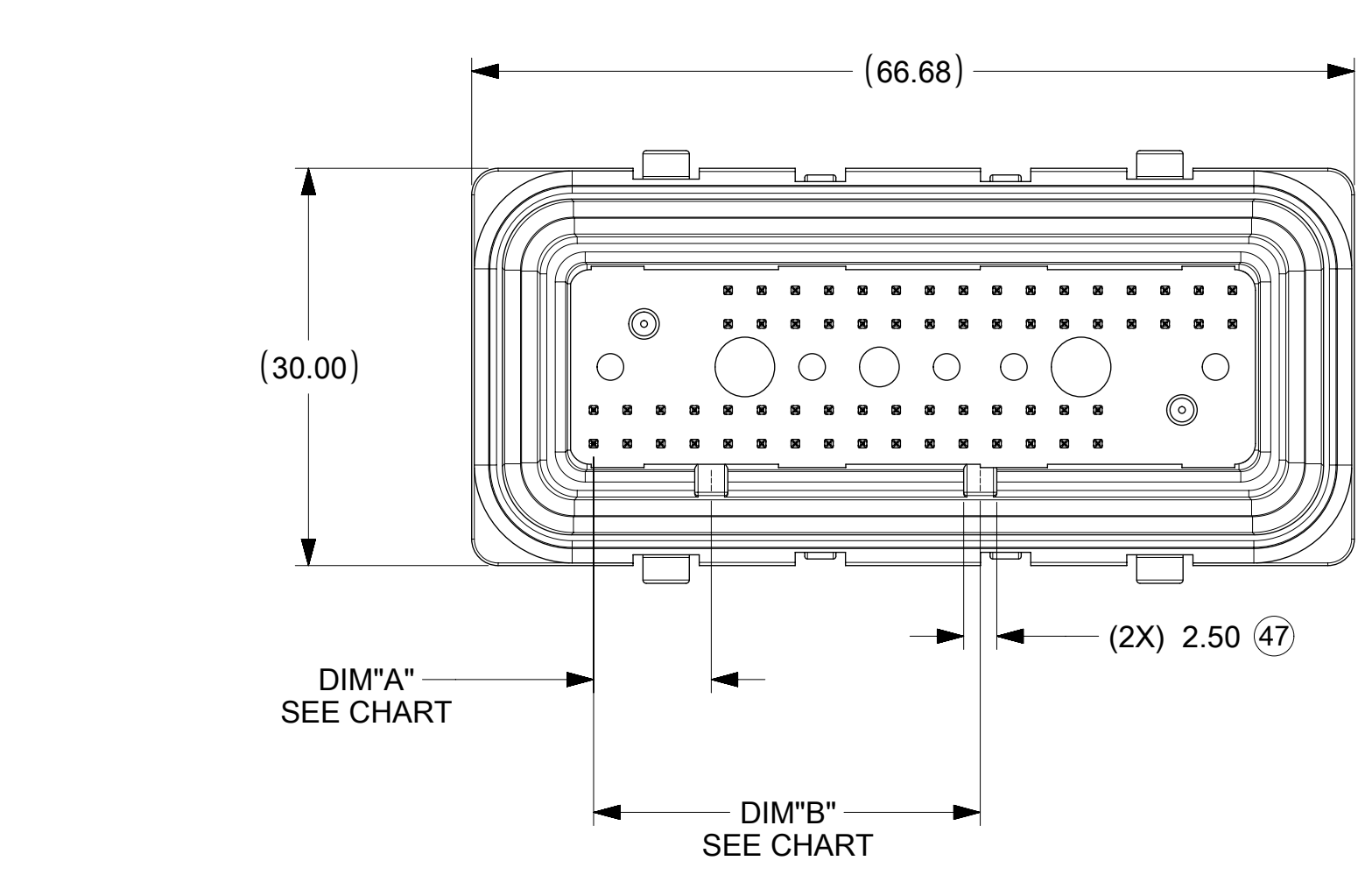
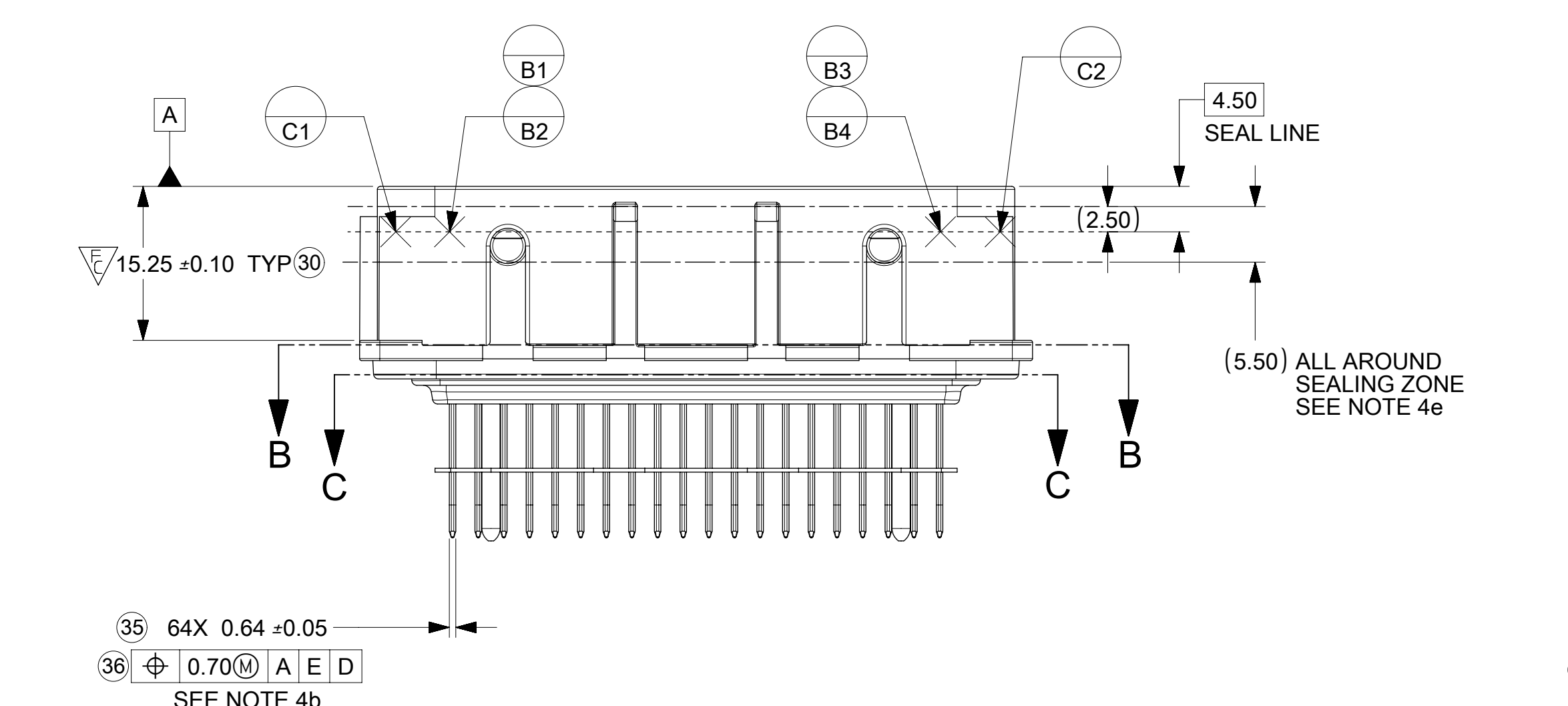
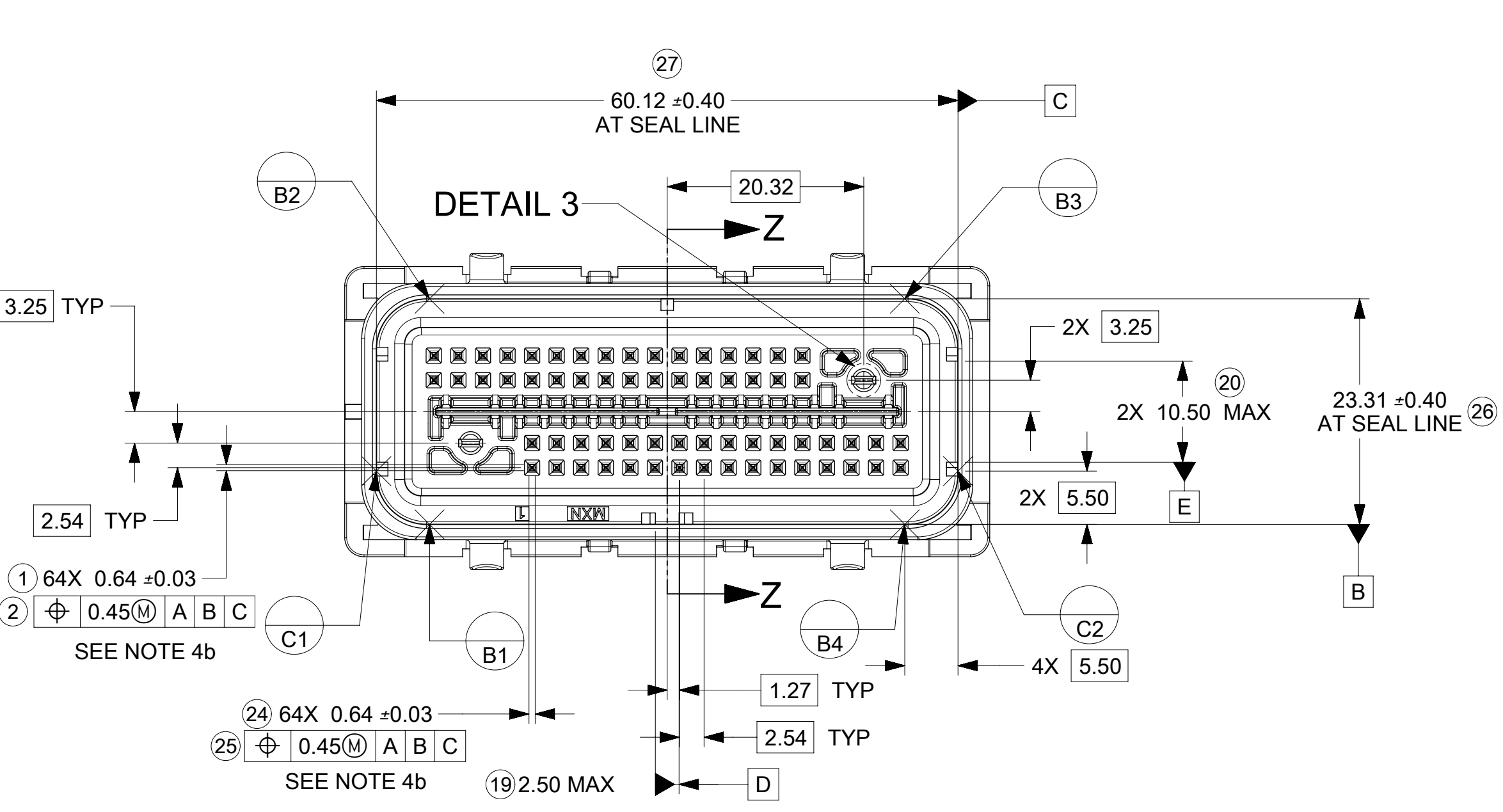
4. DESIGN - MANUFACTURING:

- a. HUMAN READABLE LASER MARKING
  - 1. INFORMATION TO BE PRINTED:
    - DDD - 4 DIGIT JULIAN DATE CODE
    - S\_HH - STITCHER NUMBER\_HOUR NUMBER (24 HOUR CLOCK)
    - MMMM - LAST FOUR DIGITS OF MOLEX MATERIAL NUMBER
  - 2. SIZE: HUMAN LEGIBLE
- b. PIN MATE SIDE AND PCB SIDE TRUE POSITION TO BE VERIFIED ONLINE WITH A GO/NO-GO FUNCTIONAL GAGE.
- c. ANTI-TARNISH FOR Ag PLATING ONLY: SYNTHETIC HYDROCARBON CONTACT SURFACE FINISH OR EQUIVALENT APPLIED WITHOUT VOID TO CONTACT AREA (MIN. 3.7mm FROM PIN TIP).
- d. VISUAL DEFECTS SHALL MEET COSMETIC STANDARD PS-45499-002 (CLASS B).
- e. THERE SHALL BE NO PERMISSIBLE DEFECTS THAT COULD POTENTIALLY PROHIBIT THE FUNCTIONALITY WITHIN THE SEALING SURFACE/ZONE SUCH AS PARTING LINES, MISMATCHES, SINK, TEXTURE VARIATIONS, SCRATCHES/GOUGES, SHORT FILL, PROTRUSIONS, PITS, DENTS/NICKS, BLISTERS OR EJECTOR MARKS.

A10	UPDATED PCN 505530 FOR MINOR DRAFT AND RADII
A9	NX REMASTERING
A8	UPDATE STATUS TO SALEABLE
A7	UPDATED NOTE 1c SAP# 10595870
A6	ADDED NOTE 4d, e & SEALING ZONE ON PG 2 SAP# 10586362
A5	MODIFIED HIGH RETENTION CAVITY FOR 2.8 GROUND PIN SAP# 10584227
A4	ADDED BALLOONS 1,2,6-15,19,20,24-47 REMOVED BALLOONS 3-5,17,18,21-23 EDITED ALL NOTES, STATUS & MATING HARNESS PART NUMBER SAP# 10580347
REV	DESCRIPTION

INSPECTION BALLOON NUMBER LOG	
PER DRAWING REVISION: A6	
LAST BALLOON NUMBER: 47	
ADDED BALLOON NUMBER: 1 2 6 7 8 9 10 11 12 13 14 15 19 20 24 25 26 27 28 29 30 31 32 33 34 35 36 37 38 39 40 41 42 43 44 45 46 47	
DELETED INSPECTION BALLOON NUMBER: 3 4 5 16 17 18 21 22 23	

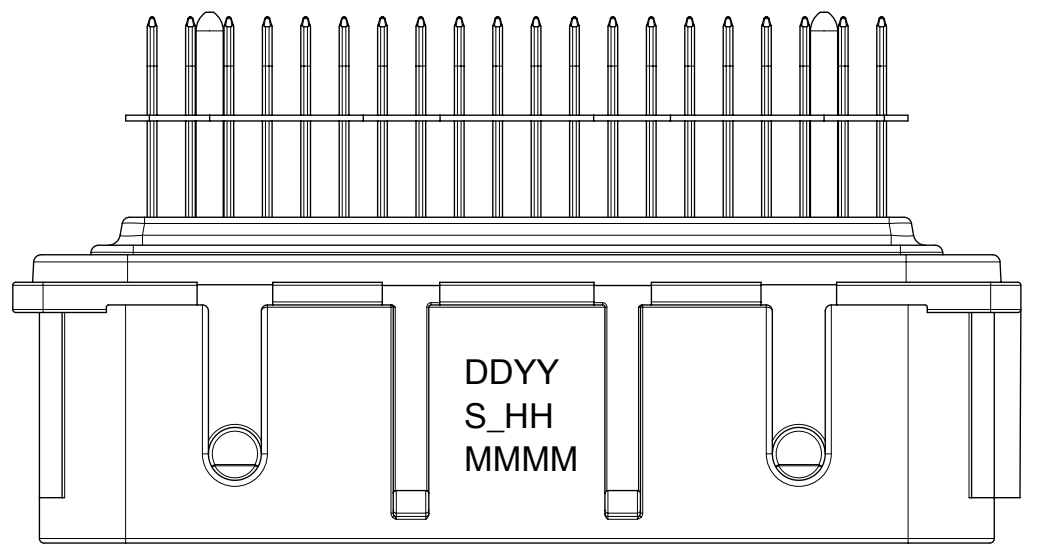
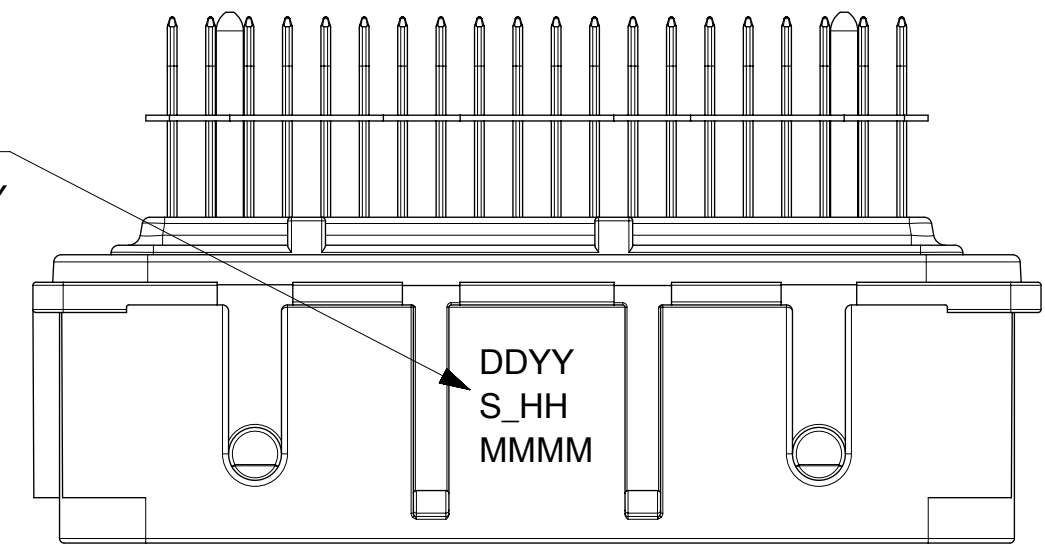
QUALITY SYMBOLS	THIS DRAWING CONTAINS INFORMATION THAT IS PROPRIETARY TO MOLEX ELECTRONIC TECHNOLOGIES, LLC AND SHOULD NOT BE USED WITHOUT WRITTEN PERMISSION														
	EC NO: 606583 DRWN: BSKANTHARAJU CHKD: DKRAWCZYK REV APPR: DKRAWCZYK	GENERAL TOLERANCES (UNLESS SPECIFIED)	DIMENSION UNITS	SCALE											
		4 PLACES $\pm$	MM	2:1											
		3 PLACES $\pm$	DRWN BY	DATE											
		2 PLACES $\pm$ 0.13	ANGULAR TOL $\pm$ 3.0 °	HKASSAB	2011/02/09	66 CKT SHROUD ASSY GENERAL MAKRET									
		1 PLACE $\pm$ 0.25	0 PLACES $\pm$	CHKD BY	DATE										
		0 PLACES $\pm$	DRAFT WHERE APPLICABLE MUST REMAIN WITHIN DIMENSIONS	APPR BY	DATE										
				RBAUMAN	2011/02/16	SERIES	MATERIAL NUMBER	CUSTOMER	PRODUCT CUSTOMER DRAWING						
						31387	SEE CHART	GENERAL MARKET							
				D		DOCUMENT NUMBER	DOC TYPE	DOC PART	SHEET NUMBER	1 OF 3					
						SD-31387-066	PSD	000							



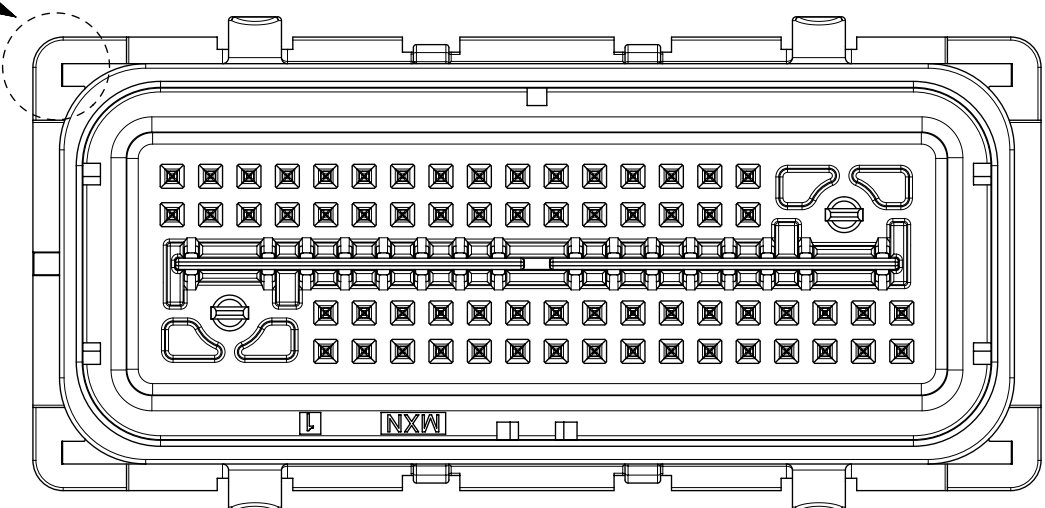
QUALITY SYMBOLS	THIS DRAWING CONTAINS INFORMATION THAT IS PROPRIETARY TO MOLEX ELECTRONIC TECHNOLOGIES, LLC AND SHOULD NOT BE USED WITHOUT WRITTEN PERMISSION			
	4 = 4 3 = 3 0 = 0 0 = 0 0 = 0 0 = 0 0 = 0	EC NO: 606583 DRWN: BSKANTHARAJU CHKD: DKRAWCZYK REV APPR: DKRAWCZYK	2018/10/16 2018/12/10 2018/12/10	GENERAL TOLERANCES (UNLESS SPECIFIED) ANGULAR TOL ± 3.0 ° 4 PLACES ± 3 PLACES ± 2 PLACES ± 0.13 1 PLACE ± 0.25 0 PLACES ± DRAFT WHERE APPLICABLE MUST REMAIN WITHIN DIMENSIONS
PRODUCT CUSTOMER DRAWING 66 CKT SHROUD ASSY GENERAL MAKRET		SERIES: 31387 MATERIAL NUMBER: SEE CHART CUSTOMER: GENERAL MARKET	DOCUMENT NUMBER: SD-31387-066 DOC TYPE: PSD DOC PART: 000 SHEET NUMBER: 2 OF 3	

SHROUD ASSEMBLY NUMBER	MATE SIDE PIN FINISH	COLOR	HARNESS SIDE KEY CODE	PCB SIDE KEY LOCATION		MATING HARNESS PART NUMBER (OPT 0, OPT 9)	STATUS
				DIM. "A" ±0.30	DIM. "B" ±0.30		
31387-8001	GOLD	BLACK	A	8.89	29.21	348220013 348220023	SALEABLE
31387-8003	GOLD	BLUE	C	8.89	34.29	348220033 348220043	SALEABLE
31387-8004	SILVER	BLACK	A	8.89	29.21	348220013 348220023	SALEABLE
31387-8006	SILVER	BLUE	C	8.89	34.29	348220033 348220043	SALEABLE

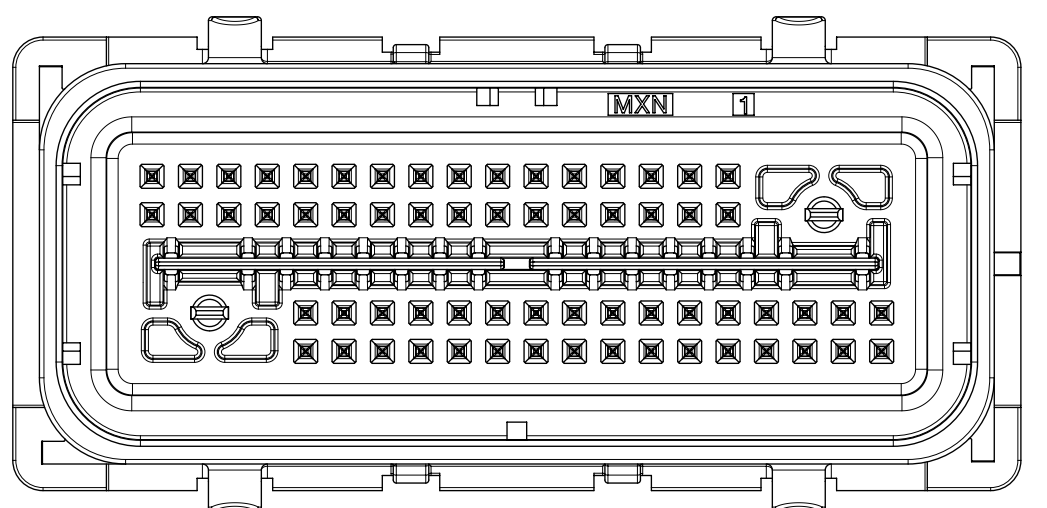
SHROUD ASSEMBLY  
TRACEABILITY INFORMATION  
FOR MOLEX INTERNAL USE ONLY  
(SEE NOTE 4a)



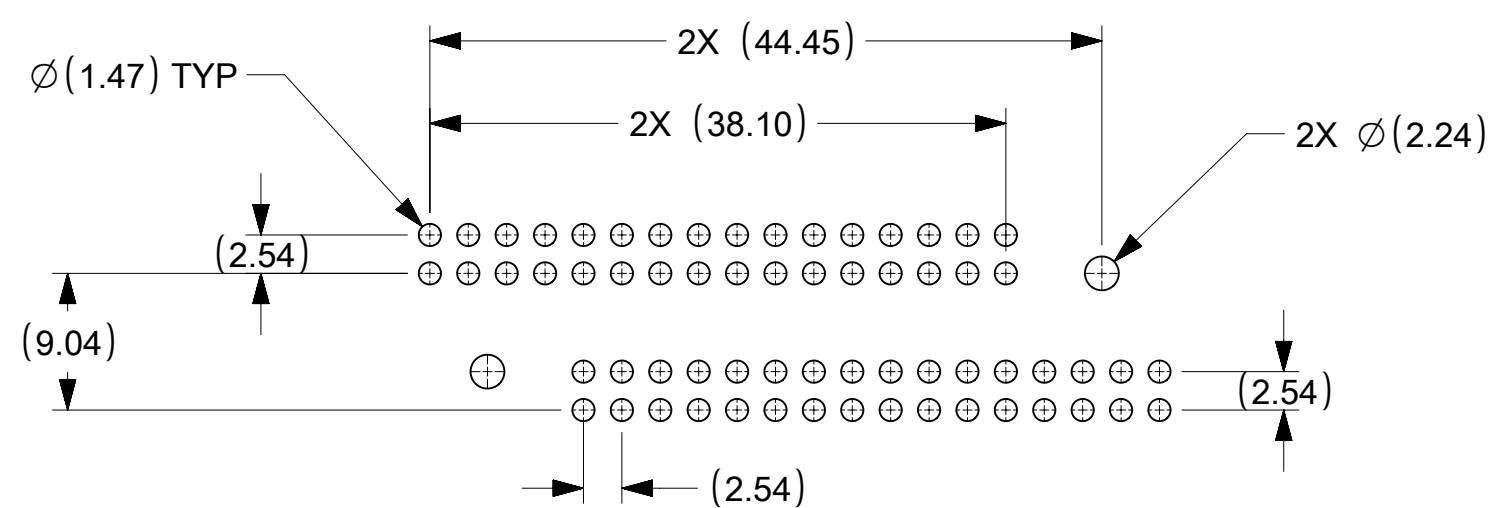
MATE SIDE  
POLARIZATION KEY  
AT CORNERS



KEY OPTION "A"

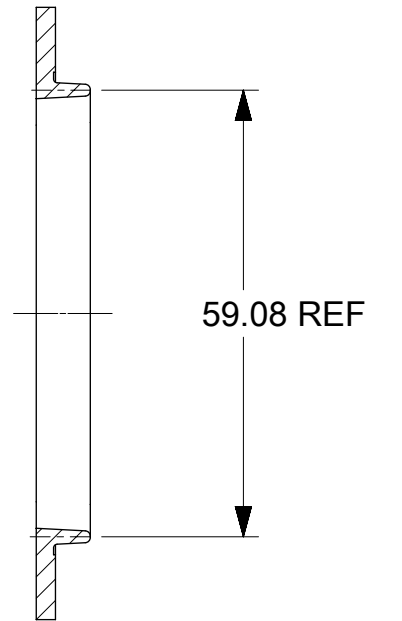
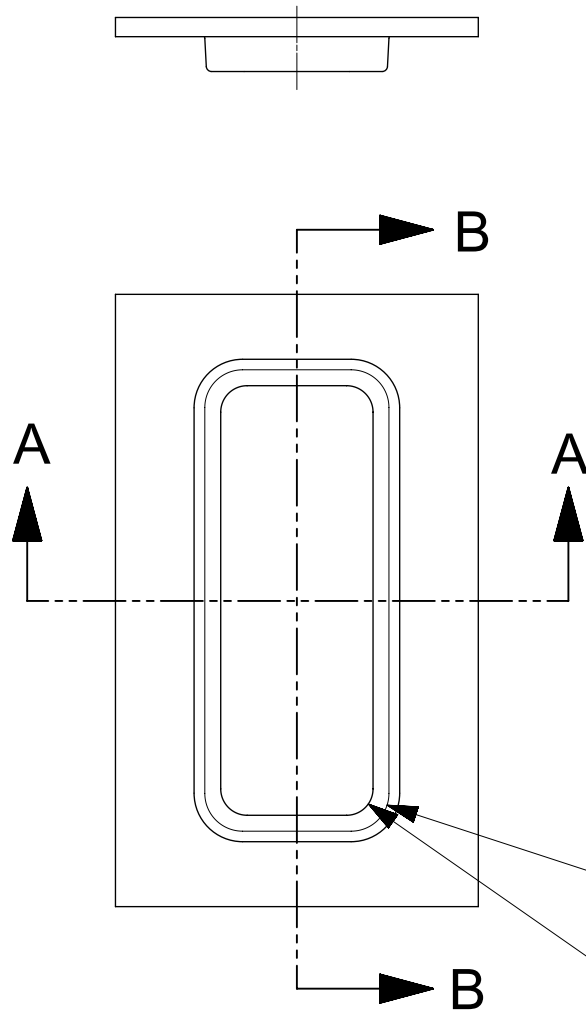
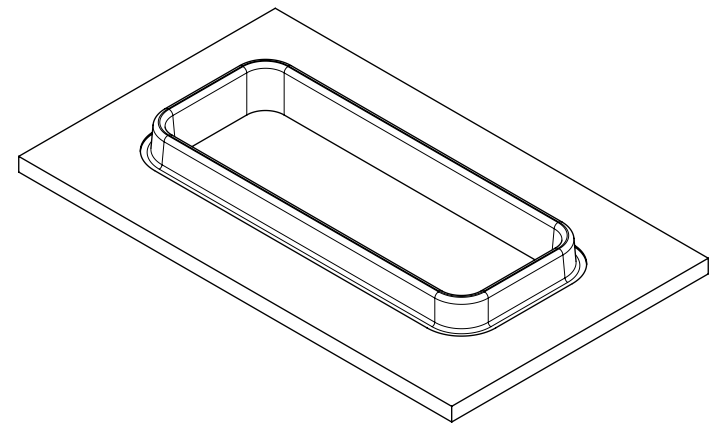


KEY OPTION "C"

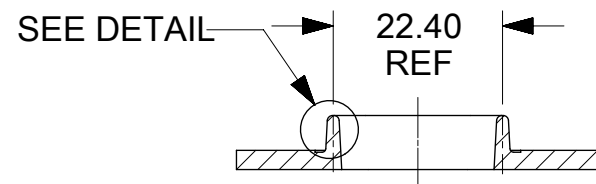


PCB LAYOUT FOR REFERENCE ONLY

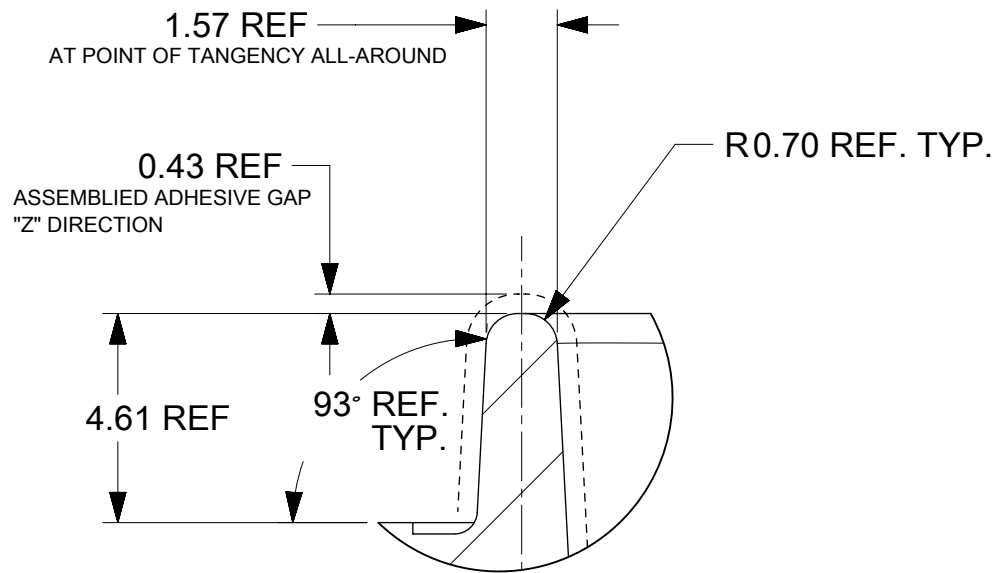
<b>QUALITY SYMBOLS</b> 	THIS DRAWING CONTAINS INFORMATION THAT IS PROPRIETARY TO MOLEX ELECTRONIC TECHNOLOGIES, LLC AND SHOULD NOT BE USED WITHOUT WRITTEN PERMISSION											
	EC NO: 606583	DRWN: BSKANTHARAJU	CHKD: DKRAVCZYK	REV: APPR: DKRAVCZYK	2018/10/16	2018/12/10	2018/12/10	GENERAL TOLERANCES (UNLESS SPECIFIED)		DIMENSION UNITS: MM	SCALE: 2:1	
	ANGULAR TOL ± 3.0 ° 4 PLACES ± 3 PLACES ± 2 PLACES ± 0.13 1 PLACE ± 0.25 0 PLACES ±							DRWN BY: HKASSAB DATE: 2011/02/09		 66 CKT SHROUD ASSY GENERAL MAKRET		
	DRAFT WHERE APPLICABLE MUST REMAIN WITHIN DIMENSIONS							CHKD BY: _____ DATE: _____				
	APPR BY: RBAUMAN DATE: 2011/02/16							PRODUCT CUSTOMER DRAWING		SERIES: 31387	MATERIAL NUMBER: SEE CHART	CUSTOMER: GENERAL MARKET
	DRAWING SIZE: D THIRD ANGLE PROJECTION							DOCUMENT NUMBER: SD-31387-066 DOC TYPE: PSD DOC PART: 000 SHEET NUMBER: 3 OF 3				
	RELEASE STATUS		RELEASE DATE									



SECTION B-B



SECTION A-A



SCALE 6:1

THIS DRAWING CONTAINS INFORMATION THAT IS PROPRIETARY TO MOLEX ELECTRONIC TECHNOLOGIES, LLC AND SHOULD NOT BE USED WITHOUT WRITTEN PERMISSION											
QUALITY SYMBOLS ▽ = 0 ▽ = 0 ▽ = 0 ▼ = 0 ▽ = 0 ⊠ = 0 ■ = 0 ▽ = 0	EC NO: 121890 DRWN: BSKANTHARAJU CHKD: APPR: DKRAWCZYK	2017/03/28 2017/10/12	GENERAL TOLERANCES (UNLESS SPECIFIED)		DIMENSION UNITS	SCALE					
			ANGULAR TOL ± °		MM	1:1					
			4 PLACES ±	DRWN BY	DATE						
			3 PLACES ±	3 PLACES ±	FJAKLIC	11/21/2008	LARGE FOOTPRINT ADHESIVE TONGUE GEOMETRY				
			2 PLACES ±	2 PLACES ±	CHK'D BY	DATE					
			1 PLACE ±	1 PLACE ±	GPRATT	11/21/2008					
0 PLACES ±	0 PLACES ±	APPR BY	DATE	PRODUCT CUSTOMER DRAWING							
DRAFT WHERE APPLICABLE MUST REMAIN WITHIN DIMENSIONS		DKRAWCZYK	2013/02/19								
DRAFT WHERE APPLICABLE MUST REMAIN WITHIN DIMENSIONS		DRAWING SIZE	THIRD ANGLE PROJECTION								
		B1	B	B				SERIES: 31387 MATERIAL NUMBER:		CUSTOMER: GENERAL MARKET	
RELEASE STATUS		RELEASE DATE		DOCUMENT NUMBER		DOC TYPE		DOC PART		SHEET NUMBER	
				SD-31387-173		PSD		000		1 OF 1	