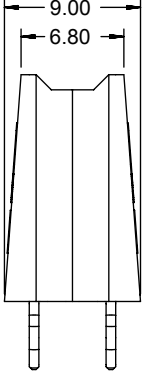
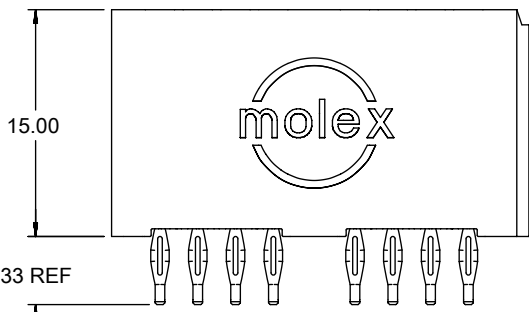
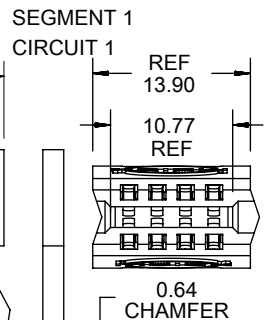
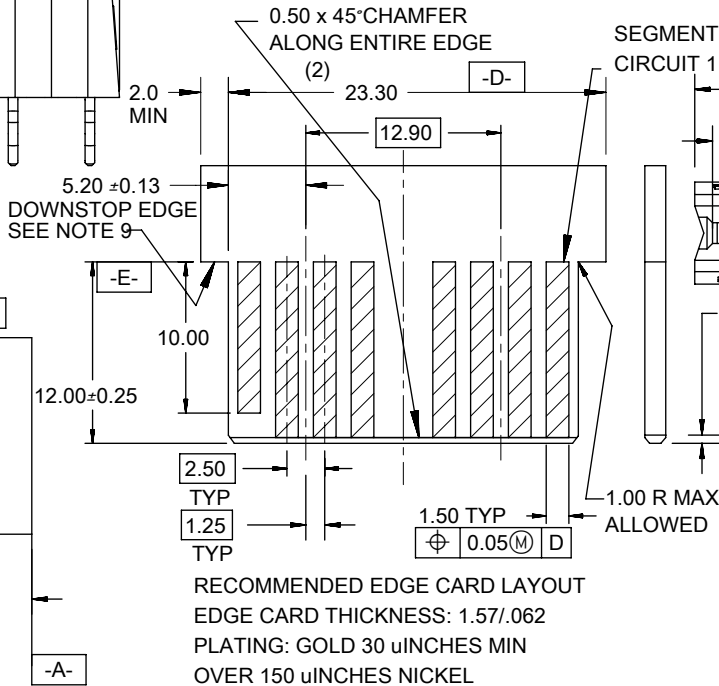
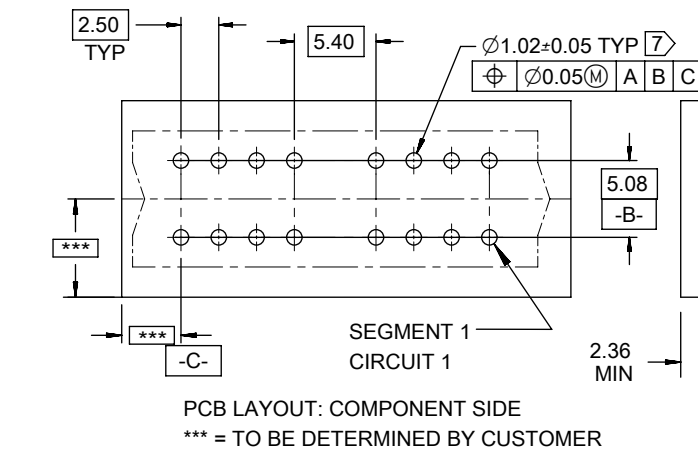


CIRCUIT 8  
SEE CHART FOR  
OPTIONAL VOID  
LOCATIONS

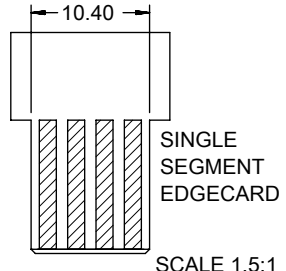
SEGMENT 1  
CIRCUIT 1



- NOTES:
- MATERIAL: HOUSING 30% GF LCP, UL94V-0, BLACK  
MATERIAL: TERMINAL C5210 ALLOY
  - FINISH: SELECT GOLD 30 μ IN MIN IN CONTACT AREA  
100 μ IN MIN IN PC TAIL AREA  
BOTH OVER NICKEL 50 μ IN OVERALL
  - PRODUCT SPECIFICATION: PS-45719-001.
  - PACKAGING SPECIFICATION: ES-45714-001.
  - DIMENSIONS GIVEN ACROSS CENTERLINES ARE SYMMETRICAL ABOUT THOSE CENTERLINES WITHIN HALF THE TOTAL TOLERANCE.
  - PCB THICKNESS: 2.36 MIN  
EDGE CARD THICKNESS: 1.57±0.08
  - PCB HOLE SPECIFICATION: SEE PS-45719-001.
  - THIS PART IS RoHS COMPLIANT. SEE ES-45482-999 FOR LABEL REQUIREMENTS.
  - THIS EDGE TOUCHES HOUSING WHEN EDGE CARD IS FULLY SEATED



SINGLE  
SEGMENT  
MODULE  
45845-1000  
SCALE 1.5:1



TOOLING STATUS	MATERIAL NUMBER	SEG MENTS	FINISH (SHT 2)	VOID LOCATIONS
TOOLED	45845-1000	1	1	NONE
TOOLED	45845-0001	2	1	NONE
TOOLED	45845-0002	3	1	NONE
TOOLED	45845-0003	4	1	NONE
TOOLED	45845-1001	2	1	SEG 1 CKT 4, 8
TOOLED	45845-1003	3	1	SEGS 1, 2 CKTS 3,7,12,16
TOOLED	45845-3001	2	1	SEG 1 CKTS 3,4,7,8

THIS DRAWING CONTAINS INFORMATION THAT IS PROPRIETARY TO MOLEX ELECTRONIC TECHNOLOGIES, LLC AND SHOULD NOT BE USED WITHOUT WRITTEN PERMISSION

DIMENSION UNITS	SCALE	CURRENT REV DESC: SLOT TOLE. UPDATE	
MM	2:1		
GENERAL TOLERANCES (UNLESS SPECIFIED)		EC NO: 611749	
	MM	INCH	DRWN: PKH 2019/03/01
4 PLACES	±	±	CHK'D: MBELLE 2019/06/04
3 PLACES	±	±	APPR: HTHYAGARAJ 2019/06/14
2 PLACES	±	0.25	±
1 PLACE	±	±	INITIAL REVISION:
0 PLACES	±	±	DRWN: MARGULIS 2004/08/05
ANGULAR TOL	±	0.5°	APPR: MARGULIS 2004/08/05
DRAFT WHERE APPLICABLE MUST REMAIN WITHIN DIMENSIONS		THIRD ANGLE PROJECTION	DRAWING
			A-SIZE
		SERIES	45845

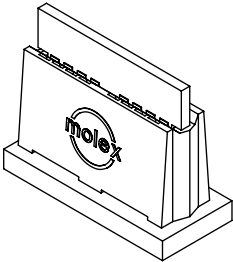
**molex**

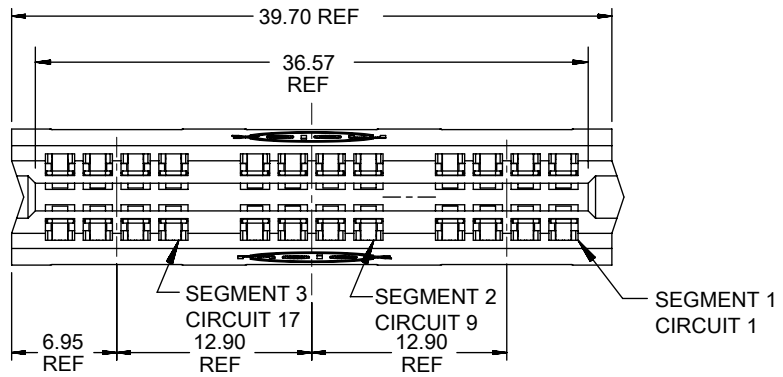
POWER EDGE ASSEMBLY  
SIGNAL VERTICAL CPI

PRODUCT CUSTOMER DRAWING

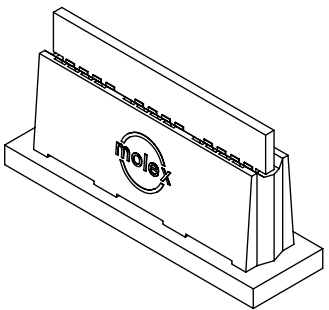
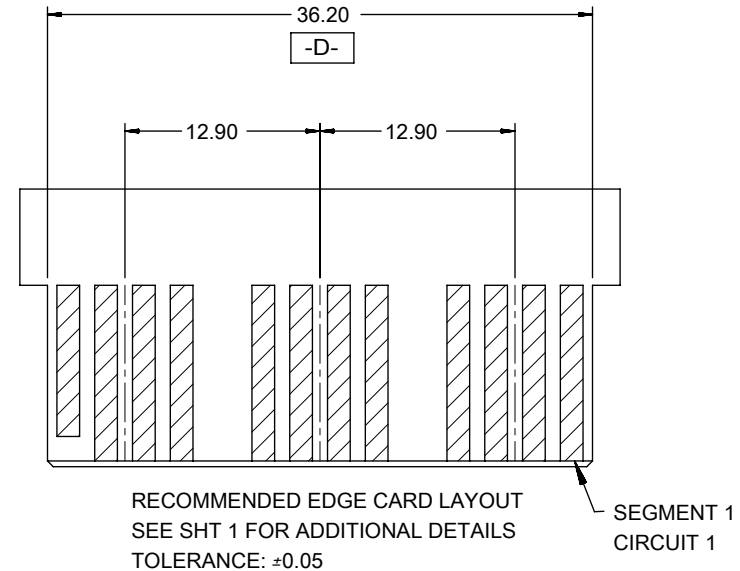
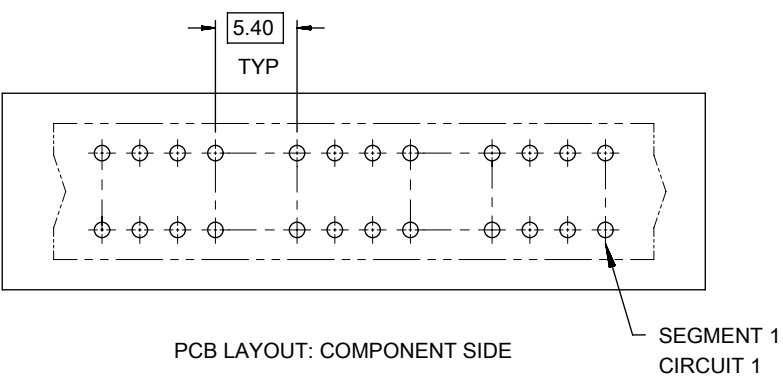
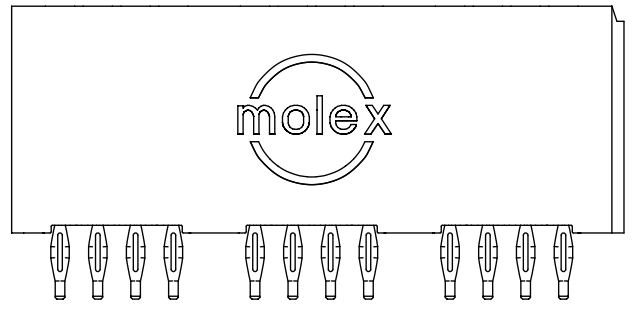
DOCUMENT NUMBER	DOC TYPE	DOC PART	REVISION
SD-45845-001	PSD	001	N

DOCUMENT STATUS	P1	RELEASE DATE	2019/06/14	00:11:01
-----------------	----	--------------	------------	----------





NOTES  
1. FOR NOTES AND DIMENSIONS NOT SHOWN SEE SHEET 1



THIS DRAWING CONTAINS INFORMATION THAT IS PROPRIETARY TO MOLEX ELECTRONIC TECHNOLOGIES, LLC AND SHOULD NOT BE USED WITHOUT WRITTEN PERMISSION

DIMENSION UNITS	SCALE	CURRENT REV DESC: SLOT TOLE. UPDATE	
MM	2:1		
GENERAL TOLERANCES (UNLESS SPECIFIED)		EC NO: 611749	
	MM	INCH	
4 PLACES	±	±	DRWN: PKH 2019/03/01
3 PLACES	±	±	CHK'D: MBELLE 2019/06/04
2 PLACES	±	0.25	APPR: HTHYAGARAJ 2019/06/14
1 PLACE	±	±	INITIAL REVISION:
0 PLACES	±	±	DRWN: MARGULIS 2004/08/05
ANGULAR TOL ± 0.5°		APPR: MARGULIS 2004/08/05	

**molex**

POWER EDGE ASSEMBLY  
SIGNAL VERTICAL CPI

PRODUCT CUSTOMER DRAWING

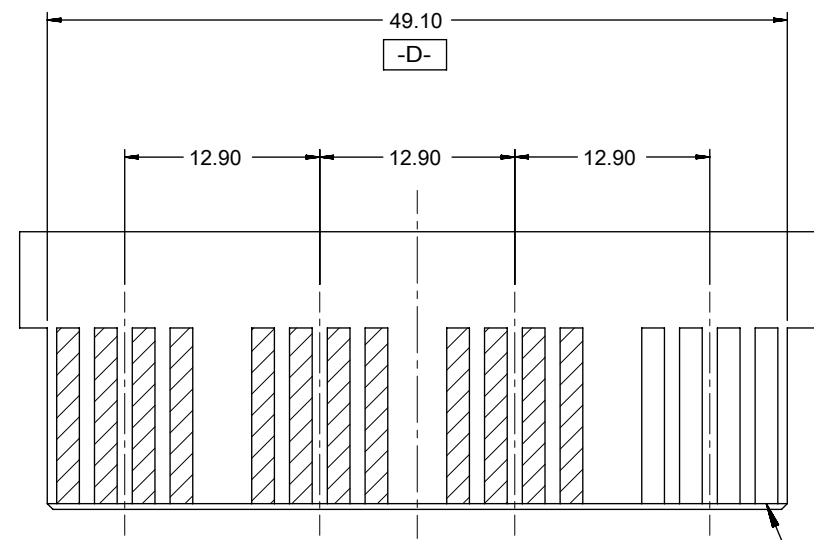
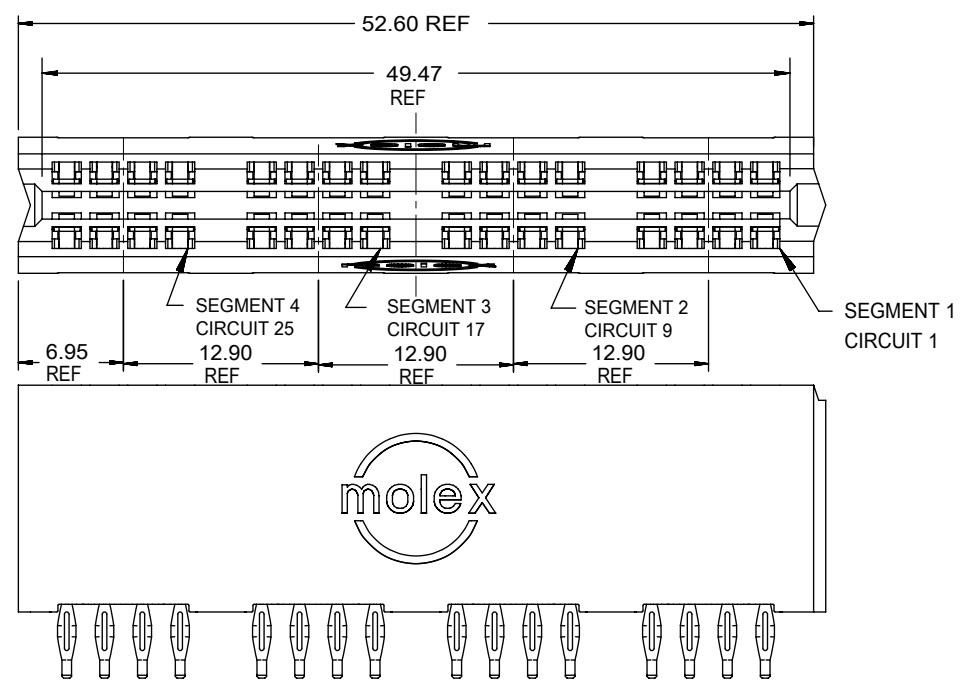
DOCUMENT NUMBER	DOC TYPE	DOC PART	REVISION
SD-45845-001	PSD	001	N

DOCUMENT STATUS	P1	RELEASE DATE	2019/06/14	00:11:01
-----------------	----	--------------	------------	----------

DRAFT WHERE APPLICABLE MUST REMAIN WITHIN DIMENSIONS	THIRD ANGLE PROJECTION	DRAWING	SERIES	MATERIAL NUMBER	CUSTOMER	SHEET NUMBER
		A-SIZE	45845	SEE CHART	GENERAL MARKET	2 OF 3

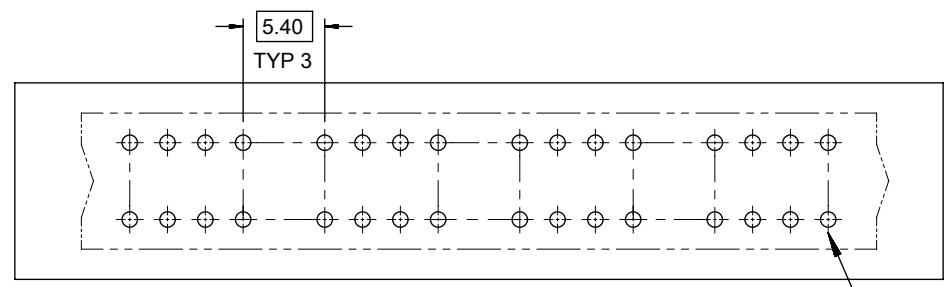
FORMAT: Englega-master-4b-prod-A  
REVISION: D  
DATE: 2018/01/18

NOTE  
FOR ALL OTHER DIMENSIONS AND NOTES SEE SHEET 1.



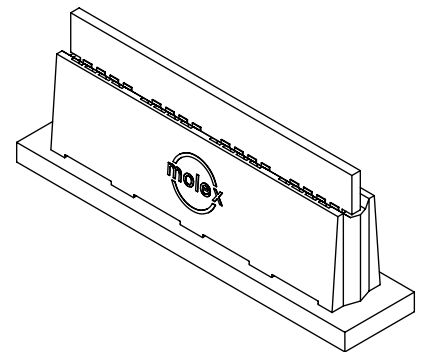
RECOMMENDED EDGE CARD LAYOUT  
SEE SHT 1 FOR ADDITIONAL DETAIL  
TOLERANCE: ±0.05

SEGMENT 1  
CIRCUIT 1



PCB LAYOUT: COMPONENT SIDE

SEGMENT 1  
CIRCUIT 1



THIS DRAWING CONTAINS INFORMATION THAT IS PROPRIETARY TO MOLEX ELECTRONIC TECHNOLOGIES, LLC AND SHOULD NOT BE USED WITHOUT WRITTEN PERMISSION

DIMENSION UNITS	SCALE	
MM	2:1	
GENERAL TOLERANCES (UNLESS SPECIFIED)		
	MM	INCH
4 PLACES	±	±
3 PLACES	±	±
2 PLACES	± 0.25	±
1 PLACE	±	±
0 PLACES	±	±
ANGULAR TOL	± 0.5°	
DRAFT WHERE APPLICABLE MUST REMAIN WITHIN DIMENSIONS		

CURRENT REV DESC: SLOT TOLE. UPDATE		
EC NO: 611749		
DRWN: PKH	2019/03/01	
CHK'D: MBELLE	2019/06/04	
APPR: HTHYAGARAJ	2019/06/14	
INITIAL REVISION:		
DRWN: MARGULIS	2004/08/05	
APPR: MARGULIS	2004/08/05	

<b>molex</b>		
POWER EDGE ASSEMBLY SIGNAL VERTICAL CPI		
PRODUCT CUSTOMER DRAWING		
DOCUMENT NUMBER	DOC TYPE	DOC PART
SD-45845-001	PSD	001
REVISION	N	
MATERIAL NUMBER	CUSTOMER	SHEET NUMBER
SEE CHART	GENERAL MARKET	3 OF 3