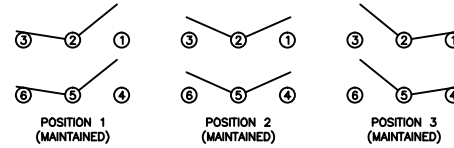


SCHEMATIC



SPECIFICATIONS

FUNCTION:
2P2T ON-OFF-ON

RATINGS:
ANSI/UL 1054 and CN/CSA C22.2 No. 55 (E194579):
20A 125VAC 50/60Hz [cURus]
20A 250VAC 50/60Hz [cURus]
2HP 125/250VAC 50/60Hz [cURus]

EN 61058-1:2002 (50153550):
18(12)A 250V~ 50Hz 5E4 T85/55 [TUV]

CONTACT RESISTANCE:
Initial: 50mΩ Max.

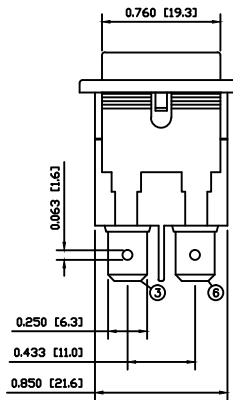
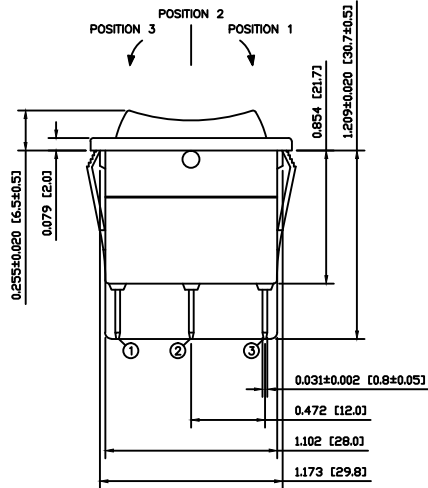
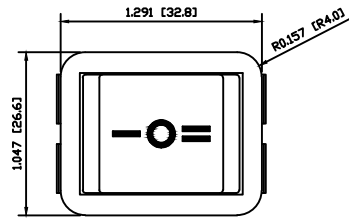
INSULATION RESISTANCE:
500MΩ Min. at 500VDC

DIELECTRIC STRENGTH:
1,500VAC For 1 Minute

TEMPERATURE:
Operating: -20°C to 85°C [cURus]
Operating: -20°C to 85°C [TUV]

INGRESS PROTECTION:
IP55

APPROVALS:
ULus CE RoHS COMPLIANT



COLORS AND MARKINGS

BODY:
Black

ACTUATOR:
Black

MOUNTING EARS:
White

MARKINGS:
1/0/11 Vertical (S)

MARKING COLOR:
White

MATERIALS

BODY:
Polyamide 6/6 (PA66), UL94 V-0

ACTUATOR:
Polyamide 6/6 (PA66), UL94 V-2

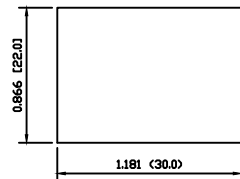
MOUNTING EARS:
Polyamide 6/6 (PA66), UL94 V-2

CONTACTS:
Silver Alloy

TERMINALS:
Silver Plated Copper

RUBBER SEAL:
Ethylene Propylene Thermoplastic Rubber (EPTR)

SUGGESTED PANEL CUTOUT



ACTUATOR	A	06/07/21	CAB
BODY	A	06/07/21	CAB
COLORS	A	06/07/21	CAB
MATERIALS	B	10/12/10	CAB
SPECIFICATIONS	A	06/07/21	CAB
REFERENCE	REV.	DATE	

THE INFORMATION CONTAINED IN THIS DOCUMENT IS PROPRIETARY TO E-SWITCH AND IS NOT TO BE COPIED OR TRANSFERRED

C	UPDATED CONTACT DESIGNATIONS	22189	3/9/16	MR
B	CORRECTED TERMINAL PLATING TO SILVER	19461	10/12/10	CAB
A	INITIAL RELEASE	PCR00051	06/08/05	CAB
REV.	DESCRIPTION	PCR	DATE	DRAWN BY

DIMENSIONS	
INCHES [MILLIMETERS]	
GENERAL TOLERANCES	
±0.008 [±0.2] / ±1*	
SCALE	PROJECTION
DRAWING NOT TO SCALE	⊕

TITLE			
WB246D112S			
ITEM NUMBER	DATE	REVISION	
34-WB246D112S	DECEMBER 10, 2010	c	