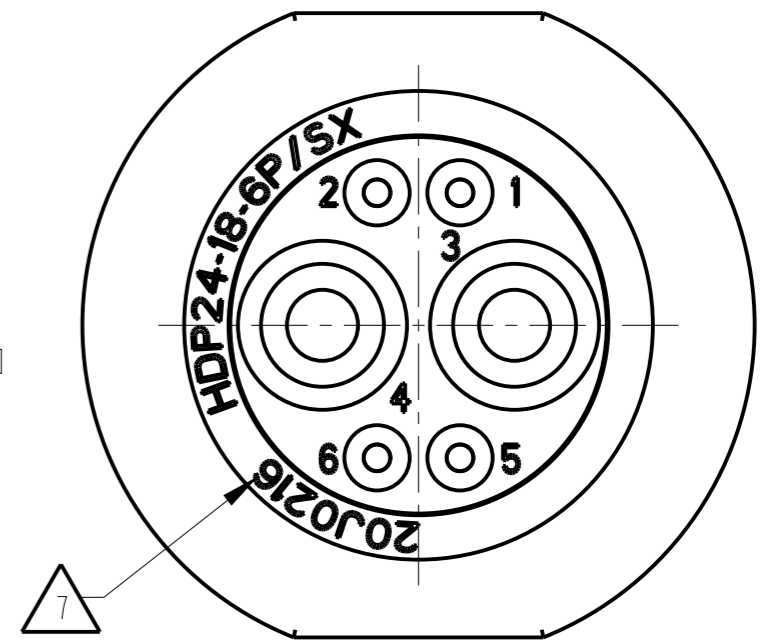
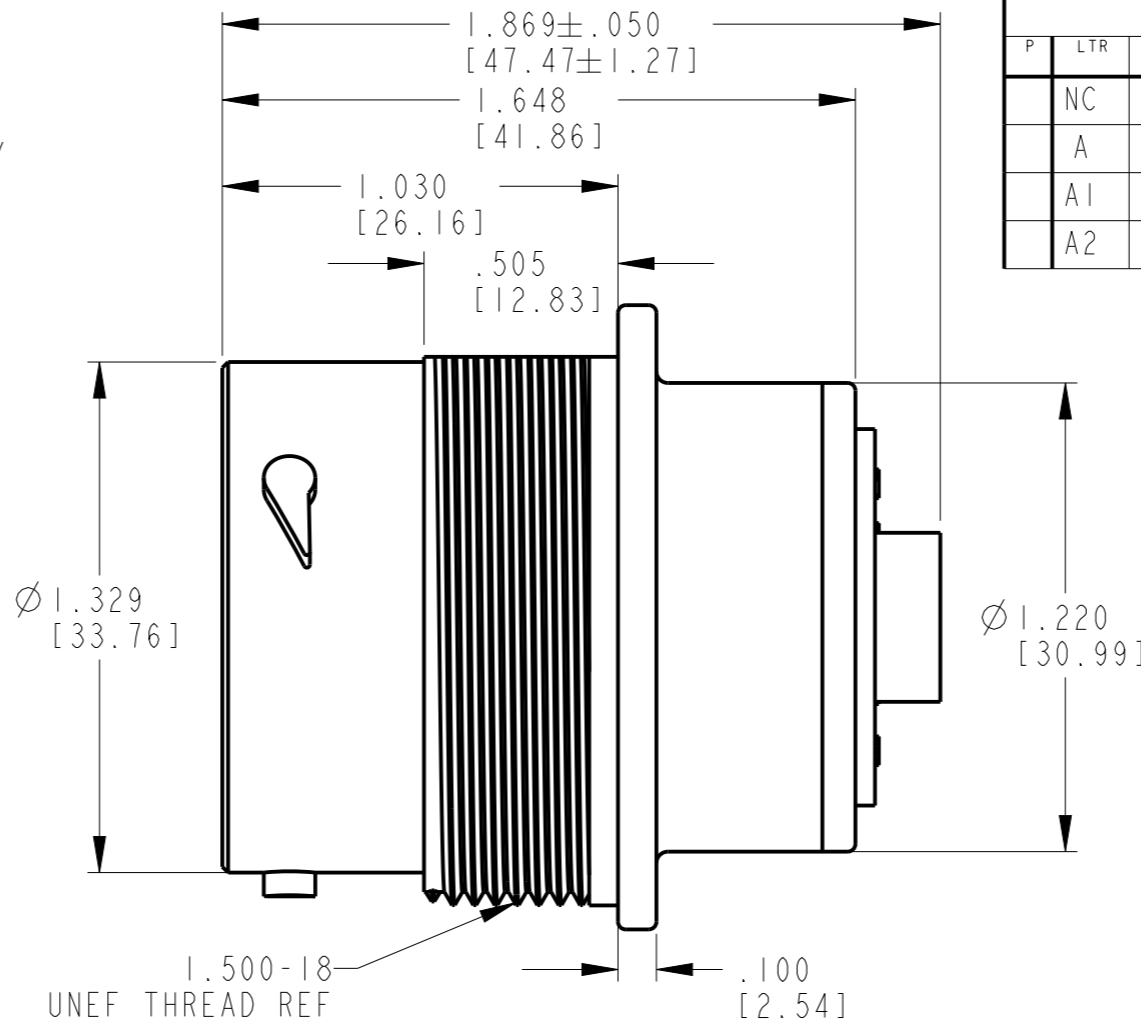
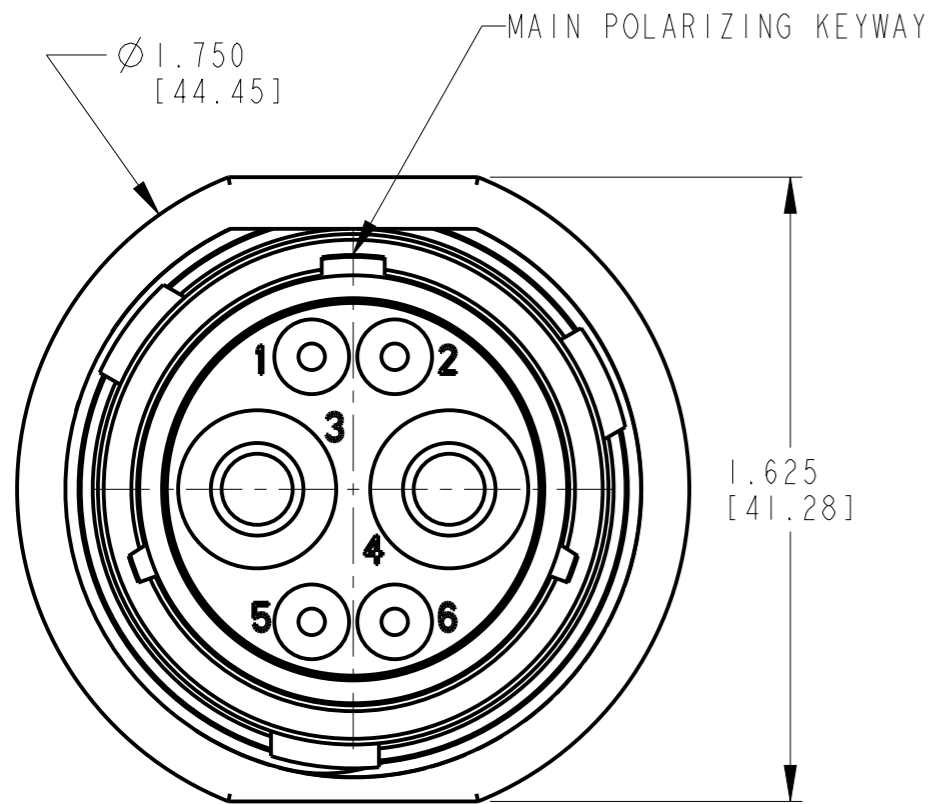


P	LTR	DESCRIPTION	DATE	DWN	APVD
NC		NEW RELEASE PER E.O. PI7330	08FEB2001	-	RDR
A		REVISED PER E.O. PI7424	02JAN2002	-	RDR
A1		REVISED PER PCN E-20-013840	18SEP2020	MK	IG
A2		REVISED PER ECR-21-005465	14MAY2021	EC	IG



5. THIS PART MATES WITH HDP26-18-6S\*-\*\*\*\*. (\*\*\*\*= ALL MODIFICATIONS, \*= TYPE OF SEAL.)

4. FOR CONTACT AND WIRE PERFORMANCE AND APPLICATION CHARACTERISTICS SEE ENVELOPE DWG. 0425-015-0000 AND 0425-021-0000.

3. RECOMMENDED PANEL THICKNESS: .062[1.58] TO .187[4.76].

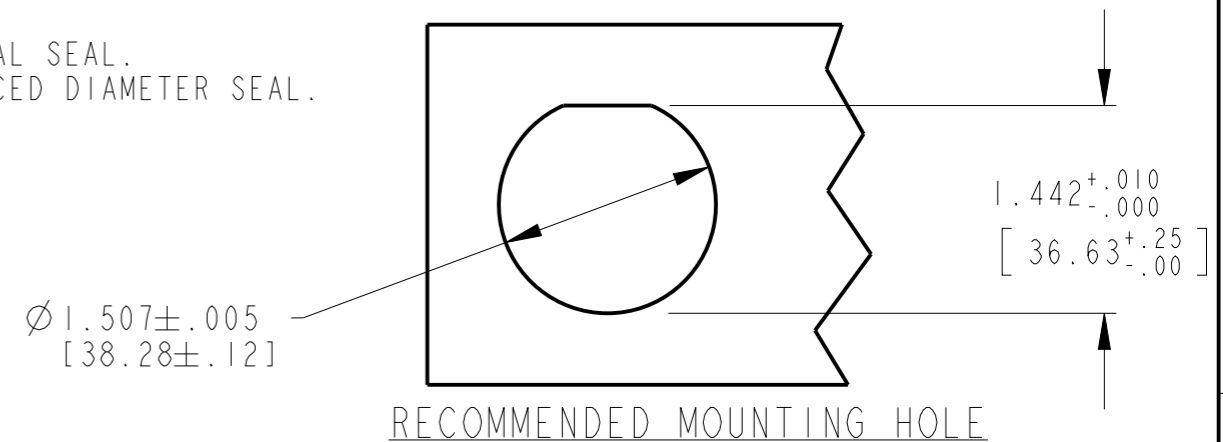
2. THIS CONNECTOR WILL ACCOMMODATE THE FOLLOWING WIRE INSULATION DIAMETERS.

SEAL TYPE	CONTACT SIZE	MIN INSULATION O.D.	MAX INSULATION O.D.	WIRE GAUGE AWG [mm <sup>2</sup> ] RANGE
N	16	.100 [2.54]	.135 [3.40]	14-20 [2.0-0.5mm <sup>2</sup> ]
E	16	.053 [1.35]	.120 [3.05]	14-20 [2.0-0.5mm <sup>2</sup> ]
N OR E	4	.261 [6.63]	.292 [7.42]	6 [13mm <sup>2</sup> ]

1. THIS RECEPTACLE TO BE USED WITH 114020-90 (ALUMINUM) OR 2411-002-1805 (PLASTIC) PANEL NUT AND 2414-002-1886 LOCKWASHER. PLASTIC PANEL NUT IS PREFERRED.

7 DATE CODE: IDENTIFIES THE YEAR, MONTH, DAY AND HOUR OF ASSEMBLY.  
 YEAR: FIRST AND SECOND DIGITS. (14=2014)  
 MONTH: THIRD DIGIT, EXCLUDING 1.A=JAN., B=FEB., C=MARCH... (K=OCT.)  
 DAY: FOURTH AND FIFTH DIGIT (14=14th DAY)  
 HOUR: SIXTH AND SEVENTH DIGIT (11=11AM) WHEN \* = N: NORMAL SEAL

6 WHEN \* = N: NORMAL SEAL.  
 WHEN \* = E: REDUCED DIAMETER SEAL.



RECOMMENDED MOUNTING HOLE

THIS DRAWING IS A CONTROLLED DOCUMENT.		DWN X. SANCHEZ 27JUN2001		
DIMENSIONS: INCH [MM]		CHK J. APOSTOL 31JAN2002		
TOLERANCES UNLESS OTHERWISE SPECIFIED:		APVD S. BEARD 31JAN2002	NAME RECEPTACLE CONNECTOR 18-6 ARRANGEMENT HDP20 SERIES	
0 PLC ±-		PRODUCT SPEC 108-151015	SIZE A3 CAGE CODE 00779 DRAWING NO C-HDP24-18-6PX RESTRICTED TO -	
1 PLC ±-		APPLICATION SPEC 114-151015	SCALE 2.000 SHEET 1 OF 1 REV A2	
2 PLC ±-		WEIGHT 36.6 g		
3 PLC ±.025		CUSTOMER DRAWING		
4 PLC ±-				
ANGLES ±-				
MATERIAL -				
FINISH -				