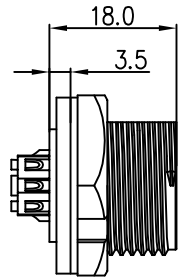


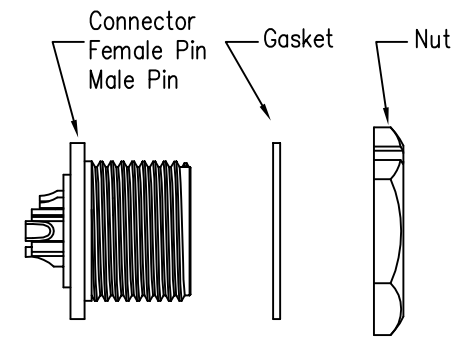
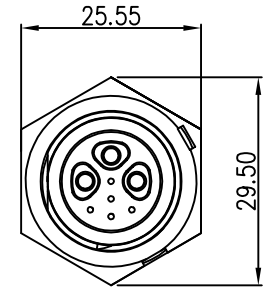
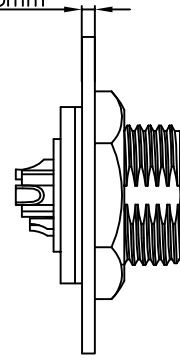
REV.	ECN NO.	DESCRIPTION	SIGN	DATE
C1	N/A	INITIAL DRAWING	Liu	2020/05/13



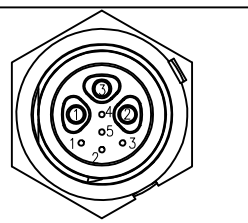
Recommended Panel Cut-Out



Panel T: Max 3.5mm



23XXX615-01
Pin Number



3F+5M

P/N: 23305615-01

Pin Assignments Front View

- Specification:
- 1.Operation Temperature: -45°C~105°C.
 - 2.Insulation Resistance: 100MΩ at DC500V.
 - 3.Contact Resistance: <math>< 10\text{m}\Omega</math>
 - 4.Withstand Voltage: 1000V AC
 - 5.Operating Current: 15A+2A
 - 6.Operating Voltage: DC 125V+30V
 - 7.Waterproof Rate: IP67 (Mated)
 - 8.Housing: Nylon, Black
 - 9.Female Pin: Copper Alloy, Gold Plated
 - 10.Male Pin: Copper Alloy, Gold Plated
 - 11.Gasket: Silicon Gray
 - 12.Panel Nut: Nylon, Black
 - 13.Torque Rate: 0.8~1.0N·m
 - 14.RoHS Compliant.
 - 15.Mating Cap P/N: 806-00021-00



UNIT: mm TOLERANCE .X ±0.25 .XX ±0.15 .XXX ±0.05 ANGLES ±1°	DESCRIPTION Middle Series 3F+5M Screw Type Front Mount Panel		PART NO 23305615-01	DRAWN BY Liu	DATE 2020/05/17		
	SCALE: 1:1	SHEET 1 OF 1				CHECKED BY Mo	DATE 2020/05/17
	REV. C1	SIZE A4				* : Inspection Item	APPROVED BY Panson

THIS INFORMATION IS CONFIDENTIAL AND IS DISCLOSED TO YOU ON CONDITION THAT NO FURTHER DISCLOSURE IS MADE BY YOU TO OTHER THAN CHOGORI PERSONNEL WITHOUT AUTHORIZATION FROM CHOGORI CORP.