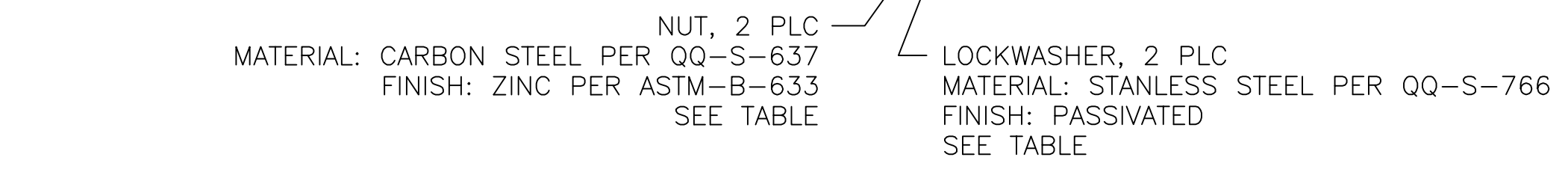
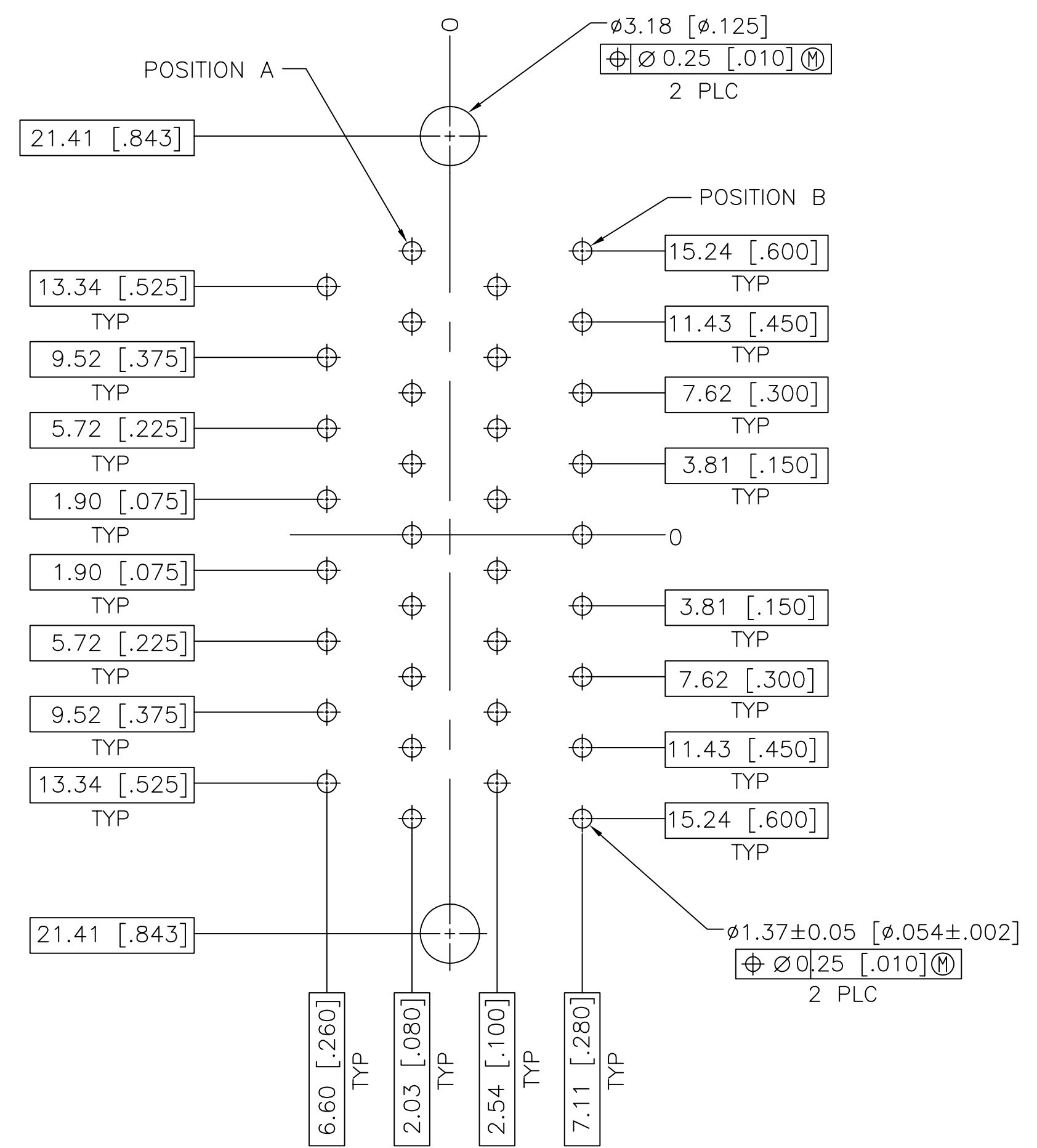
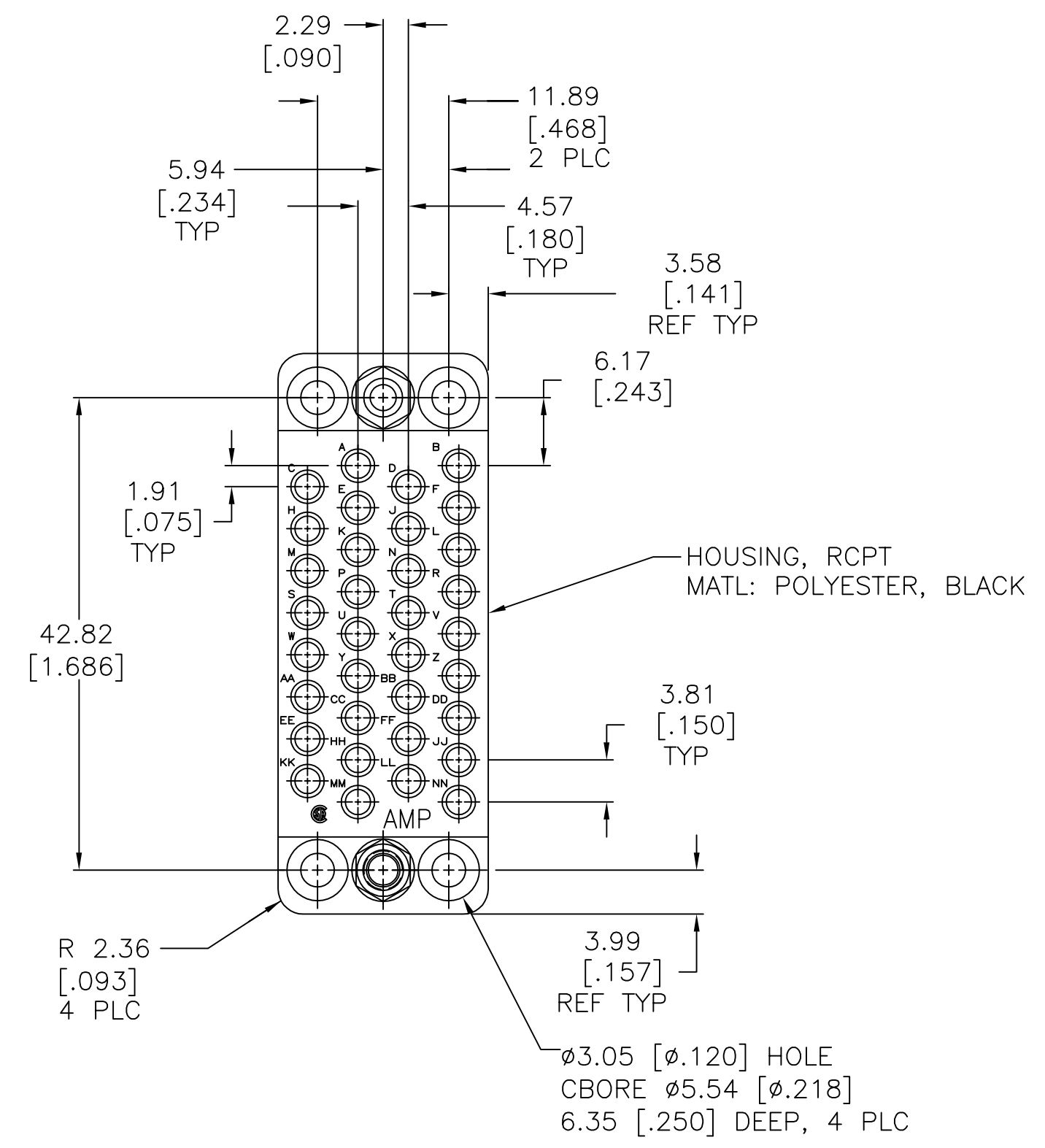
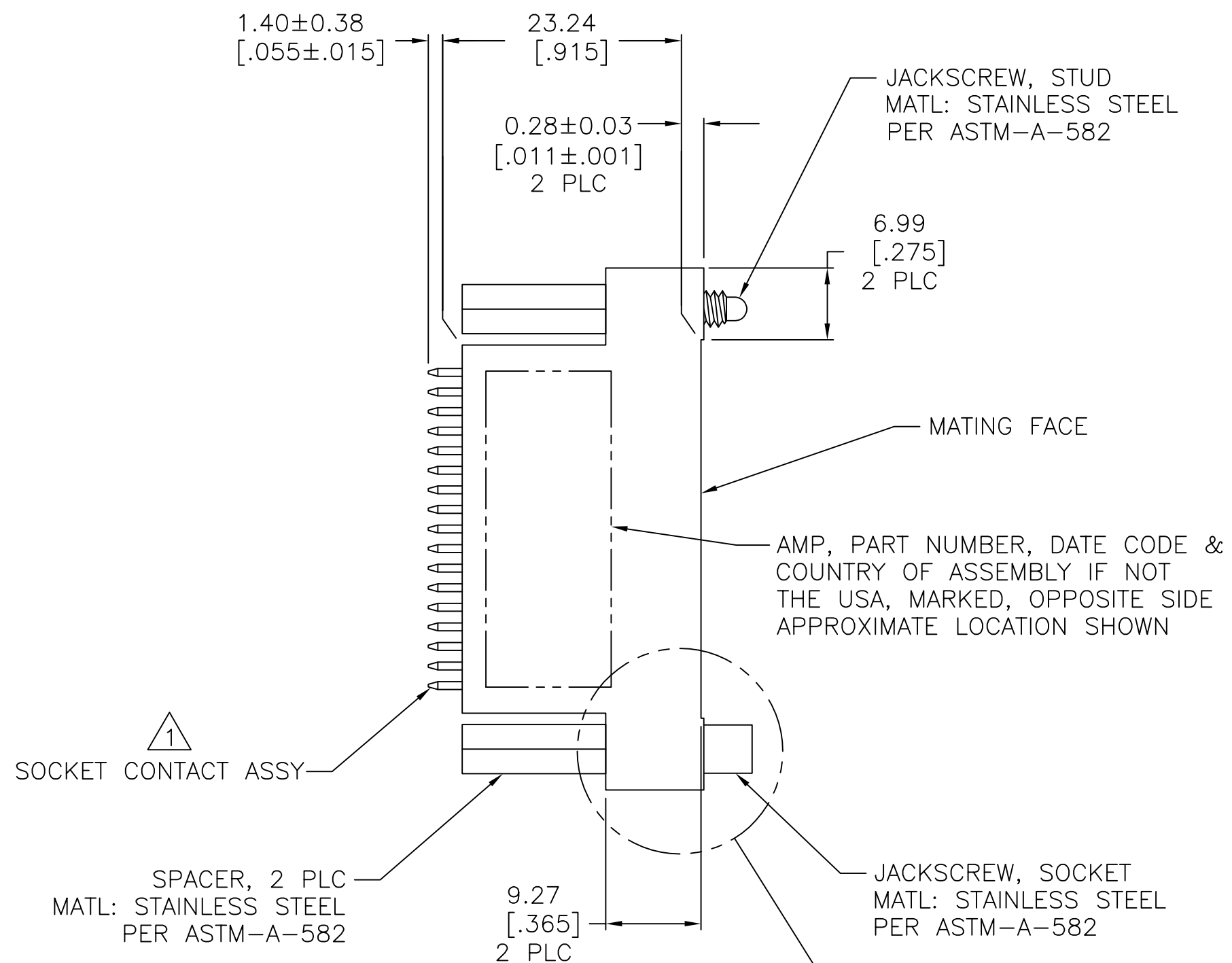
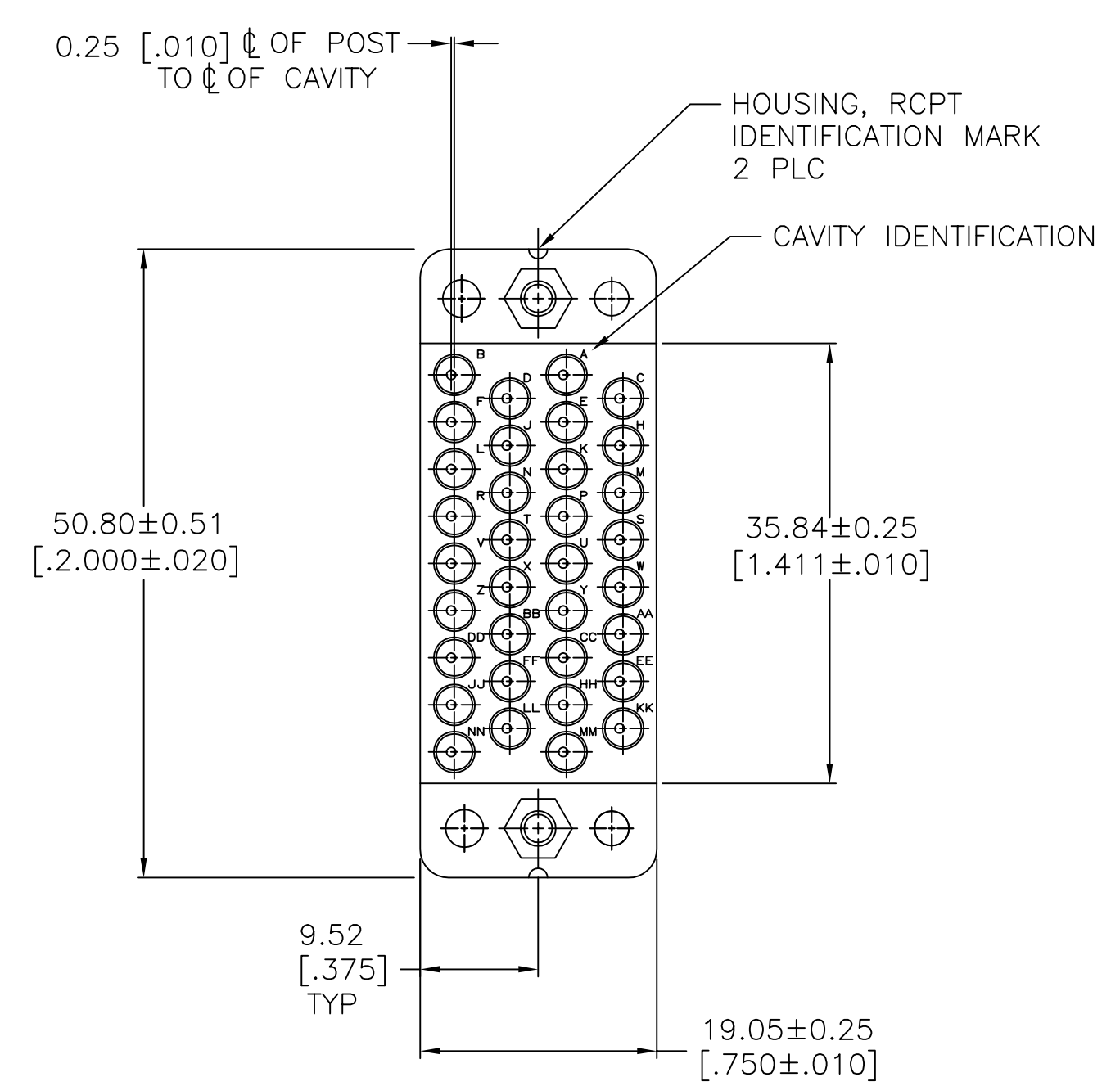


| REVISIONS |                           |             |           |     |      |
|-----------|---------------------------|-------------|-----------|-----|------|
| P         | LTR                       | DESCRIPTION | DATE      | OWN | APVD |
| F2        | REVISED PER ECO-16-004000 |             | 28SEP2016 | NK  | MZ   |
| G         | REVISED PER ECO-17-011042 |             | 01AUG2017 | RS  | MZ   |



213809-4 ONLY

- 1 SOCKET CONTACT ASSEMBLY  
BODY-MATERIAL: BRASS PER MIL-C-50  
FINISH: 0.76um [.000030] MIN GOLD PER MIL-G-45204 FOR A LENGTH OF 5.08 [.200] MIN FROM MATING END, 2.54um [.000100] MIN TIN-LEAD PER MIL-T-10727 FOR A LENGTH OF 6.35 [.250] MIN FROM OPPOSITE END, BOTH OVER 1.27um [.000050] MIN NICKEL PER QQ-N-290.  
SPRING-MATERIAL: STAINLESS STEEL PER QQ-S-766.  
POST-MATERIAL: BRASS PER ASTM-B-134  
FINISH: 2.54um [.000100] MIN TIN-LEAD PER MIL-T-10727 OVER 1.27um [.000050] MIN NICKEL PER QQ-N-290.
- 2 SOCKET CONTACT ASSEMBLY IS SELECTIVELY LOADED AT CIRCUITS A,B,C,D,E,F,H,J,K,P,R,S,T,U,V,W,X,Y,AND AA.
- 3 SOCKET CONTACT ASSEMBLY IS SELECTIVELY LOADED AT CIRCUITS A,B,C,D,E,F,H,J,K,L,N,P,R,S,T,U,V,W,X,Y,AA,BB,AND NN.
- 4 SOCKET CONTACT ASSEMBLY  
BODY-MATERIAL: BRASS PER MIL-C-50  
FINISH: 0.76um [.000030] MIN GOLD PER MIL-G-45204 FOR A LENGTH OF 5.08 [.200] MIN FROM MATING END, 2.54um [.000100] MIN TIN PER MIL-T-10727 FOR A LENGTH OF 6.35 [.250] MIN FROM OPPOSITE END, BOTH OVER 1.27um [.000050] MIN NICKEL PER QQ-N-290.  
SPRING-MATERIAL: STAINLESS STEEL PER QQ-S-766.  
POST-MATERIAL: BRASS PER ASTM-B-134  
FINISH: 2.54um [.000100] MIN TIN PER MIL-T-10727 OVER 1.27um [.000050] MIN NICKEL PER QQ-N-290.
- 5 OBSOLETE PARTS: OBSOLETE CIS STREAMLINING PER D.RENAUD/D.SINISI

| REV | DESCRIPTION | REV | DESCRIPTION          | REV | DESCRIPTION |
|-----|-------------|-----|----------------------|-----|-------------|
| 5   | OBSOLETE    | 4   | NUTS AND LOCKWASHERS | 3   | 1-213809-0  |
| 5   | OBSOLETE    | 4   | SPACERS              | 3   | 213809-9    |
| 5   | OBSOLETE    | 4   | SPACERS              | 2   | 213809-8    |
|     |             | 4   | SPACERS              |     | 213809-7    |
| 5   | OBSOLETE    | 1   | NUTS AND LOCKWASHERS | 3   | 213809-4    |
| 5   | OBSOLETE    | 1   | SPACERS              | 3   | 213809-3    |
| 5   | SUPERSEDED  | 1   | SPACERS              | 2   | 213809-2    |
|     |             | 1   | SPACERS              |     | 213809-1    |

RECOMMENDED PC BOARD LAYOUT  
SCALE 4:1

THIS DRAWING IS A CONTROLLED DOCUMENT.

|                         |  |                          |   |
|-------------------------|--|--------------------------|---|
| DIMENSIONS: mm [INCHES] | TOLERANCES UNLESS OTHERWISE SPECIFIED: | DIN D. BROCKWAY 08-16-94 | STE TE Connectivity                     |
| 0 PLC ± -               | 1 PLC ± -                              | CHK R. STONE 08-25-94    | NAME                                    |
| 2 PLC ± 0.13 [.005]     | 3 PLC ± -                              | APVD                     | PRODUCT SPEC                            |
| 4 PLC ± -               | ANGLES ± -                             |                          | APPLICATION SPEC                        |
| MATERIAL SEE CALLOUTS   | FINISH SEE CALLOUTS                    | WEIGHT                   | SIZE CAGE CODE DRAWING NO RESTRICTED TO |
|                         |  | A1 00779 ©=213809        | SCALE 2:1 SHEET 1 OF 1 REV G            |