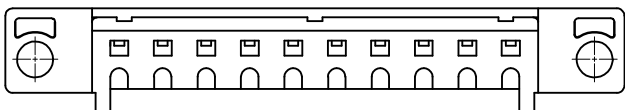
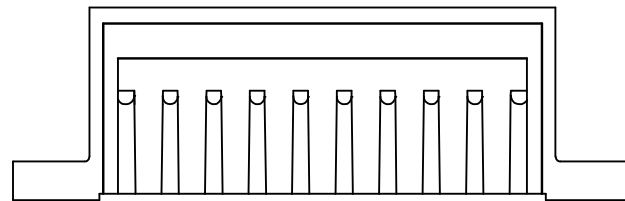
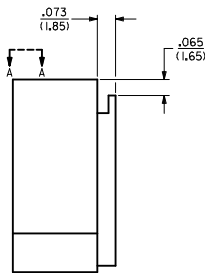
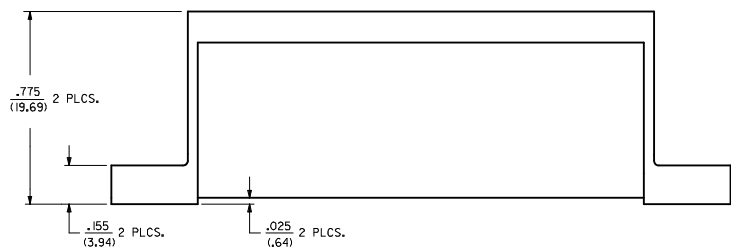
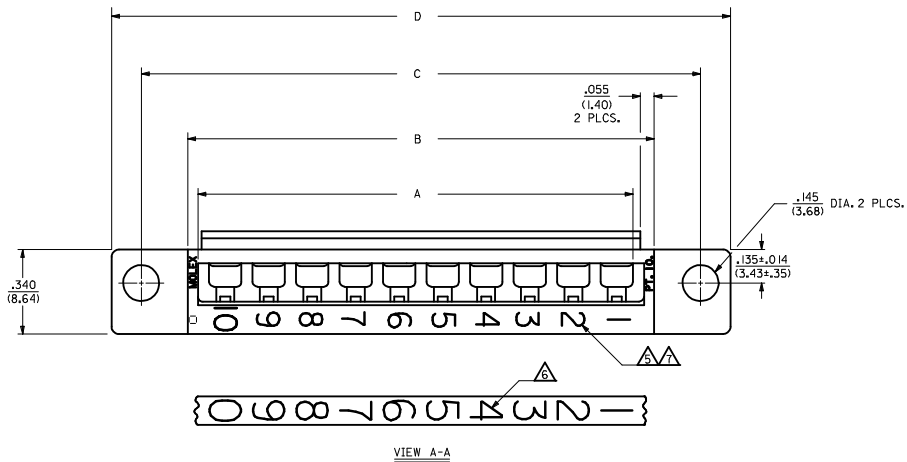


- NOTES:**
- ▲ THESE HOUSINGS ARE FOR USE WITH THE 1457-•• TERMINALS AND MAY BE SUBDIVIDED BY USING THE 1461-K KEY.
  - ▲ THE HOUSINGS ARE ONLY AVAILABLE IN 5, 10, 15, AND 20 CIRCUIT SIZES.
  - ▲ PRODUCT SPECIFICATION PS 50-36 APPLIES.
  - ▲ THESE HOUSINGS CONFORM TO U.L. AND C.S.A. REQUIREMENTS.
  - ▲ .060/(1.52) HIGH RAISED NUMERALS.
  - ▲ .125/(3.18) HIGH RECESSED NUMERALS ON A MATTE BACKGROUND.
  - ▲ .09/(2.3) HIGH INK STAMPED NUMERALS.
  - 8. PACKAGE PER PK-1461-100.



4	01
3	0
2	01
1	0
SHT REV	

<b>MODIFY CORE OUTS</b> IEC NO. UCF2005-2756 DRWN:SBARRA 2005/09/29 CHYK:BARBER 2005/10/10 APPR:SMILLER 2005/10/12	QUALITY SYMBOLS	GENERAL TOLERANCES (UNLESS SPECIFIED)	DIMENSION STYLE	SCALE	DESIGN UNITS	THIRD ANGLE PROJECTION	
	▽=0 ▽=0	mm INCH 4 PLACES ± --- ± --- 3 PLACES ± --- ± .010 2 PLACES ± 0.25 ± .014 1 PLACE ± 0.35 ± --- ANGULAR ±1/2°	IN/MM	4:1	INCH	TITLE HOUSING, COMMONING [.025/(.64) OFFSET]	
	DRAWN BY: AFG CHECKED BY: RHR APPROVED BY: GWF	DATE: 91/02/18 DATE: 91/02/18 DATE: 91/02/18	MATERIAL NO. SEE TABLE	DOCUMENT NO. SD-1461-*	MOLEX INCORPORATED		SHEET NO. 1 OF 4
	DRAFT WHERE APPLICABLE MUST REMAIN WITHIN DIMENSIONS						THIS DRAWING CONTAINS INFORMATION THAT IS PROPRIETARY TO MOLEX INCORPORATED AND SHOULD NOT BE USED WITHOUT WRITTEN PERMISSION

PART NO.	ENG. NO.	NO. CKTS.	DIM. A	DIM. B	DIM. C	DIM. D
07-01-7201	1461-20	20	3.50 (88.9)	3.63 (92.2)	4.00 (101.6)	4.24 (107.7)
07-01-7151	1461-15	15	2.62 (66.5)	2.75 (69.9)	3.13 (79.5)	3.37 (85.6)
07-01-7101	1461-10	10	1.750 (44.45)	1.875 (47.63)	2.250 (57.15)	2.49 (63.2)
07-01-7051	1461-5	5	.875 (22.23)	1.000 (25.40)	1.375 (34.93)	1.615 (41.02)

SPECIAL NUMBERED HOUSINGS CHART			
PART NO.	ENG. NO.	NO. CKTS.	CIRCUIT NUMERALS
07-01-7102	1461-10-1	10	11 THRU 20
07-01-7103	1461-10-2	10	21 THRU 30
07-01-7104	1461-10-3	10	31 THRU 40
07-01-7152	1461-15-1	15	16 THRU 30
07-01-7153	1461-15-2	15	31 THRU 45
07-01-7154	1461-15-3	15	46 THRU 60
07-01-7202	1461-20-1	20	21 THRU 40
07-01-7203	1461-20-2	20	41 THRU 60
07-01-7204	1461-20-3	20	61 THRU 80

INK STAMPED HOUSINGS								
BEFORE INK STAMP		AFTER INK STAMP		NO. CKTS.	DIM. A	DIM. B	DIM. C	DIM. D
PART NO.	ENG. NO.	PART NO.	ENG. NO.					
007-01-7206	1461-20B	007-01-7207	1461-20C	20	3.50 (88.9)	3.63 (92.2)	4.00 (101.6)	4.24 (107.7)
007-01-7156	1461-15B	007-01-7157	1461-15C	15	2.62 (66.5)	2.75 (69.9)	3.13 (79.5)	3.37 (85.6)
007-01-7106	1461-10B	007-01-7107	1461-10C	10	1.750 (44.45)	1.875 (47.63)	2.250 (57.15)	2.49 (63.2)
007-01-7056	1461-5B	007-01-7057	1461-5C	5	.875 (22.23)	1.000 (25.40)	1.375 (34.93)	1.615 (41.02)

SPECIAL INK STAMPED HOUSINGS CHART					
BEFORE INK STAMP		AFTER INK STAMP		NO. CKTS.	CIRCUIT NUMERALS
PART NO.	ENG. NO.	PART NO.	ENG. NO.		
007-01-7106	1461-10B	007-01-7108	1461-10-1C	10	11 THRU 20
		007-01-7109	1461-10-2C	10	21 THRU 30
		007-01-7100	1461-10-3C	10	31 THRU 40
007-01-7156	1461-15B	007-01-7158	1461-15-1C	15	16 THRU 30
		007-01-7159	1461-15-2C	15	31 THRU 45
		007-01-7160	1461-15-3C	15	46 THRU 60
007-01-7206	1461-20B	007-01-7208	1461-20-1C	20	21 THRU 40
		007-01-7209	1461-20-2C	20	41 THRU 60
		007-01-7200	1461-20-3C	20	61 THRU 80

CONNECTIONS SHOWN METRIC INCH

UNITS: DIMENSIONS IN INCHES

TYPICAL	± .015	FRACTIONAL	± .015
FINISH	± .014	DECIMAL	± 0.25
FINISH	± .014	DECIMAL	± 0.25

DATE: 03/22/91

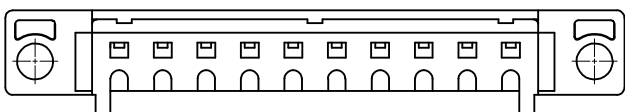
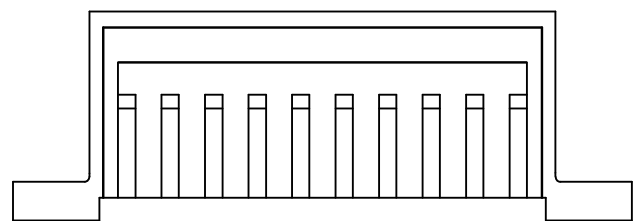
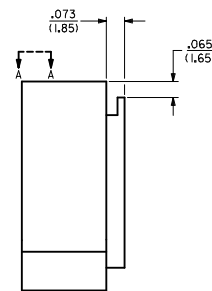
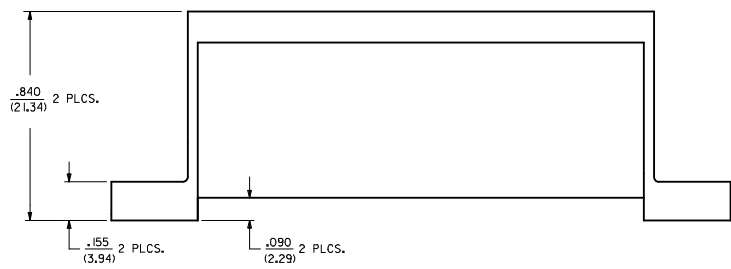
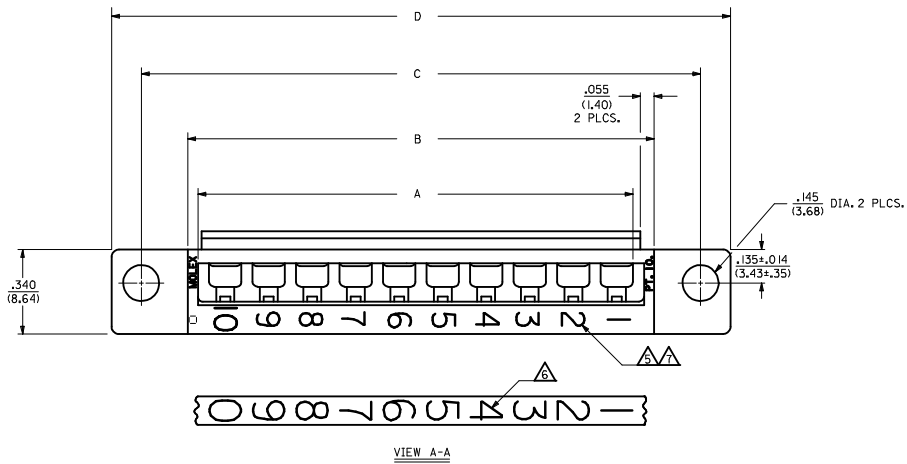
MOLEX INCORPORATED

SEE CHART SD-1461

REVISIONS: 01 SEE SHEET 1

DATE: 03/22/91

- NOTES:**
- ▲ THESE HOUSINGS ARE FOR USE WITH THE 1457-•• TERMINALS AND MAY BE SUBDIVIDED BY USING THE 1461-K KEY.
  - ▲ THE HOUSINGS ARE ONLY AVAILABLE IN 5, 10, 15, AND 20 CIRCUIT SIZES.
  - ▲ PRODUCT SPECIFICATION PS 50-36 APPLIES.
  - ▲ THESE HOUSINGS CONFORM TO U.L. AND C.S.A. REQUIREMENTS.
  - ▲ .060/(1.52) HIGH RAISED NUMERALS.
  - ▲ .125/(3.18) HIGH RECESSED NUMERALS ON A MATTE BACKGROUND.
  - ▲ .09/(2.3) HIGH INK STAMPED NUMERALS.



**MATERIAL:**  
 POLYESTER, UNFILLED, 94V-0.  
 COLOR: BLACK.  
 (REF.: SMES 128C-D)

<b>MODIFY COUR OUTS</b> IEC NO: UCF2005-2756 DRWN:SBARRA 2005/09/29 CHYK:BBARKER 2005/10/10 APPR:SMILLER 2005/10/12	<b>QUALITY SYMBOLS</b> ▽=0 ▽=0	<b>GENERAL TOLERANCES (UNLESS SPECIFIED)</b>		<b>DIMENSION STYLE</b> IN/MM	<b>SCALE</b> 4:1	<b>DESIGN UNITS</b> INCH	THIRD ANGLE PROJECTION	
		4 PLACES ± --- ± ---	mm INCH	DRAWN BY AFG	DATE 95/12/18	TITLE HOUSING, COMMONING [.090/(2.29) OFFSET]		
		3 PLACES ± --- ± .010	± .010	CHECKED BY RHR	DATE 95/12/18	MOLEX INCORPORATED		
		2 PLACES ± 0.25 ± .014	± .014	APPROVED BY GWF	DATE 95/12/18	MATERIAL NO. SEE TABLE	DOCUMENT NO. SD-1461-*	SHEET NO. 3 OF 4
DRAFT WHERE APPLICABLE MUST REMAIN WITHIN DIMENSIONS		ANGULAR ±1/2°		THIS DRAWING CONTAINS INFORMATION THAT IS PROPRIETARY TO MOLEX INCORPORATED AND SHOULD NOT BE USED WITHOUT WRITTEN PERMISSION				