

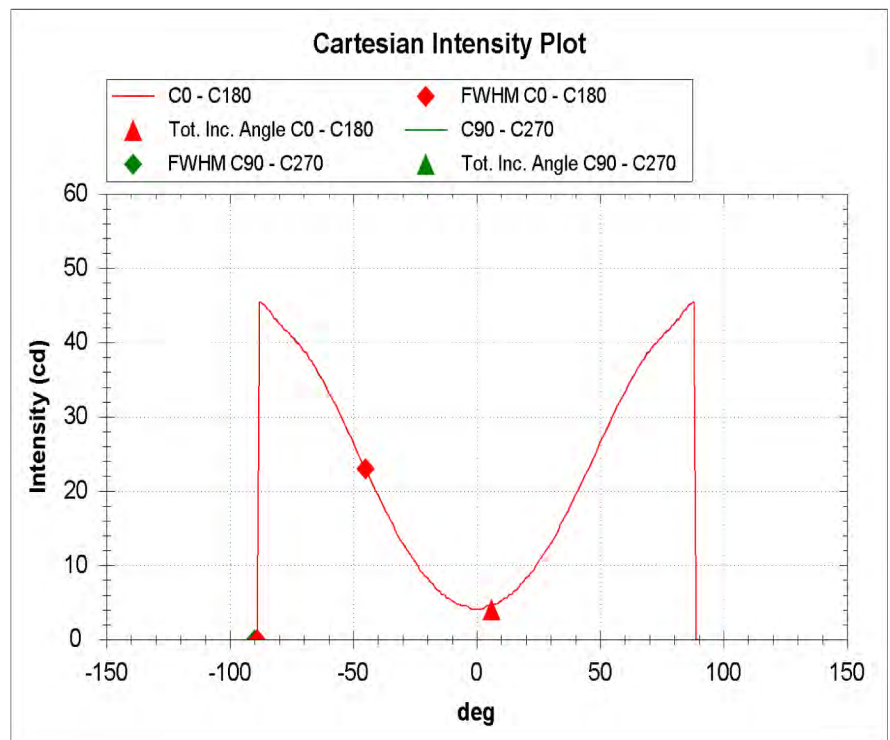
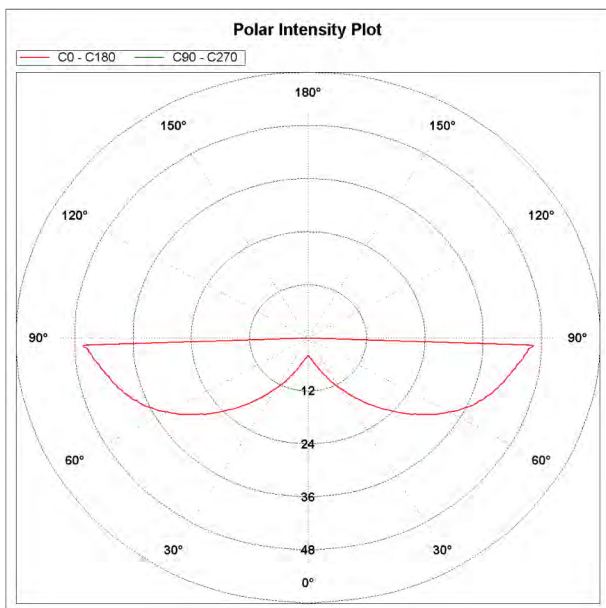
Via Monfalcone 41
200092 Cinisello Balsamo (Milano) - Italy
Tel. 0266013695 - Fax. +39 0266013500

CODE NUMBER: 12000001179

Goniophotometer Type	KLX12M	Operator	SIMONE BASSI
Power Supply Type	ISO TECH ISP3303	Date	31/10/2012
LED Driver Type	//		

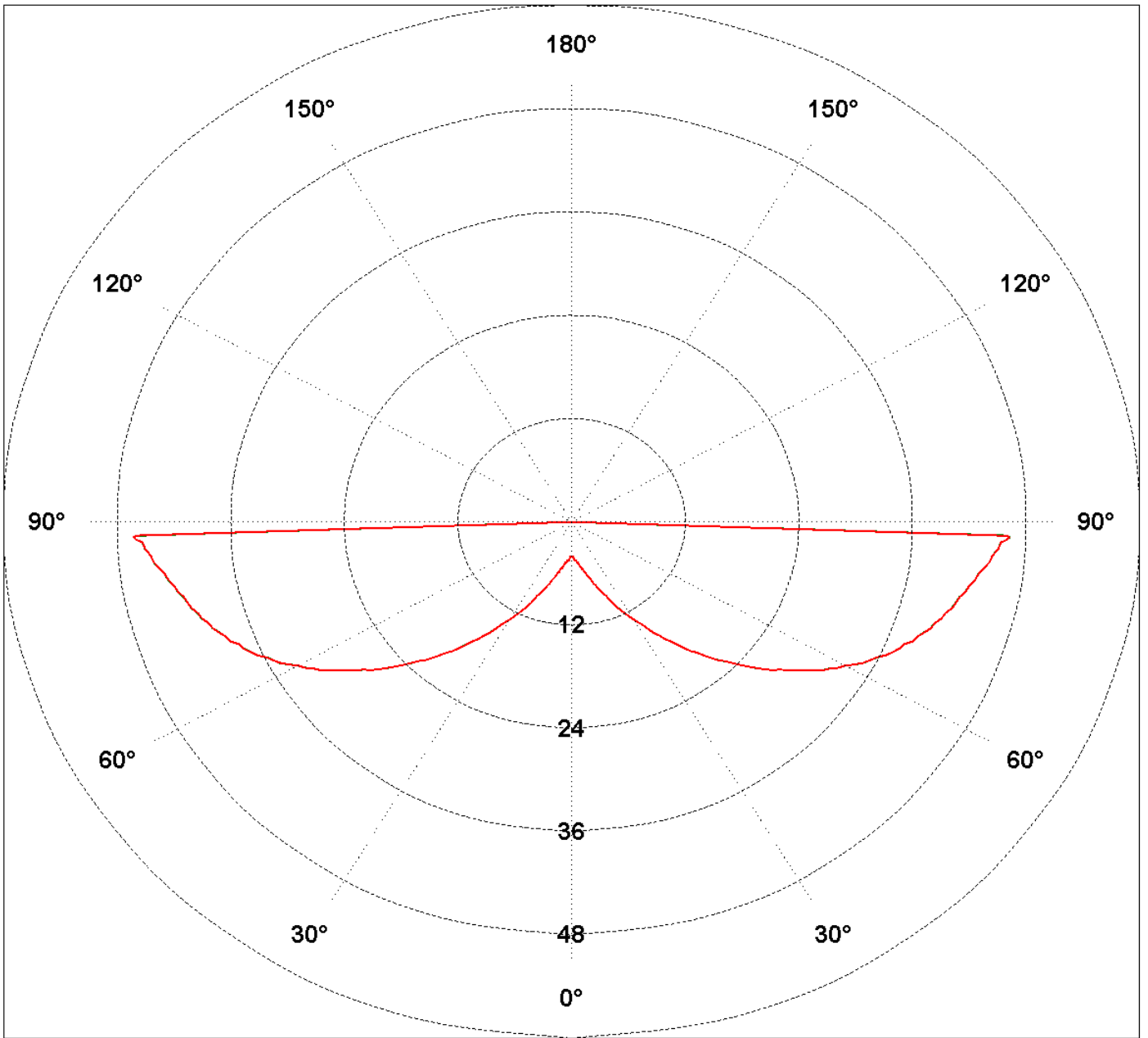
Lamp Model	//	Nominal Flux (lm)	1000	Angle FWHM C Plane	44
Lens Model	PLJT1561	Total Flux (lm)	1000	Angle FWHM γ Plane	45
LED Model	XICATO XSM 8027-1000	Imax (cd)	46		
N. LED	1	Max Ill.@ Meas. Dist. (lux)	45	Total Incl. Angle C Plane	95
Rated Voltage (V)	//	Measurement Distance (m)	5	Total Incl. Angle γ Plane	96
LED Drive Current (mA)	700	Room Temperature (°C)	25		

Notes:
General Optical Measurement Tolerance: +/-10%



Polar Intensity Plot

— C0 - C180 — C90 - C270



CODE NUMBER: 12000001179

Figure C0-C180

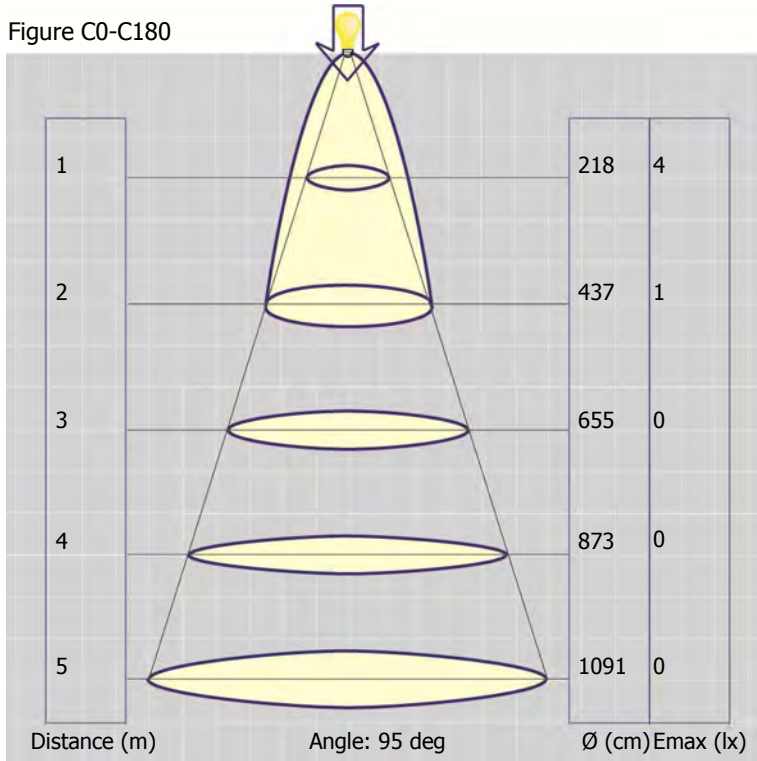
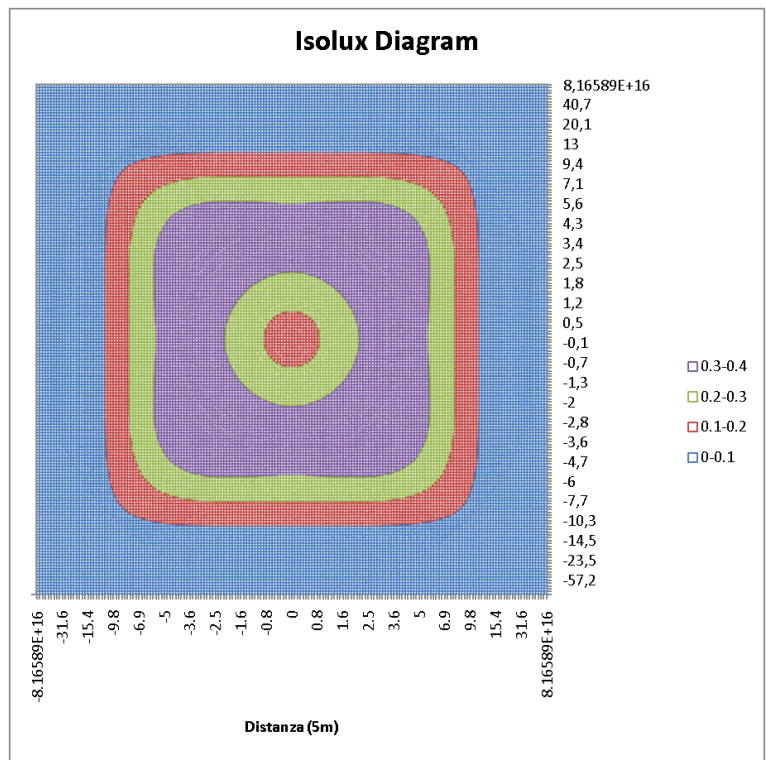
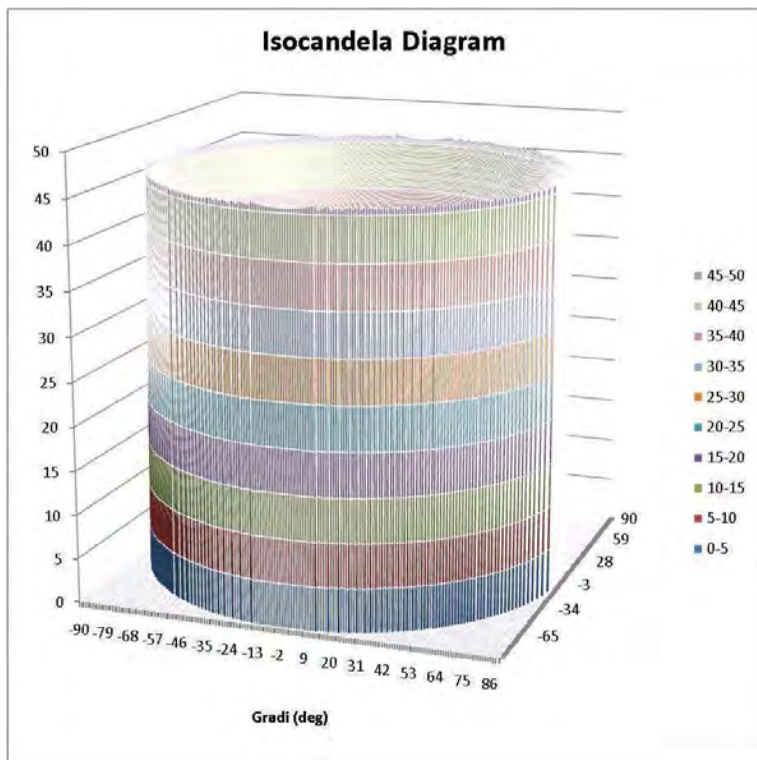
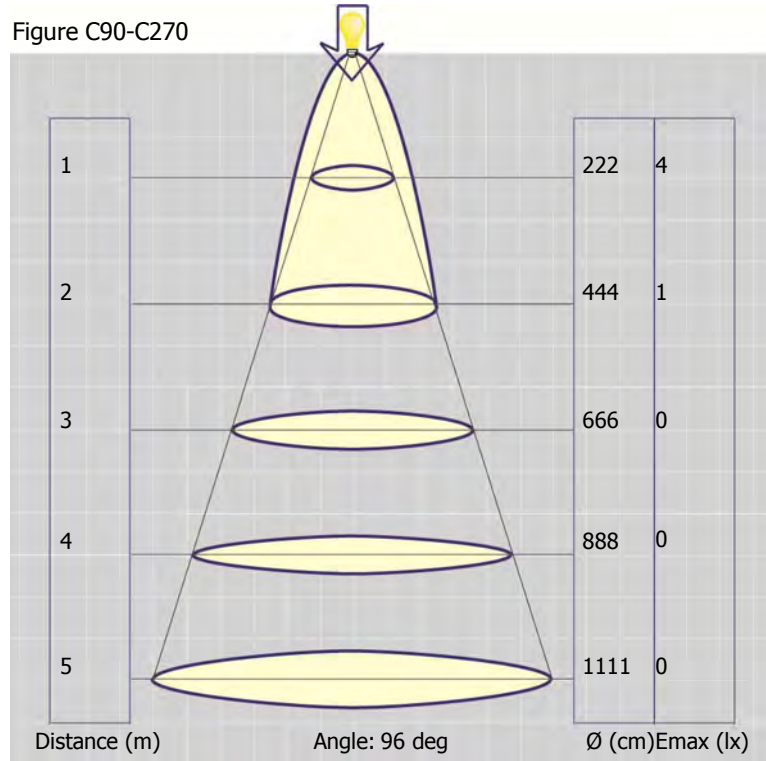
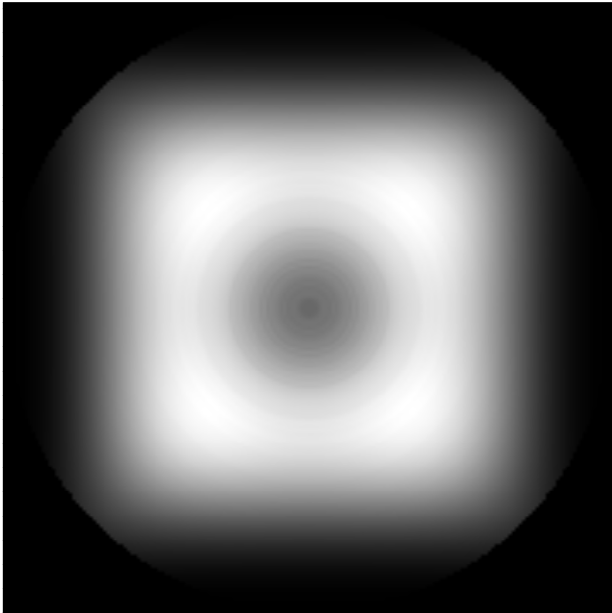


Figure C90-C270

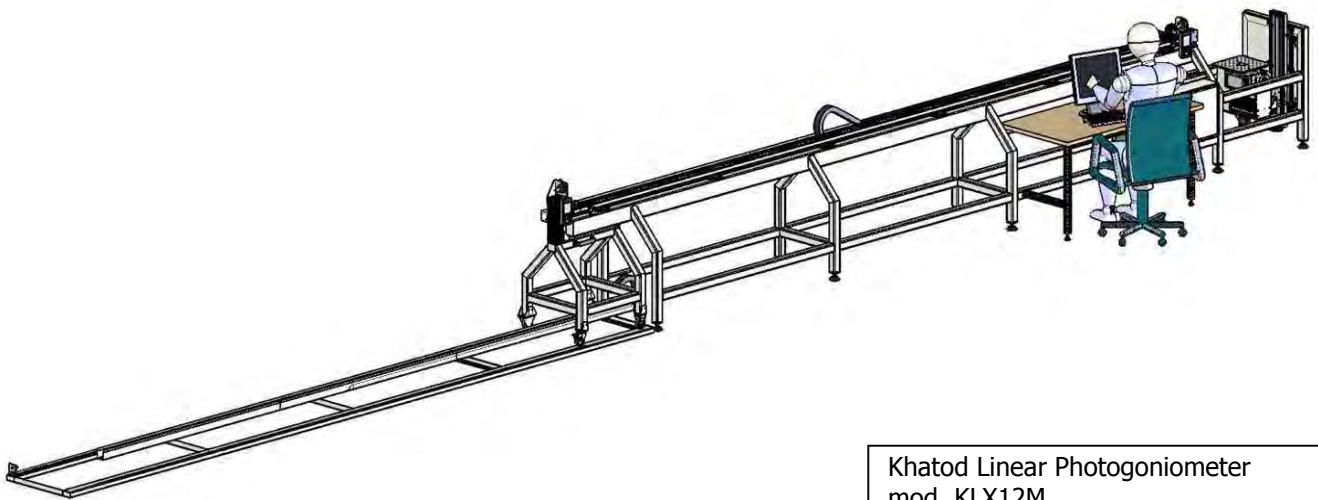
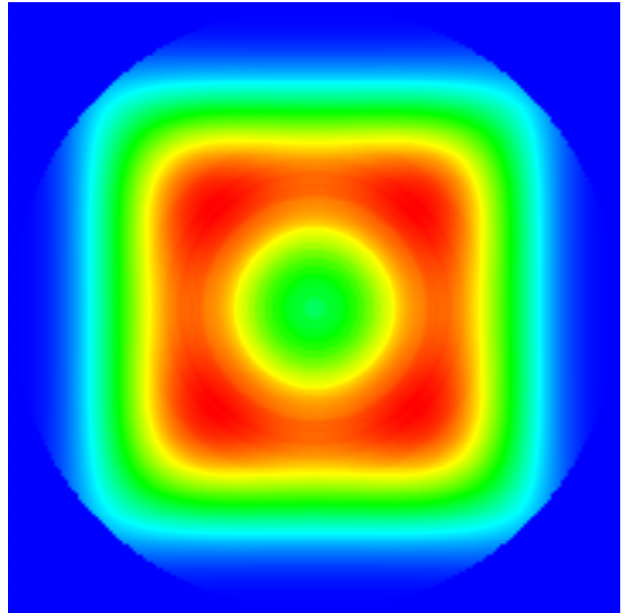


CODE NUMBER: 12000001179

Gray Scale Illuminance @ 5m Distance



False Colours Illuminance @ 5m Distance



Khatod Linear Photogoniometer
mod. KLX12M

Luminous Distribution Intensity Data

CODE NUMBER: 120000001179

C (deg) γ (deg)	0°	10°	20°	30°	40°	50°	60°	70°	80°	90°	100°	110°	120°	130°	140°	150°	160°	170°	180°	190°
0°	4	4	4	4	4	4	4	4	4	4	4	4	4	4	4	4	4	4	4	4
5°	4.5	4.5	4.5	4.5	4.5	4.5	4.5	4.5	4.5	4.5	4.5	4.5	4.5	4.5	4.5	4.5	4.5	4.5	4.5	4.5
10°	5.25	5.25	5.25	5.25	5.25	5.25	5.25	5.25	5.25	5.25	5.25	5.25	5.25	5.25	5.25	5.25	5.25	5.25	5.25	5.25
15°	6.5	6.46	6.48	6.47	6.46	6.46	6.47	6.48	6.46	6.5	6.46	6.48	6.47	6.46	6.46	6.47	6.47	6.46	6.51	6.46
20°	8.25	8.2	8.21	8.2	8.21	8.21	8.2	8.21	8.2	8.25	8.2	8.21	8.2	8.21	8.21	8.2	8.21	8.2	8.25	8.2
25°	10.5	10.5	10.5	10.5	10.5	10.5	10.5	10.5	10.5	10.5	10.5	10.5	10.5	10.5	10.5	10.5	10.5	10.5	10.5	10.5
30°	13	13	13	13	13	13	13	13	13	13	13	13	13	13	13	13	13	13	13	13
35°	16	16.1	16	16.1	16	16.1	16.1	16	16.1	16	16.1	16	16	16	16	16.1	16	16.1	16	16.1
40°	19.5	19.4	19.4	19.4	19.5	19.4	19.4	19.4	19.4	19.5	19.4	19.4	19.4	19.4	19.5	19.5	19.4	19.4	19.5	19.4
45°	22.8	22.8	22.8	22.8	22.8	22.8	22.8	22.8	22.8	22.8	22.8	22.8	22.8	22.8	22.8	22.8	22.8	22.8	22.8	22.8
50°	26.5	26.5	26.5	26.5	26.5	26.5	26.5	26.5	26.5	26.5	26.5	26.5	26.5	26.5	26.5	26.5	26.5	26.5	26.5	26.5
55°	30	30	30	30	30	30	30	30	30	30	30	30	30	30	30	30	30	30	30	30
60°	33.2	33.3	33.3	33.3	33.3	33.3	33.2	33.3	33.3	33.3	33.3	33.3	33.3	33.3	33.3	33.2	33.3	33.3	33.3	33.3
65°	36.5	36.5	36.5	36.5	36.5	36.5	36.5	36.5	36.5	36.5	36.5	36.5	36.4	36.5	36.5	36.5	36.5	36.5	36.5	36.5
70°	38.8	38.7	38.8	38.8	38.8	38.8	38.8	38.8	38.8	38.8	38.8	38.8	38.8	38.8	38.8	38.8	38.8	38.8	38.7	38.8
75°	40.8	40.8	40.8	40.8	40.8	40.8	40.8	40.8	40.8	40.8	40.8	40.8	40.8	40.8	40.8	40.8	40.8	40.8	40.7	40.8
80°	42.5	42.5	42.5	42.5	42.6	42.5	42.5	42.5	42.5	42.5	42.5	42.5	42.5	42.6	42.5	42.5	42.5	42.5	42.5	42.5
85°	44.5	44.5	44.5	44.6	44.5	44.5	44.5	44.5	44.5	44.5	44.5	44.5	44.6	44.5	44.5	44.6	44.5	44.5	44.5	44.5
90°	0	0	0	0	0.38	0.38	0	0	0	0	0	0	0	0.38	0.38	0	0	0	0	0

200°	210°	220°	230°	240°	250°	260°	270°	280°	290°	300°	310°	320°	330°	340°	350°
4	4	4	4	4	4	4	4	4	4	4	4	4	4	4	4
4.5	4.5	4.5	4.5	4.5	4.5	4.5	4.5	4.5	4.5	4.5	4.5	4.5	4.5	4.5	4.5
5.25	5.25	5.25	5.25	5.25	5.25	5.25	5.25	5.25	5.25	5.25	5.25	5.25	5.25	5.25	5.25
6.48	6.47	6.46	6.46	6.47	6.48	6.46	6.5	6.46	6.48	6.47	6.46	6.46	6.47	6.48	6.46
8.21	8.2	8.21	8.21	8.2	8.21	8.2	8.25	8.2	8.21	8.2	8.21	8.21	8.2	8.21	8.2
10.5	10.5	10.5	10.5	10.5	10.5	10.5	10.5	10.5	10.5	10.5	10.5	10.5	10.5	10.5	10.5
13	13	13	13	13	13	13	13	13	13	13	13	13	13	13	13
16	16.1	16.1	16	16.1	16	16.1	16	16.1	16	16	16.1	16	16	16	16.1
19.4	19.5	19.4	19.4	19.5	19.4	19.4	19.5	19.4	19.4	19.4	19.4	19.4	19.5	19.4	19.4
22.8	22.8	22.8	22.8	22.8	22.8	22.8	22.8	22.8	22.8	22.8	22.8	22.8	22.8	22.8	22.8
26.5	26.5	26.5	26.5	26.5	26.5	26.5	26.5	26.5	26.5	26.5	26.5	26.5	26.5	26.5	26.5
30	30	30	30	30	30	30	30	30	30	30	30	30	30	30	30
33.3	33.2	33.3	33.3	33.3	33.3	33.3	33.3	33.3	33.3	33.3	33.3	33.3	33.3	33.3	33.3
36.5	36.4	36.5	36.5	36.4	36.5	36.5	36.5	36.5	36.5	36.5	36.5	36.5	36.5	36.5	36.5
38.8	38.8	38.8	38.8	38.8	38.8	38.8	38.8	38.8	38.8	38.8	38.8	38.8	38.8	38.8	38.8
40.8	40.8	40.8	40.8	40.8	40.8	40.8	40.8	40.8	40.8	40.8	40.8	40.8	40.8	40.8	40.8
42.5	42.5	42.6	42.5	42.5	42.5	42.6	42.5	42.5	42.5	42.5	42.6	42.5	42.5	42.5	42.6
44.5	44.6	44.5	44.5	44.6	44.5	44.6	44.5	44.5	44.5	44.5	44.5	44.6	44.6	44.5	44.6
0	0	0.38	0.38	0	0	0	0	0	0	0	0.38	0.38	0	0	0

Lens characteristics

Parameter	Symbol	Rating	Unit
Lens Material	PC Optics, Aluminium Reflective Coating with protective clear coat	--	--
Operating Temperature	Topr	-40 to +120	°C
Storage Temperature	Tstg	-40 to +120	°C

Notes:

Please note that flow lines and weld lines on the external surfaces of the lenses are acceptable if the optical performance of the lens is within the specification described in the section “OPTICAL CHARACTERISTICS”

- Should you require further information, please contact Khatod for advice.
- All lens testing must be subject to identical conditions as Khatod test condition.
- Published by Khatod optoelectronic srl - All the data contained in this document are the property of Khatod optoelectronic srl and may change without notice.

KHATOD LENS Use And Maintenance

- DO NOT HANDLE OR INSTALL LENSES WITHOUT WEARING GLOVES, SKIN OILS MAY DAMAGE LENS OR LIGHT TRANSMISSION
- CLEAN LENSES WITH MILD SOAP AND WATER AND A SOFT CLOTH
- DO NOT USE ANY COMMERCIAL CLEANING SOLVENTS ON LENSES

Khatod SRL, Milan, Italy, manufactures lenses for LEDs. Any other use of the lens shall void our liability and warranty. The lenses are an inert component to be used in the manufacture of various products. Our warranty and liability are limited only to the manufacture of the lens. You may not modify, copy, distribute reproduce, license or alter the lens and related materials of Khatod SRL. Khatod SRL does not warrant against damages or defects arising out of the use or misuse of the products; against defects or damage arising from improper installation, or against defects in the product or in its components. No warranty of any kind, expressed or implied, is made regarding the safety of the products. The entire risk as to the quality or performance of the product is with the buyer. In no event shall Khatod SRL be liable for any direct, indirect, punitive, incidental, special, consequential damages, or any damages whatsoever arising out of or connected with the use or misuse of the product. Khatod SRL shall not have any obligation with respect to the product or any part thereof, whether based on contract, tort, strict liability or otherwise. Buyer assumes all risks and liability from use of the product. The laws of Milan, Italy govern this product warranty and liability and you hereby consent to the exclusive jurisdiction and venue of courts in Milan, Italy in all disputes arising out of or relating to the use of this product. Production, marketing, distribution, sale of these products as well as their possible modifications and variations are only exclusive right of Khatod Optoelectronic S.r.l.

No company can perform any of these actions without written permission released by Khatod Optoelectronic S.r.l. -
REPRODUCTION PROHIBITED -