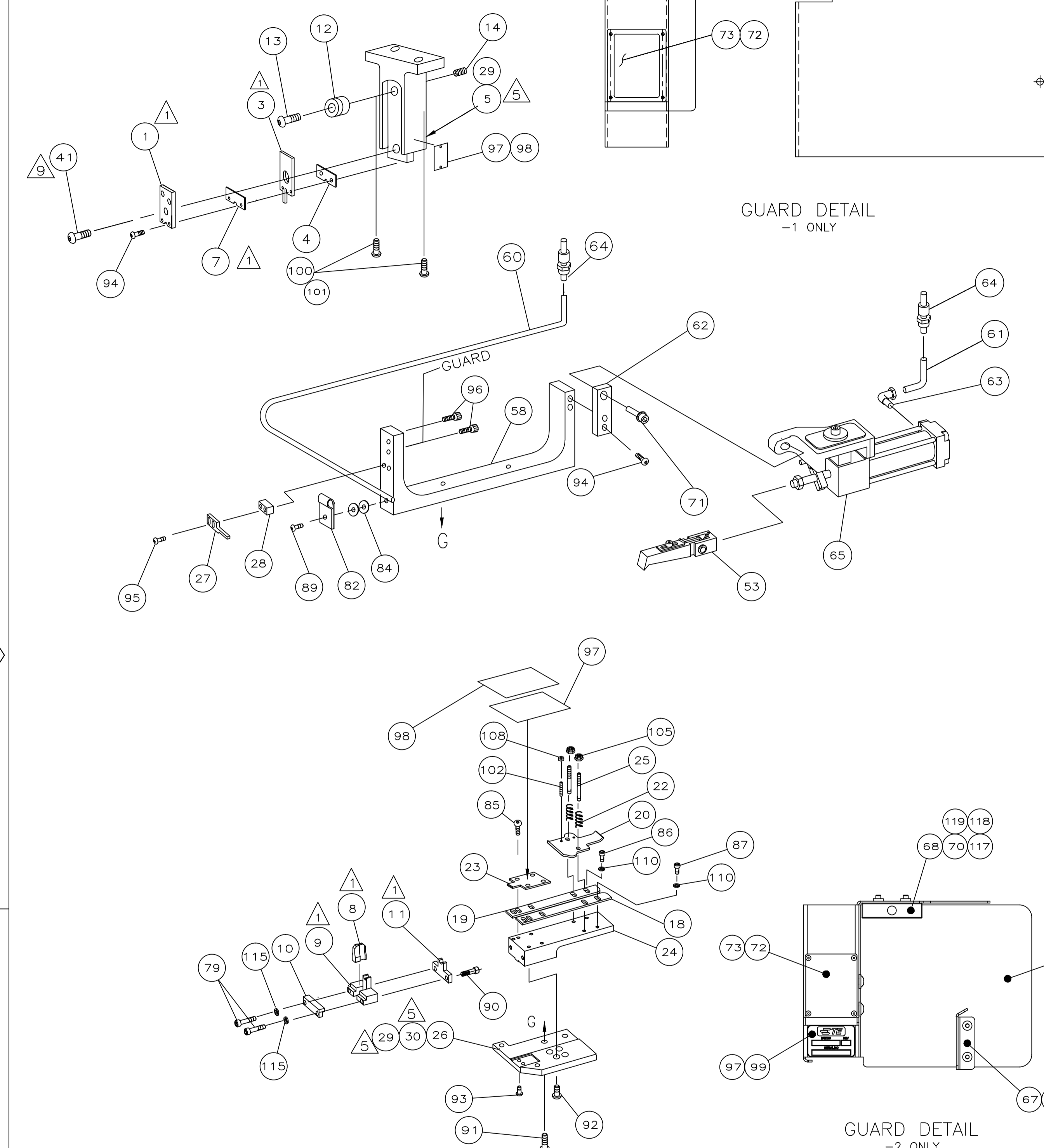


DRAWING MADE IN THIRD ANGLE PROJECTION

566402 566402

PART NUMBER	REV	FIRST USED	MACHINE REFERENCE	FEED TYPE
566402-1	B	356462-2	G-SPLICE TERM	AIR FEED
566402-2	D	2161300-1	SK CE & GI THRU SPLICE	AIR FEED
7-566402-7	B	356462-2	SPARE PARTS KIT	-
7-566402-8	D	-	CONV. KIT FOR -1 TO -2	-



TERMINAL NAME: AMPLIVAR SPLICE	
	280002
	280003
	62306
TERM APPL SPEC 114-2002	
TERMINAL NAME: AMPLIVAR SPLICE	
	280004
	280005
	280007
TERM APPL SPEC 114-2002	

CRIMPING DATA			
PAD LTR	CRIMP HEIGHT	WIRE SIZE	
7	.078 ±.002 [1.98 ±.05mm]	5000-4100 CMA	
7	.074 ±.002 [1.88 ±.05mm]	4100-3300 CMA	
6	.069 ±.002 [1.75 ±.05mm]	3300-2400 CMA	
6	.065 ±.002 [1.65 ±.05mm]	2400-1600 CMA	
CRIMP SIZE	TYPE	RANGE	
WIRE	.110 [2.79mm]	F	1500-5000 CMA
INSUL	-	-	-
FEED	APPL INST 408-8318 (-1) 408-127000 (-2)	SET UP GAGE	LAYOUT
.315	-	-	-
WIRE STRIP LENGTH -			
CRIMPING DATA			
PAD LTR	CRIMP HEIGHT	WIRE SIZE	
5	.057 ±.002 [1.45 ±.05mm]	3000-2400 CMA	
5	.053 ±.002 [1.35 ±.05mm]	2400-1800 CMA	
4	.049 ±.002 [1.24 ±.05mm]	1800-1200 CMA	
4	.046 ±.002 [1.17 ±.05mm]	1200-600 CMA	
CRIMP SIZE	TYPE	RANGE	
WIRE	.110 [2.79mm]	F	600-3000 CMA
INSUL	-	-	-

QTY	REQD	PER	ASSY	PART NO	DESCRIPTION	ITEM NO	
2	-	2	-	18029-2	M4 HEX NUT	119	
2	-	2	-	18025-2	M4 LOCK WASHER	118	
2	-	2	-	18027-2	M4 FLAT WASHER	117	
1	-	1	-	408-32162	THRU SPLICE IS SHEET-GII	116	
-	-	2	2	21024-3	WASHER,LOCK(#6)RET PLATE	115	
-	-	1	-	408-127000	THRU SPLICE IS SHEET	113	
-	-	1	1	217238-1	GENERAL INSTRUCTION PACKAGE	112	
-	-	-	1	408-8318	THRU SPLICE IS SHEET	111	
-	-	2	2	21024-4	WASHER,LOCK(NO.8)SHEAR BL	110	
-	-	2	2	21018-4	NUT,HEX(4-40)DRAG	108	
-	-	2	2	21022-2	NUT,HEX SL(8-32)DRAG STUD	105	
-	-	2	2	4-21078-8	SKT SKT SET (4-40x.75)DRAG	102	
2	-	2	-	3-18023-3	SCR, SHC (M6x50)	101	
-	-	2	-	3-18023-1	SCR, SHC (M6x30)	100	
-	-	1	1	690701-2	PLATE, IDENTIFICATION	99	
-	-	1	1	819347-1	PLATE, IDENTIFICATION	98	
-	-	3	3	25527-3	TAPE, POLYURETHANE FOAM	97	
-	-	2	2	2-21002-6	SCR,BHC(8-32x.25)GUARD	96	
-	-	2	2	8-21002-9	SCR,SHC(8-32x.75)STRIPPER	95	
-	-	2	2	2-21002-8	SCR, BHC (10-32x.75) EXT. FEED	94	
-	-	2	2	2-22733-0	SCR,SHC(10-32x.38)ANVIL	93	
-	-	4	4	3-21002-4	SCR,BHC(1/4-20x.62)ST GD PL	92	
-	-	2	2	2-22733-8	SCR, BHC(1/4-20x.62) FEED BRKT	91	
-	-	2	2	1-21002-6	SCR,BHC(6-32x.25)PLATE GUIDE	90	
-	-	1	1	1-21002-8	SCR, BHC 6-32 X .50 LG.	89	
-	-	-	3	21018-7	NUT, HEX (10-32) GUARD	88	
-	-	2	2	2-21000-6	SCR,SHC(8-32x.38)STRIP GUIDE	87	
-	-	4	4	2-21002-2	SCR,BHC(8-32x.50)STRIP GUIDE	85	
-	-	2	2	21899-1	WASHER, FLAT #6	84	
-	-	-	3	1-21899-3	WASHER, LOCK (NO. 10) GUARD	83	
-	-	1	1	986220-3	CABEL CLAMP	82	
-	-	-	1	1424336-1	GUARD,APPLICATOR FEED	81	
-	-	-	3	2-21002-7	SCR,BHC10-24UNCX.50LG.	80	
-	-	2	2	1-21000-9	SCR,SHC(6-32X.88)SH PL	79	
-	-	-	2	2-21002-5	SCR, BHC (10-32x.25) GUARD	78	
-	-	-	1	1338320-1	GUARD, END FEED	76	
-	-	4	4	1-21000-0	SCR, SHC (2-56x.25) GUARD WINDOW	75	
-	-	1	1	1338174-1	WINDOW, GUARD	74	
-	-	1	1	3-21001-3	SCR, SHC (3/8-16x.75) FEED ASSY	71	
-78	-77	-2	-1	U/M	PART NO	DESCRIPTION	ITEM NO
				REVISION OF EACH ASSY NO (WHEN BLANK, USE DWG REVISION)			
QTY REQD PER ASSY				PARTS LIST			

- 1 RECOMMENDED SPARE PARTS.
- 2 GUARD MUST BE IN PLACE WHEN OPERATING APPLICATOR IN A BENCH MACHINE.
- 3 SEE DRAWING FOR COMPONENTS
- 4 RECOMMENDED SET UP WIRE FOR TERMINAL 280003. FOR APPLICATOR QUALIFICATION ONLY.
- 5 ITEM NOT SHOWN.
- 6 USE MANUAL PRECISION ADJUSTMENT LEVER ON G TERMINATOR TO ACHIEVE PROPER CRIMP HEIGHT.
- 7 SOLID WIRE ON BOTTOM
- 8 ITEM 81 IS ATTACHED TO THE G TERMINATOR GUARD DOOR WITH ITEM 80, 83, 88.

WIRE COMBINATION DATA			
REF	REF	MAG	WIRE
PAD LTR	CRIMP HEIGHT		
7	.078	(2)	17
6	.065	(1) 19 & (1)	2

CRIMPER BOLT MUST BE LOOSENED TO CHANGE CRIMP HEIGHT ADJUSTING WHEEL. BE SURE TO SEAT THE CRIMPER AGAINST THE ADJUSTING WHEEL AND REALIGN THE TOOLING.

D	ECR-15-011870	RS	AUG15
C	ECR-11-025988	SX	DEC11
B2	ECR-11-024660	SX	DEC11
B1	ECR-10-022225	RS	OCT10
B	0150-1109-01	TB	OCT01
A	PRODUCT RELEASE	CMR	MARCH01
P F	LTR	REVISION RECORD	APP DATE

TE Connectivity
Harrisburg, PA 17105-3608

EF PIGTAIL SPLICE W/TRIM G SPLICE

SCALE: 1 OF 1 REV D

00779 CUSTOMER AND ASSEMBLY DRAWING 1

THIS DRAWING IS A CONTROLLED DOCUMENT.

JUN11.2001
RELEASED FOR PUBLICATION
BY AMP INCORPORATED. ALL RIGHTS RESERVED.
THIS DRAWING IS UNCLASSIFIED
COPYRIGHT 2001