

Surge protection plug - CTM 2X1- 12DC - 2838584

Please be informed that the data shown in this PDF Document is generated from our Online Catalog. Please find the complete data in the user's documentation. Our General Terms of Use for Downloads are valid (<http://phoenixcontact.com/download>)



LSA-PLUS plug (COMTRAB CTM) with protective circuit for 2-conductor signal circuits grounded on one side. Nominal voltage: 12 V DC

Your advantages

- ✓ Can be used in LSA-PLUS disconnect and control strips or CT-TERMIBLOCK
- ✓ The CTM 10-MAG surge protection magazine can be freely fitted with various protective plugs
- ✓ Space-saving LSA-PLUS connection technology
- ✓ Typical installation locations include marshalling distributors
- ✓ Modular compact protection for high-density networks

RoHS


12V

IP20

IEC



Key Commercial Data

| | |
|--------------|---|
| Packing unit | 10 pc |
| GTIN |  4 017918 819606 |
| GTIN | 4017918819606 |

Technical data

Dimensions

| | |
|--------|---------|
| Height | 21 mm |
| Width | 9.5 mm |
| Depth | 53.5 mm |

Ambient conditions

| | |
|---------------------------------|------------------|
| Ambient temperature (operation) | -25 °C ... 75 °C |
| Degree of protection | IP20 |

General

| | |
|--|-------|
| Housing material | PA |
| Flammability rating according to UL 94 | V-0 |
| Color | black |

Surge protection plug - CTM 2X1- 12DC - 2838584

Technical data

General

| | |
|--|--|
| Standards for clearances and creepage distances | DIN VDE 0110-1 |
| | IEC 60664-1 |
| Overvoltage category | II |
| Degree of pollution | 2 |
| Mounting type | On CT-TERMIBLOCK and LSA-PLUS disconnect strip |
| Type | LSA-PLUS module |
| Number of positions | 2 |
| Direction of action | Line-Line & Line-Earth Ground |
| Arrester can be tested with CHECKMASTER from software version: | From SW rev. 1.10 |

Protective circuit

| | |
|--|--|
| IEC test classification | B2 |
| | C1 |
| | C2 |
| | C3 |
| | D1 |
| VDE requirement class | B2 |
| | C1 |
| | C2 |
| | C3 |
| | D1 |
| Nominal voltage U_N | 12 V DC |
| Maximum continuous voltage U_C | ± 15 V DC |
| | 10 V AC |
| Rated current | 380 mA AC (25 °C) |
| Operating effective current I_C at U_C | ≤ 5 μ A |
| Residual current I_{PE} | ≤ 2 μ A |
| Nominal discharge current I_n (8/20) μ s (line-earth) | 5 kA |
| Pulse discharge current I_{imp} (10/350) μ s (line-earth) | 1 kA |
| Total discharge current I_{total} (8/20) μ s | 10 kA |
| Total discharge current I_{total} (10/350) μ s | 2.5 kA |
| Max. discharge current I_{max} (8/20) μ s maximum (line-earth) | 10 kA (in total) |
| Nominal pulse current I_{an} (10/1000) μ s (line-earth) | 100 A |
| Output voltage limitation at 1 kV/ μ s (line-earth) spike | ≤ 28 V |
| Output voltage limitation at 1 kV/ μ s (line-earth) static | ≤ 22 V |
| Residual voltage at I_n (line-earth) | ≤ 32 V |
| Residual voltage with I_{an} (10/1000) μ s (line-earth) | ≤ 18 V |
| Voltage protection level U_p (line-earth) | ≤ 60 V (C2 - 10 kV/5 kA, spike) |
| | ≤ 30 V (C3 - 7.5 kV / 100 A, spike) |
| Response time t_A (line-earth) | ≤ 1 ns |
| Input attenuation aE, asym. | 0.3 dB (≤ 400 kHz) |

Surge protection plug - CTM 2X1- 12DC - 2838584

Technical data

Protective circuit

| | |
|--|---------------------------------|
| Cut-off frequency f_g (3 dB), asym. (PE) in 100 Ohm system | 1.5 MHz |
| Capacity (line-earth) | 1.5 nF ($f=1$ MHz / $V_R=0$ V) |
| Resistance in series | 3.3 Ω 10 % |
| Surge protection fault message | none |
| Impulse durability (line-earth) | C2 - 4 kV / 2 kA |
| | C3 - 100 A |
| | B2 - 4 kV / 100 A |
| | D1 - 1 kA |
| Alternating current carrying capacity (line-earth) | 5 A - 1 s |

Connection data

| | |
|-----------------------|---|
| Connection method | can be plugged into COMTRAB-TERMIBLOCK and LSA-PLUS disconnect and switching strips |
| Connection method IN | COMTRAB plug-in system |
| Connection method OUT | COMTRAB plug-in system |
| Connection technology | LSA-PLUS |

Connection, equipotential bonding

| | |
|-------------------|----------------|
| Connection method | Spring contact |
|-------------------|----------------|

Standards and Regulations

| | |
|--------------------------|-------------------|
| Standards/regulations | IEC 61643-21 |
| Standards/specifications | IEC 61643-21 2000 |

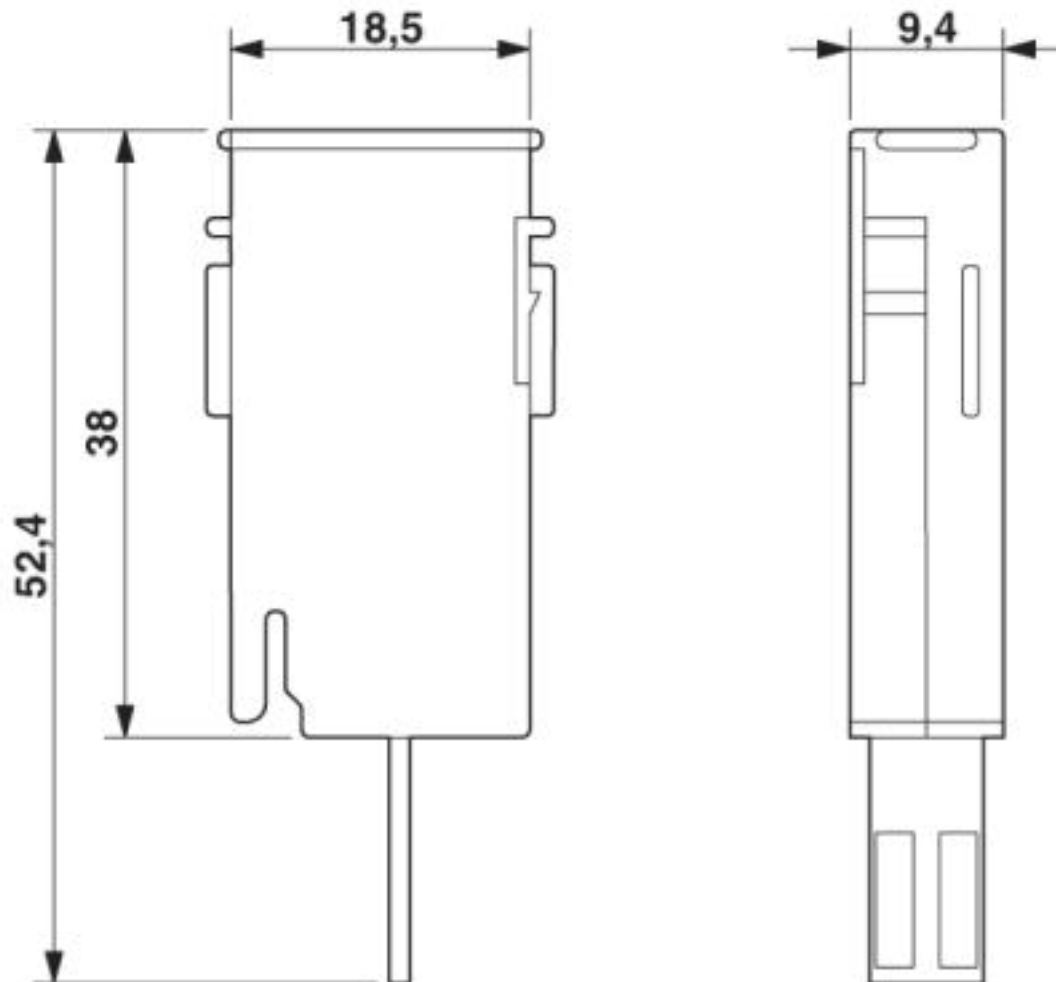
Environmental Product Compliance

| | |
|------------|---|
| | Lead 7439-92-1 |
| China RoHS | Environmentally friendly use period: unlimited = EFUP-e |
| | No hazardous substances above threshold values |

Drawings

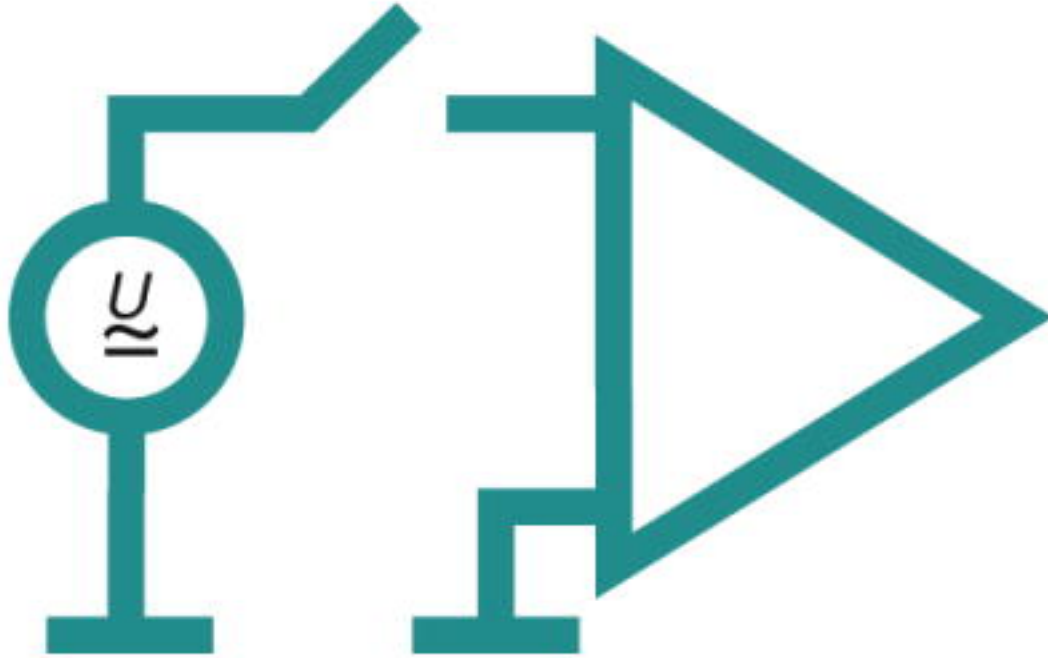
Surge protection plug - CTM 2X1- 12DC - 2838584

Dimensional drawing

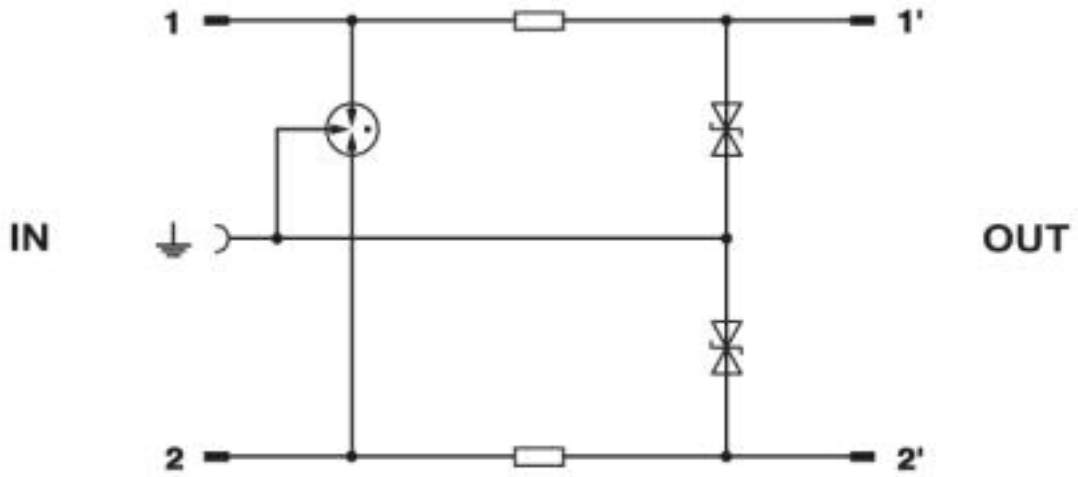


Surge protection plug - CTM 2X1- 12DC - 2838584

Pictogram



Circuit diagram



Approvals

Approvals

Approvals

UL Listed / EAC

Surge protection plug - CTM 2X1- 12DC - 2838584

Approvals

Ex Approvals

Approval details

UL Listed



<http://database.ul.com/cgi-bin/XYV/template/LISEXT/1FRAME/index.htm>

FILE E 138168

EAC



RU C-
DE.A*30.B01561

Phoenix Contact 2019 © - all rights reserved
<http://www.phoenixcontact.com>

PHOENIX CONTACT GmbH & Co. KG
Flachsmarktstr. 8
32825 Blomberg
Germany
Tel. +49 5235 300
Fax +49 5235 3 41200
<http://www.phoenixcontact.com>