

6

5

4

3

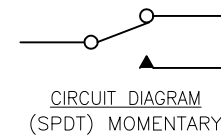
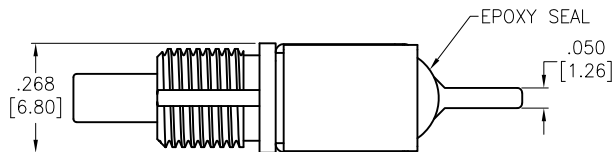
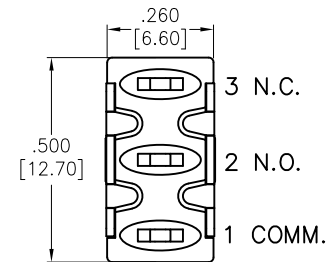
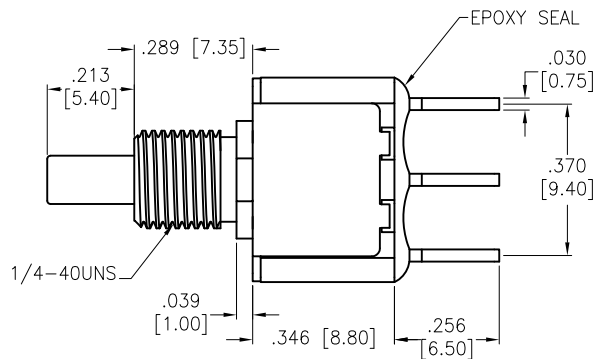
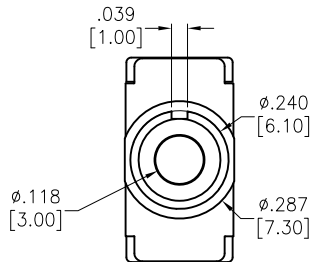
2

1

APPROVED: \_\_\_\_\_

DATE: \_\_\_\_\_ TITLE: \_\_\_\_\_

|     |       |             |        |      |
|-----|-------|-------------|--------|------|
| Rev | AWO # | Description | Date   | Appr |
| -   |       | RELEASED    | 2/8/21 |      |



SPECIFICATIONS:

Material:

Movable Contact: Copper Alloy, Silver Plated

Terminal: Copper Alloy, Silver Plated

Electrical:

Voltage rating: 120VAC or 38VDC

Current rating: 1 Amps

Contact resistance: 10 mΩ max

Insulation resistance: 1,000 Mohms min

Dielectric withstanding voltage: 1,500V RMS @Sea level

Temperature Rating:

Operating temperature: -30°C to +85°C

Environmental:

Lead free, RoHS compliant



UNLESS OTHERWISE SPECIFIED  
ALL DIMENSIONS ARE INCHES [MM]  
TOLERANCES: EXCEPT AS NOTED

| INCHES |        | HOLES |        |
|--------|--------|-------|--------|
| .X     | ± .10  | Ø.X   | ± .10  |
| .XX    | ± .020 | Ø.XX  | ± .015 |
| .XXX   | ± .015 | Ø.XXX | ± .010 |



909 Rahway Avenue,  
Union, NJ 07083  
Phone: 908-687-5000  
Fax: 908-687-5710

TITLE  
SNAP-ACTING PUSHBUTTON SWITCH,  
SPDT, ON-MOMENTARY, SILVER PLATED, PCB TYPE

| APPROVALS |    | DATE   |
|-----------|----|--------|
| DRAWN     | LH | 2/8/21 |
| CHECKED   | AC | 2/8/21 |
| APPROVED  |    |        |

|              |                               |              |
|--------------|-------------------------------|--------------|
| SIZE<br>X    | PART NO.<br>SW-PB8-AB00A2QE-1 | REV.<br>-    |
| REF: S00198T | SCALE: NTS                    | SHEET 1 OF 1 |

6

5

4

3

2

1