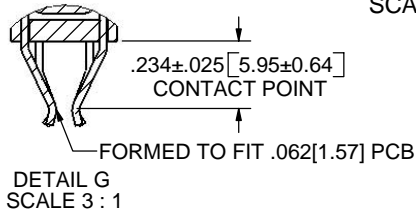
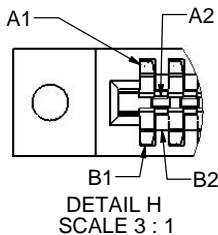
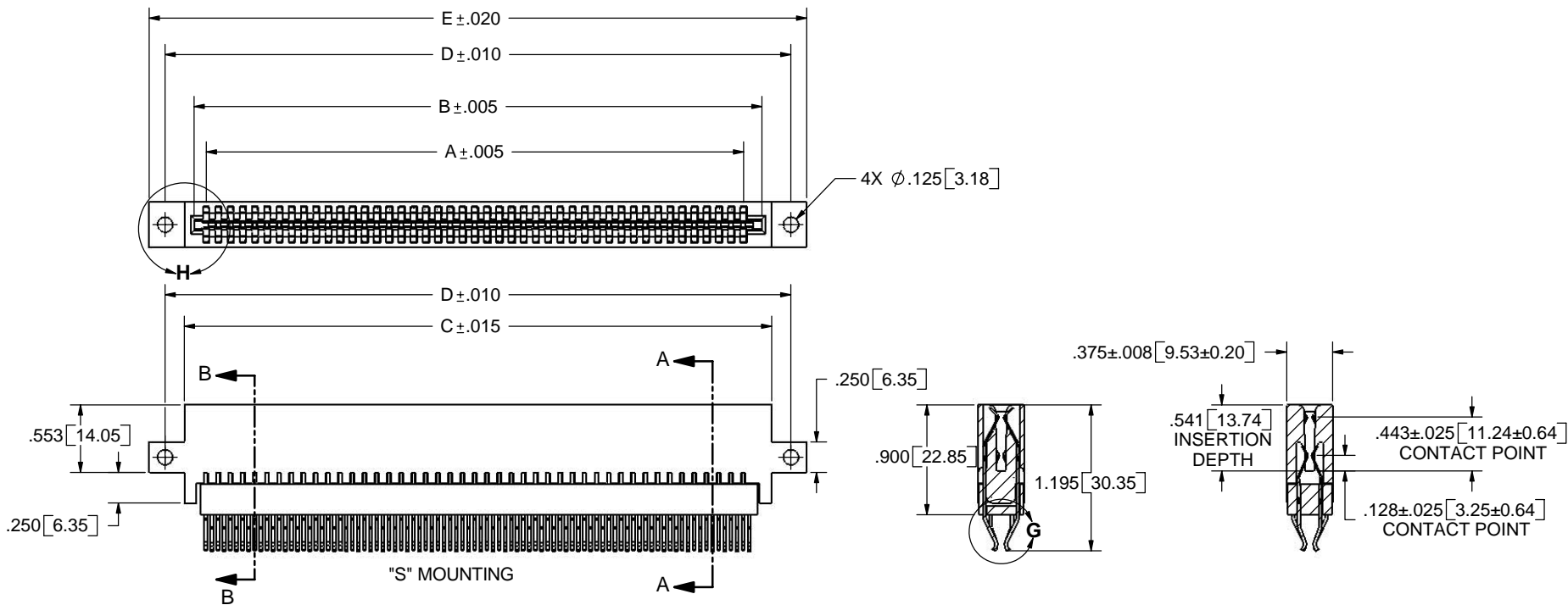


REVISIONS				
REV.	ECO. NO	DESCRIPTION	DATE	BY
A	1096	ORIGINAL RELEASE	7-19-06	MNH



- NOTES:
1. INSULATOR MATERIAL: PPS
 2. CONTACT MATERIAL: BERYLLIUM COPPER
 3. PLATING: SEE PART NUMBER CODING
 4. OPERATING TEMPERATURE: -65°C TO $+150^{\circ}\text{C}$
 5. PROCESSING TEMP: 260°C FOR 120 SECONDS MAX
 6. UL FLAMMABILITY RATING: 94V-0
 7. VOLTAGE RATING: 125 VDC MINIMUM AT SEA LEVEL.
 8. CURRENT RATING: 3 AMP PER CONTACT PAIR
 9. INSULATION RESISTANCE: 5000 MEGA OHM
 10. CONTACT RESISTANCE: 30 MV AT RATED CURRENT
 11. CONNECTOR IDENTIFICATION: THE PART SHALL BE MARKED WITH A PART NUMBER AND BARCODE
 12. BOARD THICKNESS ACCOMMODATED: $.062 \pm .008"$
 13. BOARD INSERTION FORCE: 16 OZ MAX PER CONTACT PAIR WHEN USING A $.062"$ TEST BLADE. INTERNAL INSPECTION TO BE PER SULLIN'S WORK INSTRUCTION W17.3-01.
 14. BOARD WITHDRAWAL FORCE: 1 OUNCE MINIMUM PER CONTACT PAIR USING $.062"$ PCB
 15. CONTACT NORMAL FORCE: 75 GRAMS MINIMUM.

DIMENSIONS ARE SUBJECT TO CHANGE AS DEVELOPMENT PROGRESSES

PRELIMINARY PROPRIETARY CONFIDENTIAL

CUSTOMER COPY

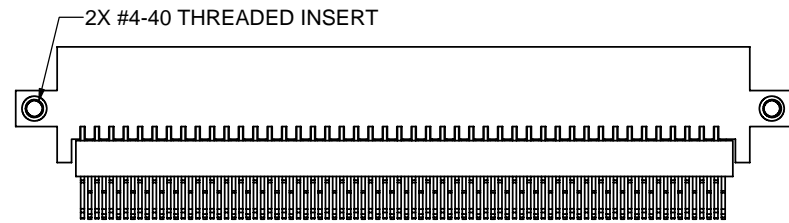


RoHS COMPLIANT

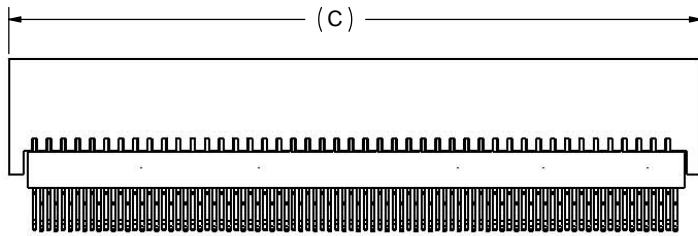
UNLESS OTHERWISE SPECIFIED:
 DIMENSIONS ARE IN INCHES[MM]
 TOLERANCES:
 ANGULAR: $\pm 1^{\circ}$
 XX = $\pm .02 [508]$
 .XXX = $\pm .005 [1270]$
 .XXXX = $\pm .0005 [0127]$
 PARENTHETICAL INFORMATION IS FOR REFERENCE ONLY

INTERPRET DIMENSIONS AND GEOMETRIC TOLERANCING PER: ANSI Y14.5-1984

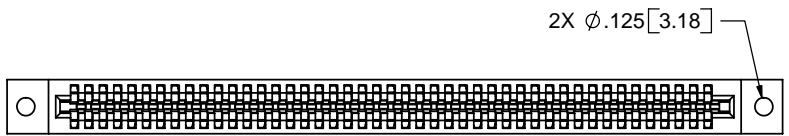
DATE	NAME	SULLINS ELECTRONICS	
07-19-06	MNH	BI-LEVEL, .050" CC	
DRAWN		DESCRIPTION	
THE INFORMATION HEREIN CONTAINS PROPRIETARY INFORMATION OF SULLINS ELECTRONICS AND IS NOT TO BE REPRODUCED, USED OR DISCLOSED TO OTHERS FOR ANY PURPOSE EXCEPT AS SPECIFICALLY AUTHORIZED IN WRITING BY AN OFFICER OF SULLINS ELECTRONICS.		PART NUMBER	
SIZE		REV	
C		A	
DWG. NO		SCALE: 1:1	
C10790		SHEET 1 OF 3	



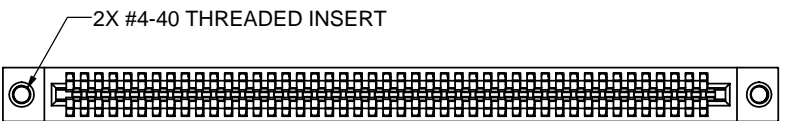
"A" MOUNTING
#4-40 THREADED INSERT IN SIDE HOLES



"N" MOUNTING
NO MOUNTING EARS



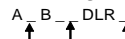
"H" MOUNTING
Ø.125 CLEARANCE HOLES



"I" MOUNTING
#4-40 THREADED INSERT

	INCHES						MILLIMETERS						POSITIONS	DAUGHTER CARD LAYOUT	
	A	B	C	D	E	F	A	B	C	D	E	F			POSITIONS
A_B06DLR	0.200	0.450	0.610	0.925	1.185	0.436	6	5.08	11.43	15.49	23.50	30.10	11.07	6	1
A_B08DLR	0.300	0.550	0.710	1.025	1.285	0.536	8	7.62	13.97	18.03	26.04	32.64	13.61	8	2
A_B10DLR	0.400	0.650	0.810	1.125	1.385	0.636	10	10.16	16.51	20.57	28.58	35.18	16.15	10	1
A_B12DLR	0.500	0.750	0.910	1.225	1.485	0.736	12	12.70	19.05	23.11	31.12	37.72	18.69	12	2
A_B14DLR	0.600	0.850	1.010	1.325	1.585	0.836	14	15.24	21.59	25.65	33.66	40.26	21.23	14	1
A_B16DLR	0.700	0.950	1.110	1.425	1.685	0.936	16	17.78	24.13	28.19	36.20	42.80	23.77	16	2
A_B18DLR	0.800	1.050	1.210	1.525	1.785	1.036	18	20.32	26.67	30.73	38.74	45.34	26.31	18	1
A_B20DLR	0.900	1.150	1.310	1.625	1.885	1.136	20	22.86	29.21	33.27	41.28	47.88	28.85	20	2
A_B22DLR	1.000	1.250	1.410	1.725	1.985	1.236	22	25.40	31.75	35.81	43.82	50.42	31.39	22	1
A_B24DLR	1.100	1.350	1.510	1.825	2.085	1.336	24	27.94	34.29	38.35	46.36	52.96	33.93	24	2
A_B26DLR	1.200	1.450	1.610	1.925	2.185	1.436	26	30.48	36.83	40.89	48.90	55.50	36.47	26	1
A_B28DLR	1.300	1.550	1.710	2.025	2.285	1.536	28	33.02	39.37	43.43	51.44	58.04	39.01	28	2
A_B30DLR	1.400	1.650	1.810	2.125	2.385	1.636	30	35.56	41.91	45.97	53.98	60.58	41.55	30	1
A_B32DLR	1.500	1.750	1.910	2.225	2.485	1.736	32	38.10	44.45	48.51	56.52	63.12	44.09	32	2
A_B34DLR	1.600	1.850	2.010	2.325	2.585	1.836	34	40.64	46.99	51.05	59.06	65.66	46.63	34	1
A_B36DLR	1.700	1.950	2.110	2.425	2.685	1.936	36	43.18	49.53	53.59	61.60	68.20	49.17	36	2
A_B38DLR	1.800	2.050	2.210	2.525	2.785	2.036	38	45.72	52.07	56.13	64.14	70.74	51.71	38	1
A_B40DLR	1.900	2.150	2.310	2.625	2.885	2.136	40	48.26	54.61	58.67	66.68	73.28	54.25	40	2
A_B42DLR	2.000	2.250	2.410	2.725	2.985	2.236	42	50.80	57.15	61.21	69.22	75.82	56.79	42	1
A_B44DLR	2.100	2.350	2.510	2.825	3.085	2.336	44	53.34	59.69	63.75	71.76	78.36	59.33	44	2
A_B46DLR	2.200	2.450	2.610	2.925	3.185	2.436	46	55.88	62.23	66.29	74.30	80.90	61.87	46	1
A_B48DLR	2.300	2.550	2.710	3.025	3.285	2.536	48	58.42	64.77	68.83	76.84	83.44	64.41	48	2
A_B50DLR	2.400	2.650	2.810	3.125	3.385	2.636	50	60.96	67.31	71.37	79.38	85.98	66.95	50	1
A_B52DLR	2.500	2.750	2.910	3.225	3.485	2.736	52	63.50	69.85	73.91	81.92	88.52	69.49	52	2
A_B54DLR	2.600	2.850	3.010	3.325	3.585	2.836	54	66.04	72.39	76.45	84.46	91.06	72.03	54	1
A_B56DLR	2.700	2.950	3.110	3.425	3.685	2.936	56	68.58	74.93	78.99	87.00	93.60	74.57	56	2
A_B58DLR	2.800	3.050	3.210	3.525	3.785	3.036	58	71.12	77.47	81.53	89.54	96.14	77.11	58	1
A_B60DLR	2.900	3.150	3.310	3.625	3.885	3.136	60	73.66	80.01	84.07	92.08	98.68	79.65	60	2
A_B62DLR	3.000	3.250	3.410	3.725	3.985	3.236	62	76.20	82.55	86.61	94.62	101.22	82.19	62	1
A_B64DLR	3.100	3.350	3.510	3.825	4.085	3.336	64	78.74	85.09	89.15	97.16	103.76	84.73	64	2
A_B66DLR	3.200	3.450	3.610	3.925	4.185	3.436	66	81.28	87.63	91.69	99.70	106.30	87.27	66	1
A_B68DLR	3.300	3.550	3.710	4.025	4.285	3.536	68	83.82	90.17	94.23	102.24	108.84	89.81	68	2
A_B70DLR	3.400	3.650	3.810	4.125	4.385	3.636	70	86.36	92.71	96.77	104.78	111.38	92.35	70	1
A_B72DLR	3.500	3.750	3.910	4.225	4.485	3.736	72	88.90	95.25	99.31	107.32	113.92	94.89	72	2
A_B74DLR	3.600	3.850	4.010	4.325	4.585	3.836	74	91.44	97.79	101.85	109.86	116.46	97.43	74	1
A_B76DLR	3.700	3.950	4.110	4.425	4.685	3.936	76	93.98	100.33	104.39	112.40	119.00	99.97	76	2
A_B78DLR	3.800	4.050	4.210	4.525	4.785	4.036	78	96.52	102.87	106.93	114.94	121.54	102.51	78	1
A_B80DLR	3.900	4.150	4.310	4.625	4.885	4.136	80	99.06	105.41	109.47	117.48	124.08	105.05	80	2
A_B82DLR	4.000	4.250	4.410	4.725	4.985	4.236	82	101.60	107.95	112.01	120.02	126.62	107.59	82	1
A_B84DLR	4.100	4.350	4.510	4.825	5.085	4.336	84	104.14	110.49	114.55	122.56	129.16	110.13	84	2
A_B86DLR	4.200	4.450	4.610	4.925	5.185	4.436	86	106.68	113.03	117.09	125.10	131.70	112.67	86	1
A_B88DLR	4.300	4.550	4.710	5.025	5.285	4.536	88	109.22	115.57	119.63	127.64	134.24	115.21	88	2
A_B90DLR	4.400	4.650	4.810	5.125	5.385	4.636	90	111.76	118.11	122.17	130.18	136.78	117.75	90	1
A_B92DLR	4.500	4.750	4.910	5.225	5.485	4.736	92	114.30	120.65	124.71	132.72	139.32	120.29	92	2
A_B94DLR	4.600	4.850	5.010	5.325	5.585	4.836	94	116.84	123.19	127.25	135.26	141.86	122.83	94	1
A_B96DLR	4.700	4.950	5.110	5.425	5.685	4.936	96	119.38	125.73	129.79	137.80	144.40	125.37	96	2
A_B98DLR	4.800	5.050	5.210	5.525	5.785	5.036	98	121.92	128.27	132.33	140.34	146.94	127.91	98	1
A_B100DLR	4.900	5.150	5.310	5.625	5.885	5.136	100	124.46	130.81	134.87	142.88	149.48	130.45	100	2

PART NUMBER CODING



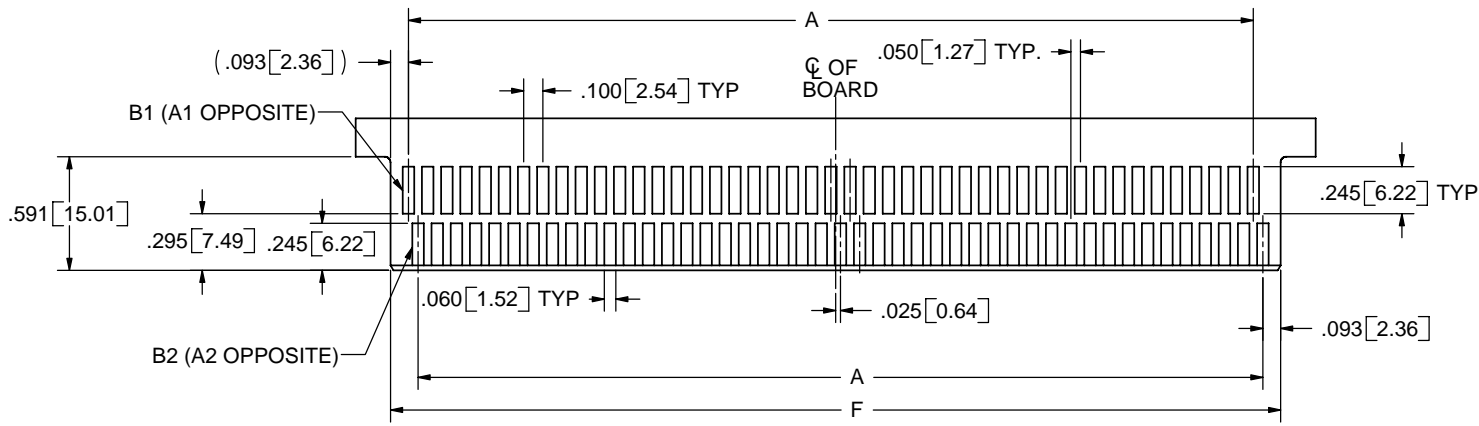
- MOUNTING STYLE**
 - H = .125 DIA. CLEARANCE HOLES
 - I = #4-40 THREADED INSERT
 - S = .125 DIA. SIDE MOUNTING (PAGE 1)
 - N = NO MOUNTING EARS
 - A = #4-40 THRD INS SIDE HOLES
- NUMBER OF POSITIONS**
- PLATING**
 - ALL PLATING HAVE .000050" NICKEL UNDERPLATE
 - CONTACT TERMINATION
 - Y = .000030" GOLD .000005" GOLD
 - B = .000010" GOLD .000100" PURE TIN, MATTE
 - C = .000030" GOLD .000100" PURE TIN, MATTE

= LEAD FREE \RoHS COMPLIANT

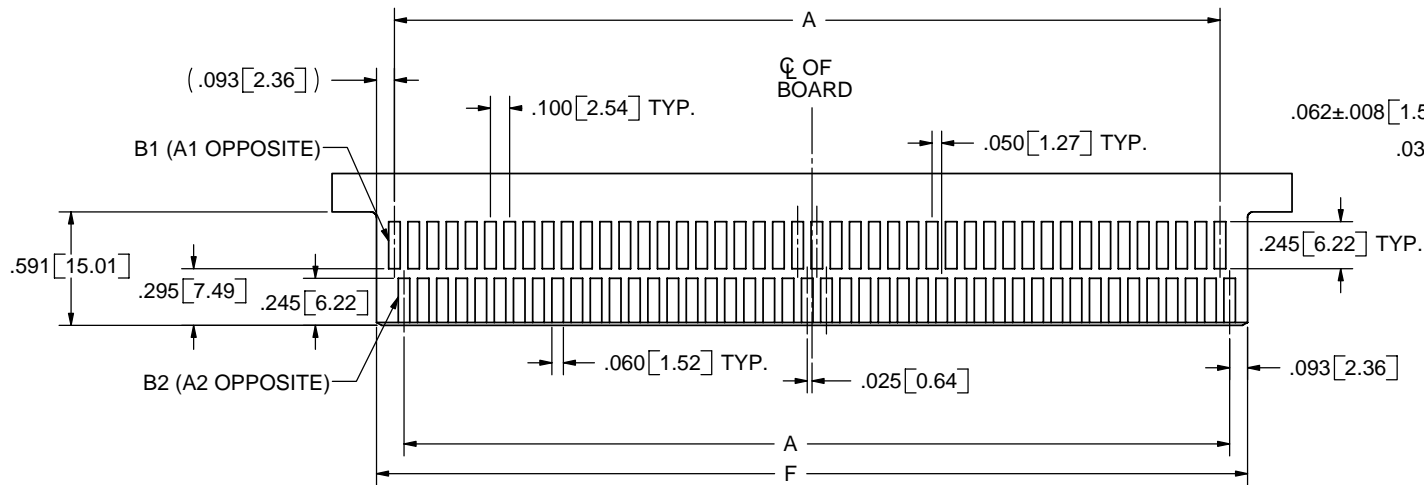
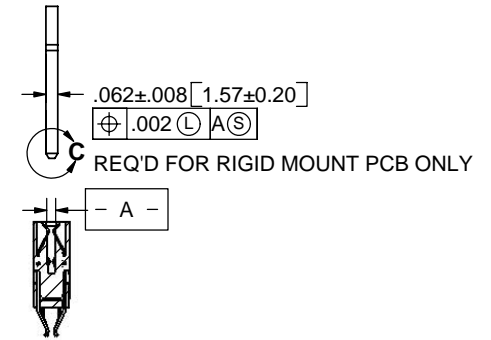
**PRELIMINARY
PROPRIETARY
CONFIDENTIAL**

CUSTOMER COPY

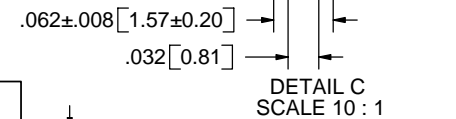
UNLESS OTHERWISE SPECIFIED: DIMENSIONS ARE IN INCHES[MM]		DATE	NAME
TOLERANCES: ANGULAR: ± 1° XX = ± .02 [.508] .XXX = ± .005 [.127] XXXX = ± .0005 [.0127] PARENTHETICAL INFORMATION IS FOR REFERENCE ONLY		07-19-06	MNH
INTERPRET DIMENSIONS AND GEOMETRIC TOLERANCING PER: ANSI Y14.5-1984		THE INFORMATION HEREIN CONTAINS PROPRIETARY RIGHTS OF SULLINS ELECTRONICS AND IS NOT TO BE REPRODUCED, USED OR DISCLOSED TO OTHERS FOR ANY PURPOSE EXCEPT AS SPECIFICALLY AUTHORIZED IN WRITING BY SULLINS ELECTRONICS.	
SULLINS ELECTRONICS		DESCRIPTION	
BI-LEVEL, .050" CC		PART NO. :A_B_DLR	
SIZE	DWG. NO	REV	
C	C10790	A	
SCALE: 1:0.666667		SHEET 2 OF 3	



DAUGHTER CARD LAYOUT NUMBER 1
90 POSITION SHOWN
REFER TO PAGE 2 TO DETERMINE LAYOUT TO USE



DAUGHTER CARD LAYOUT NUMBER 2
88 POSITION SHOWN
REFER TO PAGE 2 TO DETERMINE LAYOUT TO USE



**PRELIMINARY
PROPRIETARY
CONFIDENTIAL**

CUSTOMER COPY

UNLESS OTHERWISE SPECIFIED: DIMENSIONS ARE IN INCHES[MM]		DATE	NAME
TOLERANCES: ANGULAR: ± 1° XX = ± .02 [.508] .XXX = ± .005 [.1270] XXXX = ± .0005 [.0127] PARENTHETICAL INFORMATION IS FOR REFERENCE ONLY		07-19-06	MNH
INTERPRET DIMENSIONS AND GEOMETRIC TOLERANCING PER: ANSI Y14.5-1984		THE INFORMATION HEREIN CONTAINS PROPRIETARY RIGHTS OF SULLINS ELECTRONICS AND IS NOT TO BE REPRODUCED, USED OR DISCLOSED TO OTHERS FOR ANY PURPOSE EXCEPT AS SPECIFICALLY AUTHORIZED IN WRITING BY SULLINS ELECTRONICS.	
		SULLINS ELECTRONICS DESCRIPTION BI-LEVEL, .050" CC	
PART NO.: A_B_DLR		SIZE	DWG. NO.
SCALE: 2:1		C	C10790
SHEET 3 OF 3		REV	A