

ITEM	PART#	DESCRIPTION	QTY	UOM
A	9508100	KK 156 Crimp Housing 10 Ckt	1	PC
B	8500105	KK 156 TERMINAL CRIMP 18-24 AWG TIN	10	PC
C		PAPER PRINTED PAPER WHITE	1	PC

FROM	TO	DESCRIPTION	COLOR
A1	--	1X18AWG MPPE BK UL11028	BLACK
A2	--	1X18AWG MPPE BK UL11028	BLACK
A3	--	1X18AWG MPPE BK UL11028	BLACK
A4	--	1X18AWG MPPE BK UL11028	BLACK
A5	--	1X18AWG MPPE BK UL11028	BLACK
A6	--	1X18AWG MPPE BK UL11028	BLACK
A7	--	1X18AWG MPPE BK UL11028	BLACK
A8	--	1X18AWG MPPE BK UL11028	BLACK
A9	--	1X18AWG MPPE BK UL11028	BLACK
A10	--	1X18AWG MPPE BK UL11028	BLACK

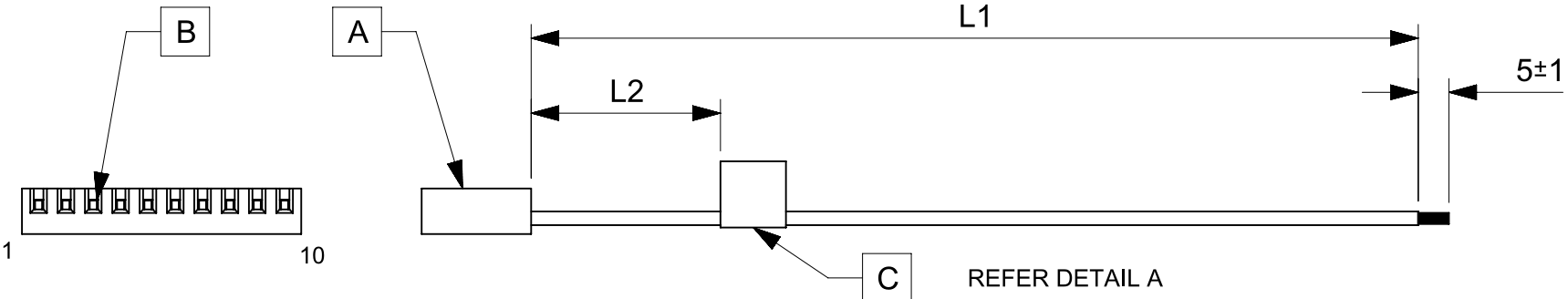


TABLE			
PART NUMBER	L1	L2 (REF)	TITLE
2196651102	150±4	50	KK 3.96 R-S 10ckt 150mm disc Sn
2196651103	300±4	50	KK 3.96 R-S 10ckt 300mm disc Sn
2196651104	600±6	50	KK 3.96 R-S 10ckt 600mm disc Sn

- NOTES**
- Connector view shown is from mating side.
  - Label text must be 2mm max. in height with Arial font.
  - Label must be wrapped in Flag type on a single cable.
  - Free ends must be stripped, twisted & tinned. The length of tinning is 5±1mm. Tinning Dia must be 1.6 mm Max.

MOLEX P/N  
MOLEX  
BATCH WK/YR

DETAIL A

REVISION			
DATE	REV	DESCRIPTION	CHANGER
2021/12/27	A	INITIAL RELEASE	SAIKIG

FUNCTIONAL SYMBOLS $\frac{E}{A} = 0$ $\frac{E}{E} = 0$ $\frac{E}{P} = 0$ DIVISIONAL SYMBOLS	THIS DRAWING CONTAINS INFORMATION THAT IS PROPRIETARY TO MOLEX ELECTRONIC TECHNOLOGIES, LLC AND SHOULD NOT BE USED WITHOUT WRITTEN PERMISSION		CURRENT REV DESC:			
	DIMENSION UNITS	SCALE	GENERAL TOLERANCES (UNLESS SPECIFIED)			
	mm	NTS	ANGULAR TOL ± °			
	4 PLACES ±	3 PLACES ±	EC NO: 691733			
3 PLACES ±	2 PLACES ±	DRWN: SAIKIG 2021/12/29		PRODUCT CUSTOMER DRAWING DOCUMENT NUMBER: 2196651102 DOC TYPE: PSD DOC PART: 000 REVISION: A		
1 PLACE ±	0 PLACES ±	CHK'D: MNARAYAN01 2022/01/19				
DRAFT WHERE APPLICABLE MUST REMAIN WITHIN DIMENSIONS		APPR: MNARAYAN01 2022/01/19				
THIRD ANGLE PROJECTION		DRAWING	SERIES	MATERIAL NUMBER	CUSTOMER	SHEET NUMBER
		A4-SIZE	219665	SEE TABLE	GENERAL MARKET	1 OF 1