

RAMO 22 S, M12, round collar, 1 NO, Gold, M12 4-pin A-coded, frontring black, 1 x 90°, shape V, latching


NEW


fields of application

- › Measurement-control-regulation
- › Electrical engineering
- › Mechanical and system engineering
- › Signalling systems
- › Vehicle construction
- › Chemical industry
- › Industrial robots

special features

- › Precise haptics
- › Safe gold contacts
- › Simple M12 plug&play connection
- › Protected contacts due to sealed housing



description

Selector switch with various switching positions and M12 terminal

technical data

› general

illuminated	Yes
Color	black
Bezel color	white
Collar color	black
Front ring color	black
Luminous element color	white
Collar shape	round
Operating temperature, min.	-25 °C
Operating temperature, max.	70 °C
Storage temperature, min.	-40 °C
Storage temperature, max.	90 °C
Luminous elements	LED
Shock resistance according to standard IEC 60068-2-27	30 g at 11 ms amplitude semi-sinusoidal
Packaging	Box
Packaging unit	2 pcs.
Environment resistance	IEC 60068-2-14 IEC 60068-2-30 IEC 60068-2-78
Operating life	200,000 Cycles
B10	250,000 Cycles
Degree of protection, front side, according to DIN EN 60529	IP65

direct links

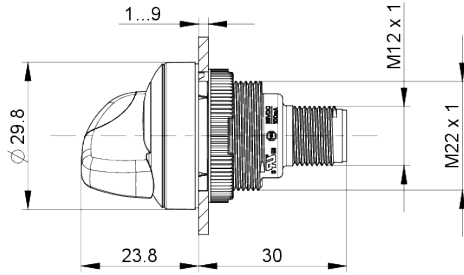
- › [RAFI eCatalog](#)

1.10.021.204/0221

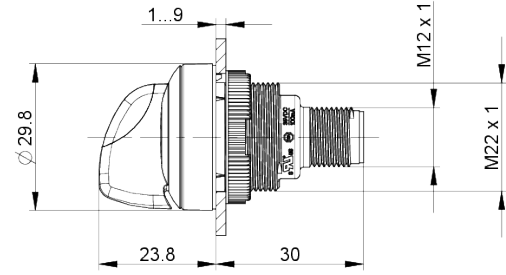
Degree of protection, rear side, according to DIN EN 60529	IP65
Salt-spray resistance according to standard	IEC 60068-2-11
RoHS compliant	Yes
REACH compliant	Yes
Potential free	yes
oscillation resistance according to standard IEC 60068-2-6	5 g at 10...500 Hz
> mounting diameters	
Mounting hole	22.3 mm
Mounting depth	30.05 mm
Installation height	23.83 mm
Outside dimension, length	29.8 mm
Outside dimension, width	29.8 mm
Outside dimension, height	53.88 mm
> mechanical data	
Actuation function	latching
Contact function	1 NO
Contact material	Gold
Rotating angle	1 x 90°, shape V
Fixing	Threaded ring
Terminal on the rear	M12 4-pin A-coded
PIN 1	Normally open contact 1
PIN 2	LED +
PIN 3	GND
PIN 4	Normally open contact 1
> electrical data	
Operating voltage of the luminous element, min.	22 V
Operating voltage of the luminous element, max.	26 V
Operating current of the luminous element, max.	25 mA
Rated voltage, min.	10 V
Rated voltage, max.	32 V
Rated current, max.	0.1 A

drawings

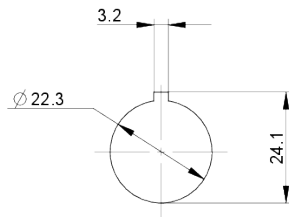
Dimensioned drawing



Dimensioned drawing



Mounting hole drawing



Schematic diagram

