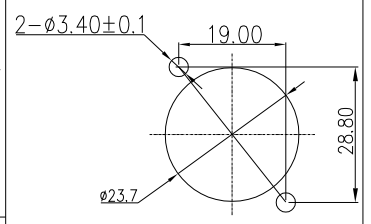
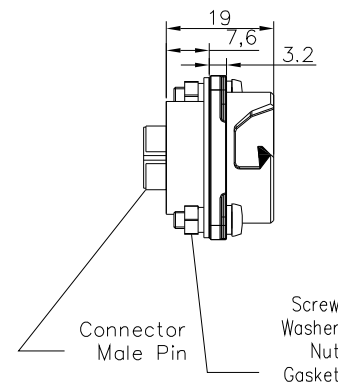
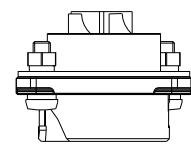
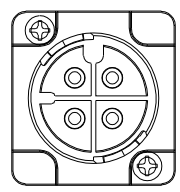


REV.	ECN NO.	DESCRIPTION	SIGN	DATE
C1	N/A	INITIAL DRAWING	Liu	2020/05/19



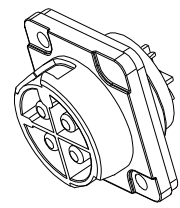
RECOMMENDED PANEL Cut-Out



- Specification:
- 1.Operation Temperature: -45°C~105°C.
 - 2.Insulation Resistance:100MΩ at DC500V.
 - 3.Contact Resistance:<10mΩ.
 - 4.Withstand Voltage: 2000V AC
 - 5.Operating Current:50A
 - 6.Operating Voltage: AC 300V
 - 7.Waterproof Rate:IP67 (Mated)
 - 8.Housing:Nylon, Black
 - 9.Male Pin:Copper Alloy, Gold Plated
 - 10.Gasket: Silicon Gray
 - 11.RoHS Compliant.
 - 12.Mating Cap P/N:806-00058-00

22XXX536-0X
Pin Number

4 Pin	3 Pin
P/N: 24004536-01	P/N: 24003536-02
Pin Assignments Front View	



CHOGORI®

UNIT:mm	DESCRIPTION Large Series Push Lock Female socket With Male Pin	PART NO 24XXX536-0X	DRAWN BY Liu	DATE 2020/05/19
TOLERANCE .X ±0.25 .XX ±0.15 .XXX ±0.05 ANGLES ±1°	SCALE 1:1 SHEET 1 OF 1	DWG NO	CHECKED BY Mo	DATE 2020/05/19
REV. C1	SIZE A4 * :Inspection Item	CUSTOMER	APPROVED BY Adley	DATE 2020/05/19

THIS INFORMATION IS CONFIDENTIAL AND IS DISCLOSED TO YOU ON CONDITION THAT NO FURTHER DISCLOSURE IS MADE BY YOU TO OTHER THAN CHOGORI PERSONNEL WITHOUT AUTHORIZATION FROM CHOGORI CORP.