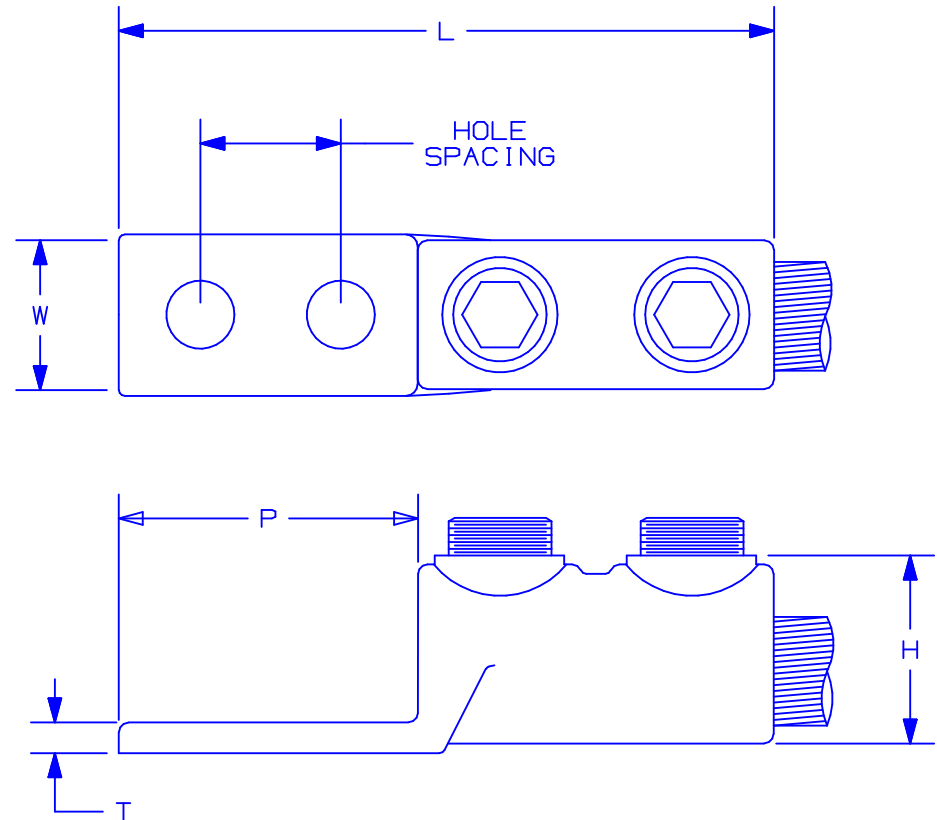


PART NUMBER	COPPER CONDUCTOR SIZE RANGE	STUD HOLE SIZE (IN.)	STUD HOLE SPACING (IN.)	HEX KEY SIZE (IN.)	FIGURE DIMENSIONS (IN.)					TIGHTENING TORQUE (IN.-LBS.)	STD. PKG. QTY.
					L	W	H	T	P		
HHL8-2N-X	#4 SOL- #1 STR	1/2	1.75	7/16	5.13	1.00	.80	.22	3.00	100	10
HHL13-2N-5	#1 STR- 2/0 STR	1/2	1.75	9/16	4.88	1.25	1.00	.22	3.00	250	5
HHL21-2N-5	2/0 STR- 4/0 STR	1/2	1.75	9/16	5.63	1.50	1.37	.25	3.00	250	5
HHL30-2N-1	4/0 STR- 300 kcmil	1/2	1.75	5/8	5.88	1.50	1.45	.31	3.00	350	1

NOTES:

1. CAST FROM HIGH STRENGTH CORROSION RESISTANT COPPER ALLOY TO PROVIDE PREMIUM ELECTRICAL AND MECHANICAL PERFORMANCE.
2. DOUBLE SET SCREWS PROVIDE ADDITIONAL WIRE SECURENESS FOR USE IN HEAVY DUTY APPLICATIONS.
3. WIRE RANGE TAKING CAPABILITY MINIMIZES INVENTORY REQUIREMENTS.
4. INTERNAL PRESSURE PLATE PROVIDES UNIFORM CLAMPING FORCE ON CONDUCTOR FOR PREMIUM ELECTRICAL PERFORMANCE.
5. INTERNAL BARREL SERRATIONS ALLOW FOR PREMIUM WIRE PULL-OUT STRENGTH.
6. INSPECTION WINDOW TO VISUALLY ASSURE FULL CONDUCTOR INSERTION.
7. FLAT BOTTOM ALLOWS FOR COMPLETE CONTACT WITH MOUNTING SURFACE.
8. UL LISTED FOR USE UP TO 600V AND TEMPERATURE RATED 90° C.



C41438\_00

00	9/04	JHNU		DRAWING RELEASED					
REV	DATE	BY	CHK	DESCRIPTION	ECN #	PM	CUST		

**PANDUIT**

CORP.

TINLEY PARK, ILLINOIS

TWO-HOLE, STRAIGHT TONGUE,  
TANDEM SET SCREW LUG  
CUSTOMER DRAWING

DRAWN BY JHNU	CHK'D	SCALE N/A	DRAWING NO. C41438
------------------	-------	--------------	-----------------------