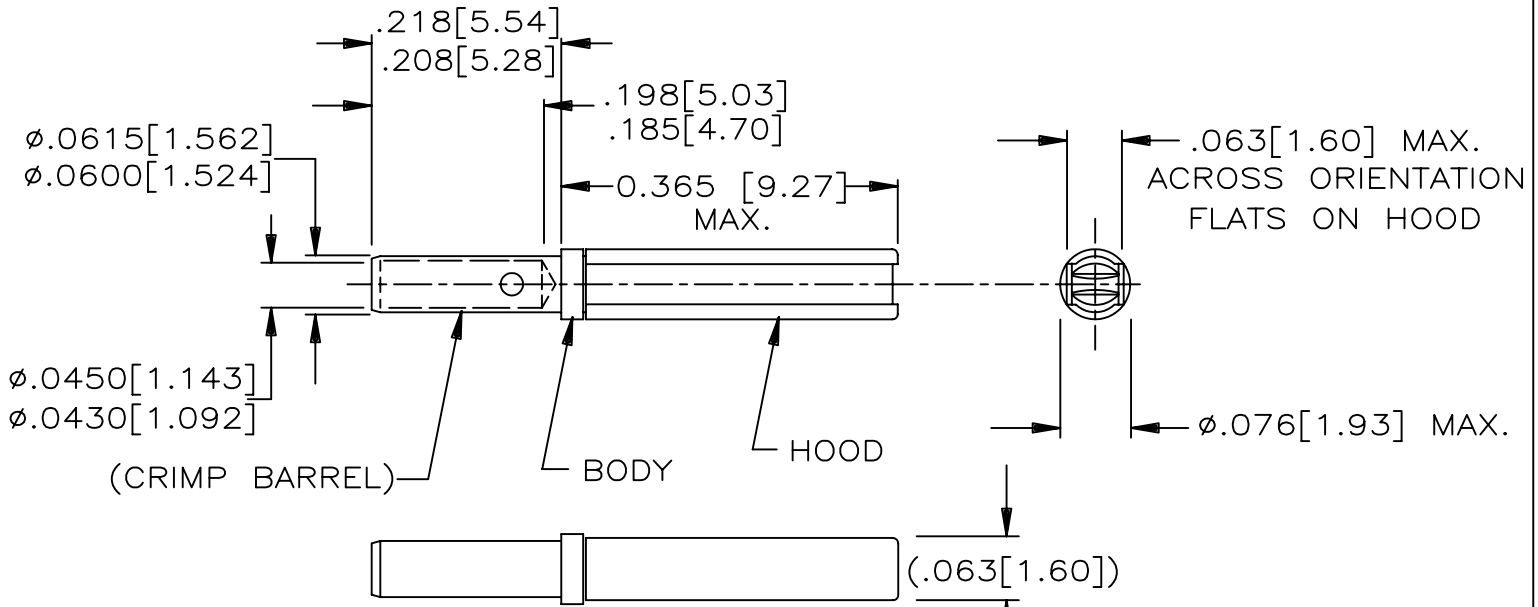


| REVISION |                                  |           |          |
|----------|----------------------------------|-----------|----------|
| REV      | DESCRIPTION                      | DATE      | APPROVED |
| C        | REVISED PER DCR# T-32208         | NOV/20/03 | M.HIGGY  |
| D        | REDRAWN, REVISE PER DCR# C060663 | AUG/10/06 | M.HIGGY  |

NOTE:

- THIS CONTACT IS DESIGNED TO MEET THE APPLICABLE REQUIREMENTS OF RAYCHEM SPECIFICATION C-6114 AND C-6115.
- MATERIAL:  
BODY: COPPER ALLOY CDA C19160 (BOILLAT C97), TESTED PER ASTM B 249.  
HOOD: STAINLESS STEEL 305, PER ASTM A 240.
- FINISH:  
BODY: GOLD PLATE PER ASTM B 488, CLASS 1  
HOOD: PASSIVATED PER SAE AMS 2700.
- CRIMP TOOL RECOMMENDATION:  
A: TOOL NUMBER M22520/2-01  
B: POSITIONER NUMBER CTA-0147 (DANIELS #K818)
- THIS CONTACT MATES WITH TYCO PIN CONTACT NUMBER CTA-0093
- CRIMP BARREL DESIGNED TO ACCOMMODATE A WIRE RANGE OF AWG 20-24
- CONFIGURATION CONTROL ES 71001 APPLIES.
- THESE CONTACTS ARE USED IN TYCO INSERTS MTC100-YC1-003, MTC100-YC1-004 AND MTC100-YC1-006. SEE DRAWING D-659-0097 FOR INSERT CONFIGURATION.
- RECOMMENDED WIRE STRIP LENGTH: 0.195-0.215 [4.95-5.46].



If this document is printed it becomes uncontrolled. Check for the latest revision

SPECIFICATION CONTROL DRAWING

© 2006 Tyco Electronics Corporation. All rights reserved

| ITEM   | QTY. | PART NO  | DWG OR SPEC NO  | DESCRIPTION   |                      |  |
|--|------|--|---|---|----------------------|--|
| PARTS LIST   |      |  |   |   |                      |  |
| UNLESS OTHERWISE SPECIFIED DIMENSIONS ARE INCHES. METRIC DIMENSIONS ARE IN BRACKETS. |      | DRAWN<br><b>ZS.ORBAN</b><br>DATE<br>Aug/4/06   |   | TYCO ELECTRONICS<br>300 Constitution Drive<br>Menlo Park, CA. 94025 USA |                      |  |
| DECIMAL TOLERANCES<br>.XXX ± [ mm]<br>.XX ± [ mm]<br>.X ± [ mm]                      |      | APPROVED<br><b>M.HIGGY</b><br>DATE<br>Aug/4/06 |   |   |                      | CONTACT. SOCKET. CRIMP.<br>SIZE 22-20<br>MTC100 SERIES |
| ANGLE TOLERANCE<br>.X ±  |      | MATERIAL                                       | TITLE<br>CONTACT. SOCKET. CRIMP.<br>SIZE 22-20<br>MTC100 SERIES |   |                      |  |
| WEIGHT<br>0.192 Gram Max.  |      | FINISH   | SIZE<br>A   | CAGE CODE:<br>06090   | DWG. NO.<br>CTA-0094 |  |
| CAD FILE<br>C060663.DWG  |      | THIRD ANGLE PROJECTION<br>                     | DO NOT SCALE THIS DRAWING                                       |   | SHEET 1 OF 1         |  |