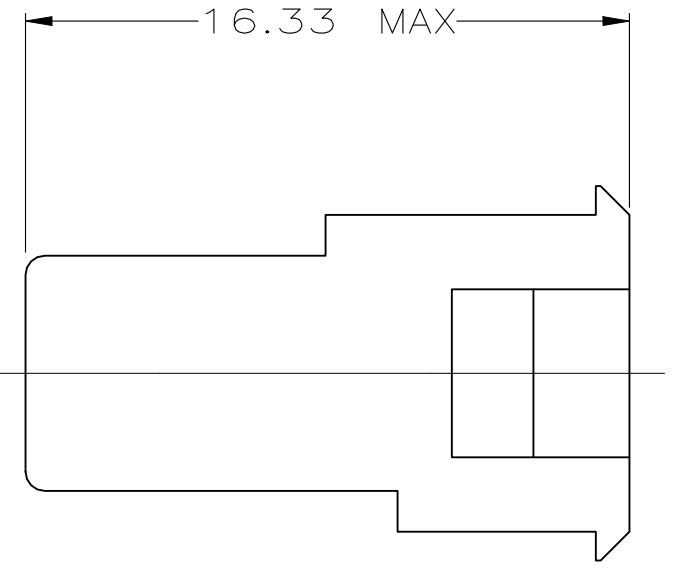
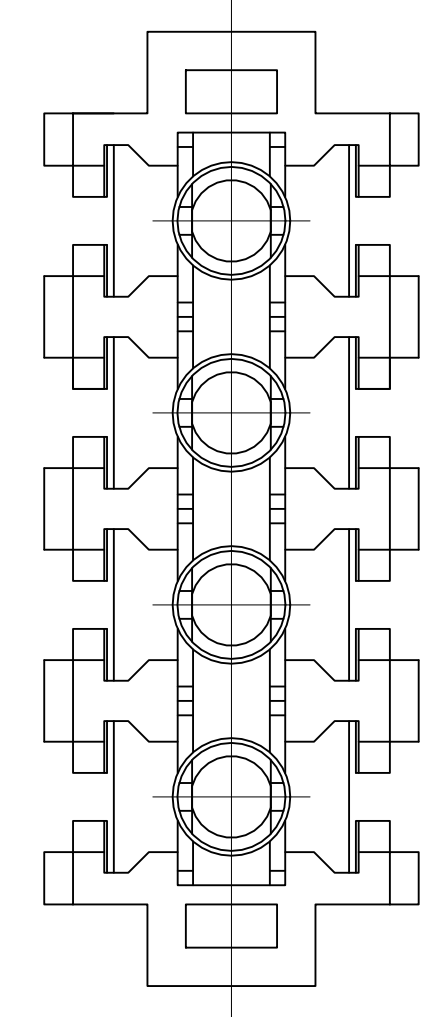
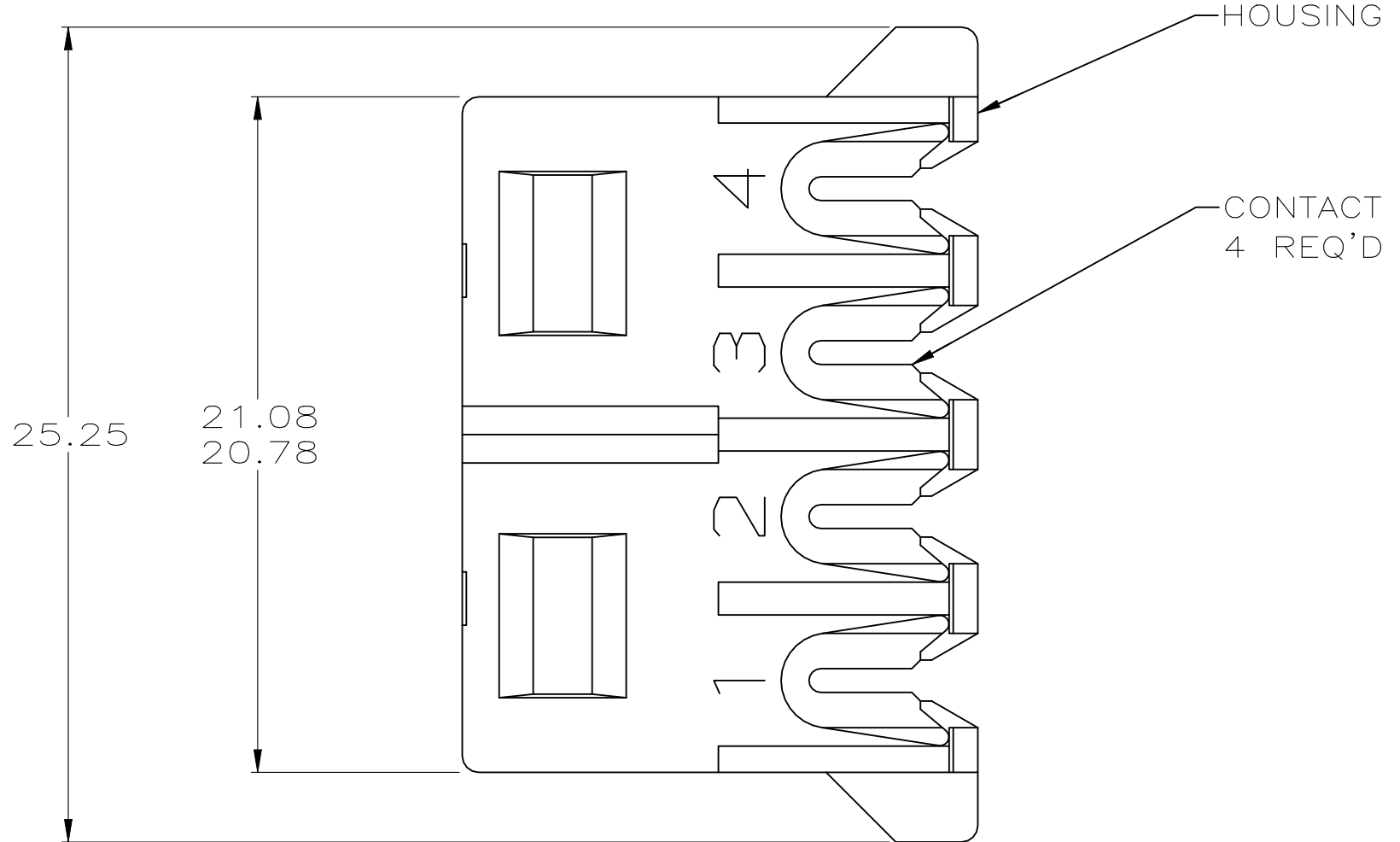
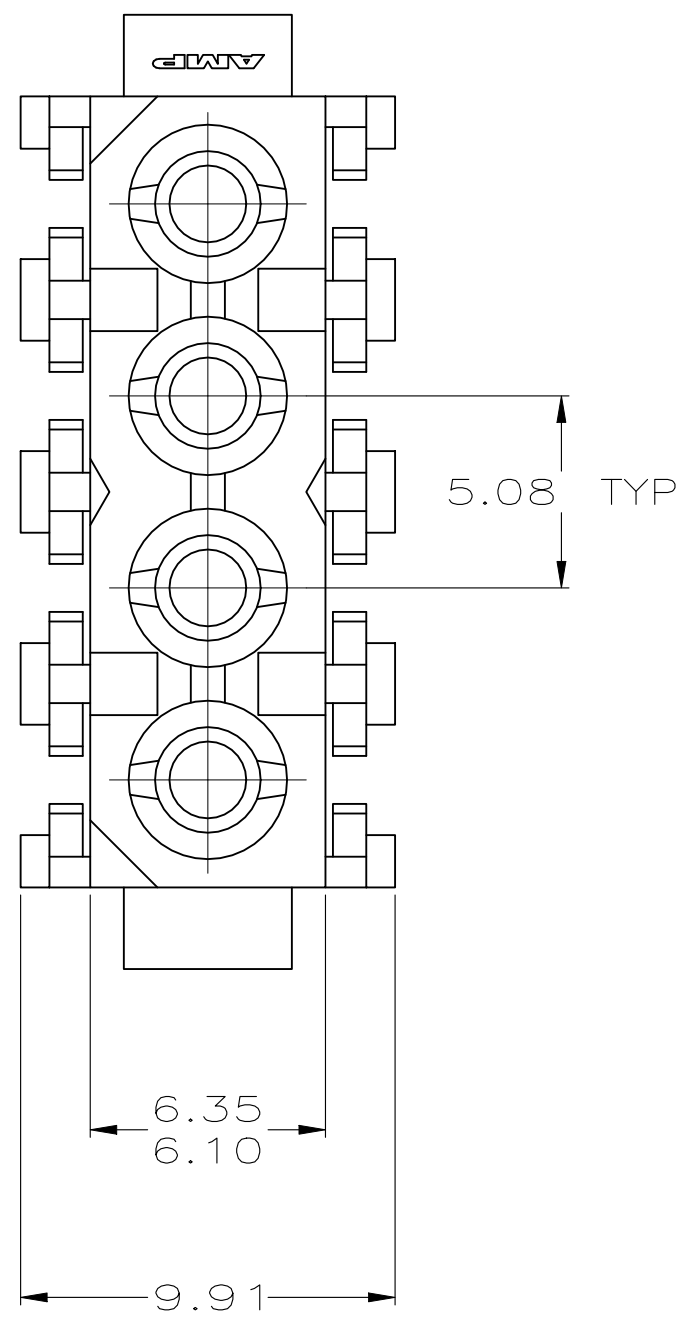


THIS DRAWING IS UNPUBLISHED. RELEASED FOR PUBLICATION
 © COPYRIGHT - By - ALL RIGHTS RESERVED.

LOC		DIST		REVISIONS			
P	LTR	DESCRIPTION		DATE	DWN	APVD	
CM	0	F2	REVISED PER ECR-21-117185		22OCT2021	PJ	VS

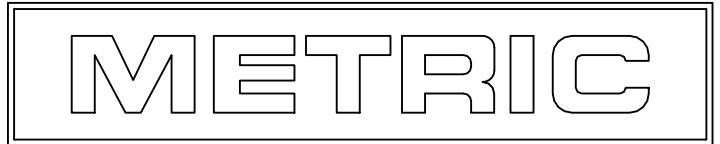


- NOTE DELETED.
- INSULATION DIAMETER 2.41[.095] MAX.
- DIMENSION SHOWN REPRESENT PRODUCT IN DRY CONDITION. ADDITIONAL 2% GROWTH DUE TO END USE LOCATION MOISTURE ABSORPTION MAY OCCUR AND SHOULD BE ACCOUNTED FOR.

BLUE	1.25 mm ² (16 AWG)	PHOS BRONZE, TIN	NYLON,UL 94V-2	770156-5
YELLOW	0.5 mm ² (20 AWG)	PHOS BRONZE, TIN	NYLON,UL 94V-2	770156-4
ORANGE	0.8 mm ² (18 AWG)	PHOS BRONZE, TIN	NYLON,UL 94V-2	770156-3
RED	0.3 mm ² (22 AWG)	PHOS BRONZE, TIN	NYLON,UL 94V-2	770156-2
COLOR ¹	WIRE SIZE	CONTACT MATERIAL AND FINISH	HOUSING MATERIAL	PART NO

MM	IN	MM	IN
9.91	.390	-	-
6.35	.250	25.25	.994
6.10	.240	21.08	.830
5.08	.200	20.78	.818
0.13	.005	16.33	.643

CONVERSION TABLE



THIS DRAWING IS A CONTROLLED DOCUMENT.

DWN	K. WHITAKER	2-10-94
CHK	R. SWING	2-10-94
APVD	-	-
NAME	TE Connectivity	
PRODUCT SPEC	PLUG ASSEMBLY, INSULATION DISPLACEMENT, COMMERCIAL MATE-N-LOK(TM)	
APPLICATION SPEC	-	
WEIGHT	-	-
CUSTOMER DRAWING	SCALE 5:1	SHEET 1 of 1

SIZE: A2 CAGE CODE: 00779 DRAWING NO: C-770156 RESTRICTED TO: -

REVISION: F2