

Fuse modular terminal block - UK 10,3-CC HESILED N 600 3POL - 3048632

Please be informed that the data shown in this PDF Document is generated from our Online Catalog. Please find the complete data in the user's documentation. Our General Terms of Use for Downloads are valid (<http://phoenixcontact.com/download>)




Fuse modular terminal block, fuse type: Glass / ceramics / ..., connection method: Screw connection, cross section: 1.5 mm²- 25 mm², AWG: 16 - 4, nominal current: 32 A, nom. voltage: 600 V, width: 54 mm, fuse type: Class CC, mounting type: NS 35/7,5, NS 35/15, color: black

Your advantages

- For 10 x 38 CC fuse-links in accordance with UL 4248-4
- Quick identification of faulty fuses regardless of the current direction, thanks to LED status indicator
- 3-pos. blocked version
- Easy to bridge

Key Commercial Data

Packing unit	3 pc
GTIN	 4 046356 116022
GTIN	4046356116022

Technical data

Note

Trade restriction	The products are offered exclusively for export outside the EU and the European Economic Area.
-------------------	------------------------------------------------------------------------------------------------

General

Number of levels	1
Number of connections	2
Nominal cross section	25 mm ²
Color	black
Insulating material	PA
Flammability rating according to UL 94	V0
Maximum power dissipation for nominal condition	3.26 W

Fuse modular terminal block - UK 10,3-CC HESILED N 600 3POL - 3048632

Technical data

General

Fuse	Class CC
Fuse type	Glass / ceramics / ...
Rated surge voltage	6 kV
Degree of pollution	3
Overvoltage category	III
Insulating material group	IIIb
Maximum load current	32 A (the current and voltage are determined by the fuse)
Nominal current I_N	32 A (the current and voltage are determined by the fuse)
Nominal voltage U_N	600 V
Open side panel	No

Dimensions

Width	54 mm
Length	81 mm
Height NS 35/7,5	65.5 mm
Height NS 35/15	73 mm

Connection data

Conductor cross section solid min.	1.5 mm ²
Conductor cross section solid max.	25 mm ²
Conductor cross section flexible min.	1.5 mm ²
Conductor cross section flexible max.	25 mm ²
Conductor cross section AWG min.	16
Conductor cross section AWG max.	4
Conductor cross section flexible, with ferrule without plastic sleeve min.	1.5 mm ²
Conductor cross section flexible, with ferrule without plastic sleeve max.	16 mm ²
Conductor cross section flexible, with ferrule with plastic sleeve min.	1.5 mm ²
Conductor cross section flexible, with ferrule with plastic sleeve max.	16 mm ²
Cross section with insertion bridge, solid max.	10 mm ²
Cross section with insertion bridge, stranded max.	10 mm ²
2 conductors with same cross section, solid min.	1.5 mm ²
2 conductors with same cross section, solid max.	4 mm ²
2 conductors with same cross section, stranded min.	1.5 mm ²
2 conductors with same cross section, stranded max.	4 mm ²
2 conductors with same cross section, stranded, ferrules without plastic sleeve, min.	1.5 mm ²
2 conductors with same cross section, stranded, ferrules without plastic sleeve, max.	4 mm ²
2 conductors with same cross section, stranded, TWIN ferrules with plastic sleeve, min.	1.5 mm ²
2 conductors with same cross section, stranded, TWIN ferrules with plastic sleeve, max.	10 mm ²

Fuse modular terminal block - UK 10,3-CC HESILED N 600 3POL - 3048632

Technical data

Connection data

Cross section with insertion bridge, solid max.	10 mm ²
Cross section with insertion bridge, stranded max.	10 mm ²
Connection method	Screw connection
Stripping length	12 mm
Internal cylindrical gage	B6
Screw thread	M5
Tightening torque, min	2.5 Nm
Tightening torque max	3 Nm

Standards and Regulations

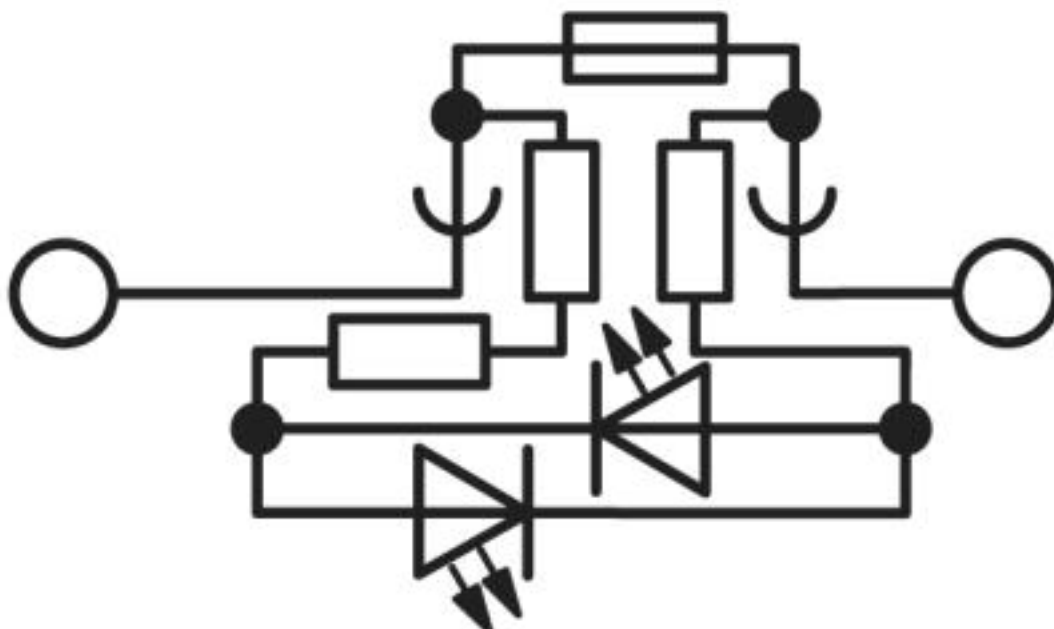
Connection in acc. with standard	CSA
Flammability rating according to UL 94	V0

Environmental Product Compliance

China RoHS	Environmentally friendly use period: unlimited = EFUP-e
	No hazardous substances above threshold values

Drawings

Circuit diagram



Approvals

Approvals

Fuse modular terminal block - UK 10,3-CC HESILED N 600 3POL - 3048632


Approvals


Approvals


CSA / UL Listed / cUL Listed / EAC / cULus Listed


Ex Approvals

Approval details

CSA		http://www.csagroup.org/services-industries/product-listing/	225908
Nominal voltage UN	600 V		
Nominal current IN	30 A		
mm ² /AWG/kcmil	18-4		

UL Listed		http://database.ul.com/cgi-bin/XYV/template/LISEXT/1FRAME/index.htm	FILE E 244294
Nominal voltage UN	600 V		
Nominal current IN	30 A		
mm ² /AWG/kcmil	18-4		

cUL Listed		http://database.ul.com/cgi-bin/XYV/template/LISEXT/1FRAME/index.htm	FILE E 244294
Nominal voltage UN	600 V		
Nominal current IN	30 A		
mm ² /AWG/kcmil	18-4		

EAC		RU C- DE.A*30.B.01742	
-----	-------------------------------------------------------------------------------------	--------------------------	--

cULus Listed			
--------------	-------------------------------------------------------------------------------------	--	--

Phoenix Contact 2019 © - all rights reserved
<http://www.phoenixcontact.com>

PHOENIX CONTACT GmbH & Co. KG
Flachsmarktstr. 8
32825 Blomberg
Germany
Tel. +49 5235 300
Fax +49 5235 3 41200
<http://www.phoenixcontact.com>