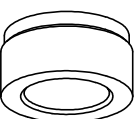
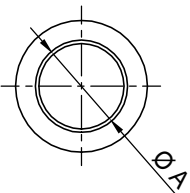
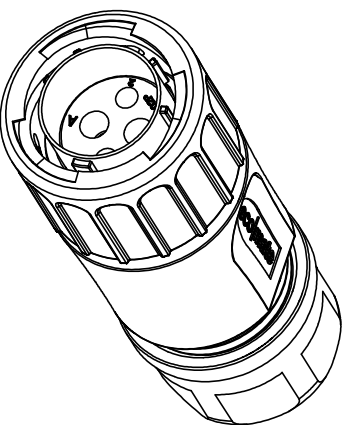
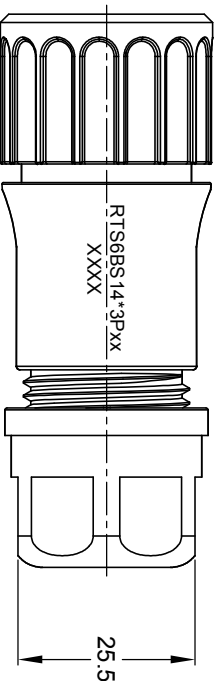
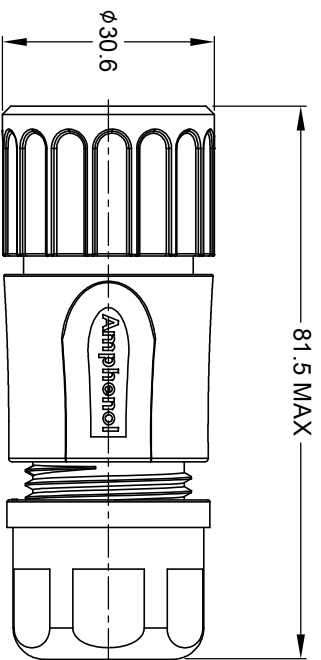
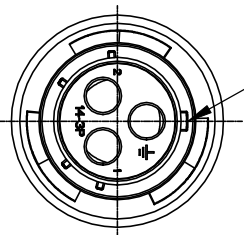


MASTER KEYWAY



NOTES : (UNLESS OTHERWISE SPECIFIED)

1. MATERIAL :

- SHELL : THERMOPLASTIC , UL94 V-0.
- INSERT : THERMOPLASTIC , UL94 V-0.
- COUPLING NUT : THERMOPLASTIC , UL94 V-0.
- O-RING : NBR OR SILICONE RUBBER.
- WASHER : SILICONE RUBBER.
- BACK SHELL : THERMOPLASTIC , UL94 V-0.
- CLAMP NUT : THERMOPLASTIC , UL94 V-0.
- CLAMP RING : THERMOPLASTIC , UL94 V-0.
- CABLE SEAL : EPDM.

2. SPECIFICATIONS :

- 2.1 RATED CURRENT : 45A (MAX).
- 2.2 RATED VOLTAGE : 600V(AC/DC).
- 2.3 OPERATING TEMPERATURE : SEE TABLE.
- 2.4 DIELECTRIC WITHSTANDING VOLTAGE : LESS THAN 2 MILLIAMPS CURRENT LEAKAGE@2500 VOLTS AC.
- 2.5 INSULATION RESISTANCE : 5000 MEGOHMS MIN.
- 2.6 IP CLASS : IP67 AND IP69K IN THE MATED CONDITION, WIRE SEALS FULLY POPULATED.
- 2.7 MATING CYCLES DURABILITY : 500 CYCLES MIN.
- 2.8 RoHS COMPLIANT.

3. SUITABLE CONTACTS : #8 CONTACT.

CONTACT SIZE	CONTACT PN	WIRE RANGE
A4	MP10A23X-25	16 - 14AWG
	MP10A23X-63	12 - 10AWG
	MP10A23X-10	8 AWG

4. ALL DIMENSIONS ARE FOR REFERENCE USE ONLY.

REVISIONS					
REV	ECO	DESCRIPTION	DATE	BY	APPR
A1	-	RELEASED DRAWING	Nov-10-17	Nick	TOMMY
A2	-	UPDATE CABLE OD RANGE	Feb-07-2018	Nick	TOMMY
A3	-	UPDATE DRAWING	Mar-26-2018	White	Tommy
A4	-	UPDATE NOTES	Oct-18-2018	Blink	Tommy

DIMENSION ØA	CABLE OD RANGE
12.3MM	6.0-12.0MM
14.3MM	9.0-14.0MM

KEY	PART NUMBER
-40°C ~ +105°C	RTS6BS14N3P
-40°C ~ +125°C	RTS6BS14N3P03

QUANTITY	PART NUMBER	DESCRIPTION	ITEM
MATERIALS LIST			

UNLESS OTHERWISE SPECIFIED			
1) All dimensions are in metric(mm).	DRAWN	DATE	<p style="text-align: center;">Amphenol</p> <p>Sine Systems - www.amphenol-sine.com 44724 Midway Drive Clinton Township, MI 48036</p>
2) Tolerances are as follows:	CHK	04-16-2018	
3 PL DEC 2018	TD	04-16-2018	
3) Note reference =	ENGR		
MATERIAL SPECIFICATIONS:	APPROVAL	Tommy	04-16-2018
PROCESS SPECIFICATIONS:	CUSTOMER		
NEW ASBY:	THIS DRAWING IS SUPPLIED FOR INFORMATION ONLY. DESIGN FEATURES, DIMENSIONS AND MATERIALS ARE THE PROPERTY OF AMPHENOL CORPORATION. NO RIGHTS OR DIMENSIONS ARE SUBJECT TO NORMAL MANUFACTURING VARIATIONS.		

SIZE	TYPE	DWG NO.	REVISION
B	C-	RTS6BS14*3Pxx	A4
SCALE	NONE	SHEET 1	OF 1