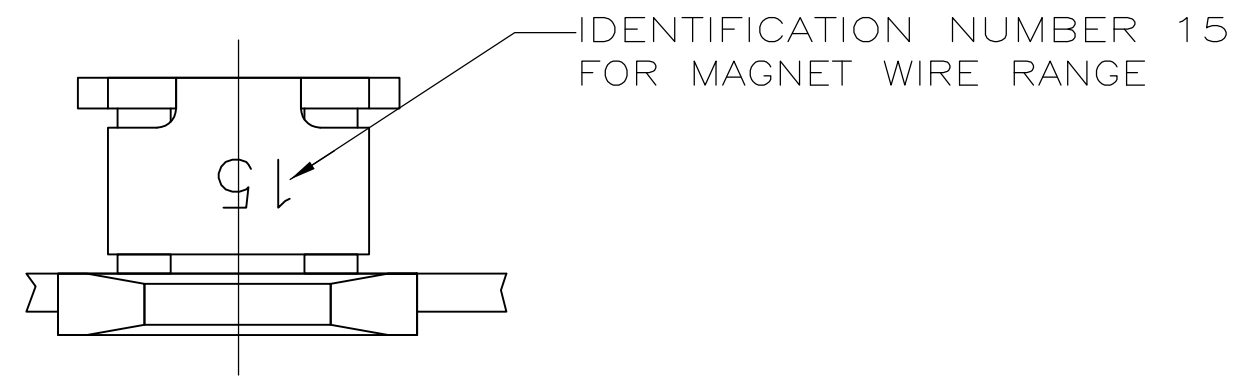
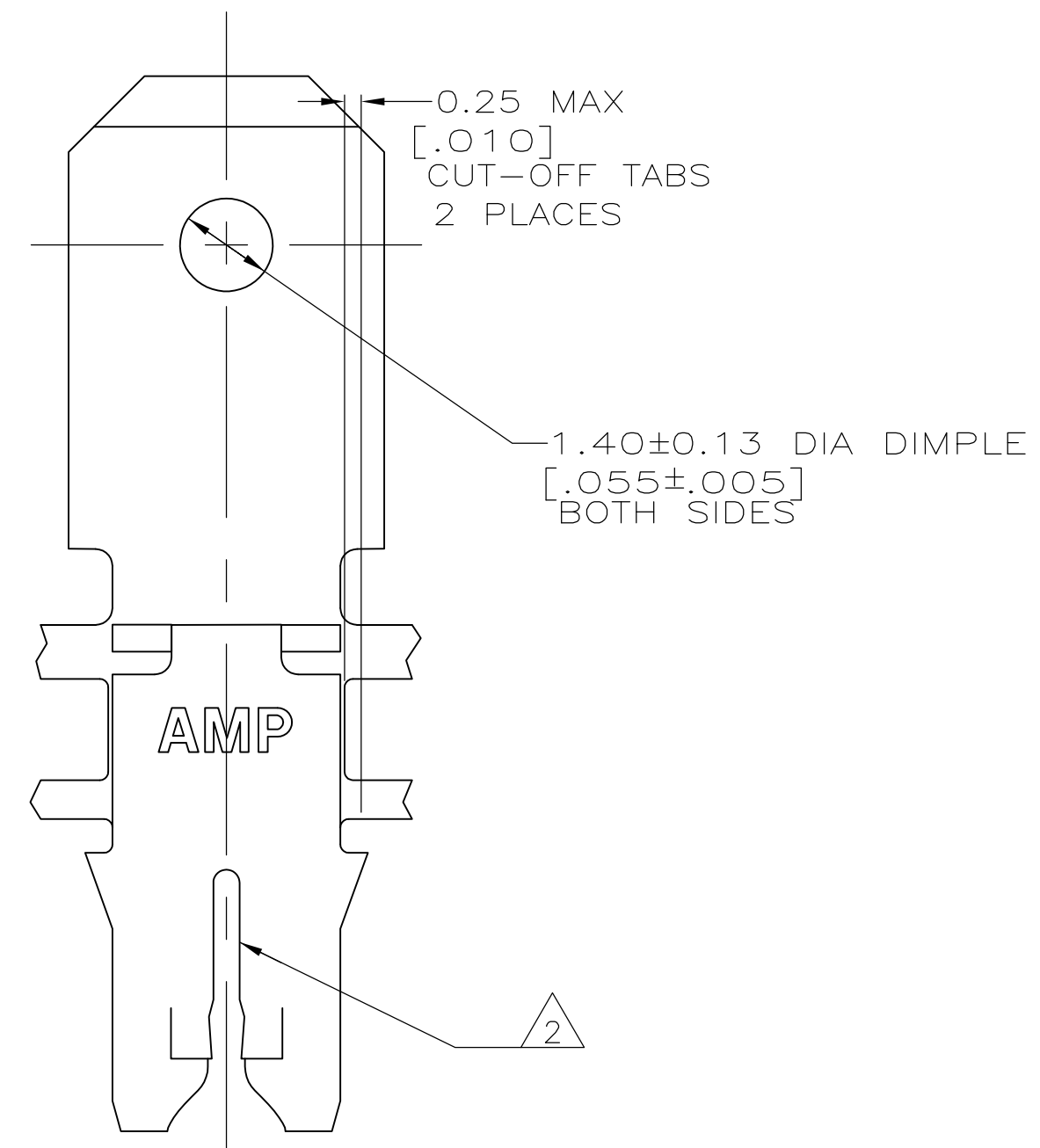
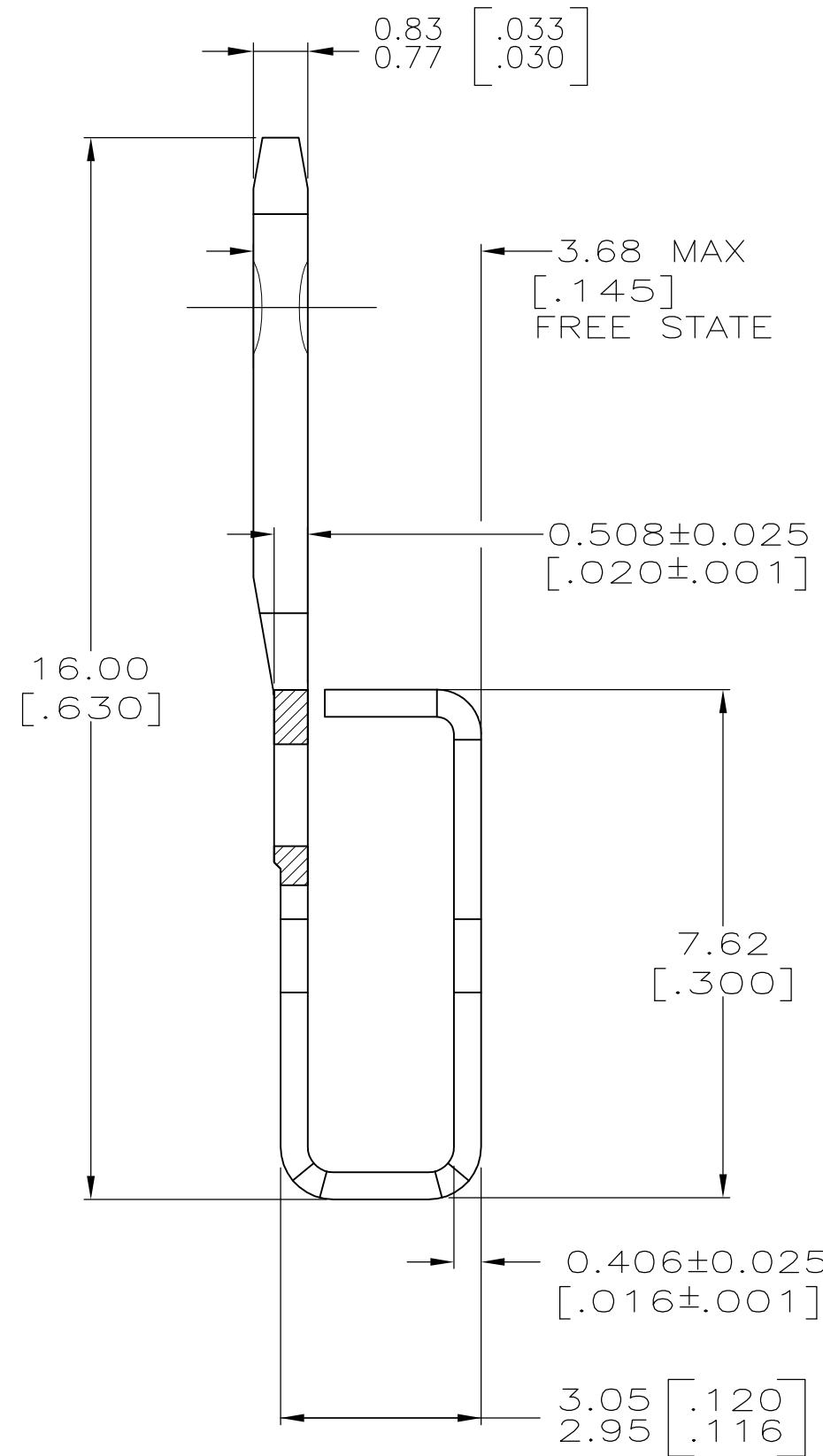
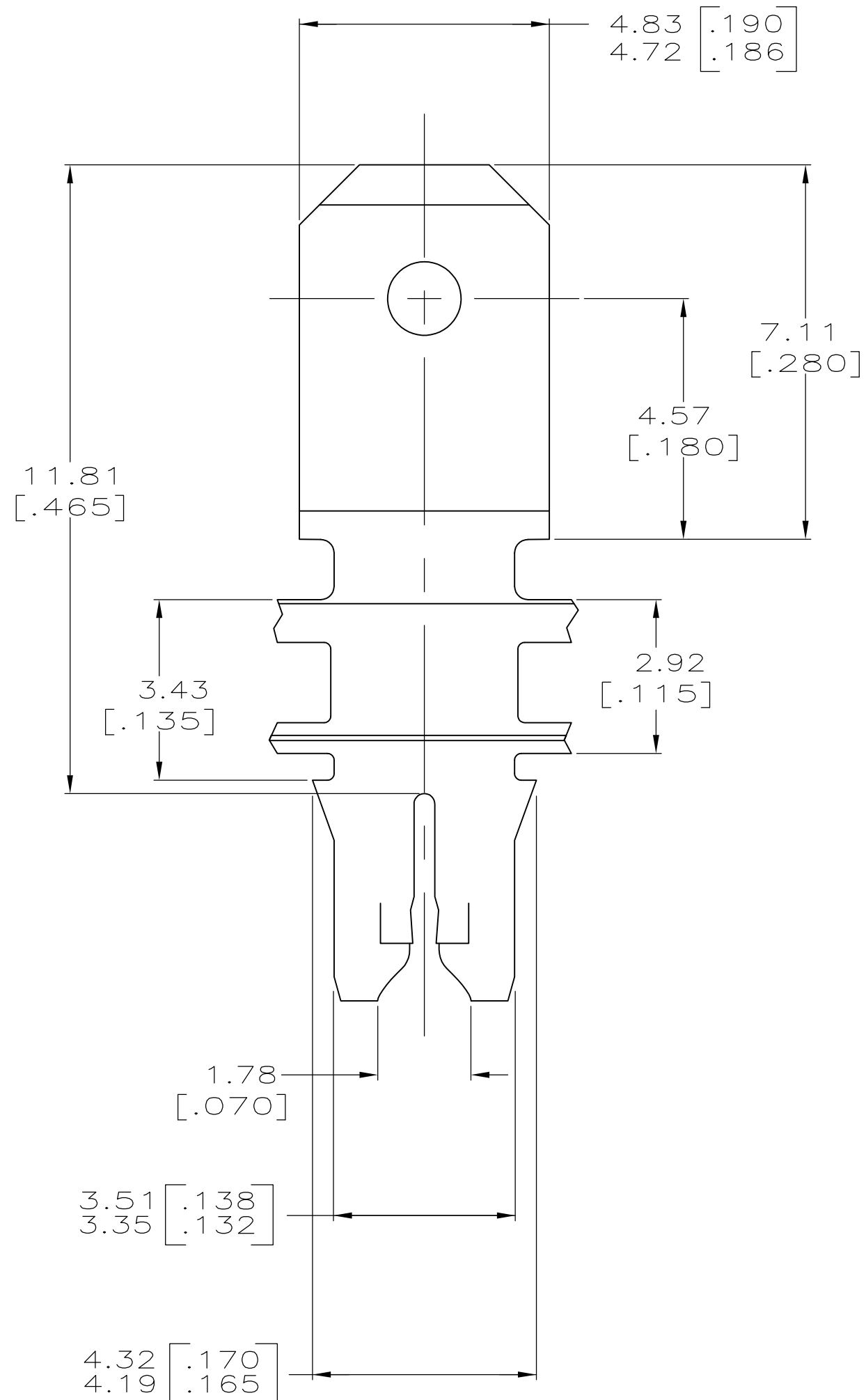


THIS DRAWING IS UNPUBLISHED. RELEASED FOR PUBLICATION
 © COPYRIGHT - By - ALL RIGHTS RESERVED.

LOC		DIST		REVISIONS			
P	LTR	DESCRIPTION		DATE	DWN	APVD	
AF	50	D2	ECR-15-005665	10AUG2015	BDA	PKS	



- CONTINUOUS STRIP ON REELS WITH TERMINALS LOCATED ON 5.59 ± 0.08 [$.220 \pm .003$] CENTERS.
- SLOT ACCEPTS A SINGLE WIRE MAX OF $0.64 - 0.81$ mm [#22-#20] AWG COPPER MAGNET WIRE.
SLOT ACCEPTS A SINGLE WIRE MAX OF $0.72 - 0.91$ mm [#21-#19] AWG ALUMINUM MAGNET WIRE
ALUMINUM WIRE RANGE APPLIES FOR POST-TIN PLATED VERSIONS ONLY.
- AFTER INSERTION INTO PLASTIC HOLDER TAB PORTION MUST BE BENT OVER 45° TO 90° OR POTTED-IN TO PREVENT PULL-OUT WHEN MATING RECEPTACLE IS DISCONNECTED.



1217065-1
PART NUMBER

THIS DRAWING IS A CONTROLLED DOCUMENT.		DWN R.GRZYBOWSKI 26FEB98	TE TE Connectivity	
DIMENSIONS: mm [INCHES]		CHK M.S.FEHER 26FEB98		
TOLERANCES UNLESS OTHERWISE SPECIFIED:		APVD N.E.NEFF 26FEB98	NAME	
0 PLC ± -	1 PLC ± -	PRODUCT SPEC 108-2012	TERMINAL, TAB	
2 PLC ± 0.25[.010]	3 PLC ± -	APPLICATION SPEC 114-2046	4.75[.187] FASTON™	
4 PLC ± -	ANGLES ± -	WEIGHT -	SIZE A2	CAGE CODE 00779
MATERIAL BRASS	FINISH TIN PLATE	CUSTOMER DRAWING	DRAWING NO C=1217065	RESTRICTED TO -
			SCALE 10:1	SHEET 1 of 1
			REV D2	