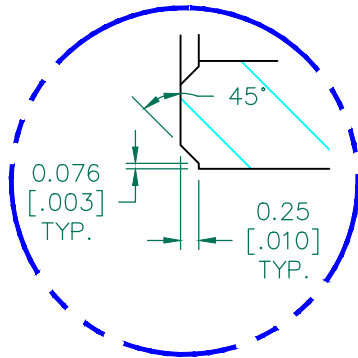


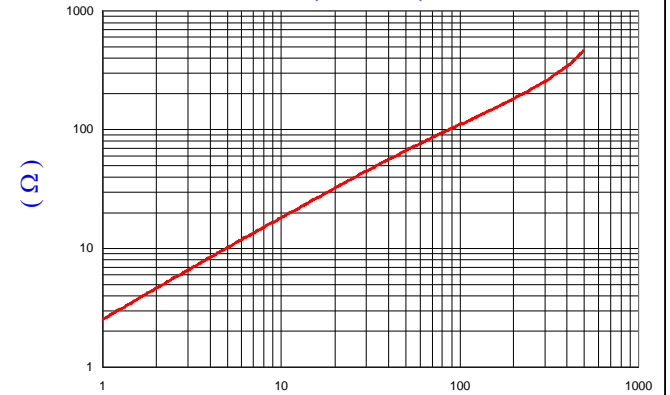
SEE DETAIL "A"  
SECTION A-A



DETAIL "A"  
CHAMFER  
SCALE=10:1

IMPEDANCE ( Z )			
Frequency	25 MHz	100 MHz	300 MHz
Nominal (REF)	38 Ω	110 Ω	251 Ω
Minimum	- Ω	88 Ω	- Ω

Z vs. FREQUENCY  
(REF. ONLY)



AGILENT E4991A Impedance/Material Analyzer  
HP 16092A Test Fixture, REF # 5903

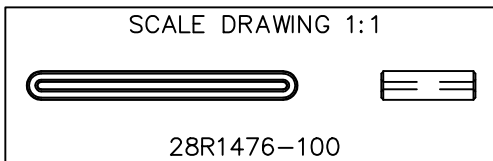
FERRITE CORE DIMENSIONS (SPEC): mm [in]

A	37.50 [1.476]	+ 0.80 [.031]
B	34.50 [1.358]	+ 0.50 [.020]
C	13.00 [.512]	+ 0.40 [.016]
D	4.00 [.157]	+ 0.70 [.027]
		- 0.30 [.012]
E	1.00 [.039]	+ 0.40 [.016]
		- 0.20 [.008]

WEIGHT/1000 7.13 kgs. [15.71 Lbs]

NOTES:

1. COSMETIC SPECIFICATION REFER TO WI-QA-038.



ROHS

DIMENSIONS ARE IN mm[INCHES].				This print is the property of Laird Tech. and is loaned in confidence subject to return upon request and with the understanding that no copies shall be made without the written consent of Laird Tech. All rights to design or invention are reserved.		Laird™		
				PROJECT/PART NUMBER:		REV	PART TYPE:	DRAWN BY:
C	UPDATED LOGO AND ADD NOTE	11/06/15	Jcai	28R1476-100		C	FERRITE RIBBON CORE	TMB
B	ADD Z SPECS AND CURVE	11/08/07	JRK	DATE:	10/31/07	SCALE:	2.5:1	MATERIAL:
A	ORIGINAL DRAFT	10/31/07	TMB	CAD #	28R1476-100-C	TOOL #	R1476	FERRITE
REV	DESCRIPTION	DATE	INT					