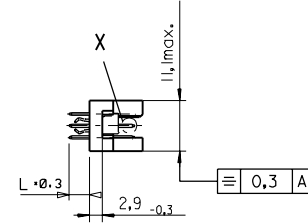
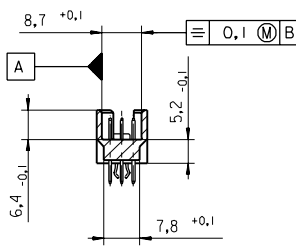
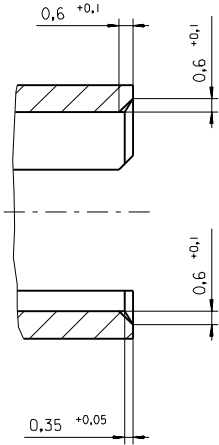
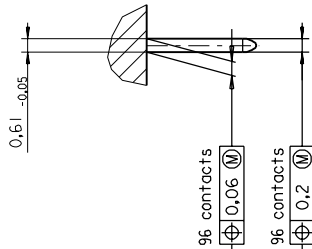


PART NO.
DWG. NO.

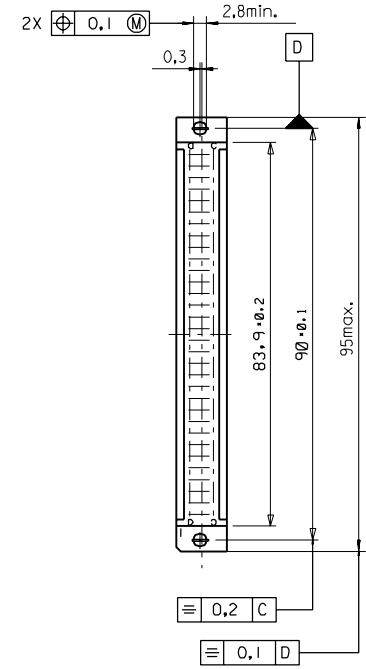
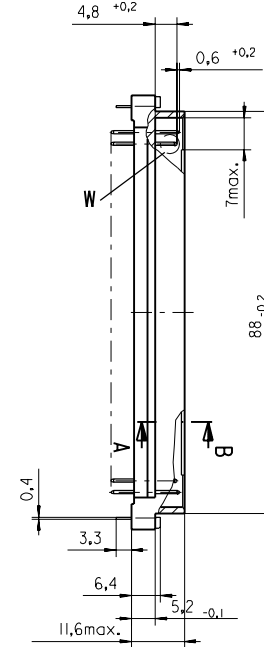
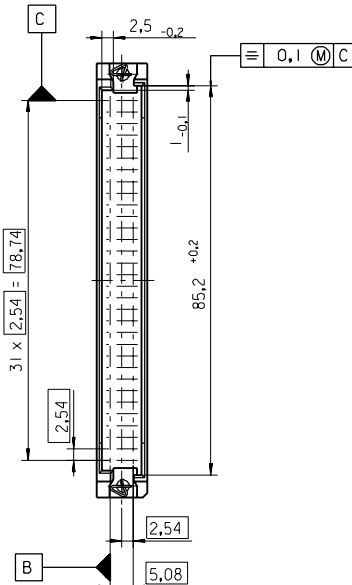
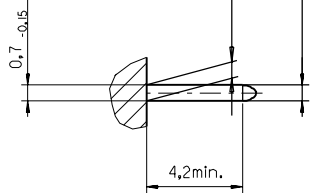
Section A - B
5:1



View X
5:1



View W
5:1



| FIRST ANGLE PROJECTION | | REVISE ONLY ON CAD SYSTEM | | SH. | REV. |
|--|--------|---------------------------|------|---|---|
| UNLESS OTHERWISE SPECIFIED TOLERANCES: ANGULAR ±2° | INCH | DRWG BY | SIGN | CAD/CAM PROJECT NAME | |
| | METRIC | Ca | | 85013000 | THIS DRAWING CONTAINS INFORMATION THAT IS PROPRIETARY TO MOLEX INC. & SHOULD NOT BE USED WITHOUT WRITTEN PERMISSION |
| 3 PLACE ± . ± | | CHK'D BY | SIGN | TITLE | |
| 2 PLACE ± . ± | | KN | | 96 pos. Male connector acc. DIN 41612 Style R | |
| 1 PLACE ± . ± | | APP'D BY | SIGN | Dimensions | |
| DRAFT WHERE APPLICABLE MUST REMAIN WITHIN DIMENSIONS | | | | MOLEX MOLEX EUROPE | |
| DESIGN DIMENSION <input checked="" type="checkbox"/> MM <input type="checkbox"/> IN. | | SCALE | | SHEET NO. DATE | |
| EQUIVALENT DIMENSION <input type="checkbox"/> MM <input type="checkbox"/> IN. | | 1:1 | | 1 OF 95/06/07 | |
| IF TWO DIMENSIONS ARE SHOWN THE UPPER IS THE DESIGN DIMENSION, LOWER IS SECONDARY | | | | PART NO. DWG NO. SIZE | |
| | | | | SDA-85013-0001 B | |

View on mating side

| | | | | | | | | | | | | | | | | | | | |
|---|---|---|---|---|---|---|---|---|---|---|---|---|---|---|---|---|---|---|---|
| o | A | A | A | A | A | A | A | A | A | A | A | A | A | A | A | A | A | A | A |
| o | | | | | | | | | | | | | | | | | | | |
| o | A | A | A | A | A | A | A | A | A | A | A | A | A | A | A | A | A | A | A |

1 2 3 4 5 6 7 8 9 10 11 12 13 14 15 16 17 18 19 20 21 22 23 24 25 26 27 28 29 30 31 32 33 34

A = 64 standard contacts L=13,3

| | |
|-------------------|---|
| Marking | Standard |
| Performance level | G2/0 = Contact area perform. level2 / Termination tin |
| Flux proof | no |
| Fixing clip | no |
| Dimensions | SDA-85013-0001 sht.1 |
| Technical Data | PS-85013-0001 |

| | | | |
|----------------|----------------|-------------------------|-------|
| A | G2/0 | a1-32 | c1-32 |
| Contact symbol | Perform. level | Contact position number | |

| | | | | | | | | | |
|-----------------------------------|-----------|---|--|---------|--|----------------------|------------------------|---|------|
| first release see ECN No. 1868 | REVISIONS | | FOR PREVIOUS REVISIONS SEE MRI LIST | | REVISE ONLY ON CAD SYSTEM | | SH. | REV. | |
| | LTR | | UNLESS OTHERWISE SPECIFIED TOLERANCES: ANGULAR $\pm 0.2^\circ$ | DRWG BY | SIGN | CAD/CAM PROJECT NAME | | THIS DRAWING CONTAINS INFORMATION THAT IS PROPRIETARY TO MOLEX INC. & SHOULD NOT BE USED WITHOUT WRITTEN PERMISSION | |
| | | | 3 PLACE \pm . | C | C | TITLE | | SHEET NO. | DATE |
| | | 2 PLACE \pm . | CHK'D BY | KN | 96 pos. Male connector acc. DIN 41612 style R contacts arrangement | | 1 OF 1 | 95/06/06 | |
| | | 1 PLACE \pm . | APP'D BY | SCALE | MOLEX EUROPE | | | | |
| | | DRAFT WHERE APPLICABLE MUST REMAIN WITHIN DIMENSIONS | | | PART NO. 85013-1677 | | DWG NO. SDA-85013-1677 | | |
| | | DESIGN DIMENSION <input type="checkbox"/> MM <input type="checkbox"/> IN. | | | SIZE | | A | | |
| | | EQUIVALENT DIMENSION <input type="checkbox"/> MM <input type="checkbox"/> IN. | | | 85013-1677 | | SDA-85013-1677 | | |
| | | IF TWO DIMENSIONS ARE SHOWN THE UPPER IS THE DESIGN DIMENSION, LOWER IS SECONDARY | | | | | | | |