

SMD Power Inductor CDRH26D09



Halogen Free



Description

- Ferrite drum core construction.
- Magnetically shielded.
- L × W × H: 3.1 × 2.8 × 1.0 mm Max.
- Product weight: 25mg(Ref.)
- Moisture Sensitivity Level: 1
- RoHS compliance.
- Halogen Free available.

Environmental Data

- Operating temperature range: -40°C~+105°C (including coil's self temperature rise)
- Storage temperature range: -40°C~+105°C
- Solder reflow temperature: 260 °C peak.

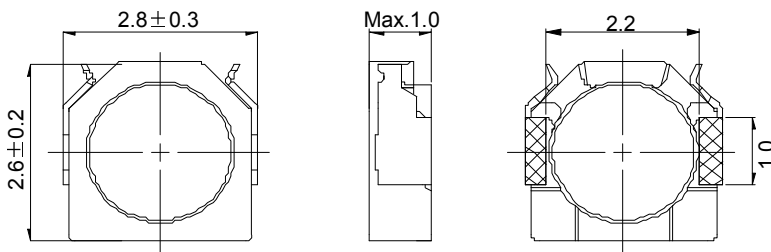
Packaging

- Carrier tape and reel packaging
- 7.0" diameter reel
- 3000pcs per reel

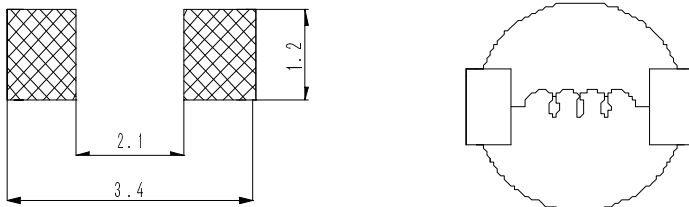
Applications

- Ideally used in Mobilephone, PDA, MP3, DSC/DVC ,etc. as DC-DC converter inductors.

Dimension - [mm]



Land pattern and Schematics - [mm]



Electrical Characteristics

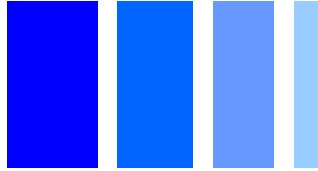
Part No.	Stamp	Inductance (μ H) [Within] ※1	D.C.R. (m Ω) Max.] (Typ.) (at 20°C)	Saturation current (A) ※2		Temperature rise Current (A) ※3
				(at 20°C)	(at 105°C)	
CDRH26D09NP-1R2PC	A	1.2 ± 25%	105(83.8)	1.32	1.08	1.45
CDRH26D09NP-1R5PC	B	1.5 ± 25%	118(94.0)	1.21	1.00	1.30
CDRH26D09NP-2R2PC	C	2.2 ± 25%	154(123)	1.05	0.88	1.00
CDRH26D09NP-3R3PC	D	3.3 ± 25%	238(190)	0.80	0.67	0.85
CDRH26D09NP-4R7PC	E	4.7 ± 25%	286(229)	0.66	0.56	0.72
CDRH26D09NP-6R8PC	F	6.8 ± 25%	453(362)	0.55	0.45	0.58
CDRH26D09NP-8R2PC	G	8.2 ± 25%	483(386)	0.50	0.42	0.54
CDRH26D09NP-100PC	H	10 ± 25%	675(540)	0.47	0.40	0.45

※1. Inductance measuring condition: at 100kHz.

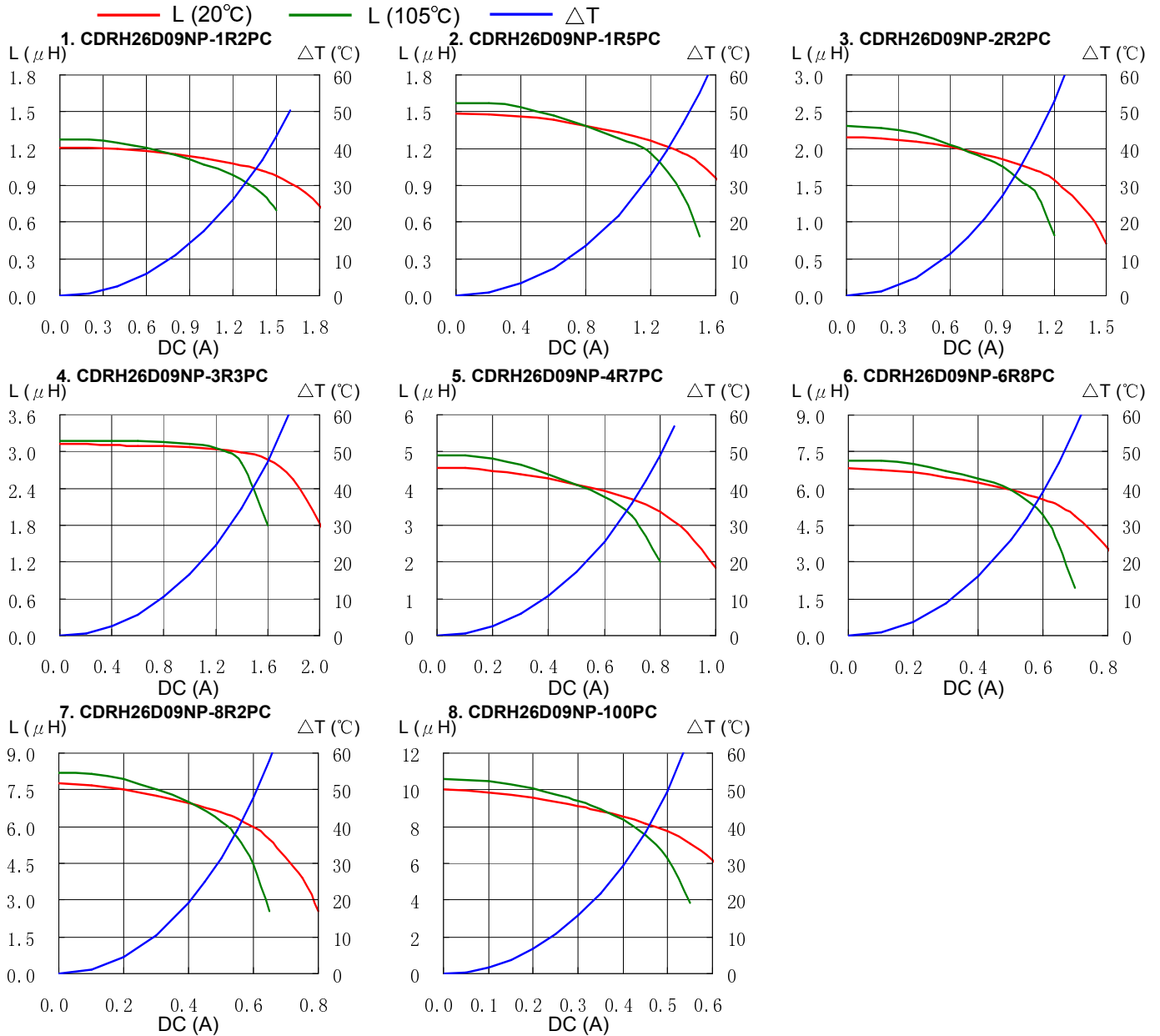
※2. Saturation current: The value of D.C. current when the inductance decreases to 70% of it's nominal value.

※3. Temperature rise current: The value of D.C. current when the temperature rise is $\Delta t = 40^\circ\text{C}$ ($T_a = 20^\circ\text{C}$).

SMD Power Inductor CDRH26D09



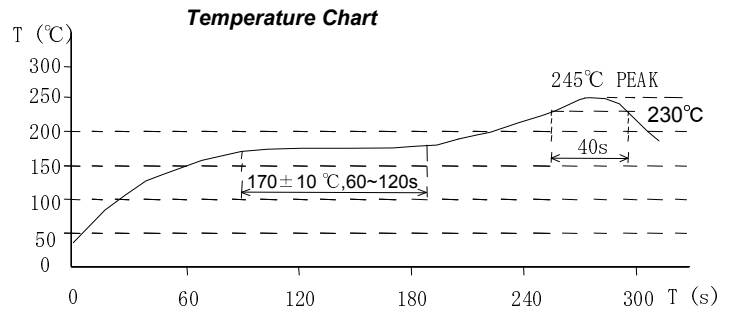
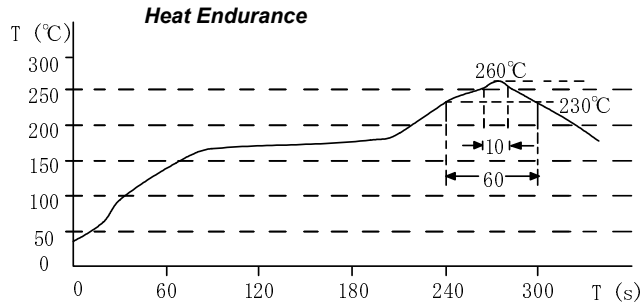
Saturation Current & Temperature Rise Graph



SMD Power Inductor CDRH26D09



Solder Reflow Condition



Please refer to the sales offices on our website - <http://www.sumida.com>

Hong Kong

Tel.+852-2880-6781
FAX.+852-2565-9600
sales@hk.sumida.com

Saitama(Japan)

Tel.+81-48-691-7300
FAX.+81-48-691-7340
sales@jp.sumida.com

Chicago

Tel.+1-847-545-6700
FAX. +1-847-545-6720
sales@us.sumida.com

Shanghai

Tel.+86-21-5836-3299
FAX.+86-21-5836-3266
shanghai.sales@cn.sumida.com

Seoul

Tel.+82-2-6237-0777
FAX.+82-2-6237-0778
sales@kr.sumida.com

Oberzell

Tel.+49-8591-937-0
FAX. +49-8591-937-103
contact@eu.sumida.com

Shenzhen

Tel.+86-755-8291-0228
FAX.+86-755-8291-0338
shenzhen.sales@cn.sumida.com

Singapore

Tel.+65-6296-3388
FAX.+65-6841-4426
sales@sg.sumida.com

Neumarkt

Tel.+49-9181-4509-110
FAX. +49-9181-4509-310
infocomp@eu.sumida.com

Taipei

Tel.+886-2-8751-2737
FAX.+886-2-8751-2738
sales@tw.sumida.com

San Jose

Tel.+1-408-321-9660
FAX.+1-408-321-9308
sales@us.sumida.com