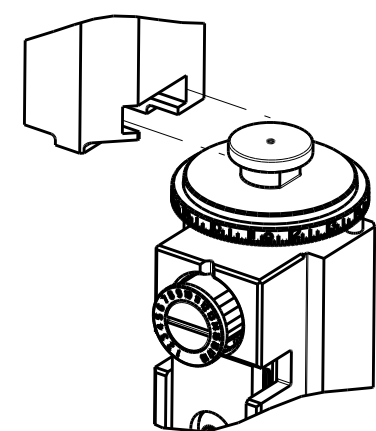


PART NUMBER	REVISION	DESCRIPTION	FEED TYPE
2151794-2	J	FINE CRIMP HEIGHT ADJUST	PNEUMATIC
7-2151794-2	J	PNEUMATIC AND CRIMP TOOLING KIT	PNEUMATIC
7-2151794-7	C	CRIMP TOOLING KIT	-

ATLANTIC VERSION TERMINATOR INTERFACE ADAPTER



APPLICATOR DATA		
CRIMP	SIZE	TYPE
WIRE	5.08 mm [.200]	F
INSUL	10.92 mm [.430]	O

APPLICATOR INSTRUCTIONS
408-35042

TERMINAL DATA: TE TERMINAL		TE CRIMP SPECIFICATION	
TERMINAL NAME: AMP MCP 9.5 FLAT TYPE RECEPTACLE, SWS			
WIRE STRIP LENGTH		INSULATION DIAMETER RANGE	
9.70-10.30 mm [.382-.406 IN]		∅	-
TERMINAL APPLICATION SPECIFICATION	114-18269		-

TERMINALS APPLIED				
TE TERMINAL	TE TERMINAL	TE SEAL	TE SEAL	CABLE ∅
1-967590-1	1-967590-2		1355437-1	∅4.6-5.2
			1355437-2	∅5.8-6.6

WIRE SIZE	CRIMP HEIGHT mm [INCH]	CRIMP HEIGHT REFERENCE SETTING
10.00mm2	3.84 +/- 0.05 [.151 +/- .002]	2.7
6.00mm2	3.22 +/- 0.05 [.127 +/- .002]	9.6

TERMINAL DATA: TE TERMINAL		TE CRIMP SPECIFICATION	
TERMINAL NAME: AMP MCP 9.5 FLAT TYPE RECEPTACLE, SWS			
WIRE STRIP LENGTH		INSULATION DIAMETER RANGE	
10.60-11.40mm [.457-.449 IN]		∅	-
TERMINAL APPLICATION SPECIFICATION	114-18075		-

TERMINALS APPLIED				
TE TERMINAL	TE TERMINAL	TE SEAL	TE SEAL	CABLE ∅
962938-1	2-962938-1		1355437-1	∅4.6-5.2
			1355437-2	∅5.8-6.6

WIRE SIZE	CRIMP HEIGHT mm [INCH]	CRIMP HEIGHT REFERENCE SETTING
10.00mm2	3.82 +/- 0.10 [.150 +/- .004]	2.9
6.00mm2	3.20 +/- 0.05 [.126 +/- .002]	9.8

- 1 RECOMMENDED SPARE PARTS
- 2 REFER TO SUPPLIED INSTRUCTION SHEET FOR CLEANING, LUBRICATION AND STORAGE OF APPLICATOR.
- 3 APPLY PART NUMBER 2-23419-6 LOCTITE TO THREADS OF ITEM 242.
- 4 CRIMP HEIGHT REFERENCE SETTING WAS THE SETTING USED WHEN THE APPLICATOR WAS QUALIFIED AT THE FACTORY. ADJUSTMENT MAY BE NECESSARY WHEN RUNNING APPLICATOR IN THE FIELD.
- 5 TERMINAL LUBRICANT IS RECOMMENDED.
- 6. UNLESS SPECIFIED OTHERWISE TORQUE VALUES SHALL BE USED PER DOCUMENT, 101-35000.
- 7 APPLY TORO-SEAL IN ALLEN SOCKET TO FILL HOLE AFTER FLAT HD HAS BEEN ADJUSTED TO CORRECT HEIGHT AT QUALIFICATION.
- 8 CUT TO LENGTH AT ASSEMBLY.
- 9 RELOCATE ITEM 19 TO BACK OF APPLICATOR.
- 10 TERMINAL PITCH NOT COMPATIBLE WITH MECHANICAL FEED.

***WARNING**
ON INSTALLATION, SET WIRE DISC TO CRIMP HEIGHT REFERENCE SETTING FOR LARGEST WIRE SIZE. CRIMP HEIGHT REFERENCE SETTINGS GREATER THAN THE VALUE SHOWN MAY CAUSE DAMAGE TO THE CRIMP TOOLING. REFER TO THE INSTRUCTION SHEET FOR PROPER SETUP AND ADJUSTMENTS.

LOC	DIST	REVISIONS					
		P	LTN	DESCRIPTION	DATE	OWN	APPD
A	66	F		ECR-18-016345	15OCT2018	TB	TE
		G		ECR-19-001352	25JAN2019	TB	TE
		H		ECR-19-001861	04FEB2019	LG	CT
		J		ECR-19-005860	11APR2019	FJ	TE

-	1	1	5018030-1	NUT, HEX, REG, RoHS, M3	291	
-	1	1	1-18028-2	WASHER, FLAT, REG M4	271	
-	1	1	2119641-1	FEED CAM, AIR FEED	248	
-	1	1	2119082-7	CAM, SNAIL, INSULATION ADJUSTMENT	244	
-	1	1	2079764-1	WASHER, WAVE SPRING, CREST-TO-CREST	243	
3	-	1	2119083-1	RETAINER, INSULATION DIAL	242	
-	1	1	2844940-2	AIR FEED MODULE	238	
-	1	1	455888-9	SPACER, CRIMPER	221	
-	REF	REF	994970-2	COUNTER, MAGNETIC	164	
-	1	1	1-22281-8	SPRING, COMPRESSION	121	
5	-	1	2119955-1	ASSY, LUBRICATOR, SIDE FEED	113	
-	1	1	2844908-1	SCREW, LOCKING	99	
-	1	1	2844907-1	POST, LOCKING	98	
-	1	1	1-690438-0	FRONT STRIP GUIDE	96	
-	2	2	2168083-1	SCR, SKT HD CAP, RoHS, M3 X 8.0	95	
-	1	1	2168083-6	SCR, SKT HD CAP, RoHS, M5 X 65	93	
-	1	1	455888-9	SPACER, CRIMPER	82	
8	-	2	2079383-4	SCR, BHSC, RoHS (M4 X 8)	79	
-	1	1	1803096-1	EXTENSION PLATE	78	
-	2	2	2168083-1	SCR, SKT HD CAP, RoHS, M3 X 8.0	77	
-	1	1	1633782-7	FENCE	76	
-	1	1	1803607-3	DOCUMENTATION PACKAGE	71	
-	1	1	1-2119791-2	DEPRESSOR, WIRE	70	
-	1	1	2119943-1	WASHER, SPACER	69	
-	1	1	2119740-1	TAG, IDENTIFICATION	67	
-	2	2	2168078-1	SCREW, DRIVE, RH, RoHS, 2 x .188	66	
-	2	2	2-18032-5	SCR, SET, FLT PNT, M5 X 20.0	61	
-	1	1	2168083-2	SCR, SKT HD CAP, RoHS, M4 X 8.0	60	
-	1	1	5-18022-5	SCR, HEX HD CAP, M4 X 6.0	59	
7	-	1	1-2168083-3	SCR, SKT HD CAP, RoHS, M3 X 16	57	
-	1	1	1-1338683-1	FEED PAWL	56	
-	4	4	2168083-3	SCR, SKT HD CAP, RoHS, M4 X 12.0	54	
-	2	2	2168083-8	SCR, SKT HD CAP, RoHS, M4 X 16	53	
-	1	1	5018030-1	NUT, HEX, REG, RoHS, M3	52	
-	1	1	1-811242-0	BUMPER, HOLD DOWN	51	
-	1	1	690753-2	SPACER, TONKER	50	
-	1	1	18023-9	SCR, SKT HD CAP M4 X 6.0	49	
-	1	1	2-1803583-6	APPLICATOR BASIC ASSEMBLY, SF	46	
-	1	1	1803515-2	RAM ASSEMBLY, SF ATLANTIC	44	
-	1	1	1803602-2	SCR, BHSC, RoHS (M8 X 40)	41	
-	1	1	1752356-7	SUPPORT, TERMINAL	34	
8	-	2	2	1-2079383-3	SCR, BHSC, RoHS (M4 X 25)	33
-	2	2	3-2844962-7	SPACER, CYLINDRICAL, STRIP GUIDE	30	
-	1	1	2844938-9	PLATE, STRIP GUIDE	29	
-	1	1	3-455888-2	SPACER, CRIMPER	28	
-	2	2	22283-1	SPRING, COMPRESSION	27	
-	1	1	356835-1	LEVER, DRAG RELEASE	26	
-	1	1	240792-1	DRAG, TERMINAL	25	
-	1	1	1320928-6	STRIP GUIDE	24	
-	1	1	980371-4	SCR, SKT HD SHLDR 5.0 DIA X 6.0	23	
-	1	1	2168083-2	SCR, SKT HD CAP, RoHS, M4 X 8.0	21	
-	2	2	1-18028-2	WASHER, FLAT, REG M4	20	
9	-	1	1	1803013-1	STRIPPER, SIDE FEED	19
-	1	1	4-22280-7	SPRING, COMPRESSION	12	
-	1	1	1-356885-3	STOP, SHEAR	11	
-	1	1	2-2119805-3	SHEAR HOLDER, FRONT	10	
-	1	1	1-318059-3	FLOATING SHEAR, FRONT	9	
1	1	2	1	1-1633930-3	ANVIL, COMBINATION	8
-	1	1	2-240641-9	SPACER	7	
-	-	-	-	-	6	
-	1	1	1803080-3	DEPRESSOR, SHEAR	5	
-	1	1	2-238011-9	BLOCK, CRIMPER SPACER	4	
1	1	2	1	1803453-2	CRIMPER, INSULATION O	3
-	1	1	2-455888-0	SPACER, CRIMPER	2	
1	1	2	1	5-568176-0	CRIMPER, WIRE	1

ATLANTIC VERSION
Shown on sheets 1 of 4 & 2 of 4
(Pacific version shown on sheets 3 of 4 & 4 of 4)

DIMENSIONS:		TOLERANCES UNLESS OTHERWISE SPECIFIED:		MATERIAL:		FINISH:	
mm	0 PLC ±	1 PLC ±	2 PLC ±	3 PLC ±	4 PLC ±	ANGLES ±	FINISH ±

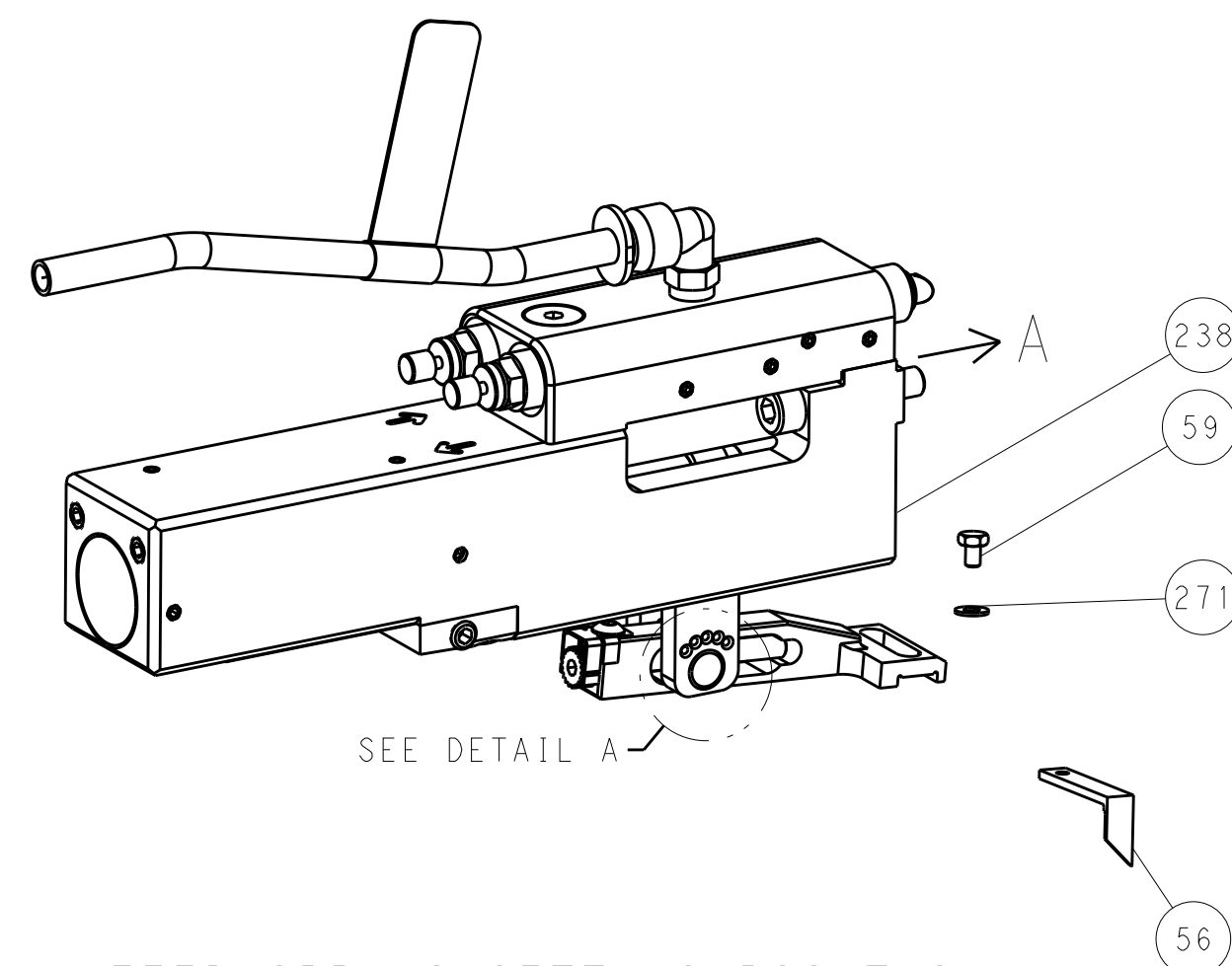
DATE	26NOV2012	CHK	H. HUANG	APPD	S. XI
DATE	26NOV2012	CHK	S. XI	APPD	S. XI
DATE	26NOV2012	CHK	S. XI	APPD	S. XI

NAME	Ocean Side Feed Applicator		
SIZE	CAGE CODE	DRAWING NO	RESTRICTED TO
A1	00779	2151794	
Customer Accessible Production Drawing		SCALE	1:2
SHEET		1	OF 4
REV		J	

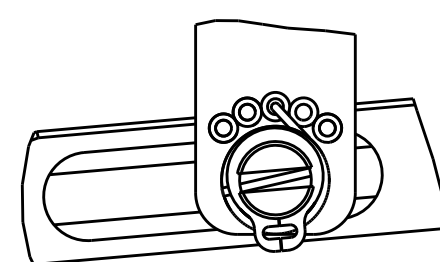
LOC		DIST		REVISIONS			
A	66	P	LTM	DESCRIPTION	DATE	OWN	APVD
		-		SEE SHEET 1			

FEED TYPE

PNEUMATIC

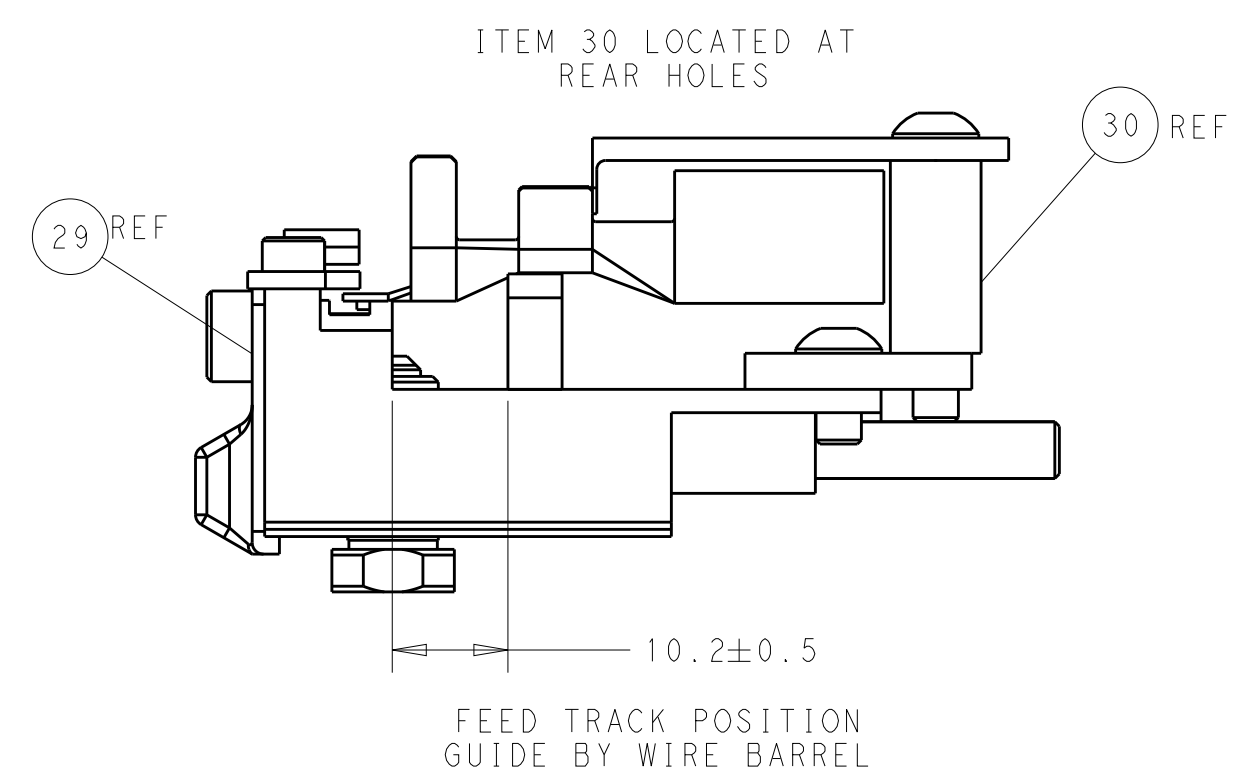
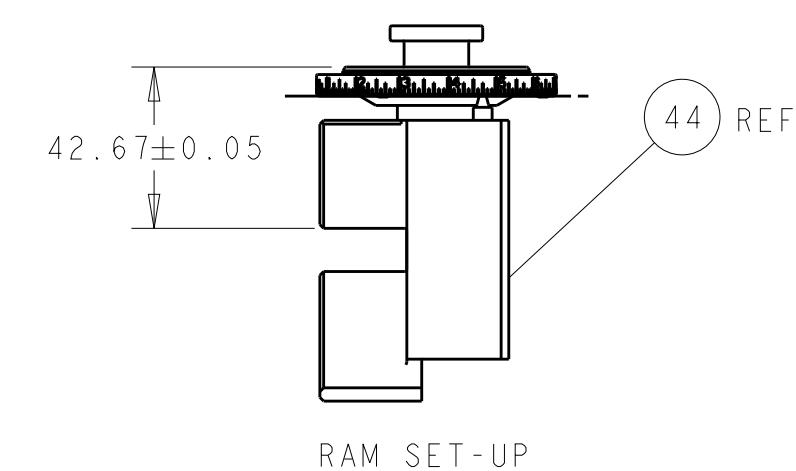
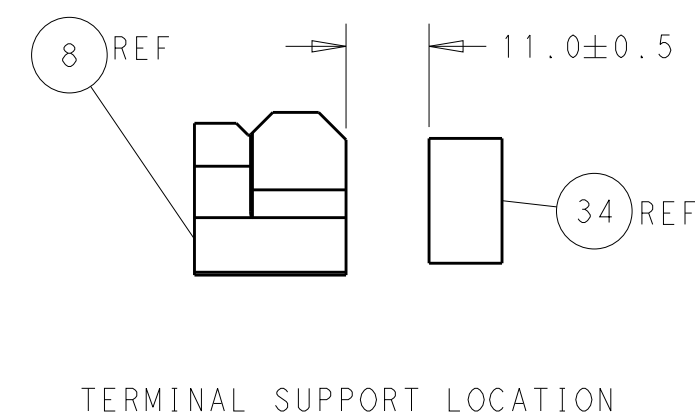
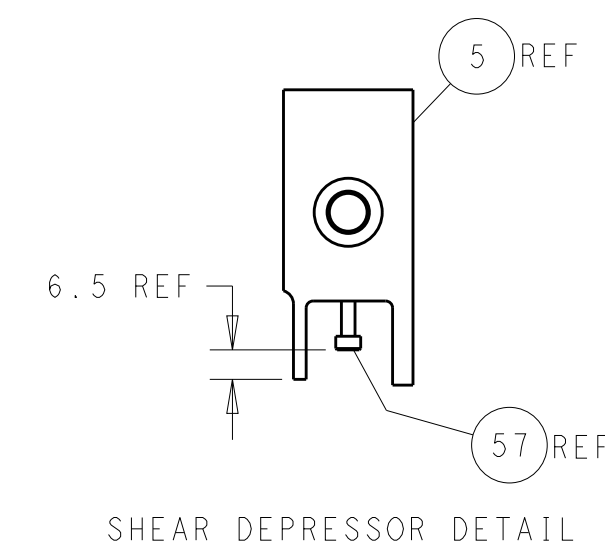
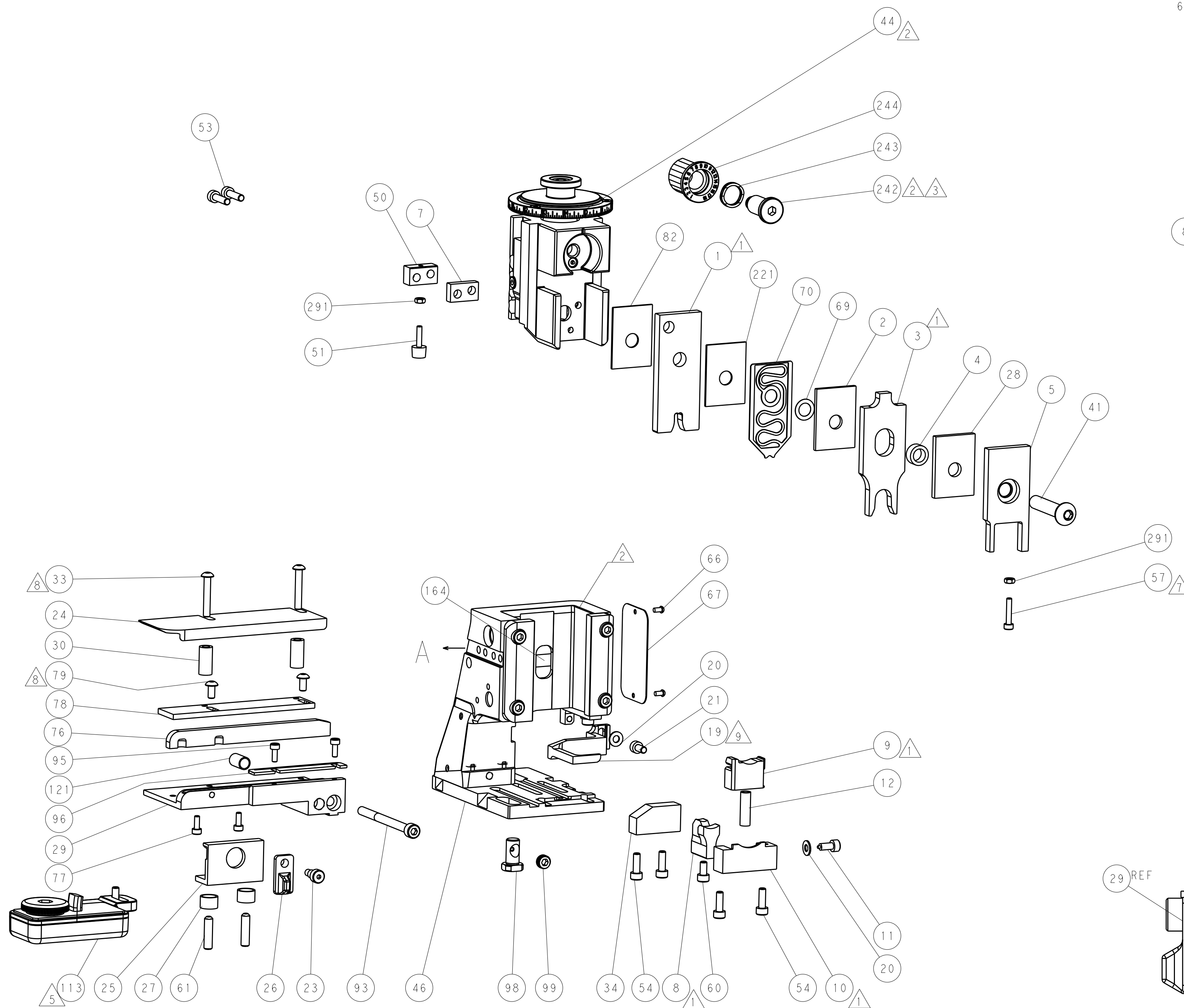
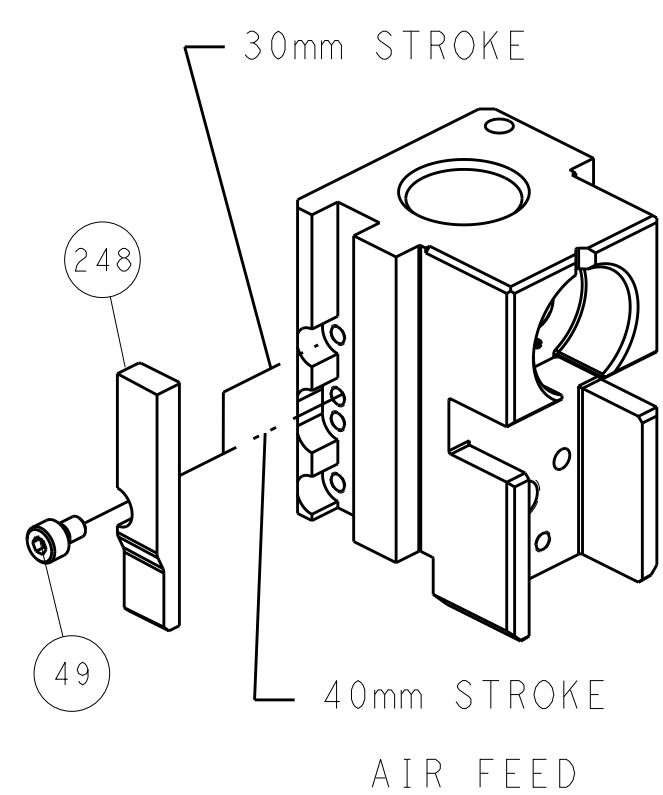


FEED SPRING SETTING POSITION
(SHOWN FROM REAR SIDE)



DETAIL A

CAM POSITION



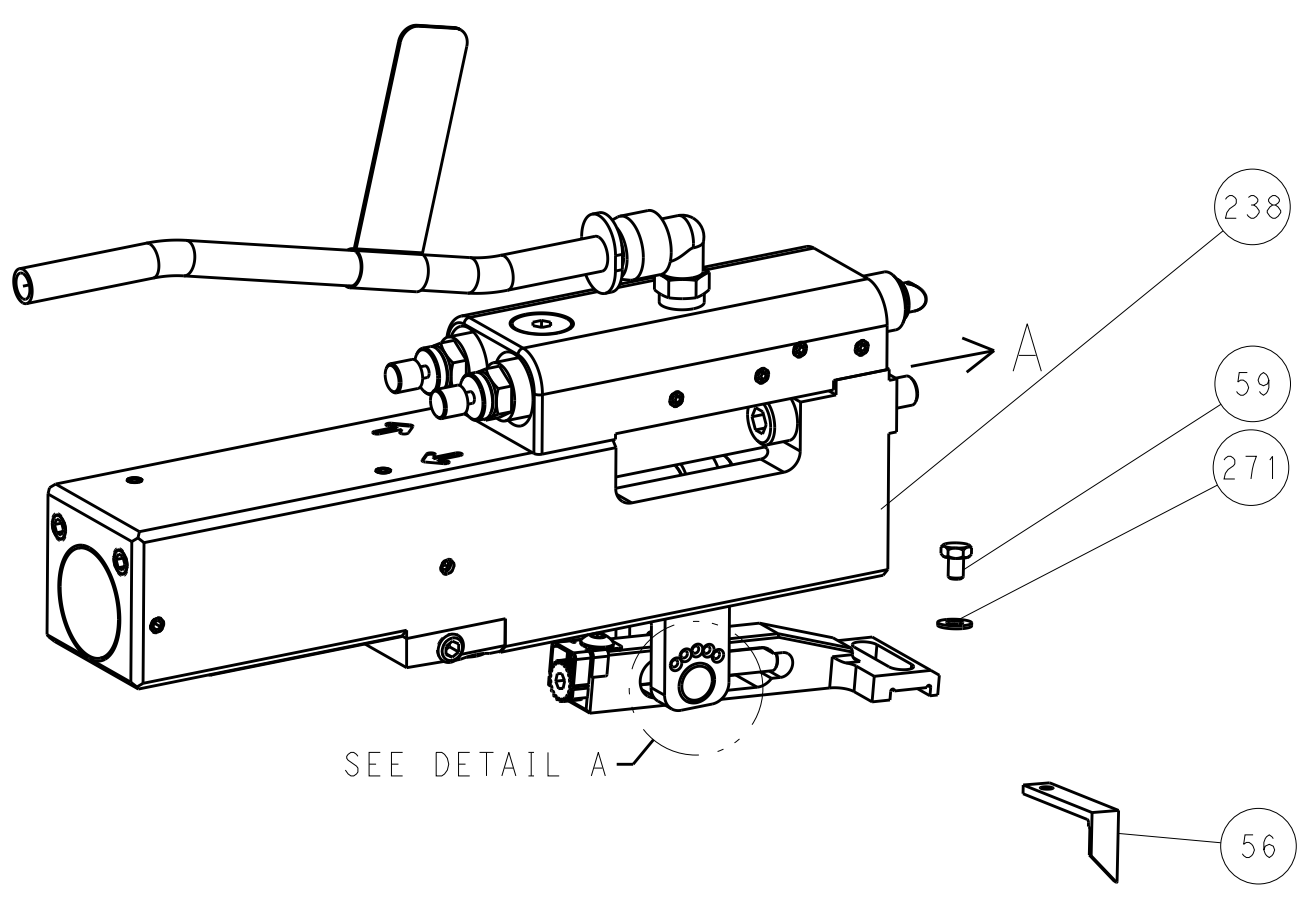
ATLANTIC VERSION
 Shown on sheets 1 of 4 & 2 of 4
 (Pacific version shown on sheets 3 of 4 & 4 of 4)

DIMENSIONS:		TOLERANCES UNLESS OTHERWISE SPECIFIED:		DWG: H. HUANG 26NOV2012		TE Connectivity	
mm	0 PLC ±	1 PLC ±	2 PLC ±	3 PLC ±	4 PLC ±	5 PLC ±	Harrisburg, PA 17105-3608
	ANGLES	FINISH		CHK: S.XI 26NOV2012	NAME: Ocean Side Feed Applicator	RESTRICTED TO	
MATERIAL:		WTGHT:		APVD: S.XI 26NOV2012	SIZE: A1	CAGE CODE: 00779	DRAWING NO: 2151794
Customer Accessible Production Drawing				SCALE: 1:2	SHEET: 2 of 4	REV: J	

LOC		DIST		REVISIONS			
A	66	P	LTM	DESCRIPTION	DATE	OWN	APVD
		-		SEE SHEET 1			

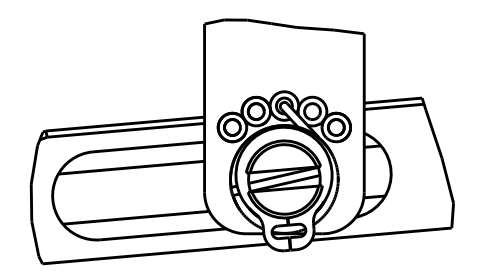
FEED TYPE

PNEUMATIC



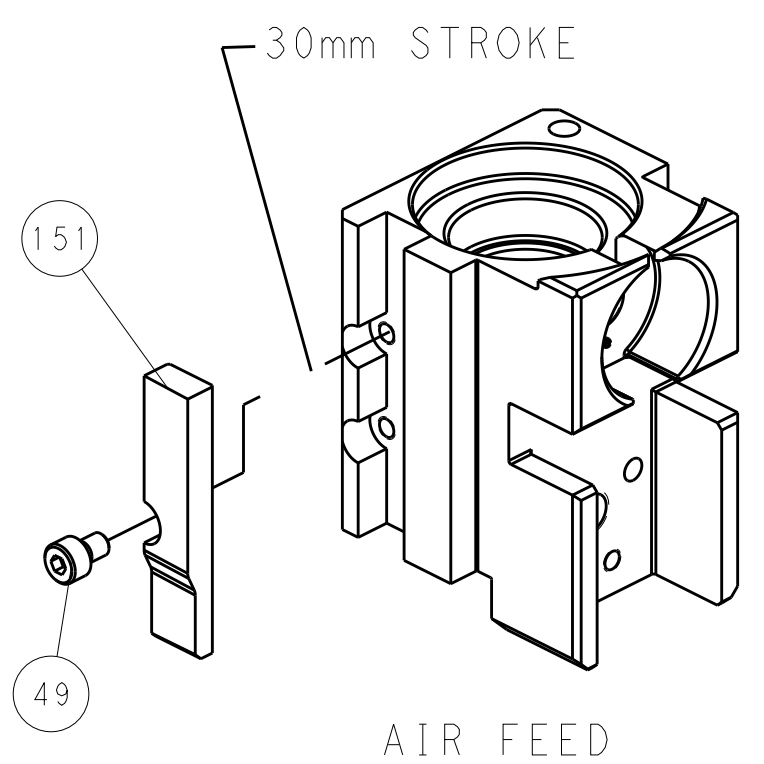
SEE DETAIL A

FEED SPRING SETTING POSITION (SHOWN FROM REAR SIDE)

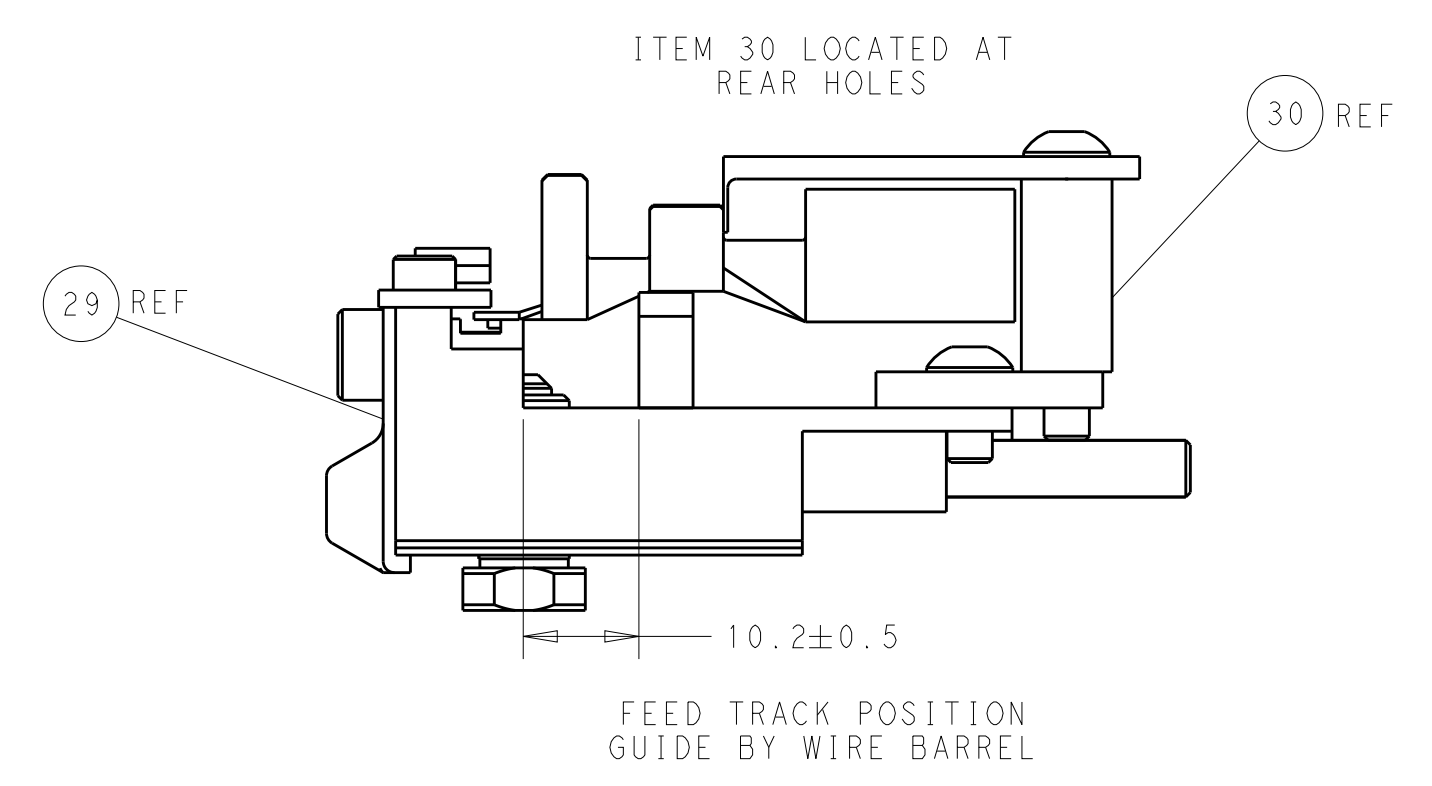
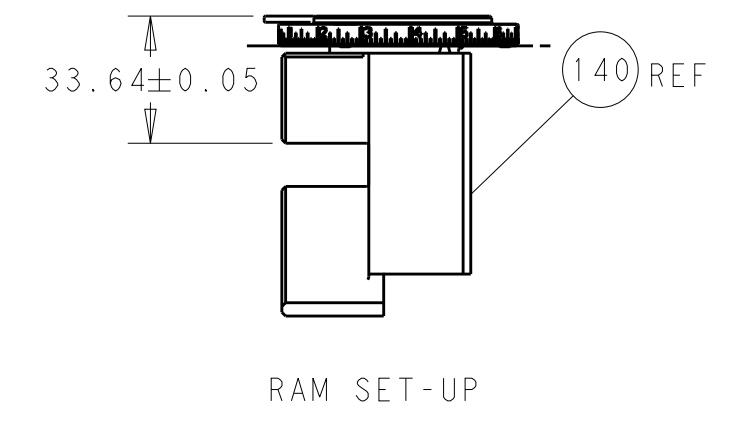
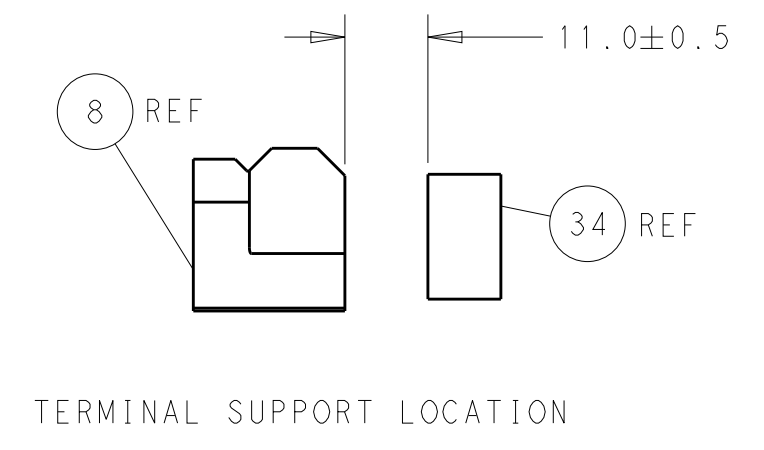
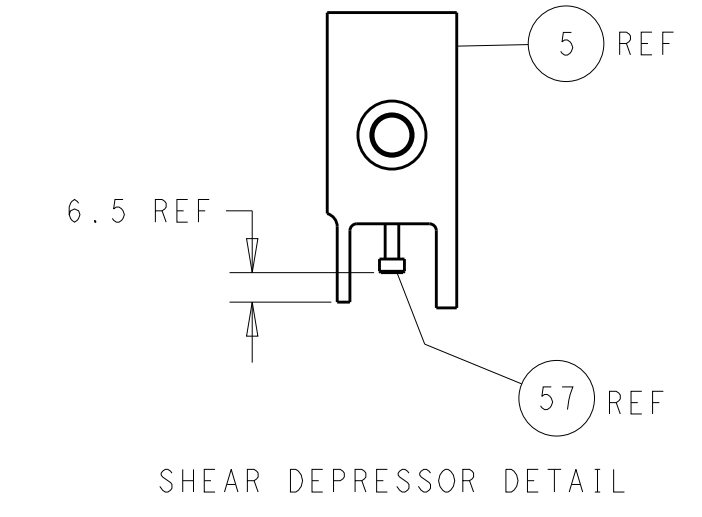
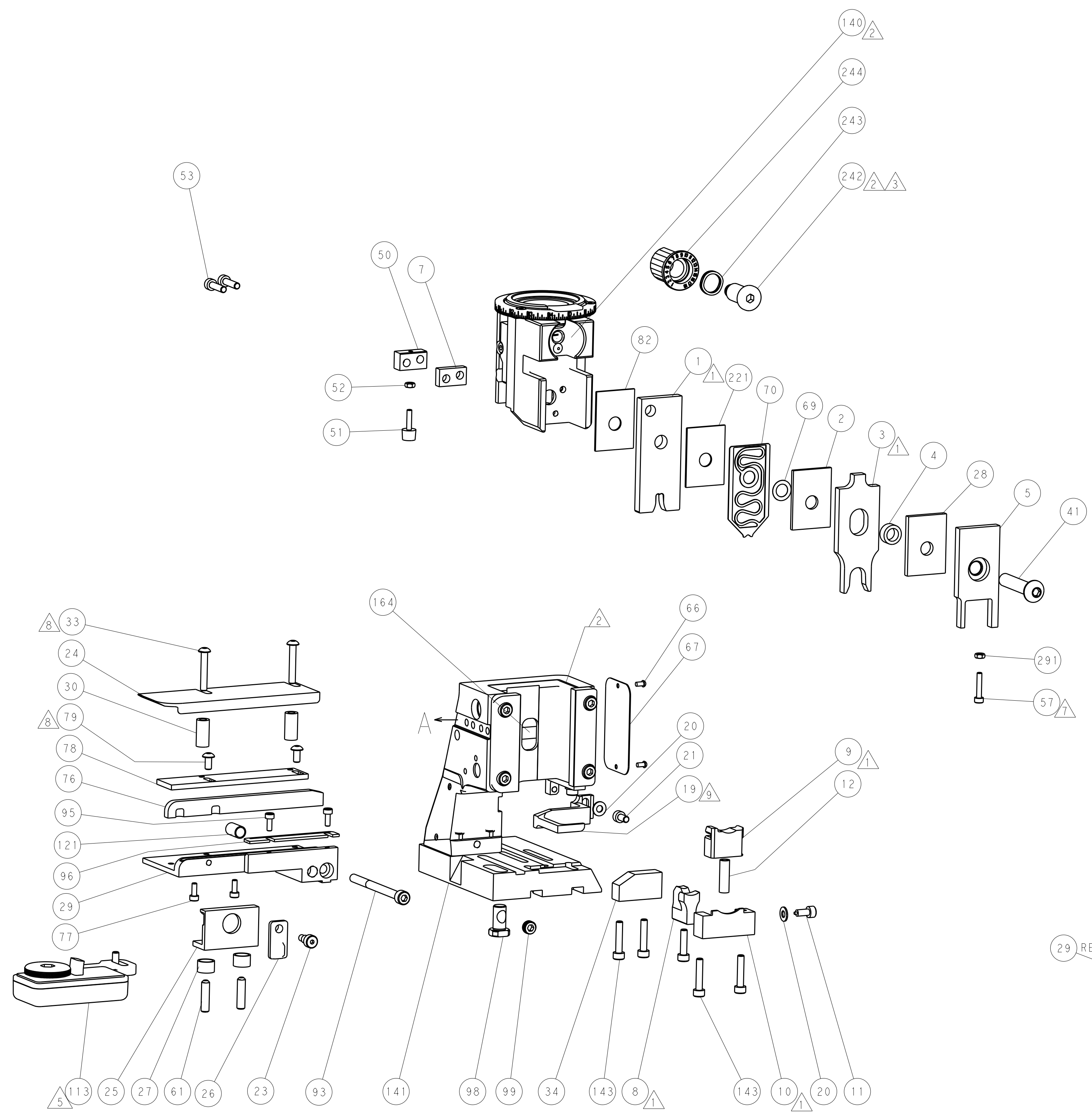


DETAIL A

CAM POSITION



AIR FEED



PACIFIC VERSION
 Shown on sheets 3 of 4 & 4 of 4
 (Atlantic version shown on sheets 1 of 4 & 2 of 4)

DIMENSIONS: mm 		TOLERANCES UNLESS OTHERWISE SPECIFIED: 0 PLC ± 1 PLC ± 2 PLC ± 3 PLC ± 4 PLC ± ANGLES ±		DWN H. HUANG 26NOV2012 CHK S. XI 26NOV2012 APVD S. XI 26NOV2012 NAME Ocean Side Feed Applicator SIZE CAGE CODE DRAWING NO RESTRICTED TO A1 00779 C=2151794 Customer Accessible Production Drawing SCALE 1:2 SHEET 4 OF 4 REV J	
-----------------------	--	---	--	--	--