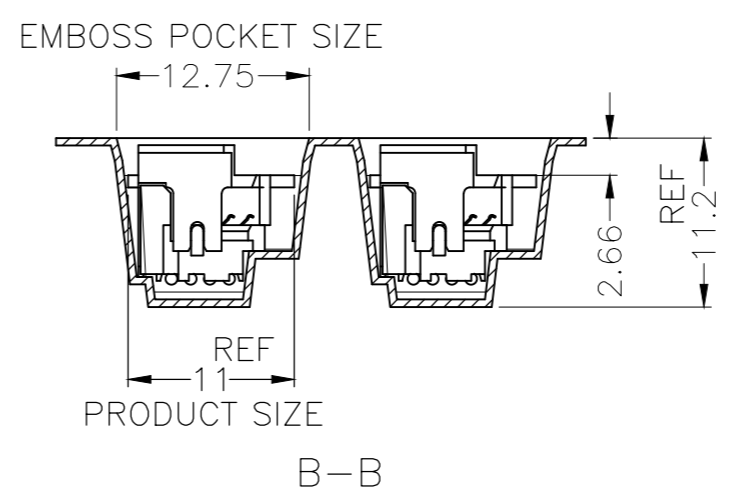
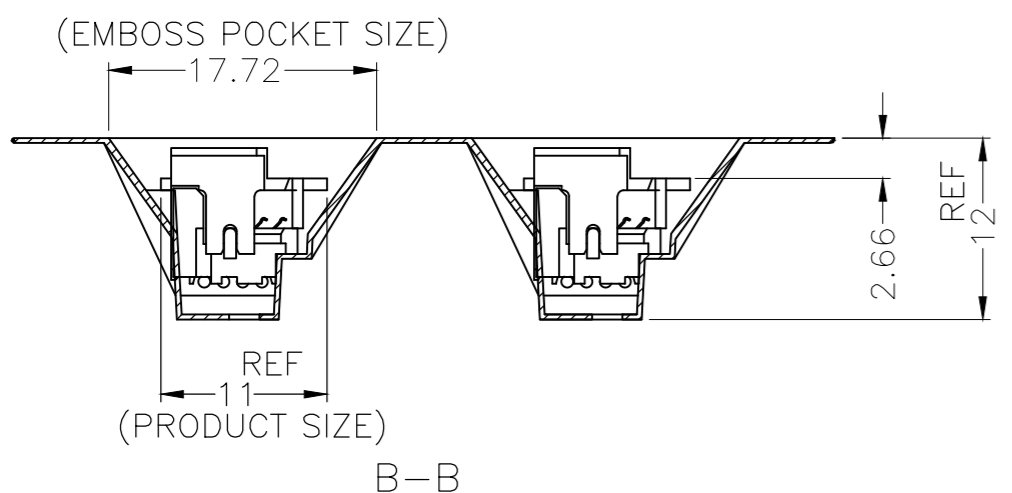
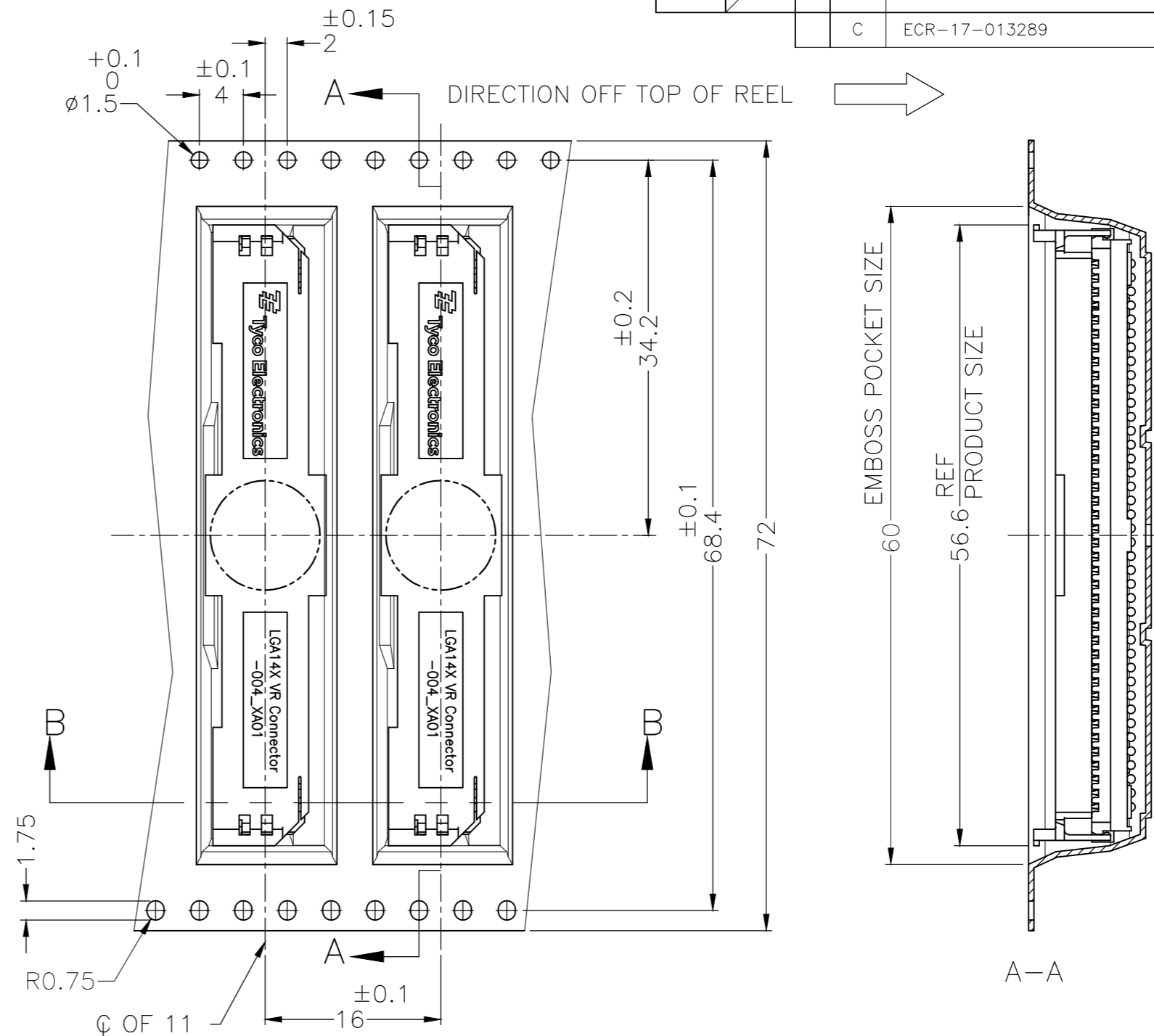
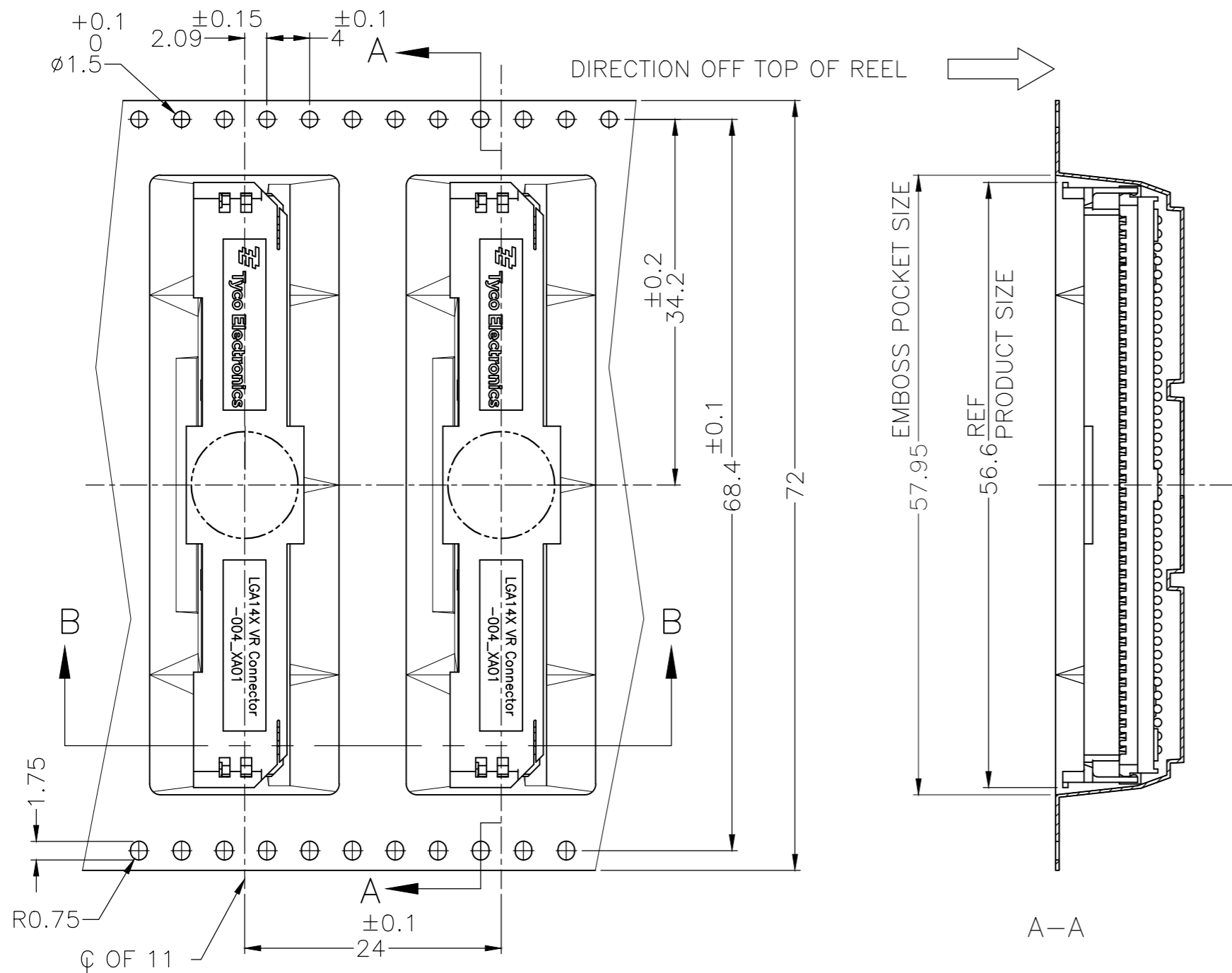
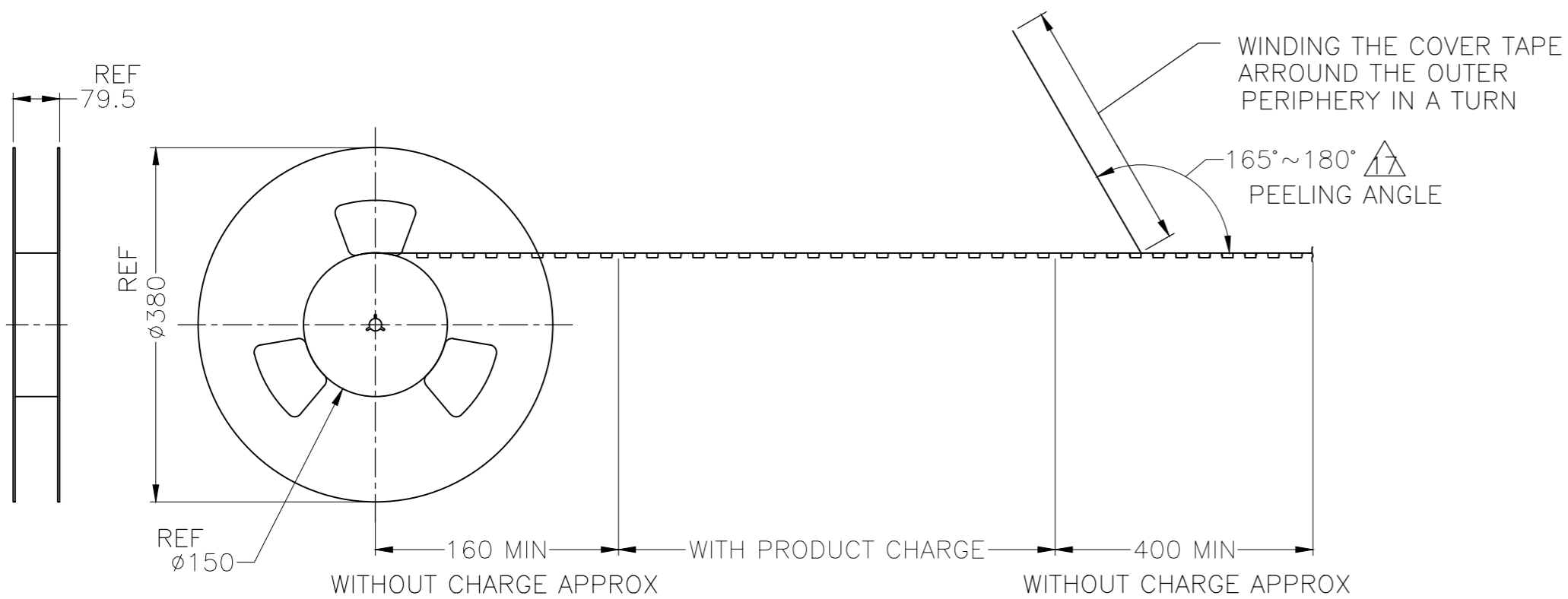


LOC	DIST	REVISIONS			
P	LTR	DESCRIPTION	DATE	DWN	APVD
J					
C		ECR-17-013289	03JUN18	B.L	S.L



1761122-1,-2 AS SHOWN

1761122-3 AS SHOWN

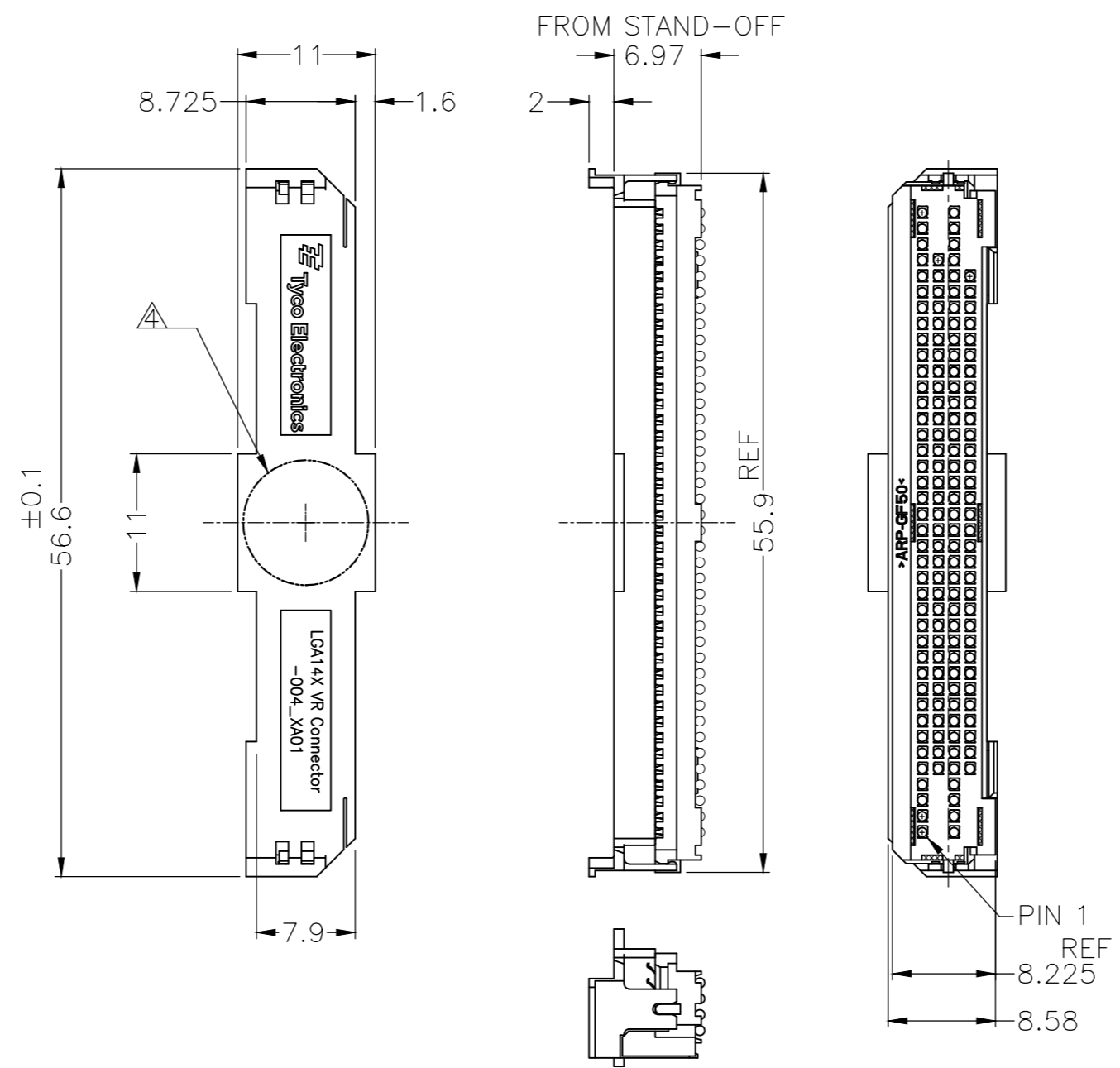


<del>OBSOLETE</del>	LEAD-FREE	1761122-3	450 / REEL
<del>OBSOLETE</del>	EUTECTIC 63Sn/37Pb	1761122-2	300 / REEL
<del>OBSOLETE</del>	LEAD-FREE	1761122-1	300 / REEL
	SOLDER BALL	PART NUMBER	QUANTITY

THIS DRAWING IS A CONTROLLED DOCUMENT.		DWN	T.TOKUNAGA	09MAR2009		SMT LGA SOCKET			
DIMENSIONS: mm		CHK	H.TAGUCHI	09MAR2009		145 POSITION ASSEMBLY			
TOLERANCES UNLESS OTHERWISE SPECIFIED:		APVD	T.NAKASHIMA	09MAR2009		NAME			
6 PLG ± ±0.3		PRODUCT SPEC	108-78431	SIZE		CAGE CODE	DRAWING NO	RESTRICTED TO	
1 PLG ± ±1°		APPLICATION SPEC	114-5440	WEIGHT		A2	00779	C=1761122	
2 PLG ± ±		MATERIAL		CUSTOMER DRAWING		SCALE	NTS	SHEET	1 of 4
3 PLG ± ±		FINISH						REV	C
4 PLG ± ±									
ANGLES ± ±									

THIS DRAWING IS UNPUBLISHED. RELEASED FOR PUBLICATION - 20 .  
 © COPYRIGHT 20 By Tyco Electronics JAPAN G.K. ALL RIGHTS RESERVED.

LOC		DIST		REVISIONS			
P	LTR	DESCRIPTION	DATE	DWN	APVD		
-	-	SEE SHEET 1	-	-	-		

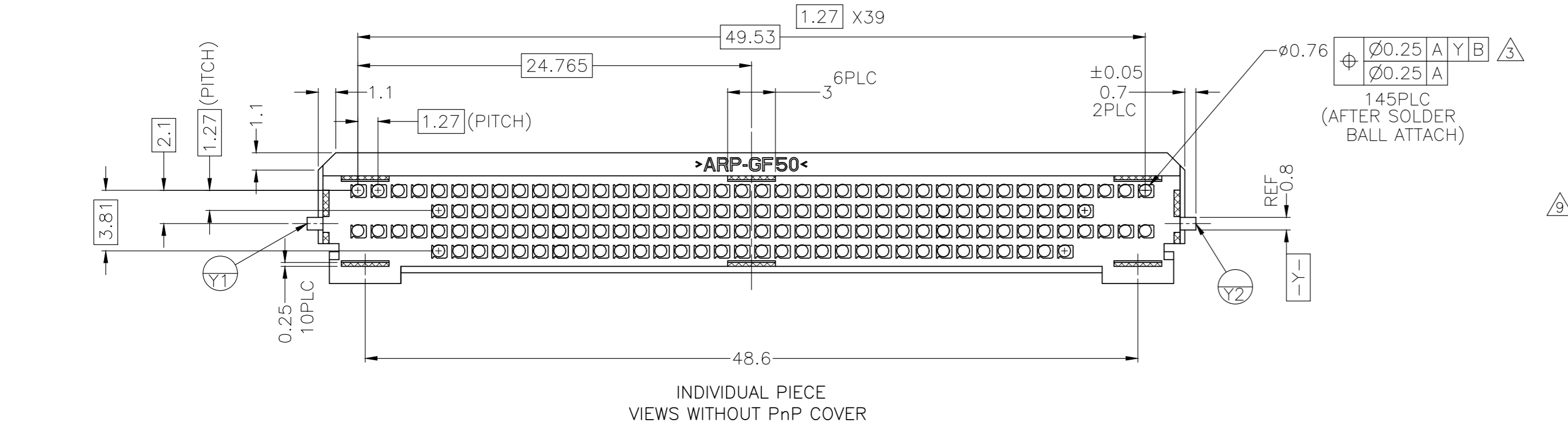
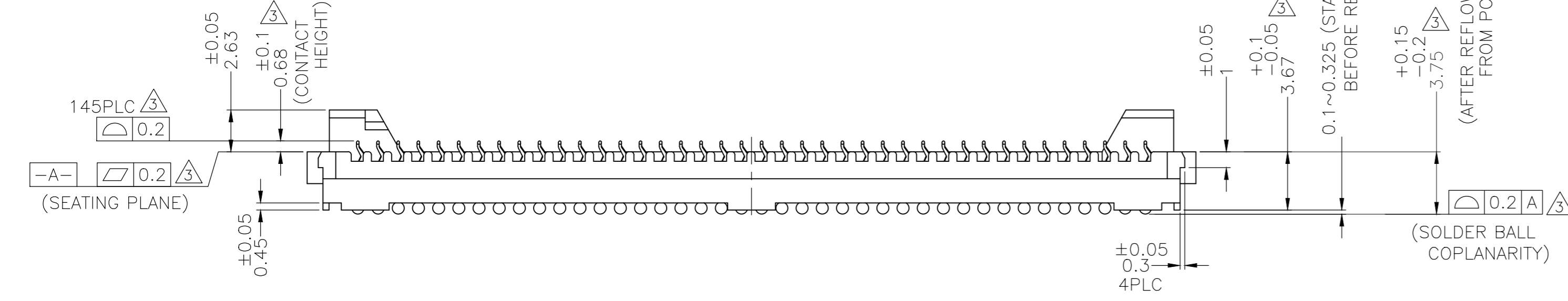
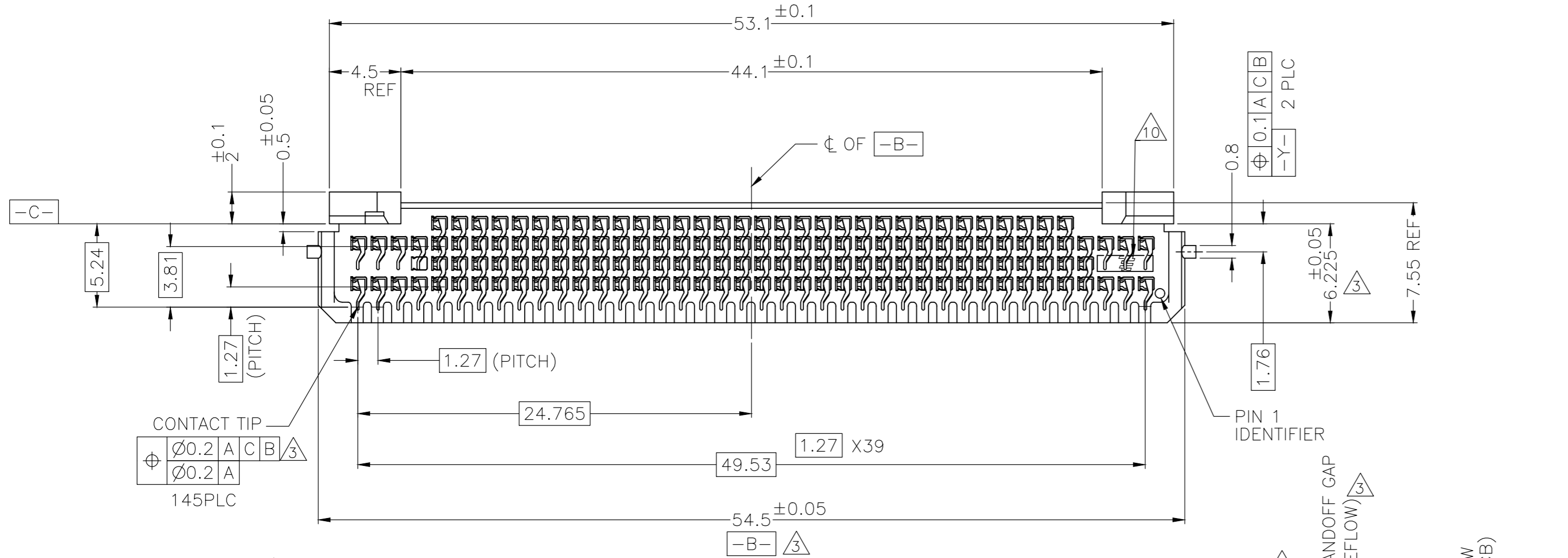


INDIVIDUAL PIECE  
VIEWS WITH PnP COVER

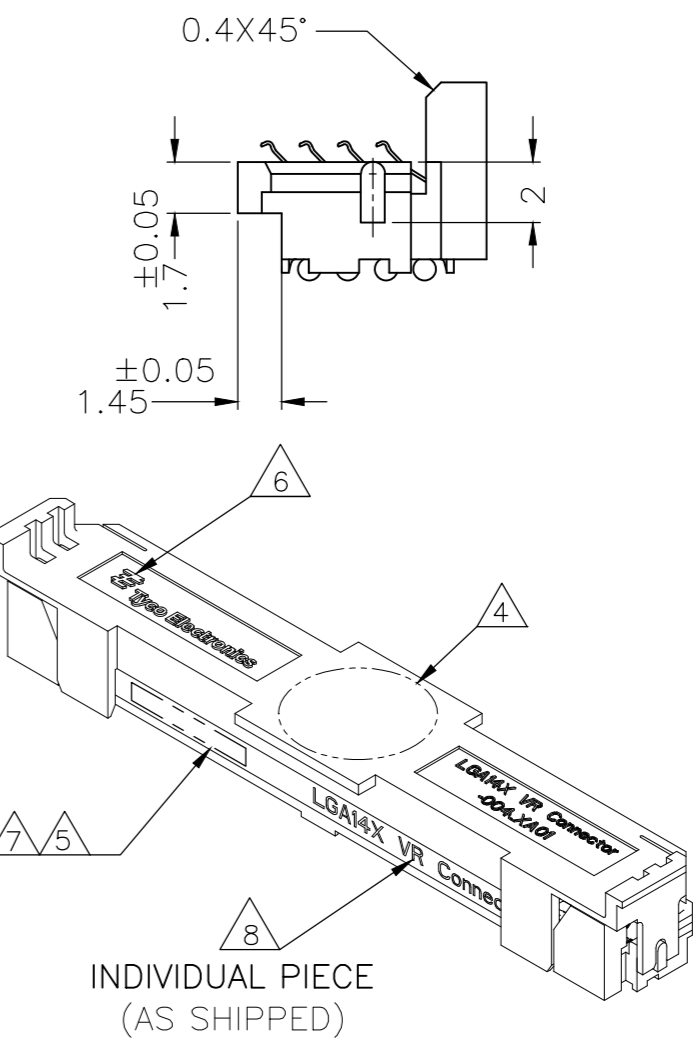
THIS DRAWING IS A CONTROLLED DOCUMENT.		DWN	<b>TE</b> TE Connectivity	
DIMENSIONS: mm		CHK		
TOLERANCES UNLESS OTHERWISE SPECIFIED:		APVD	NAME	
6 PLC ± ±0.3		PRODUCT SPEC	SMT LGA SOCKET	
1 PLC ± ±1°		APPLICATION SPEC	145 POSITION ASSEMBLY	
2 PLC ± ±		WEIGHT	SIZE	CAGE CODE
3 PLC ± ±		CUSTOMER DRAWING	A2	00779
4 PLC ± ±		SCALE	DRAWING NO	RESTRICTED TO
ANGLES ±		NTS	C=1761122	-
FINISH		SHEET	2 of 4	REV
		REV	C	

THIS DRAWING IS UNPUBLISHED. RELEASED FOR PUBLICATION - 20 .  
 © COPYRIGHT 20 By Tyco Electronics JAPAN G.K. ALL RIGHTS RESERVED.

LOC		DIST		REVISIONS				
P	LTR	DESCRIPTION	DATE	DWN	APVD			
-	-	SEE SHEET 1	-	-	-			



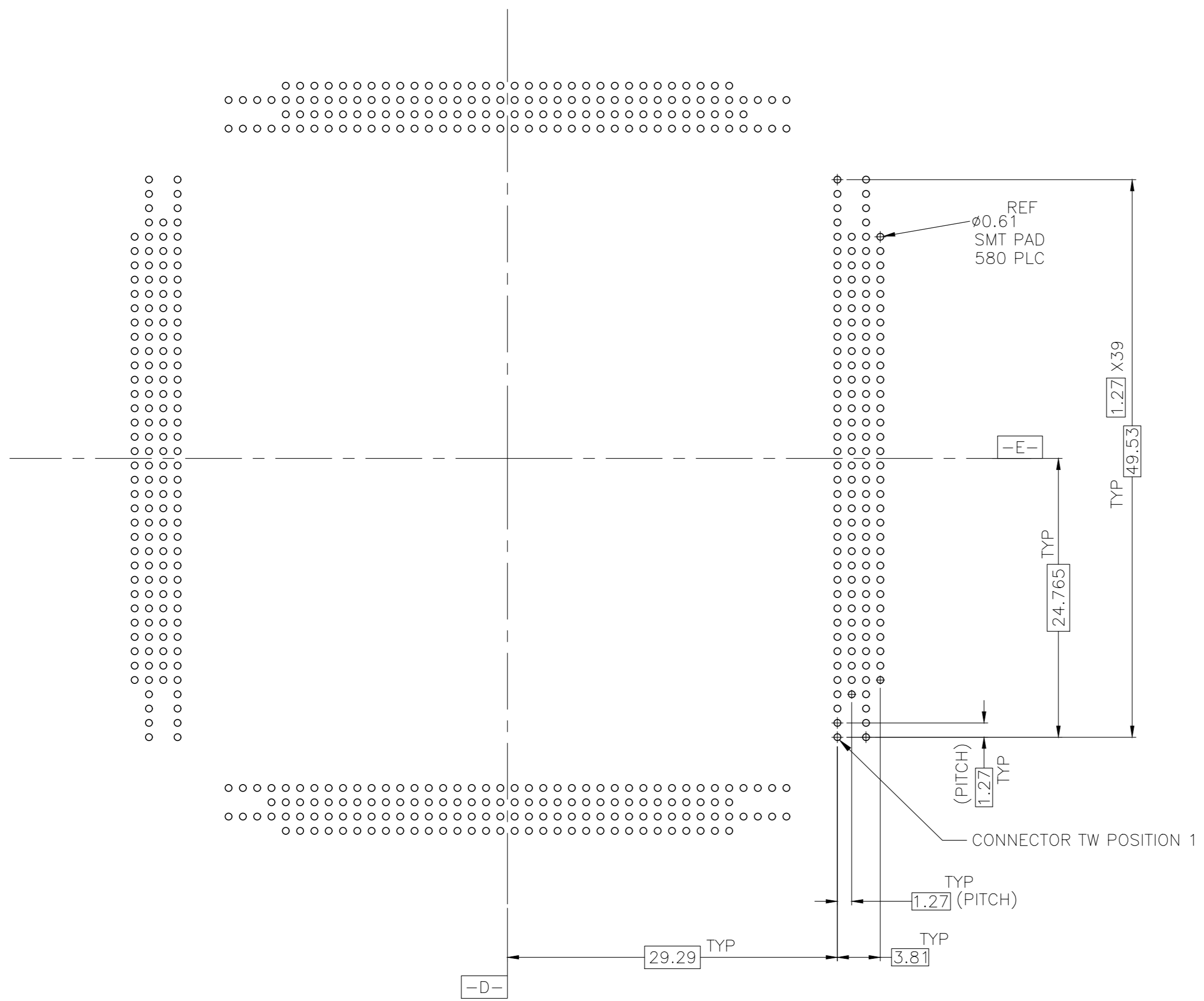
- 1 MATERIAL:  
HOUSING : HIGH TEMPERATURE THERMOPLASTIC, UL 94V-0  
CONTACT : COPPER ALLOY  
SOLDER BALLS : SEE TABLE
- 2 FINISH:  
CONTACT : 0.76 μm MIN GOLD OVER 1.27 μm MIN NICKEL  
IN CONTACT MATING ZONE
- 3 CTF DIMENSIONS
- 4 AREA TO SUPPORT THE VACUUM TYPE PICK AND PLACE  
HIGH VOLUME MANUFACTURING SYSTEM
- 5 LOT NUMBER INDICATED IN THIS AREA.
- 6 TE LOGO INDICATED IN THIS AREA.
- 7 SOLDER BALL TYPE INDICATED IN THIS AREA  
"LF" TEXT FOR LEAD FREE SOLDER  
NO TEXT FOR TIN-LEAD SOLDER.
- 8 PRODUCT ID INDICATED IN THIS AREA
- 9 INTEL CONCEPT BOM NUMBER INDICATED IN THIS AREA



THIS DRAWING IS A CONTROLLED DOCUMENT.		DWN	 TE Connectivity NAME SMT LGA SOCKET 145 POSITION ASSEMBLY					
DIMENSIONS: mm		CHK				SIZE	CAGE CODE	DRAWING NO
TOLERANCES UNLESS OTHERWISE SPECIFIED:		APVD				A2	00779	C=1761122
6 PLC ± ±0.13 1 PLC ± ±1° 2 PLC ± ±1° 3 PLC ± ± 4 PLC ± ± ANGLES ±		PRODUCT SPEC				RESTRICTED TO		
MATERIAL		APPLICATION SPEC	SCALE 4:1		SHEET 3 of 4			
FINISH		WEIGHT	REV C					
CUSTOMER DRAWING								

THIS DRAWING IS UNPUBLISHED. RELEASED FOR PUBLICATION - 20 .  
 © COPYRIGHT 20 By Tyco Electronics JAPAN G.K. ALL RIGHTS RESERVED.

LOC		DIST		REVISIONS			
P	LTR	DESCRIPTION	DATE	DWN	APVD		
-	-	SEE SHEET 1	-	-	-		



VR BOARD LAYOUT (REFERENCE)  
 QUAD ASSEMBLY  
 SHOWN FROM TOP

FOR GENERAL BOARD DESIGN, PLEASE REFER TO THE THERMAL AND MECHANICAL DESIGN GUIDELINES(TMDG) PROVIDED BY INTEL CORPORATION

THIS DRAWING IS A CONTROLLED DOCUMENT.		DWN		
DIMENSIONS: mm		CHK		
TOLERANCES UNLESS OTHERWISE SPECIFIED:		APVD	NAME	
0 PLC ± ±0.13 1 PLC ± ±1° 2 PLC ± ±1° 3 PLC ± ± 4 PLC ± ±		PRODUCT SPEC	SMT LGA SOCKET 145 POSITION ASSEMBLY	
MATERIAL		APPLICATION SPEC	SIZE	CAGE CODE
FINISH		WEIGHT	A2	00779
		CUSTOMER DRAWING	DRAWING NO	RESTRICTED TO
		SCALE	C=1761122	-
		SHEET	4 OF 4	REV
		NTS		C